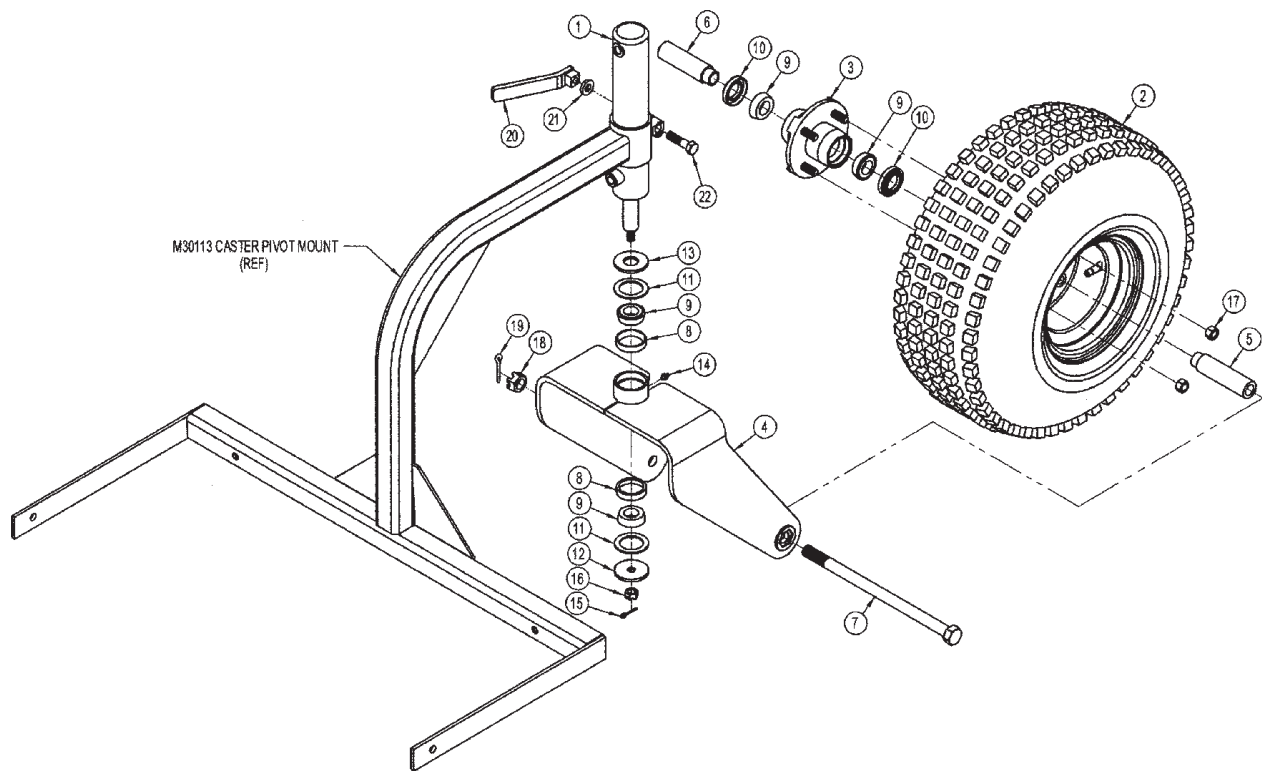
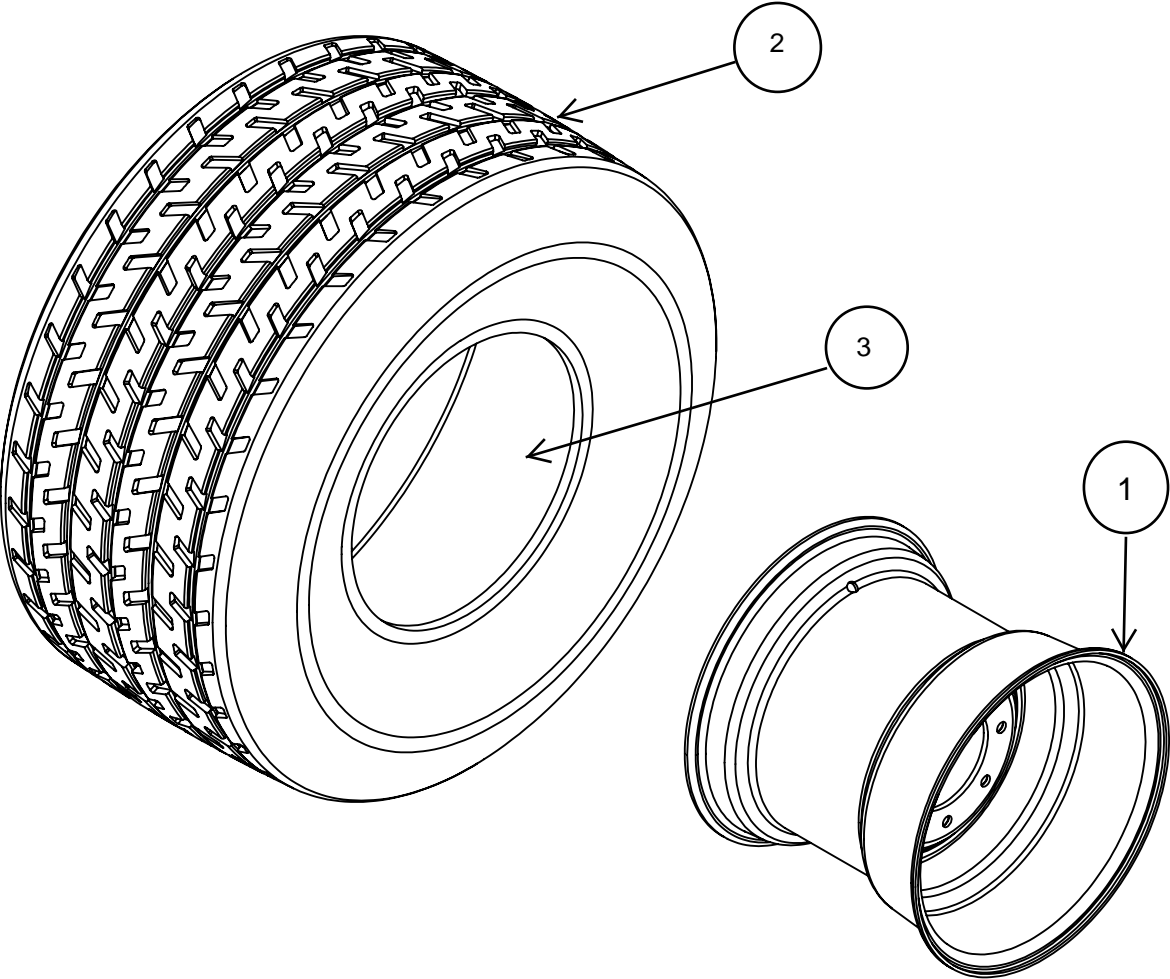


# FRONT CASTER WHEEL ASSEMBLY




## ITEM QTY PART NO. DESCRIPTION

1	1	P257610	HYDRAULIC CYLINDER
2	1	005360	WHEEL ASSY: KNOBBY 22 X 11-8
3	1	P756161	WHEEL HUB WITH STUDS
4	1	M30121	950 CASTER WELDMENT
5	1	M30114	AXLE SPACER LONG
6	1	M30119	AXLE SPACER SHORT
7	1	M30120	AXLE BOLT 13-1/2"
8	2	P762100	1" BEARING CUP
9	4	P762200	1" BEARING CONE
10	2	P756163	GREASE SEAL
11	2	P852300	FELT WASHER
12	1	M5462	2-1/4" OD X 17/32" ID WASHER
13	1	M5464	2-1/4" OD X 1" ID WASHER
14	1	P620200	1/4-28 STR GREASE FITTING
15	1	P116204	1/8" X 1" COTTER PIN
16	1	P158006	1/2" SLOTTED HEX NUT
17	4	P756165	1/2-20 WHEEL NUT
18	1	P158000	3/4 SLOTTED HEX NUT
19	1	P116256	5/32" X 1-1/2" COTTER PIN
20	1	M6415	CASTER WHEEL
21	1	P852608	1/2" HARD WASHER
22	1	P102808	1/2" X 2" FINE THREAD HEX BOLT

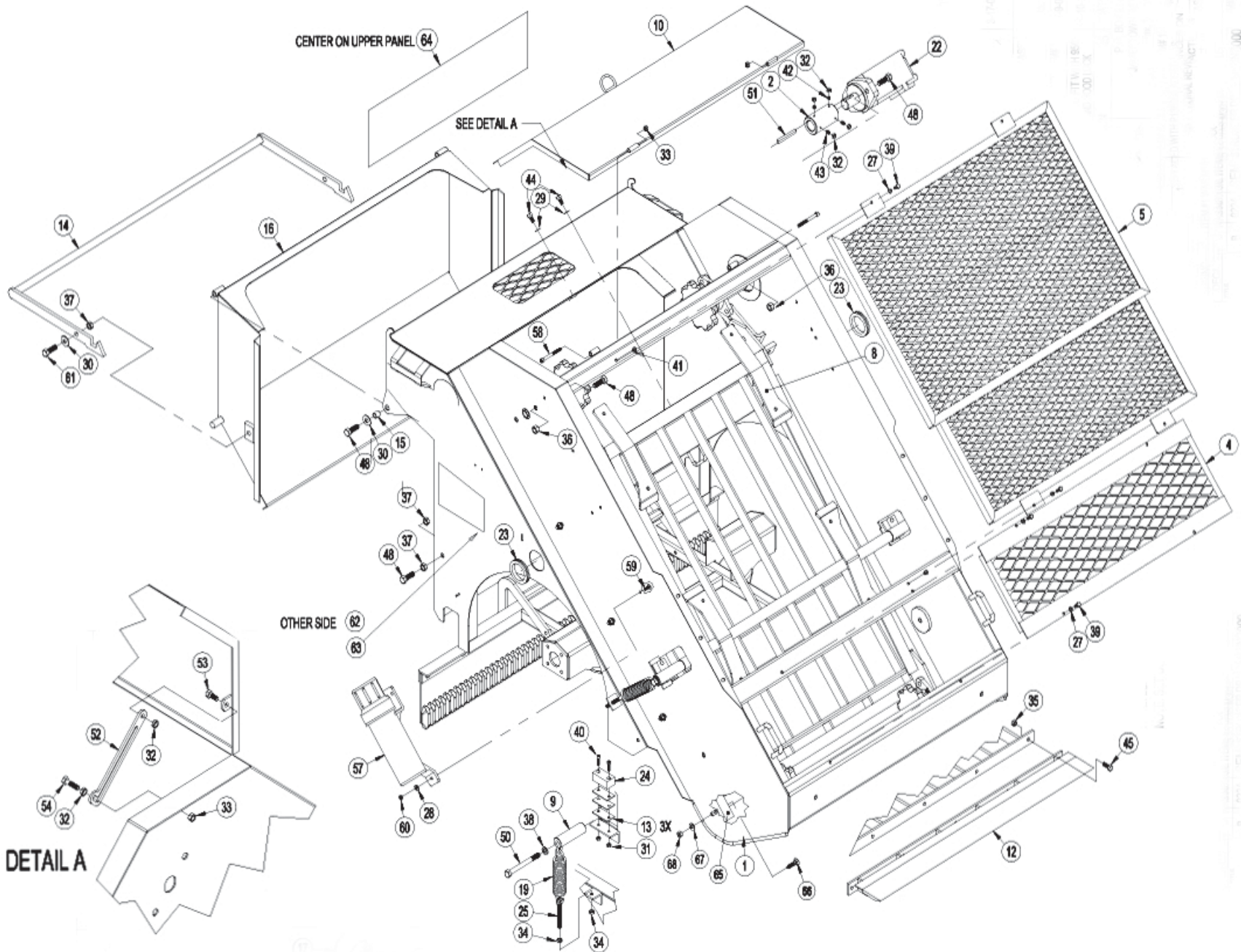


COMPLETE FRONT TIRE / WHEEL ASSEMBLY MDL 950 P/N: 005360  
(KNOBBY 22 X 11 -8)

3	1	P763650	TUBE: 22 X 11 - 8
2	1	P770510	TIRE: 22 X 11 - 8
1	1	P750050	RIM: 8 X 8.50 4/4 SOLID F266
ITEM	QTY.	PART NUMBER	DESCRIPTION



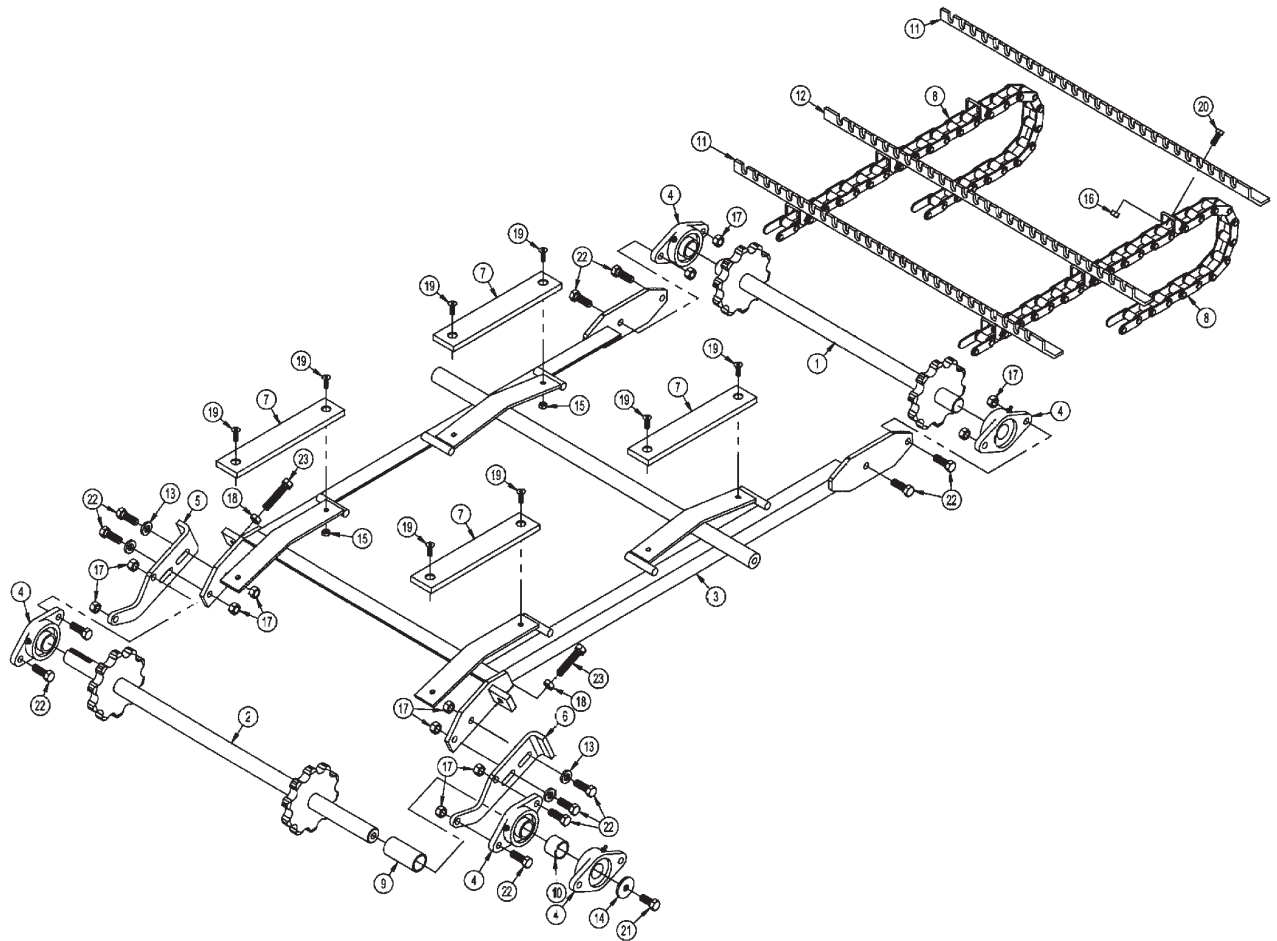
DRAWN BY		TOLERANCES ON		
DATE		DECIMALS	FRACTIONS	ANGLES
		.XX±.060	±1/32	± 1°
		.XXX±.030		
TITLE FRONT TIRE / WHEEL ASSY 950		PART NO.	005360	



# GENERAL ASSEMBLY

<u>Item</u>	<u>Qty</u>	<u>Part ID</u>	<u>Part Description</u>	<u>Item</u>	<u>Qty</u>	<u>Part ID</u>	<u>Part Description</u>
1	1	M30173	Weldment: Main Frame	48	8	P100806	Bolt: Hex, 1/2" X 1 1/2"
2	1	M30022	Coupler: Conveyor Shaft	49		not pictured	See page 33
3		not pictured	See page 33	50		not pictured	See page 33
4	1	M30047	Shield: Front, Lower	51	1	M5000-9	Key: Square, 5/16" X 3"
5	1	950002	Shield: Front, Upper	52	1	M30139	Lock: Hood
6		not pictured	See page 33	53	1	P100503	Bolt: Hex, 5/16" X 3/4"
7		not pictured	See page 33	54	1	P100506	Bolt: Hex, 5/16" X 1 1/2"
8	1	M30074	Assembly: Conveyor	55	1	M30184	Screen: Woven, 1/2"
9	2	M30075	Conveyor: Hold Down	56	1	M30185	Screen: Woven, 3/4"
10	1	M30070	Shield: Rear	57	1	P136000	Tube: Manual
11		not pictured	See page 33	58	2	P110512	5/16 x 3 Socket hd Cap Screw
12	1	M30172	Point: Digger	59	3	P104403	Bolt: Carriage, 1/4" X 3/4"
13	6	M30079	Spacer: Bumper	60	3	P150400	Nut: Hex, 1/4"
14	1	M30080	Handle: Hopper Door	61	2	P100807	Bolt: Hex, 1/2" X 1 3/4"
15	2	M30081	Bushing: Latch Pivot	62	1	P970001	Decal: Cherrington Right
16	1	M30082	Weldment: Hopper	63	1	P970002	Decal: Cherrington Left
17		not pictured	See page 35	64	1	P970003	Decal: Cherrington Rear
18		not pictured	See page 33	65	2	M30178	Screen Guide
19		not pictured	See page 33	66	8	P104605	Bolt: Carriage, 3/8" X 1 1/4"
20		not pictured	See page 33	67	8	P850106	Washer: Flat, 3/8"
21		not pictured	See page 33	68	8	P150601	Nut: Hex, 3/8"
22	1	P350700	Motor: Hydraulic, Char-Lynn 2000, 104-1026				
23	2	P133060	Grommet: Rubber				
24	2	P605000	Pad: Bumper				
25	2	P135101	Bolt: Eye, 3/8"				
26		not pictured	See page 33				
27	8	P851104	Washer: Lock, 1/4"				
28	3	P850104	Washer: Flat, 1/4"				
29	2	P850105	Washer: Flat, 5/16"				
30	4	P850107	Washer: Flat, 7/16"				
31	4	P158003	Nut: Nylock, 1/4"				
32	6	P155300	Nut: Jam, 5/16"				
33	3	P155350	Nut: Top Lock, 5/16"				
34	8	P155400	Nut: Jam, 3/8"				
35	17	P155450	Nut: Top Lock, 3/8"				
36	6	P155850	Nut: Top Lock, 1/2"				
37	6	P157200	Nut: Jam, 1/2"				
38	2	P851108	Washer: Lock, 1/2"				
39	8	P100403	Bolt: Hex, 1/4" X 3/4"				
40	4	P110912	Screw: Cap, Socket Head, 1/4" X 1 1/4"				
41	4	P160251	Nut: Klik, 1/4-20				
42	2	P108508	Screw: Set, 5/16" X 1/2"				
43	2	P108512	Screw: Set, 5/16" X 3/4"				
44	2	P100603	Bolt: Hex, 3/8" X 3/4"				
45	5	P100604	Bolt: Hex, 3/8" X 1"				
46		not pictured	See page 33				
47	2	P100609	Bolt: Hex, 3/8" X 2 1/4"				

# CONVEYOR ASSEMBLY

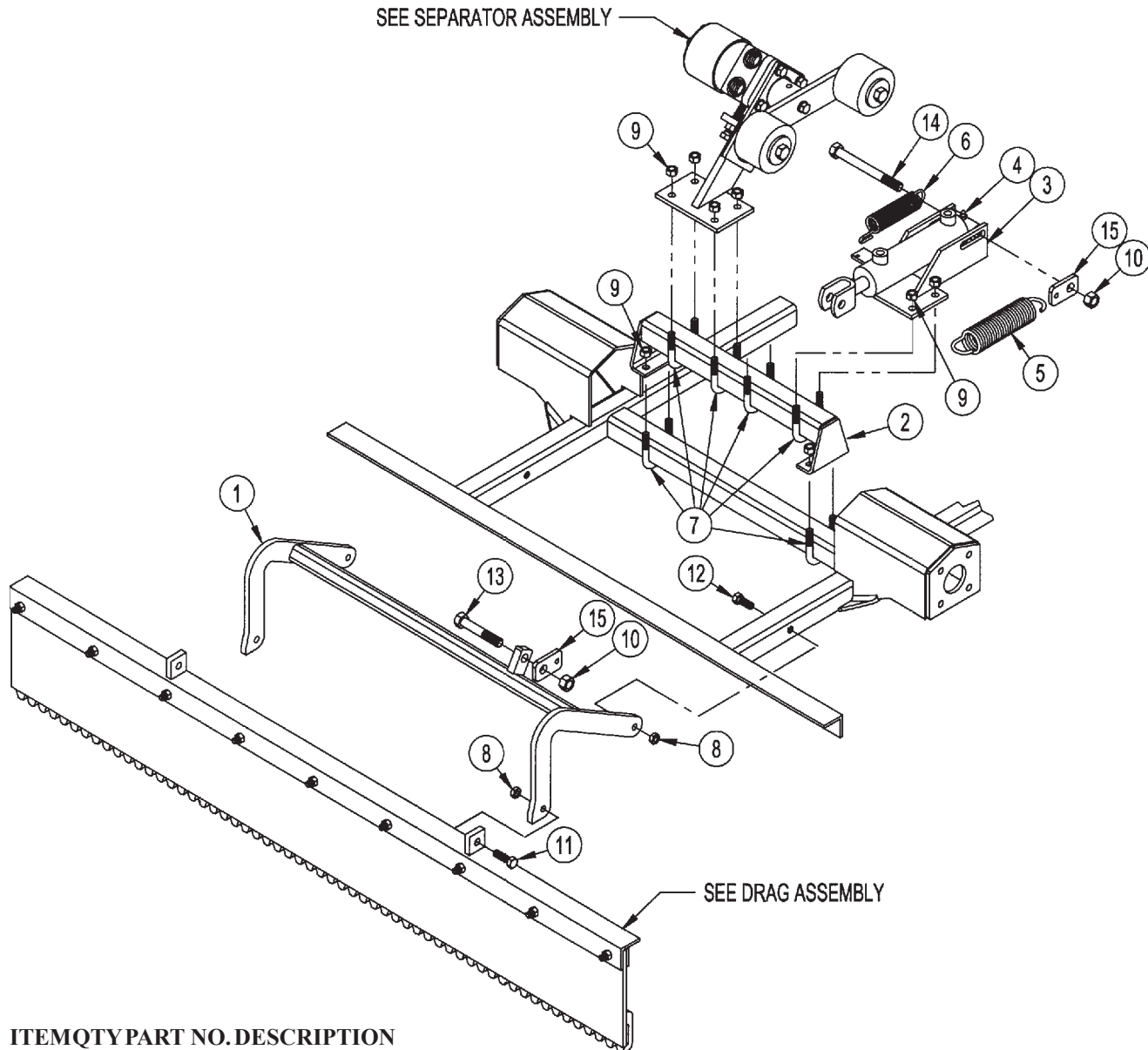


## ITEM QTY PART NO. DESCRIPTION

1	1	M30015	FRONT CONVEYOR SHAFT
2	1	M30016	REAR CONVEYOR SHAFT
3	1	M30006	CONVEYOR SUPPORT WELDMENT
4	5	M30073	1-1/4" MODIFIED FLANGE BEARING
5	1	M30007	CONVEYOR ADJUSTMENT BRACKET L
6	1	M30008	CONVEYOR ADJUSTMENT BRACKET R
7	4	M30086	WEAR STRIP <b>*REPLACED WITH 71.000271M</b>
8	2	M30189	CONVEYOR CHAIN WELDMENT
9	1	M30088	3.219 LG CONVEYOR SHAFT SPACER
10	1	M30089	1.125 SHT CONVEYOR SHAFT SPACER
11	9	M30092	FLIGHT BLADE RIGHT HAND
12	9	M30093	FLIGHT BLADE LEFT HAND
13	4	P852608	1/2" HARD WASHER
14	1	M5009-5	3/16" X 1/2" X 1-3/4" WASHER
15	8	P155350	5/16" TOP LOCK NUT
16	36	P155450	3/8" TOP LOCK NUT
17	12	P155850	1/2" TOP LOCK NUT
18	2	P157200	1/2" JAM NUT
19	8	P103504	5/16-18 X 1.00 FLAT HD CAP SCREW
20	36	P100604	3/8" X 1" HEX BOLT
21	1	P102805	1/2" X 1-1/4" FINE THD HEX BOLT
22	12	P100806	1/2" X 1-1/2" HEX BOLT
23	2	P098810	1/2" X 2-1/2" FULL THD HEX BOLT



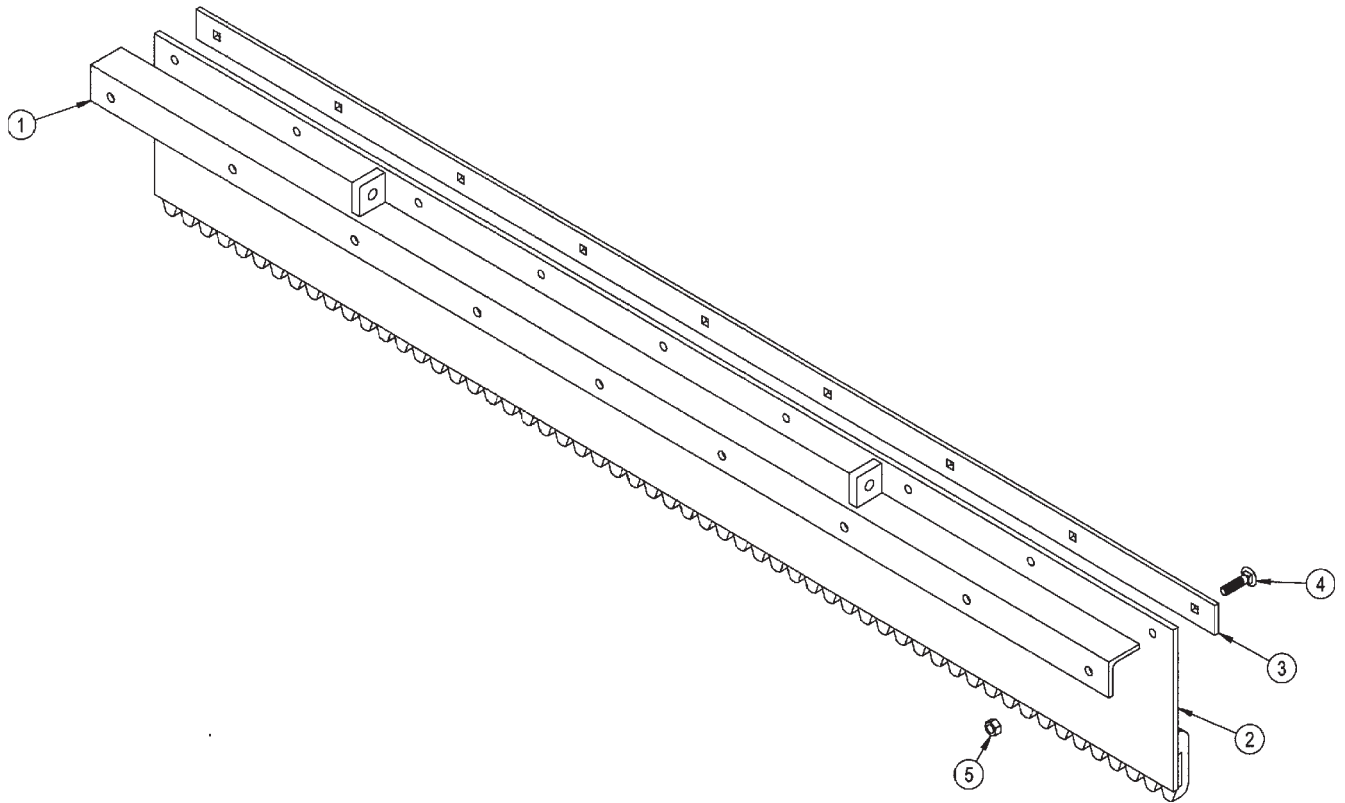
# GROOMER & SEPARATOR ASSEMBLY



## ITEM QTY PART NO. DESCRIPTION

1	1	M30067	LIFT FRAME
2	1	M30110	CONVEYOR RISER BRACKET
3	1	M30023	REAR CYLINDER MOUNT
4	1	P259150	HYDRAULIC CYLINDER 1-1/2" X 4"
		P259151	SEAL KIT
5	1	P601500	EXTENSION SPRING
6	1	P604700	EXTENSION SPRING
7	6	P127204	U-BOLT 3/8" X 1-1/2" X 2-1/4"
8	4	P155400	3/8" JAM NUT
9	12	P155450	3/8" TOP LOCK NUT
10	2	P155850	1/2" TOP LOCK NUT
11	2	P100605	3/8" X 1-1/4" HEX BOLT
12	2	P100609	3/8" X 2-1/4" HEX BOLT
13	1	P100812	1/2" X 3" HEX BOLT
14	1	P100820	1/2" X 5" HEX BOLT
15	2	M30147	SPRING HOLDER

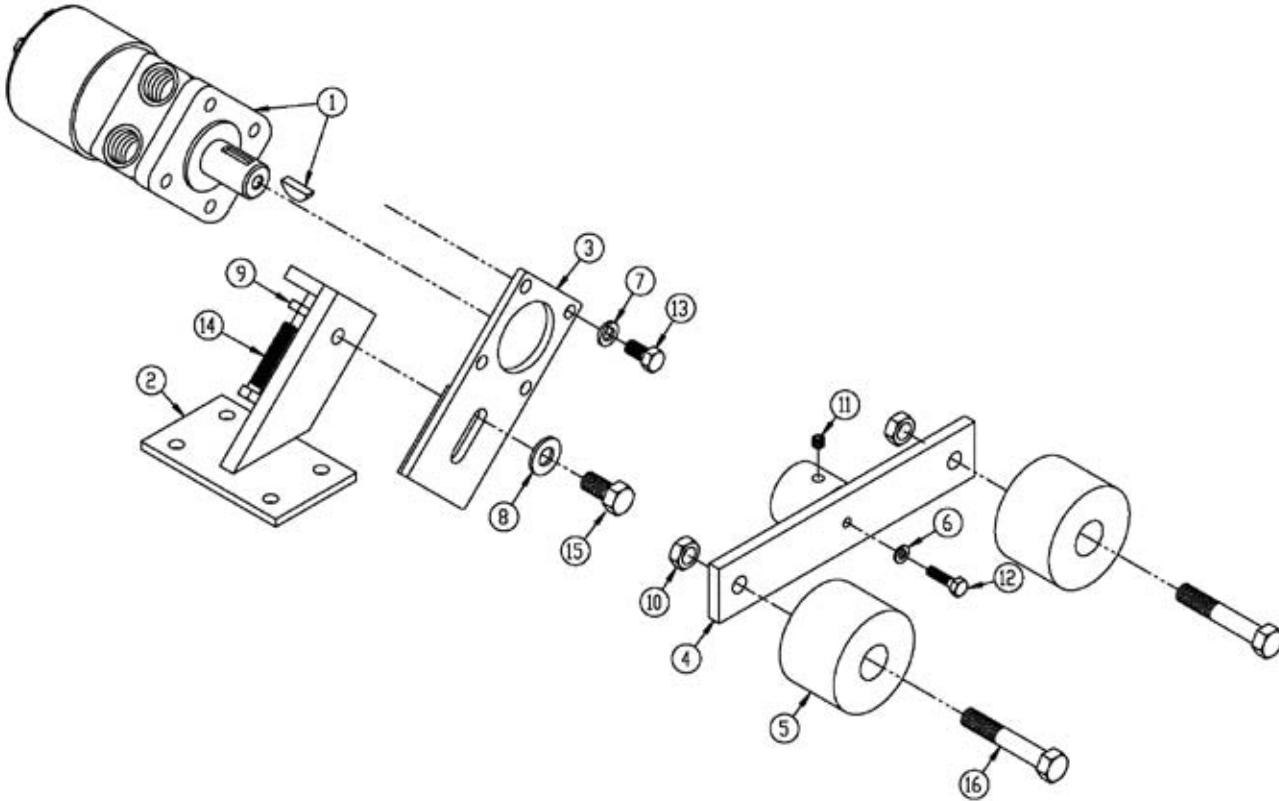
# GROOMER BAR ASSEMBLY



## ITEM QTY PART NO. DESCRIPTION

		M30182	GROOMER BAR ASSEMBLY (Includes Items 1-5)
1	1	M30181	DRAG COMB MOUNT
2	1	M30183	SNOW COMB
3	1	M30180	DRAG COMB STRAP
4	9	P104505	5/16" X 1-1/4" CARRIAGE BOLT
5	9	P155350	5/16" TOP LOCK NUT

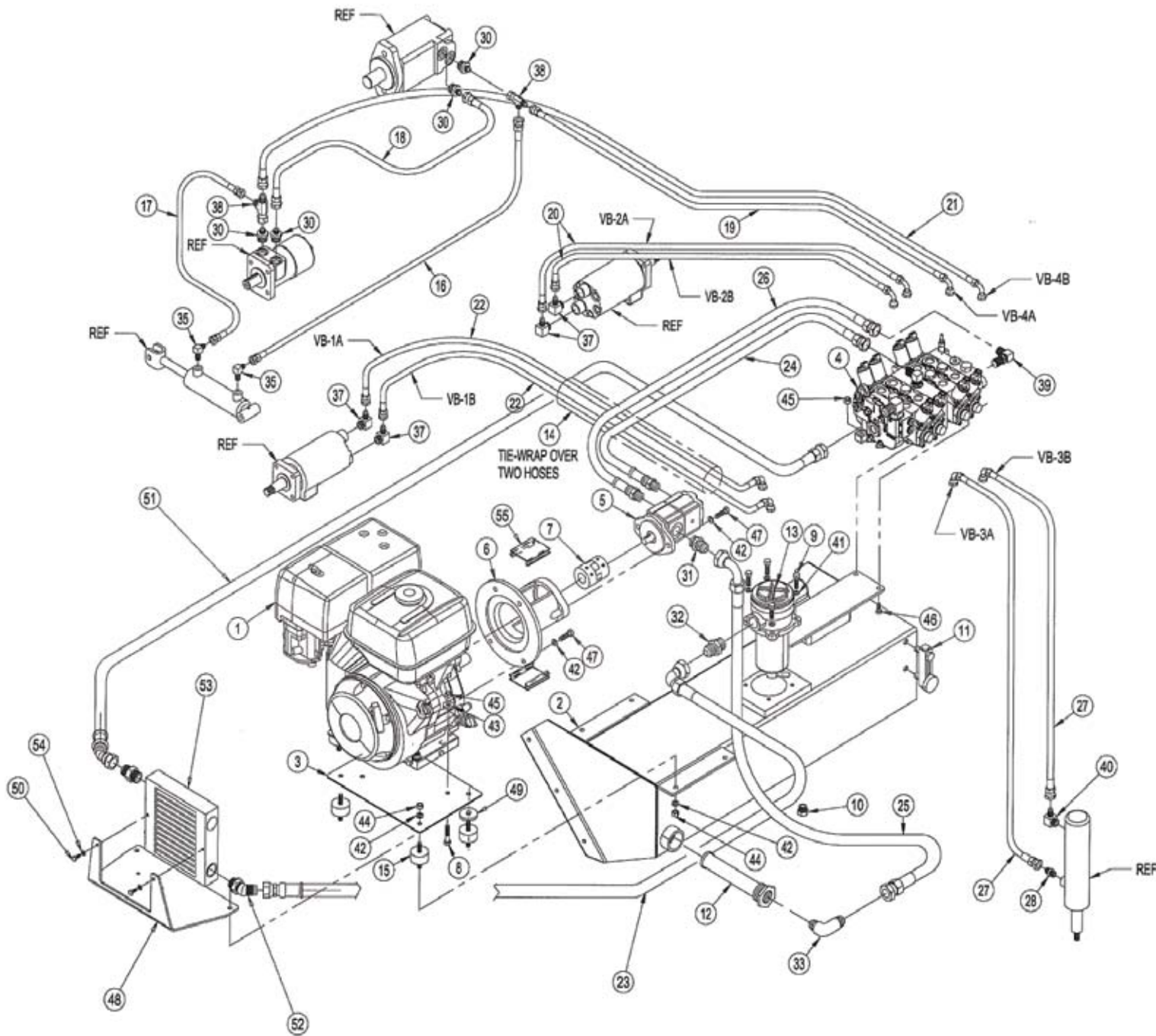
# SEPARATOR ASSEMBLY



ITEM	QTY	PART#	DESCRIPTION
1	1	P350500	PARKER MOTOR TC0130FS100AAA
		P350501	SEAL KIT
2	1	M30018	SEPARATOR MOUNT
3	1	M30019	SEPARATOR MOTOR MOUNT
4	1	M30020	SEPARATOR ARM
5	2	P761100	SNUGULATOR 2500BD1X
6	1	P851104	1/4" LOCK WASHER
7	4	P851106	3/8" LOCK WASHER
8	1	P852608	1/2" HARD WASHER
9	1	P155400	3/8" JAM NUT
10	2	P157200	1/2" JAM NUT
11	1	P108505	5/16" X 5/16" SET SCREW
12	1	P100404	1/4" X 1" HEX BOLT
13	4	P100603	3/8" X 3/4" HEX BOLT
14	1	P098608	3/8" X 2" FULL THD HEX BOLT
15	1	P100804	1/2" X 1" HEX BOLT
16	2	P100812	1/2" X 3" HEX BOLT

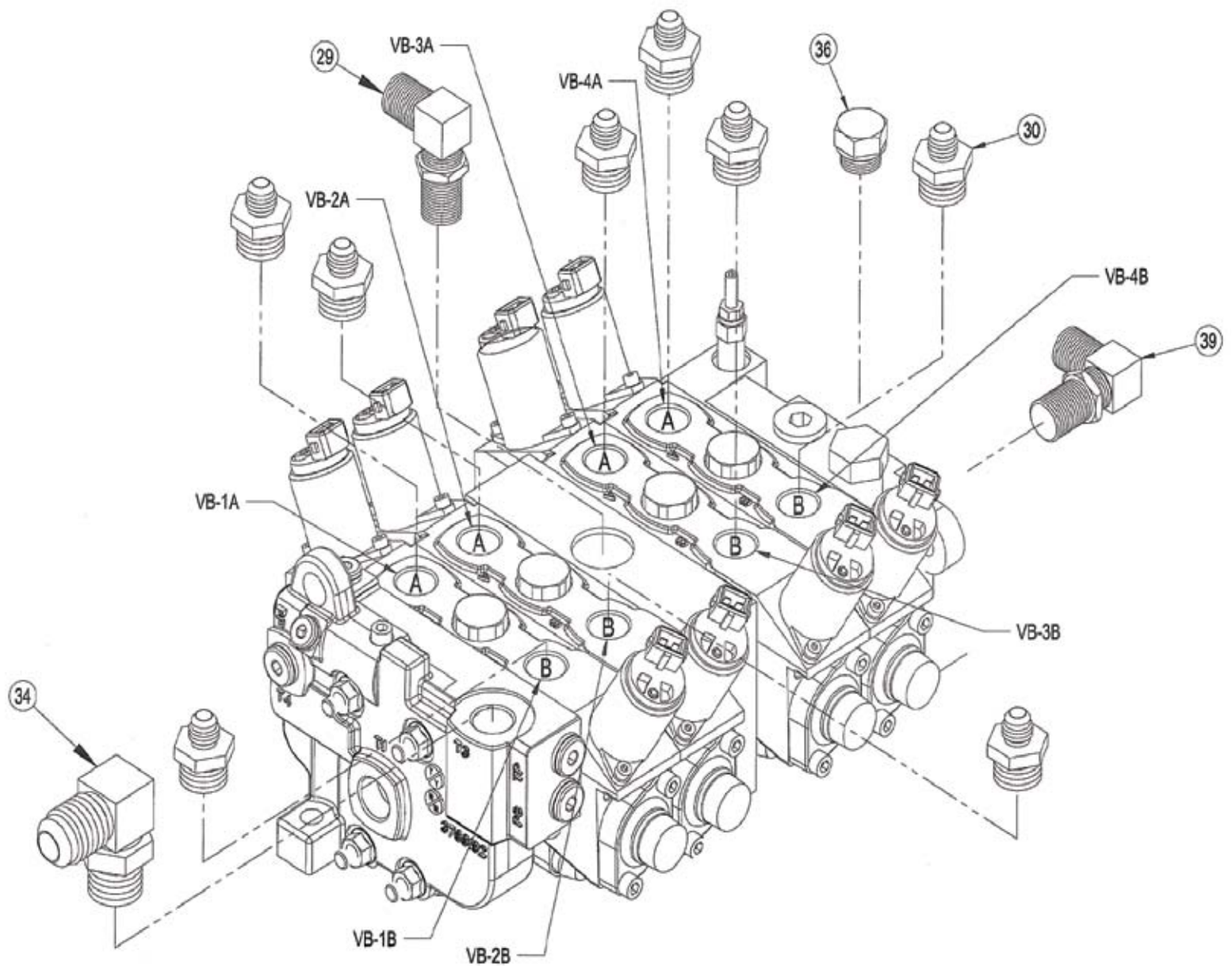


# HYDRAULIC ASSEMBLY



See part number reference on page 38.

# HYDRAULIC ASSEMBLY



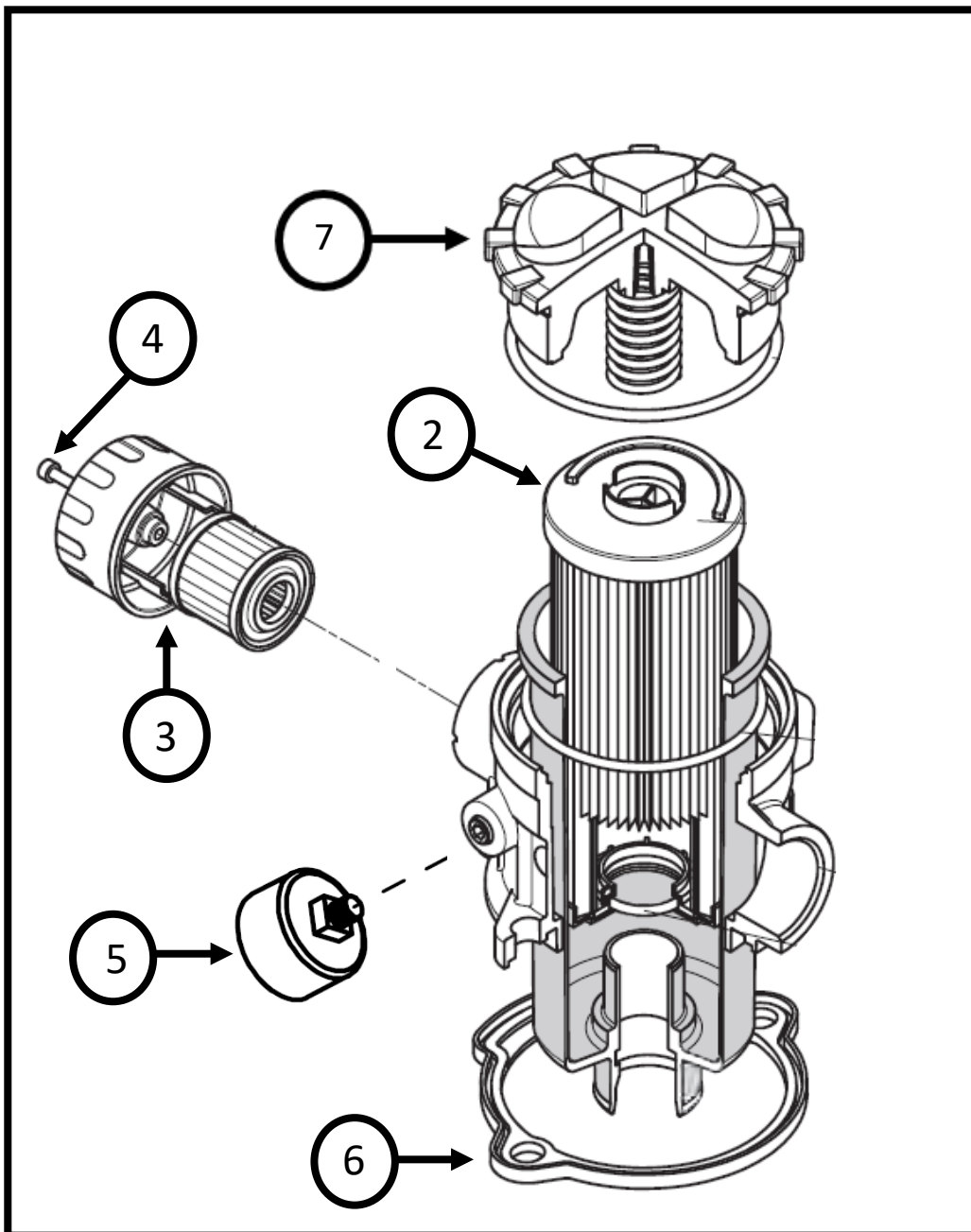
# HYDRAULIC ASSEMBLY

ITEM	QTY	PART ID	PART DESCRIPTION
1	1	P370900	MOTOR: HONDA, 11 HP
2	1	950006	RESERVOIR: HYDRAULIC, 950
3	1	950009	PLATE: ENGINE, MOUNT
4	1	P375010	VALVE: 4 SECTION PARKER P70 GEN II
		P375011	SOLENOID & COIL KIT #398000MA12 (12 VOLT)
5	1	P359100	PUMP: GEAR
6	1	P361100	MOUNT: PUMP, BF 4
7	1	P370020	COUPLER: DRIVE KIT
8	4	P100607	BOLT: HEX, 3/8" X 1 3/4"
9	4	P100504	BOLT: HEX, 5/16" X 1" G.5Z
10	1	P278005	PLUG: O-RING, #8
11	1	P297305	GAUGE: TEMP, SIGHT LEVEL
12	1	P610500	STRAINER: TANK
13 *	1	P371840	FILTER: MPT 100 HOUSING ASSY
14	1	R99000105	SLEEVING: CORDURA, 30" LONG
15	4	P133030	MOUNT: RUBBER
16	1	P246251	HOSE: 1/4" X 50", 4FJX 6FJX
17	1	P244160	HOSE: 1/4" X 16", 4FJX 6FJX
18	1	P248042	HOSE: 3/8" X 42", 6FJX 6FJX
19	1	P248041	HOSE: 3/8" X 41", 6FJX 6FJX90°
20	2	P248070	HOSE: 3/8" X 70", 6FJX 6FJX90°
21	1	P248066	HOSE: 3/8" X 66", 6FJX 6FJX90°
22	2	P248088	HOSE: 3/8" X 88", 6FJX 6FJX90°
23	1	P255994	HOSE: 3/4" X 24", 12FJX 12FJX90°
24	1	P251024	HOSE: 1/2" X 24", 8MB 8FJX
25	1	P255971	HOSE: 3/4" X 21", SUCTION, 12FJX 12FJX90°
26	1	P251636	HOSE: 1/2" X 36", 8MB 8FJX
27	2	P246241	HOSE: 1/4" X 41", 6FJX 6FJX90°
28	1	P276101	ADAPTER: 6MB 6MJ
29	1	P261010	ADAPTER: 8MB 8MJ90°
30	12	P276215	ADAPTER: 10MB 6MJ
31	1	P276450	ADAPTER: 12MB 12MJ
32	1	P277100	FITTING: 12MJ 16MB
33	1	P268850	FITTING: ELBOW, 16MP 12MJ90°
34	1	P276470	ELBOW: 10MB 12MJ90°
35	2	P261410	ELBOW: 4MP 4MJ90°
36	1	P270920	PLUG: 10MB
37	4	P261530	ELBOW: 8MB 6MJ90°
38	2	P265550	TEE: 6FJX 6MJ 6MJ
39	1	P261610	FITTING: 8MJ 10MB90°
40	1	P261350	FITTING: 6MJ 6MB90°
41	4	P850104	WASHER: FLAT ZINC, 1/4"
42	14	P851106	WASHER: LOCK, 3/8"
43	4	P850806	WASHER: FLAT, 3/8", SAE GR8
44	8	P150600	NUT: HEX, 3/8"
45	7	P155450	NUT: TOP LOCK, 3/8"
46	3	P100606	BOLT: HEX, 3/8" X 1 1/2"GR5Z
47	6	P100605	BOLT: HEX, 3/8" X 1 1/4"
48	1	950013	MOUNT, OIL COOLER
49	2	M5009-5	WASHER, 3/16 X 1 1/4 X 1 3/4
50	2	P103820	BOLT: 6M X 16M HEX
51	1	P255938	HOSE: 12 X 38, 12FJX , 12FJX45
52	1	P276515	FITTING: 12MJ 12MB45
53	1	P610260	OIL COOLER
54	2	P851104	WASHER: LOCK 1/4"
55	2	P370021	CAP, PUMP DRIVE

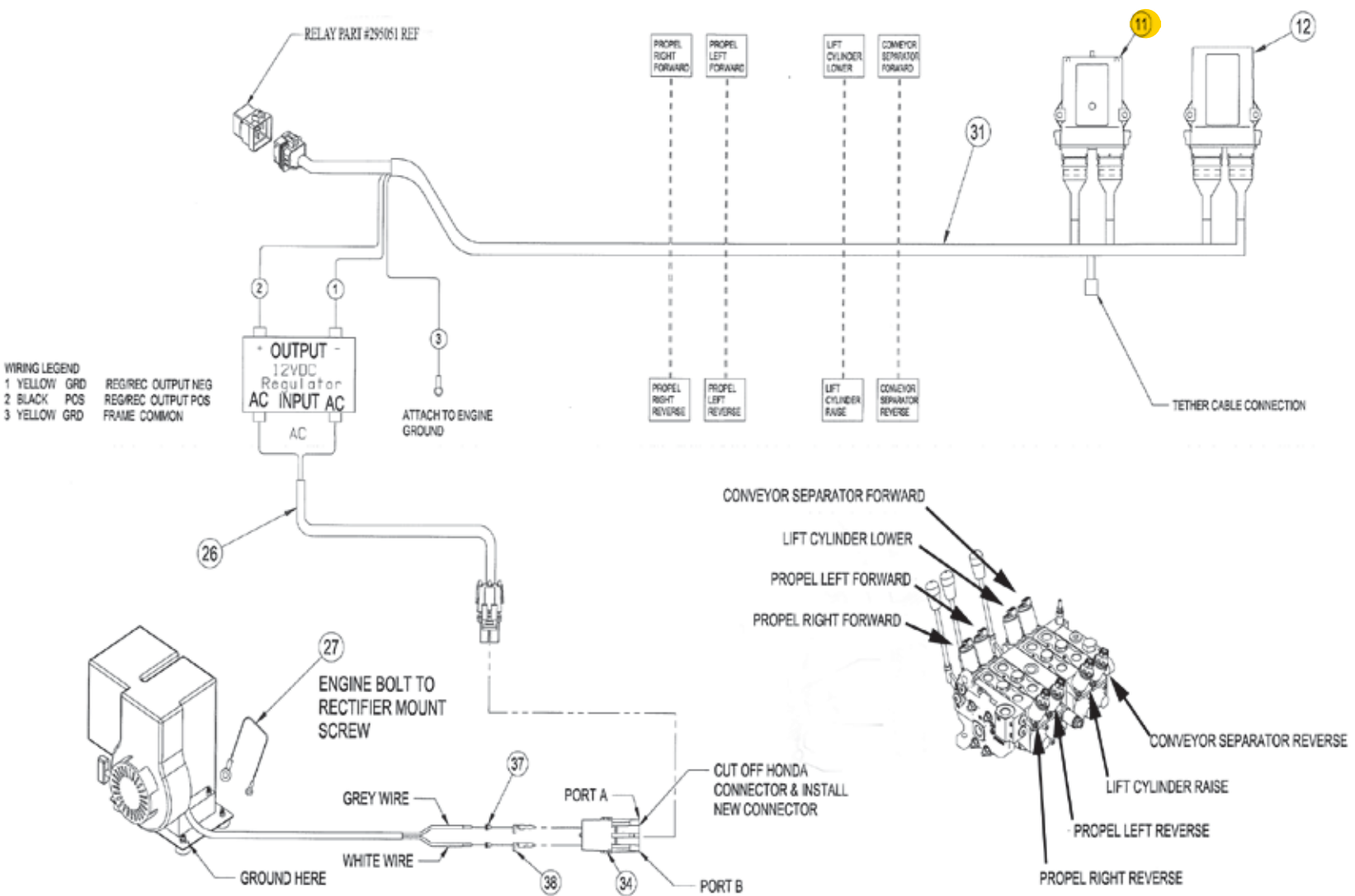
71.P371841 REPLACEMENT HYDRAULIC FILTER ONLY

# HYDRAULIC FILTER HOUSING

- 1) 71.P371840 Complete filter housing: includes base gasket and 10-micron filter element
- 2) 71.P371841 Filter element 10-micron
- 3) 71.P371842 Breather filter element / housing
- 4) 71.P110160 Mounting screw M4 - .7 X 25 mm socket head cap screw
- 5) 71.P297170 Filter indicator gauge
- 6) 71.P371839 Base gasket
- 7) 71.P371844 Cover with spring



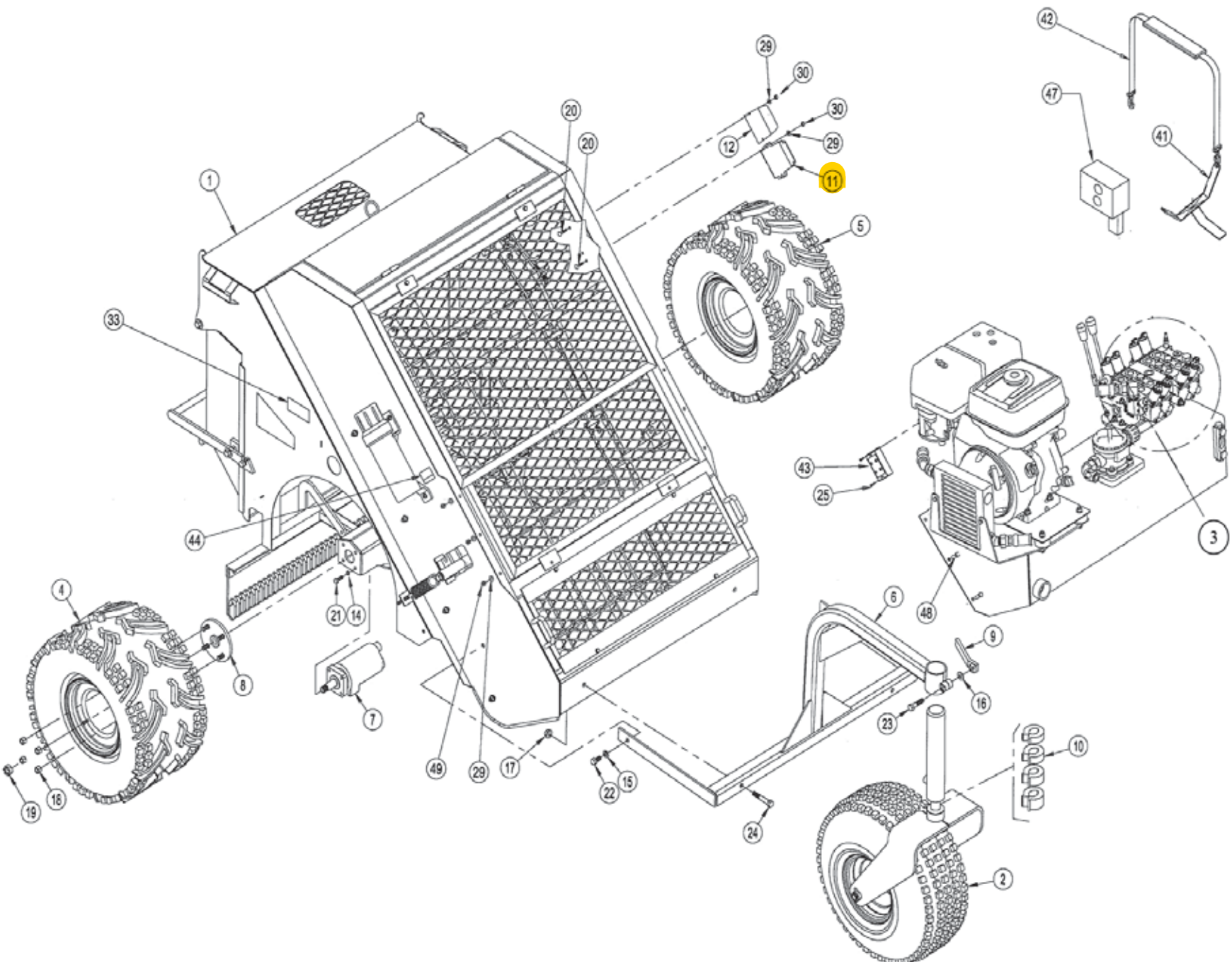
# DRIVE ASSEMBLY - WIRING DIAGRAM



See part number reference on page 41.

(95BBB081)



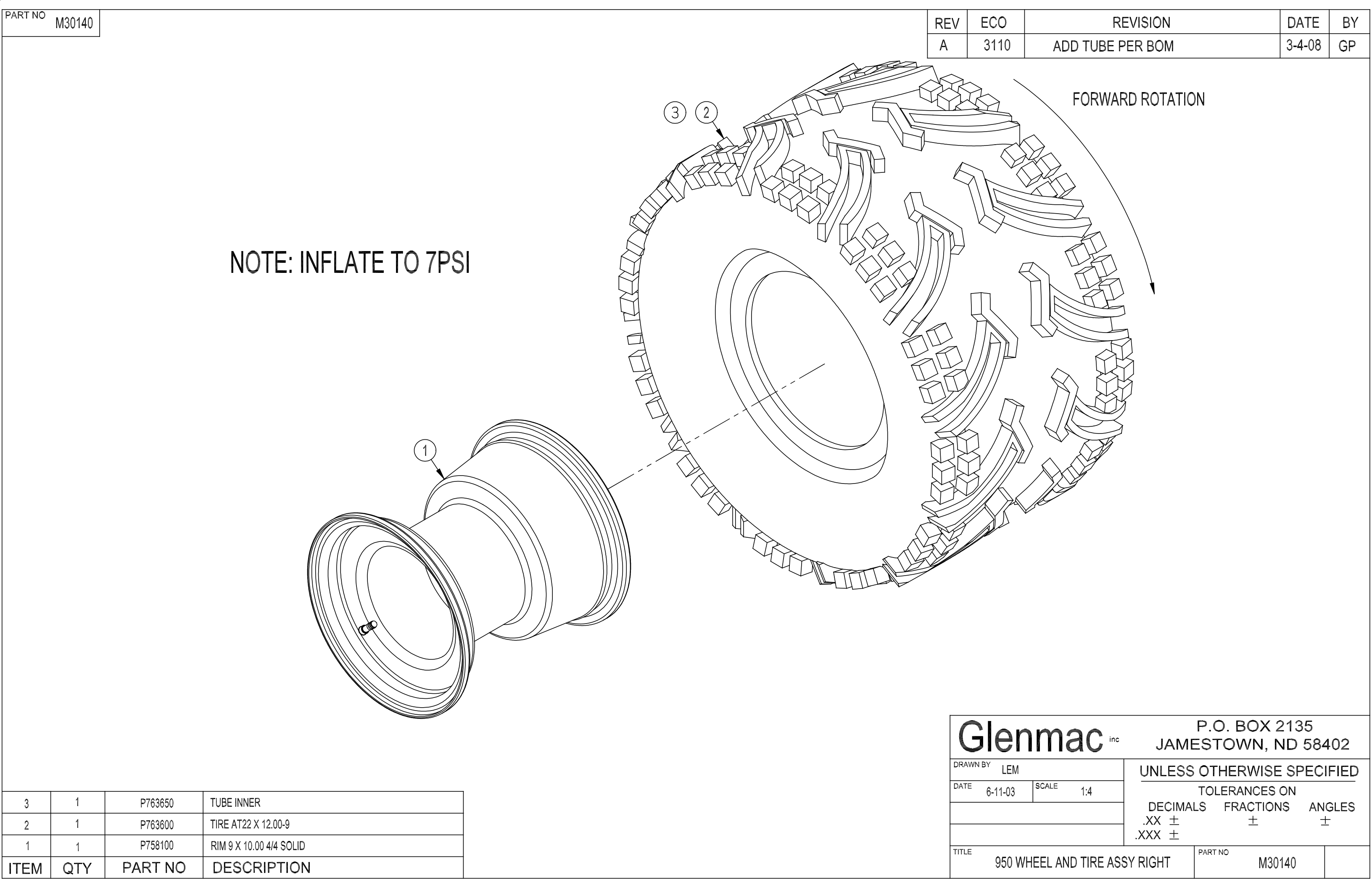


## DRIVE ASSEMBLY



# DRIVE ASSEMBLY

ITEM	QTY	PART ID	PART DESCRIPTION
1	1	M30000	ASSEMBLY: MAIN
2	1	M30124	ASSEMBLY: CASTER WHEEL
3	1	950027	ASSEMBLY: HYDRAULIC, 950
4	1	M30140	ASSEMBLY: WHEEL AND TIRE, RIGHT
5	1	M30141	ASSEMBLY: WHEEL AND TIRE, LEFT
6	1	M30113	MOUNT: CASTER PIVOT
7	2	P350800	MOTOR: PARKER (TEO295FR250AAA)
8	2	P758000	HUB, 4 BOLT
9	1	M6415	HANDLE: CASTER
10	1	P781000	STROKE CONTROL SET: (7/8", 1", 1 1/4", 1 1/2")
11	1	P296841	REMOTE CONTROL RECEIVER: CERVIS * see conversion notes page
12	1	P296815	CONTROLLER: DVC 7
13	1	P002020	CHARGER: BATTERY, (AA)
14	8	P851106	WASHER: LOCK, 3/8"
15	2	P851108	WASHER: LOCK, 1/2"
16	1	P852608	WASHER: HARD, 1/2"
17	2	P155850	NUT: TOP LOCK, 1/2"
18	8	P756165	NUT: WHEEL, 1/2"-20
19	2	REF	NUT: TOP LOCK, 3/4" (REFER TO P350800)
20	4	P104405	BOLT: CARRIAGE, 1/4" X 1 1/4"
21	8	P100604	BOLT: HEX, 3/8" X 1"
22	2	P100804	BOLT: HEX, 1/2" X 1"
23	1	P102808	BOLT: HEX, FINE THREAD, 1/2" X 2"
24	2	P100812	BOLT: HEX, 1/2" X 3"
25	3	P111140	SCREW: TAPPING, #10-32 X 1/2"
26	1	950017	ASSEMBLY: CABLE, 950
27	1	950016	ASSEMBLY: GROUND WIRE
28	1	M30200	CRATE: SHIPPING
29	10	P850104	WASHER: FLAT, 1/4"
30	4	P158003	NUT: NYLOCK, 1/4"
31	1	P296816	HARNESS: WIRING, CERVIS
32	1	P974000	DECAL: STANDARD CE SHEET (SEE PAGE 10)
33	1	P979501	DECAL: 950
34	1	P270314	PLUG: SHROUD, 2 CONN
35	1	P610600	HOSE: OIL DRAIN (NOT SHOWN)
36	1	P371670	FILTER: FUEL
37	2	P295812	SEAL: CABLE, GREEN
38	2	P295097	TERMINAL: MALE
39	1	P297310	GAUGE: TIRE PRESSURE
40	1	P296817	REMOTE TEATHERED CABLE
41	1	950024	REMOTE CONTROL MOUNT
42	1	M30150	REMOTE CONTROL CARRIER STRAP
43	1	P298900	REGULATOR: VOLTAGE, RECTIFIER
44	1	P370190	HOURLMETER
45	1	P370904	DEFLECTOR: MUFFLER
46	3	P370905	SCREW: MUFFLER DEFLECTOR
47	1	P296840	REMOTE CONTROL HANDHELD CERVIS
48	6	P100503	BOLT: HEX, 5/16" X 3/4"
49	6	P155350	NUT: TOP LOCK, 5/16"
50	2	M30105	SHIPPING STRAP (not shown)
51	1	P970004	DECAL CE PRESENTATION

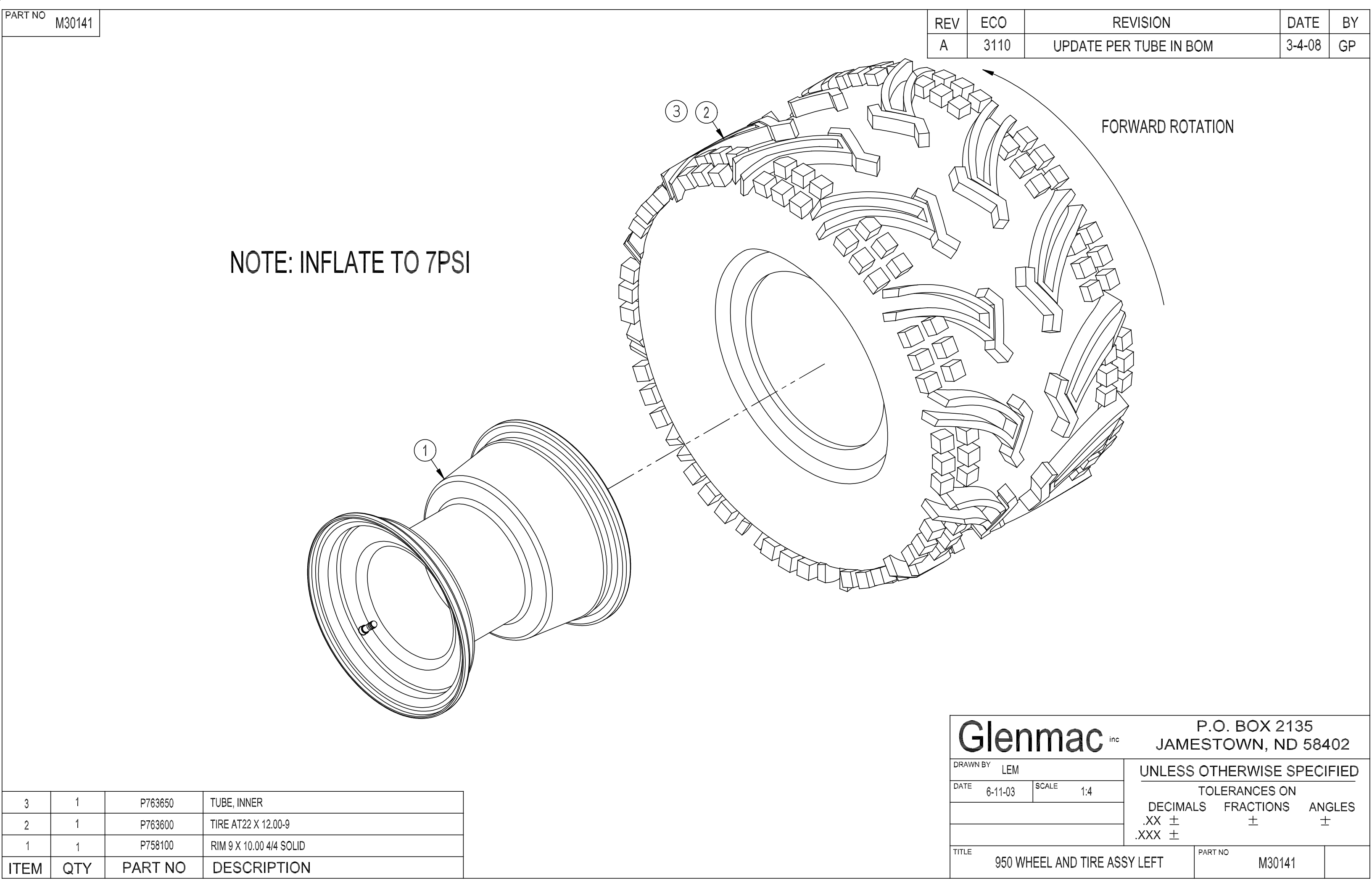


PART NO	M30140
---------	--------

REV	ECO	REVISION	DATE	BY
A	3110	ADD TUBE PER BOM	3-4-08	GP

3	1	P763650	TUBE INNER
2	1	P763600	TIRE AT22 X 12.00-9
1	1	P758100	RIM 9 X 10.00 4/4 SOLID
ITEM	QTY	PART NO	DESCRIPTION

<b>Glenmac</b> inc		P.O. BOX 2135 JAMESTOWN, ND 58402	
DRAWN BY LEM		<b>UNLESS OTHERWISE SPECIFIED</b>  TOLERANCES ON  DECIMALS    FRACTIONS    ANGLES  .XX ±           ±           ± .XXX ±	
DATE 6-11-03	SCALE 1:4		
TITLE 950 WHEEL AND TIRE ASSY RIGHT		PART NO M30140	



PART NO	M30141
---------	--------

REV	ECO	REVISION	DATE	BY
A	3110	UPDATE PER TUBE IN BOM	3-4-08	GP

3	1	P763650	TUBE, INNER
2	1	P763600	TIRE AT22 X 12.00-9
1	1	P758100	RIM 9 X 10.00 4/4 SOLID
ITEM	QTY	PART NO	DESCRIPTION

Glenmac <sup>inc</sup>		P.O. BOX 2135 JAMESTOWN, ND 58402	
DRAWN BY LEM		UNLESS OTHERWISE SPECIFIED  TOLERANCES ON  DECIMALS    FRACTIONS    ANGLES .XX ±                    ±                    ± .XXX ±	
DATE 6-11-03	SCALE 1:4		
TITLE 950 WHEEL AND TIRE ASSY LEFT		PART NO M30141	

## CBC MDL 950 SN# 95BBB081 THRU 95CBF320

Units within the provided serial number range are equipped with CERVIS SMART RECEIVER dual port PN# 71.P296841

CERVIS SMART RECEIVER DUAL PORT 71.P296841 IS A DISCONTINUED ITEM WITH LIMITED AVAILABILITY WHEN CURRENT INVENTORY IS DEPLETED A CONVERSION WILL BE REQUIRED TO REPLACE.

OPTION A - CONVERSION ITEMS REQUIRED TO REPLACE 71.P296841 SMART RECEIVER DUAL PORT  
(conversion will retain / utilize the original main chassis wiring harness)

71.P296839 ADAPTER HARNESS: DUAL PORT CONNECTOR TO SINGLE PORT CONNECTOR

71.P296843 CERVIS SMART RECEIVER SINGLE PORT

OPTION B - CONVERSION TO REPLACE 71.P296841 SMART RECEIVER DUAL PORT  
(conversion will replace / update main chassis harness)

UNITS EQUIPPED WITH NON ELECTRIC START HONDA ENGINES

71.P296828 950 MAIN CHASSIS HARNESS SINGLE PORT

71.P296843 CERVIS SMART RECEIVER SINGLE PORT

UNITS EQUIPPED WITH ELECTRIC START HONDA ENGINES:

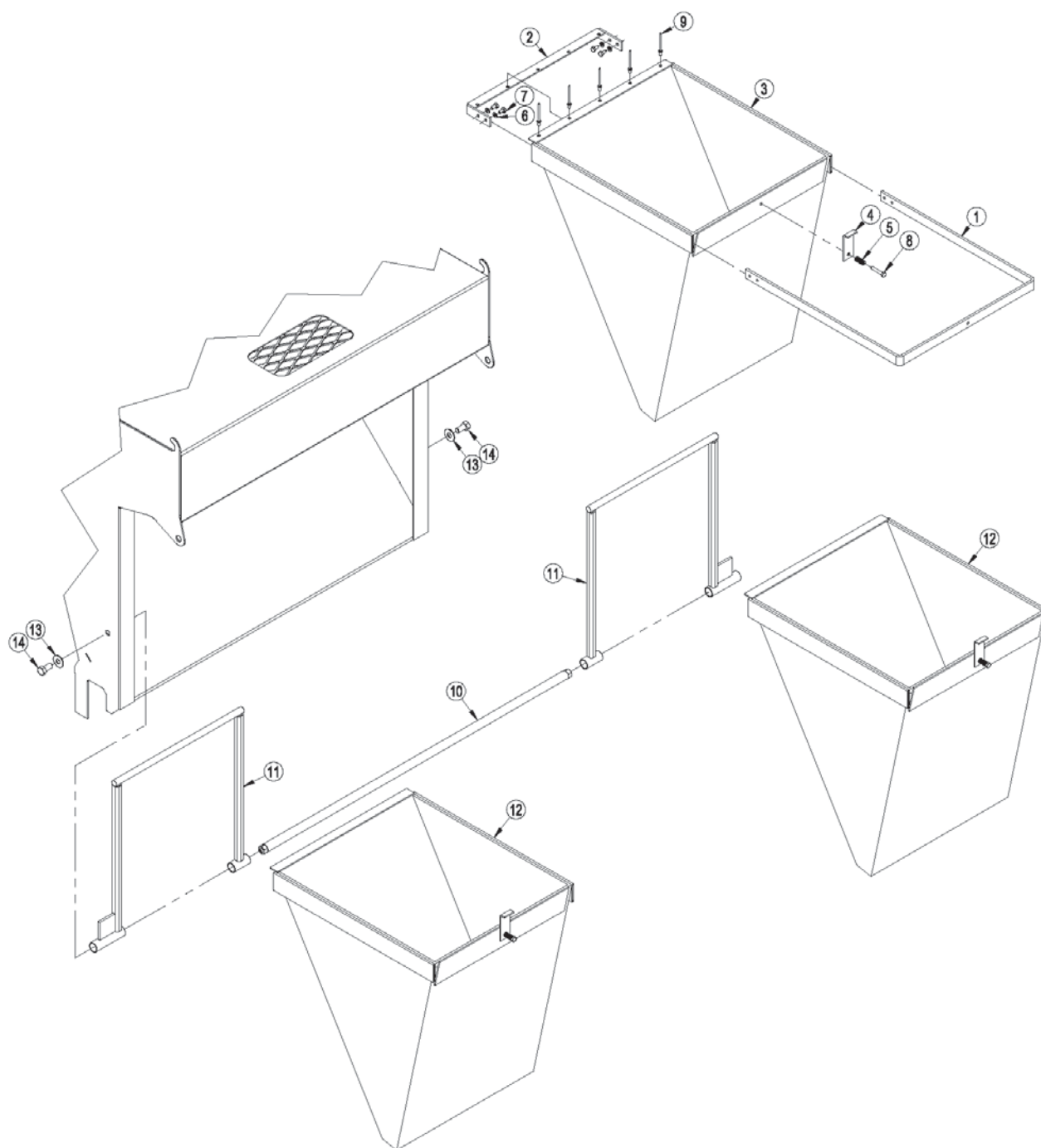
71.950044 950 MAIN CHASSIS HARNESS SINGLE PORT

71.P296843 CERVIS SMART RECEIVER SINGLE PORT



## OPTIONAL COLLECTION BAG ASSEMBLY

A collection bag assembly is available as an add-on option to your Model 950.



## OPTIONAL COLLECTION BAG ASSEMBLY

<u>Item</u>	<u>Qty</u>	<u>Part ID</u>	<u>Description</u>
1	1	M30157	BAGGER TOP HOLDER
2	1	M30158	TOP HOLDER BRACKET
3	1	M30159	COLLECTION BAG
4	1	M30161	BAG LATCH
5	1	P601050	SPRING: COMPRESSION, .48 OD X 1"
6	4	P851104	WASHER: LOCK, 1/4"
7	4	P100402	BOLT: HEX, 1/4" X 1/2"
8	1	P100406	BOLT: HEX, 1/4" X 1 1/2"
9	5	P126272	POP RIVET: LARGE FLANGE, 1/8" X 3/8"
10	1	M30156	BAGGER CROSS BAR
11	2	M30155	BAGGER MOUNT
12	2	M30162	COLLECTION BAG ASSEMBLY
13	2	P850107	WASHER: FLAT, 7/16"
14	2	P100804	BOLT: HEX, 1/2" X 1"

71.M30160 Complete collection bagger kit (includes items 1 - 14)

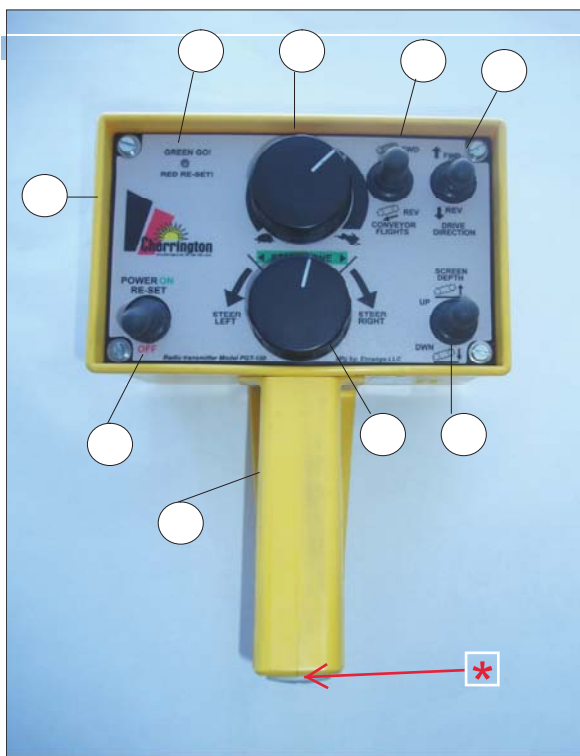


ENRANGE REMOTE CONTROL: USED ON EARLY CBC MDL 950

ENRANGE HANDHELD REMOTE AND RECEIVER ARE OBSOLETE  
REPAIR PARTS AND SERVICES ARE UNSUPPORTED.

IF CONTROL SYSTEM HAS FAILED: REQUIRES COMPLETE SYSTEM UPDATE.  
UPDATE WITH COMPLETE CERVIS CONTROL PACKAGE P/N 71.P296842

ENRANGE (YELLOW) HANDHELD REMOTE



\* ONLY REPLACEMENT ITEMS AVAILABLE

71.P002020 BATTERY CAP ONLY

71.P280952 BATTERY CAP AND BATTERY TUBE ASSY.

CERVIS (BLACK) HANDHELD REMOTE



CERVIS (BLACK) HANDHELD REMOTE  
CURRENT REMOTE USED ON CBC 950