

Cherrington
Model 5000

Cherrington Parts & Service Toll free 1-800-966-1588

Parts Manual

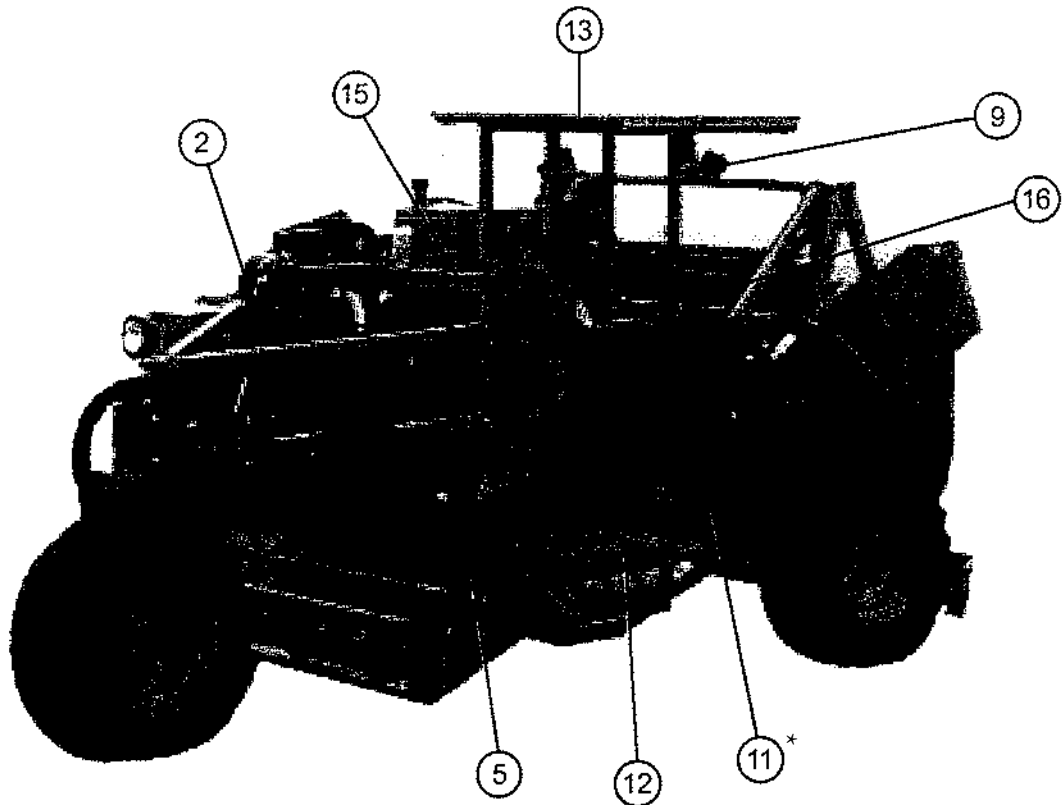
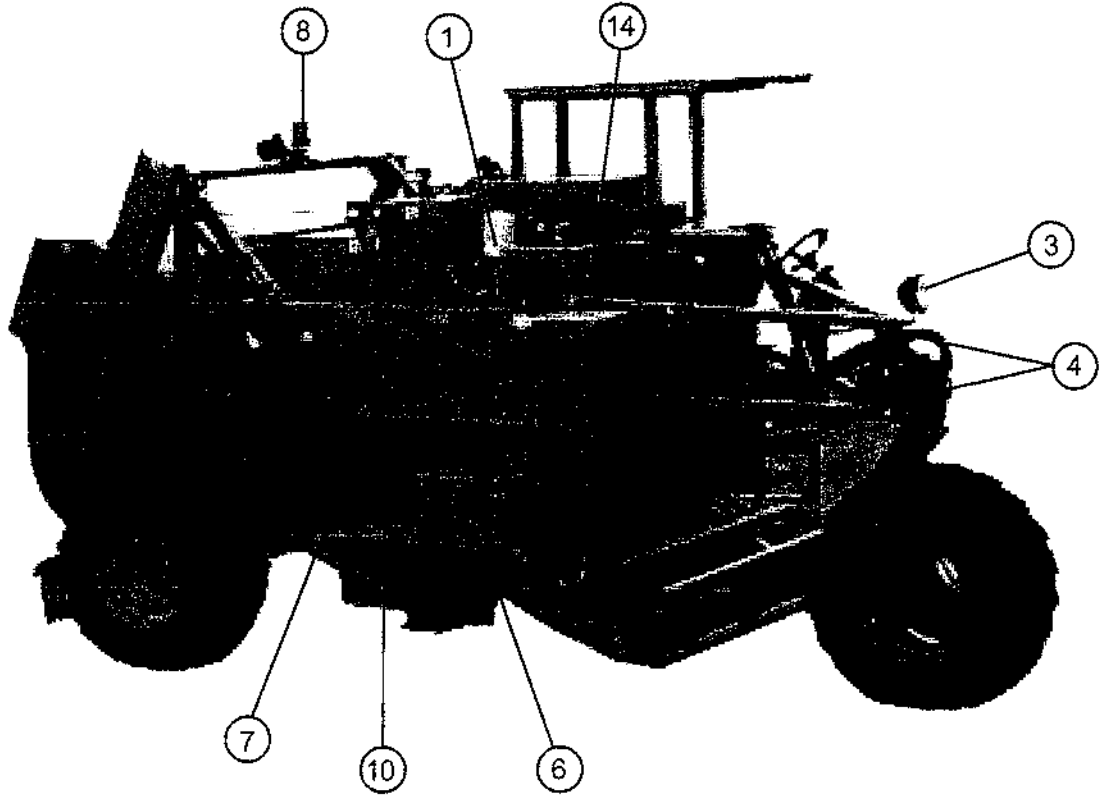
TABLE OF CONTENTS

Table of Contents	1
Overall Machine Legend	2-5
Engine/Pump/Radiator (704LTE)	6-7
Transmission/Drive Coupling Assy	8
Air Cleaner	9
Exhaust System	10
Exhaust Shielding	11
Fuel System	12
Throttle/Transmission Linkage	13
Right Wheel Assy.	14
Left Wheel Assy.	15
Left Wheel Assy. (Cab)	16
Front Wheel Assy.	17
Screen System	18
Oscillator Mechanism	19
Flight System	20
Conveyor Support Assy.	21
Conveyor Shaft Assy.: Front & Rear	22
Conveyor Drive Mechanism	23
Power Steering Components	24
Controls and Gauges	25
Hopper and Rollover Components	26-27
Oil Tank Assy.	28
Emergency Tow Jack.....	29
Groomer Assy.	30
Wiring Diagram	31
Hydraulic Return/Cooler Circuit	32
Hopper Lift Circuit.....	33
Hopper Rollover Circuit	34
Digger/Groomer Circuit	35
Conveyor/Oscillator Circuit.....	36
Hydrostatic Drive Circuit.....	37
Power Steering Circuit	38
Wheel Motor Case Drain Circuit	39

OVERALL MACHINE LEGEND

REF NO.	PART NO.	DESCRIPTION	QTY
1	P371730	FILTER: HYD ASSY	2
	P297170	GAUGE: IND LP CI-20	1
	P297190	GAUGE: IND VAC GV-5	1
	P371810	FILTER: HYD ELMT	
2	P259305	CYLINDER, 2B X 10S w/CAV	1
	005248	PIN: CYL/JACK	2
	P294250	VALVE: PILOT CHECK CARTRIDGE	1
	P781000	STROKE CONTROL SET	1
	003076	STOP, DIGGER CYL, SAFETY	1
	P123005	LOCK PIN: 5/16"	1
	P259306	SEAL KIT: RKT2-0096	1
	004976	BRKT, DIGGER CYL ADJ	1
3	P312100	LIGHT: HEAD	1
4	000587W	STABILIZER ARM WLD	4
	000622M	SPACER, STABILIZER 2-9/16	4
	P620600	GREASE FITTING: 1/4"-28 TAPER X 35/64	4
5	P312700	LIGHT: WORKING	3
6	004971	BATTERY BOX, 5000	1
	000730W	COVER, BATTERY BOX	1
7	P292700	JUNCTION MANIFOLD	1
8	P312600	LIGHT: STROBE	1
9	P001720	ALARM: BACK-UP, PRECO 45AA	1
10	P259315	CYLINDER, 2B X 42S w/CAV	2
	P294250	VALVE: PILOT CHECK CARTRIDGE	2
	P259316	SEAL KIT: RKT2-0087	1
11*	P600300	SEAT: GRAMMER GS-12 ASSEMBLY	1
	005170	SEAT POST WLD	1
	P999000	BOX: OWNERS MANUAL	1
12	004982	PLATFORM, FOOT	1
13	000774A	CANOPY	1
14	P298150	SWITCH: MASTER	1
	P296950	FACE PLATE: MASTER SWITCH	1
15	004977	SHIELD, RADIATOR COVER	1
16	004988	GUARD, CONV.	1

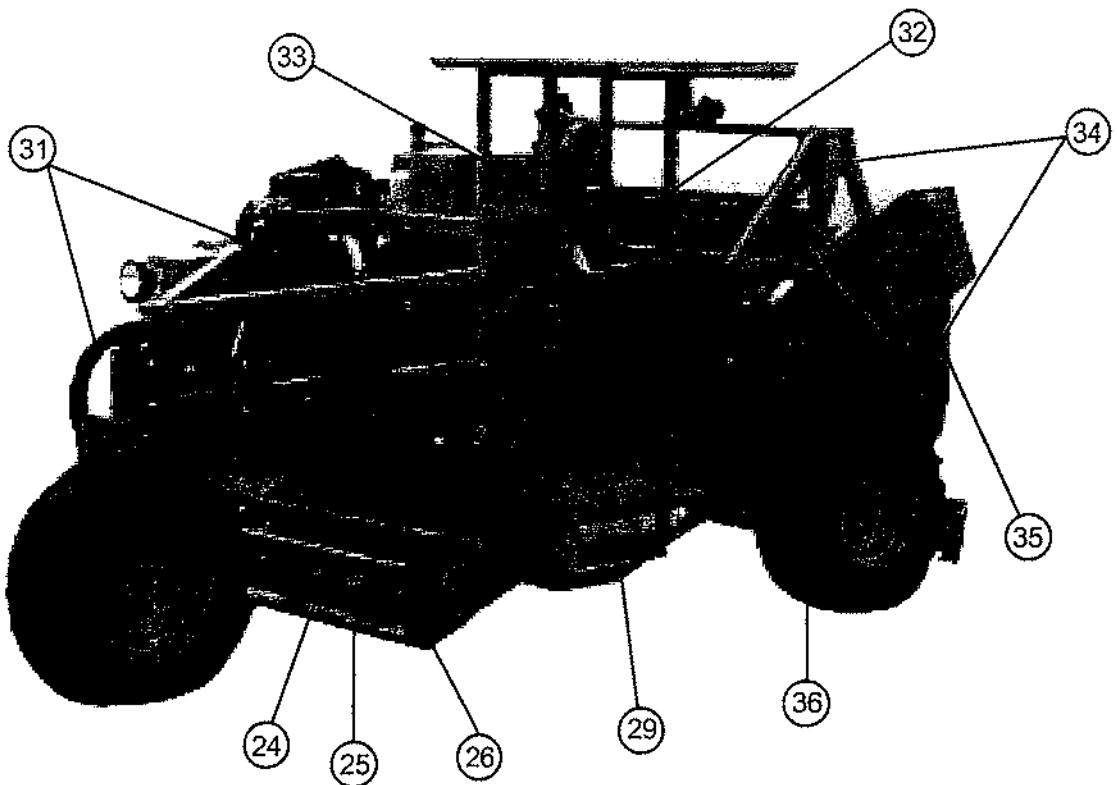
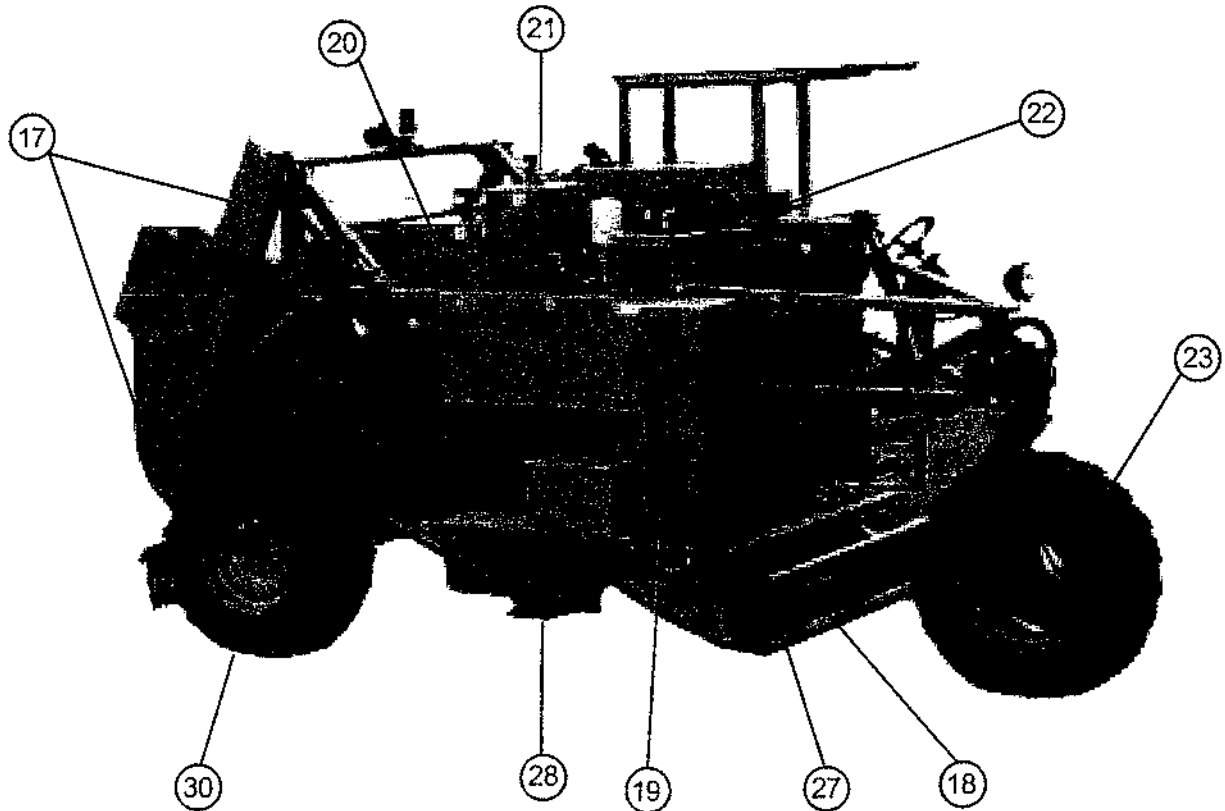
OVERALL MACHINE LEGEND



OVERALL MACHINE LEGEND

REF NO.	SEE PAGE	DESCRIPTION
17	26-27	HOPPER AND ROLLOVER COMPONENTS
18	10	EXHAUST SYSTEM
19	11	EXHAUST SHIELDING
20	12	FUEL SYSTEM
21	28	OIL TANK
22	9	AIR CLEANER
23	17	WHEEL ASSEMBLY (FRONT)
24	20	FLIGHT SYSTEM
25	18	SCREEN AND DIGGER POINT SYSTEM
26	22	FRONT CONVEYOR SHAFT
27	21	FRONT CONV. SUPPORT ASSY
28	19	OSCILLATOR MECHANISM
29	29	EMERGENCY TOWING
30	14	WHEEL ASSEMBLY (RIGHT)
31	24	POWER STEERING COMPONENTS
32	13	THROTTLE AND TRANS LINKAGE
33	25	CONTROLS AND GAUGES
34	26-27	HOPPER SYSTEM
35	23	CONVEYOR DRIVE MECHANISM
36	15-16	WHEEL ASSEMBLY (LEFT)

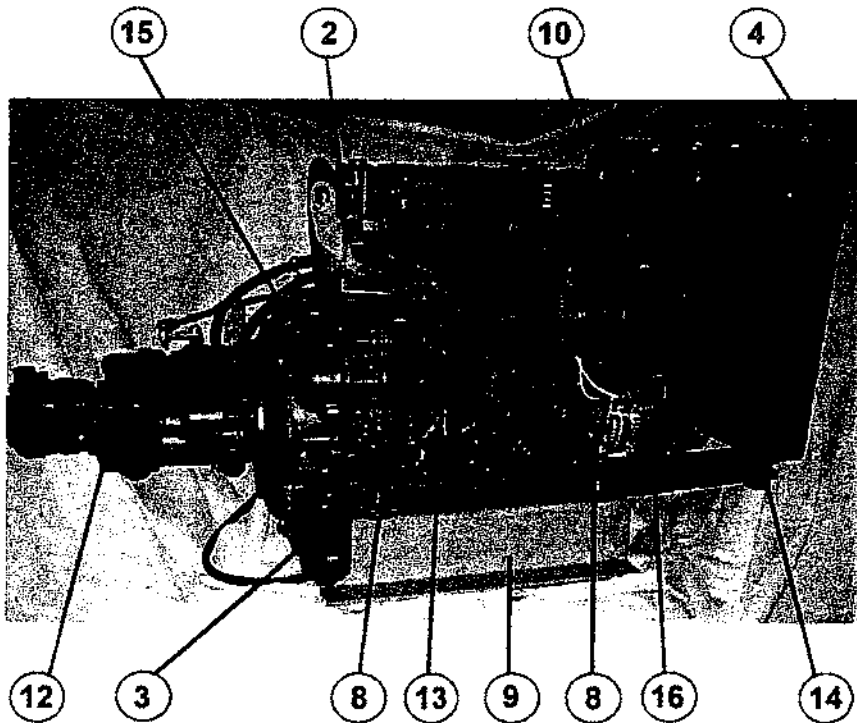
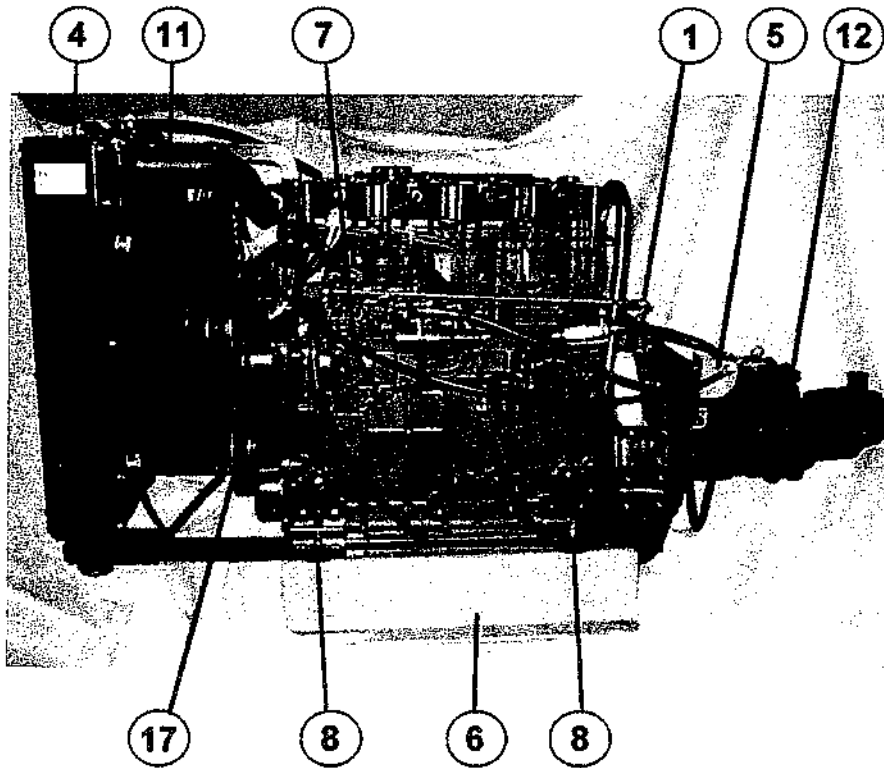
OVERALL MACHINE LEGEND



ENGINE/PUMP/RADIATOR (704LTE)

REF NO.	PART NO.	DESCRIPTION	QTY
1	SEE PAGE 13	THROTTLE LINKAGE	1
2	P372900	SENDER: WATER TEMP M18 X 1.5"	1
3	P371620	FILTER: FUEL 704LT	1
4	P593000	RADIATOR: 704LTE	1
5	SEE PAGE 13	BRKT, TRANS. CONTROL CABLE	1
6	003727	BRKT, ENGINE MTG REAR 704LT	1
7	SEE PAGE 13	CABLE, PUSH-PULL, 52" X 2"	1
8	P133020	MT: RUBBER 1/2", 3/8-16 NC	4
9	003726	BRKT, ENGINE MTG FRONT 704LT	1
10	P371530	FILTER: ENG OIL 704LT	1
11	P269050	HOSE: RAD TOP 704LTE	1
12	SEE PAGE 8	PUMPS/DRIVE COUPLING ASSY	
13	P770200	STARTER: 704LT	1
14	P269030	HOSE: RAD LOW 704LTE	1
15	P372100	SENDER: ENG OIL PRES	1
16	P001820	ALTERNATOR: 704LTE	1
17	P006300	BELT: FAN/ALT 704LT	2

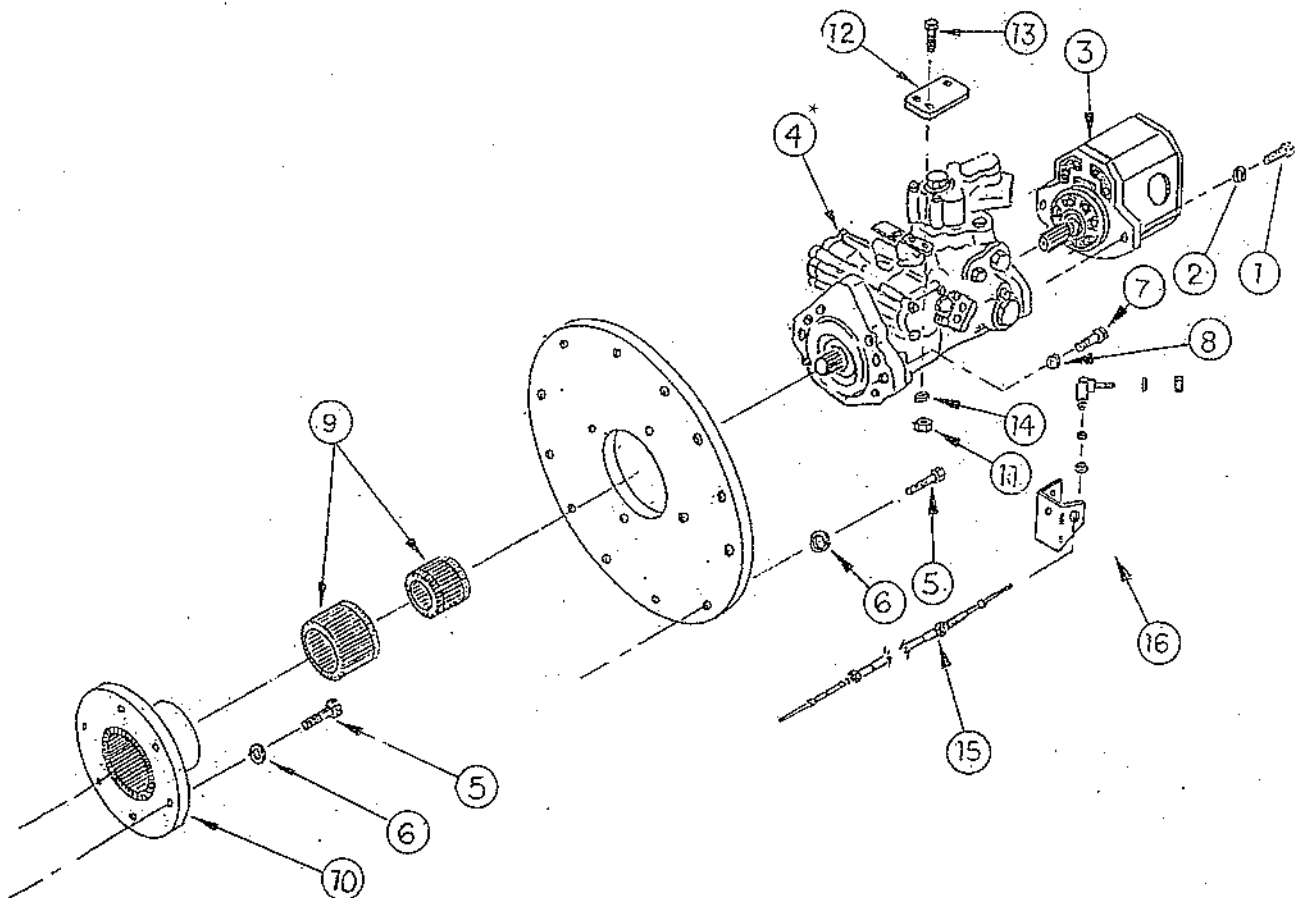
ENGINE/PUMP/RADIATOR (704LTE)



TRANSMISSION/DRIVE COUPLING ASSEMBLY

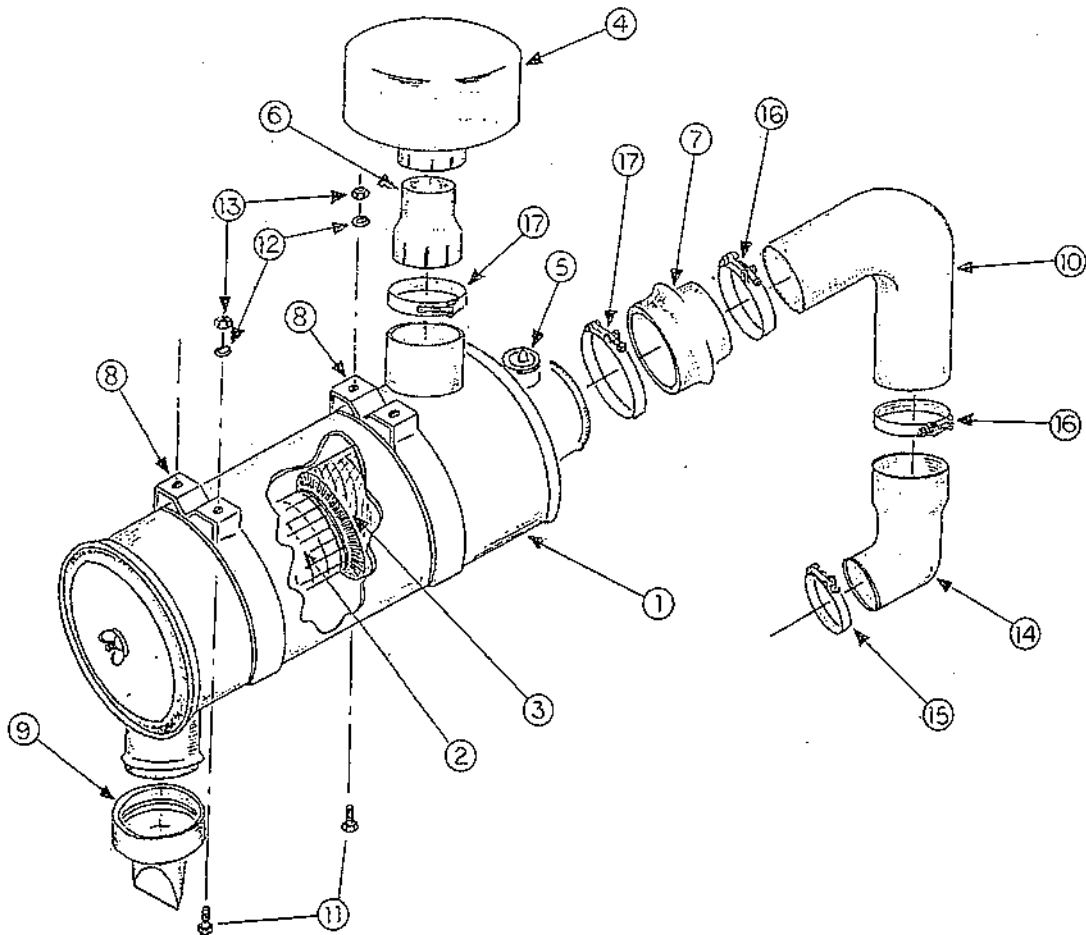
REF NO.	PART NO.	DESCRIPTION	QTY
1	P100605	BOLT: 3/8-16 NC X 1-1/4"	2
2	P851106	WASHER: LOCK 3/8"	2
3	P555100	PUMP: GEAR 26306-RAC LS	1
4*	P556550	PUMP: TRANS M46 W/NS	1
5	P103851	METRIC BOLT: M10-1.5 X 30	18
6	P851100	WASHER: LOCK M10	18
7	P110170	BOLT: SOC HD, M14-2.0 X 40 MM	2
8	P851102	WASHER: LOCK M14	2
9		DRIVE CPLG ASSY.	1
10		DRIVE CPLG HUB.	1
11	P155450	NUT: 3/8" TOP LOCK	2
12	003656	TAB, TRANS. CONTROL EXT.	1
13	P100603	BOLT: 3/8-16 NC X 3/4"	2
14	P851106	WASHER: LOCK, 3/8"	2
15	P115852	CABLE: PUSH-PULL 52"	1
16	005262	BRKT, M46 CABLE	1

* 71.P298161 NEUTRAL SAFETY SWITCH M46 (NOT SHOWN)



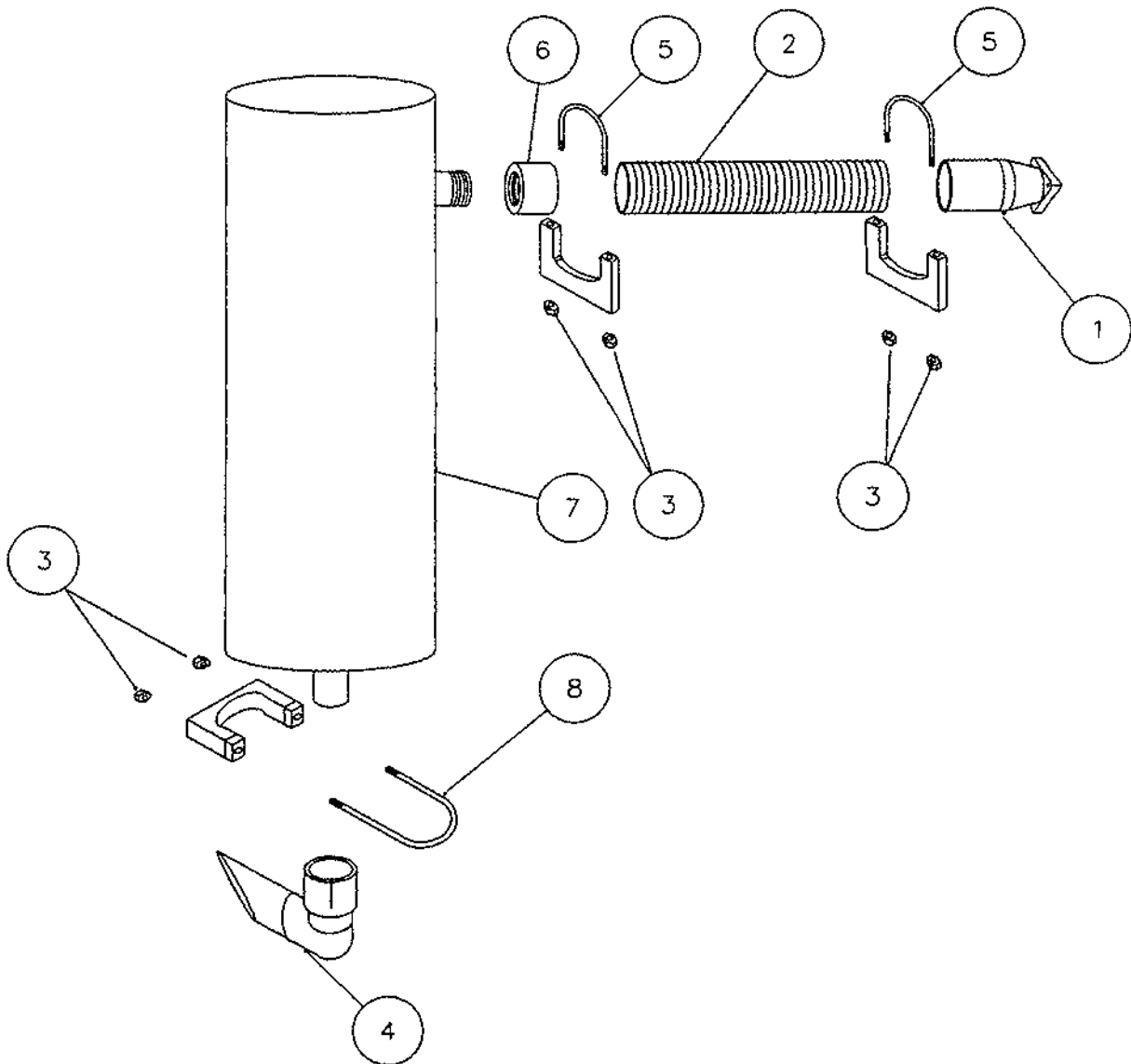
AIR CLEANER

REF NO.	PART NO.	DESCRIPTION	QTY
1	P001610	AIR CLNR: DON #FHG065359 (INCLUDES 2, 3, & 9)	1
2	P371375	FILTER: AIR, ELMT SAFETY	1
3	P371365	FILTER: AIR ELMT PRIME	1
4	P570100	PRE-CLNR: AIR	1
5	P297160	GAUGE: IND A/C DON #RAX002351	1
6	P267001	FITTING: PRE-CLNR	1
7	P269206	HOSE: REDUCER A/C	1
8	P133100	MTG BAND: A/C 6.5"	2
9	P293000	VALVE: VACUATOR 3"	1
10	003745	TUBE, 2-1/2" INTAKE ELBOW	1
11	P100403	BOLT: 1/4-20 NC 3/4"	4
12	P851104	WASHER: LOCK 1/4"	4
13	P155250	NUT: 1/4" TOP-LOCK	4
14	003742	HOSE, INTAKE COUPLER	1
15	P128850	CLAMP: HOSE, 2" ID T-BOLT	1
16	P128860	CLAMP: HOSE, 2-1/2" ID T-BOLT	2
17	P128870	CLAMP: HOSE, 3" ID T-BOLT	2



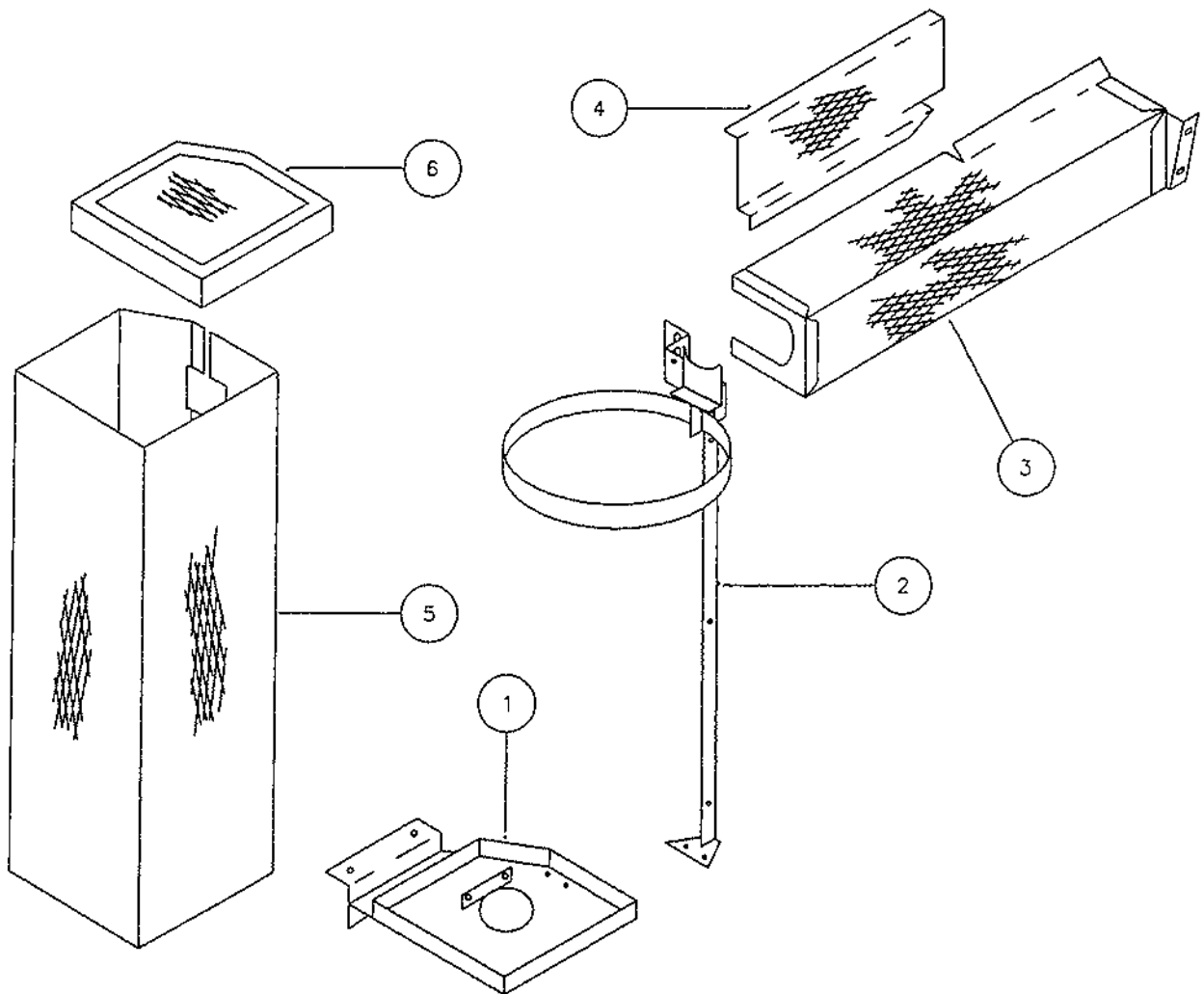
EXHAUST SYSTEM

REF NO.	PART NO.	DESCRIPTION	QTY
1	004964	EXHAUST MANIFOLD ADAPTER	1
2	P279120	FLEX TUBE: 3" X 22"	1
3	P155450	NUT: 3/8" TOP-LOCK	6
4	004965	EXHAUST DEFLECTOR SPOUT	1
5	P128940	CLAMP-U: 3" WKR	2
6	P272781	CPLG HALF: 2" NPT, 3M#, BLK	1
7	P722500	MUFFLER: BC	1
8	P128930	CLAMP-U: 2-1/2"	1



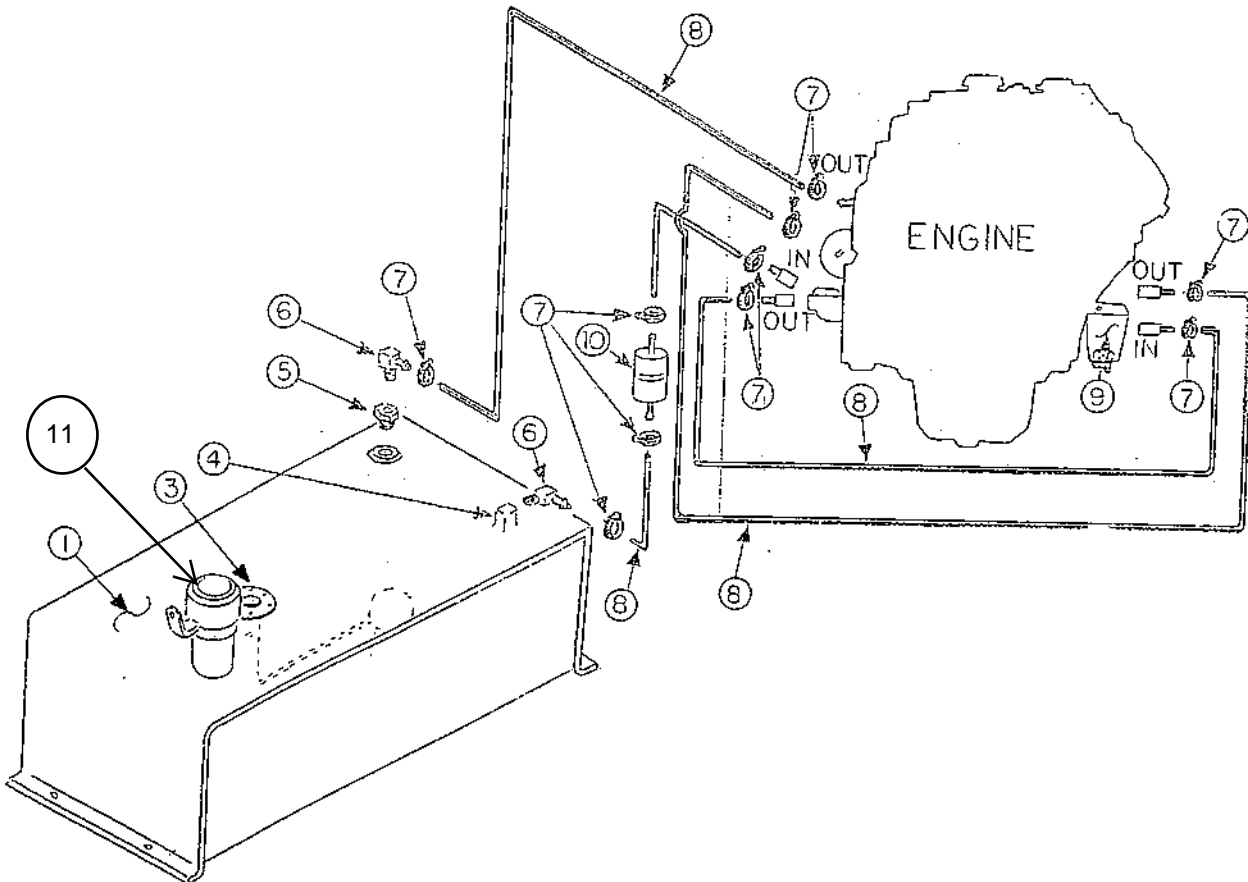
EXHAUST SHIELDING

REF NO.	PART NO.	DESCRIPTION	QTY
1	004957	EXHAUST BRKT BASE	1
2	004958	EXHAUST BRKT TOP	1
3	004959	HEAT SHIELD, FLEX TUBE	1
4	004960	HEAT SHIELD, FLEX TUBE BACK	1
5	004961	HEAT SHIELD, MUFFLER	1
6	004962	HEAT SHIELD, MUFFLER COVER	1



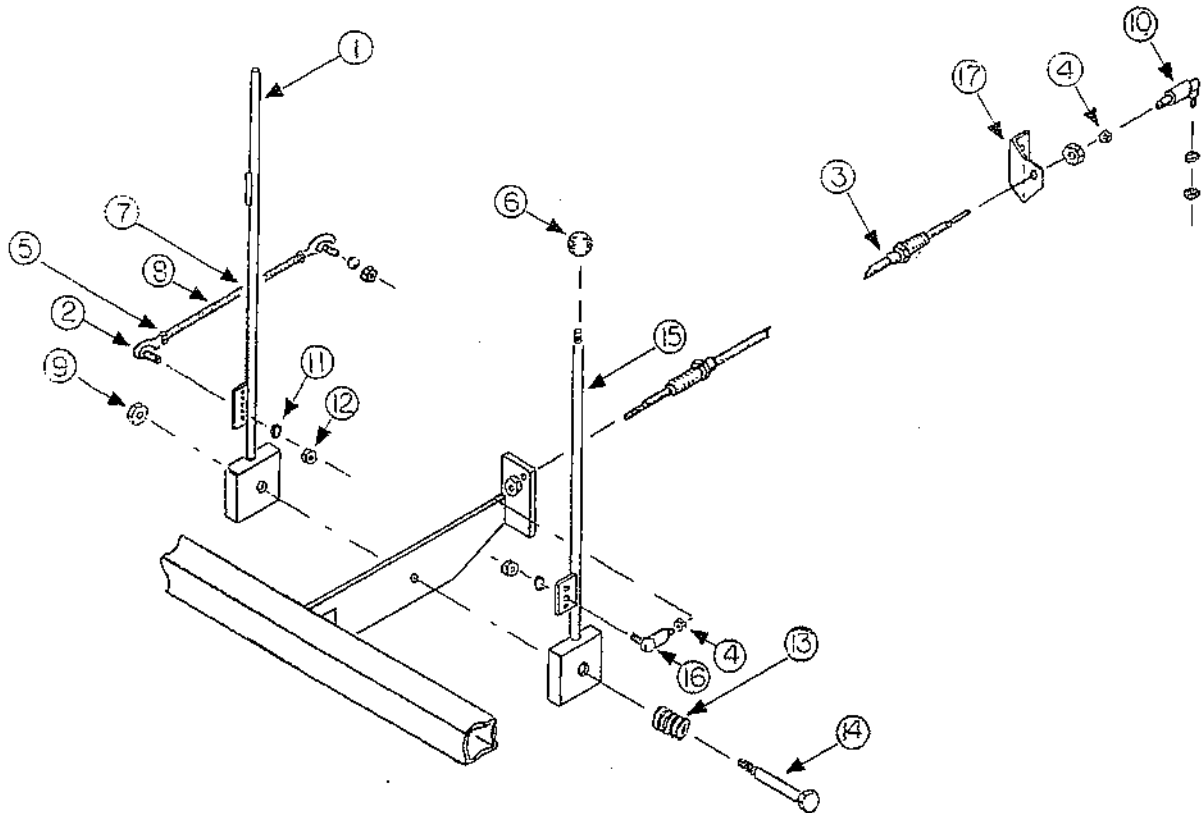
FUEL SYSTEM

REF NO.	PART NO.	DESCRIPTION	QTY
1	005082	TANK , FUEL, ASSY (18 GAL) (INCLUDES: 3 & 4)	1
3 *	002096	SENDER ASSY, FUEL LEVEL UPDATED P/N: 71.500533	1
4	P769000	SIPHON TUBE ASSY	1
5	P267320	FITTING: 6MP 4FP REDUCER	1
6	P267140	FITTING: 4MP 5FP BRASS ADAPTER	2
7	P128702	CLAMP: HOSE, SIZE 02	8
8	R99000703	HOSE: FUEL LINE, 5/16" ID (SPECIFY LENGTH DESIRED)	
9	P371620	FILTER: FUEL 704LT	1
10	P371650	FILTER: FUEL, IN-LINE	1
11	71.P610000	FUEL FILTER	



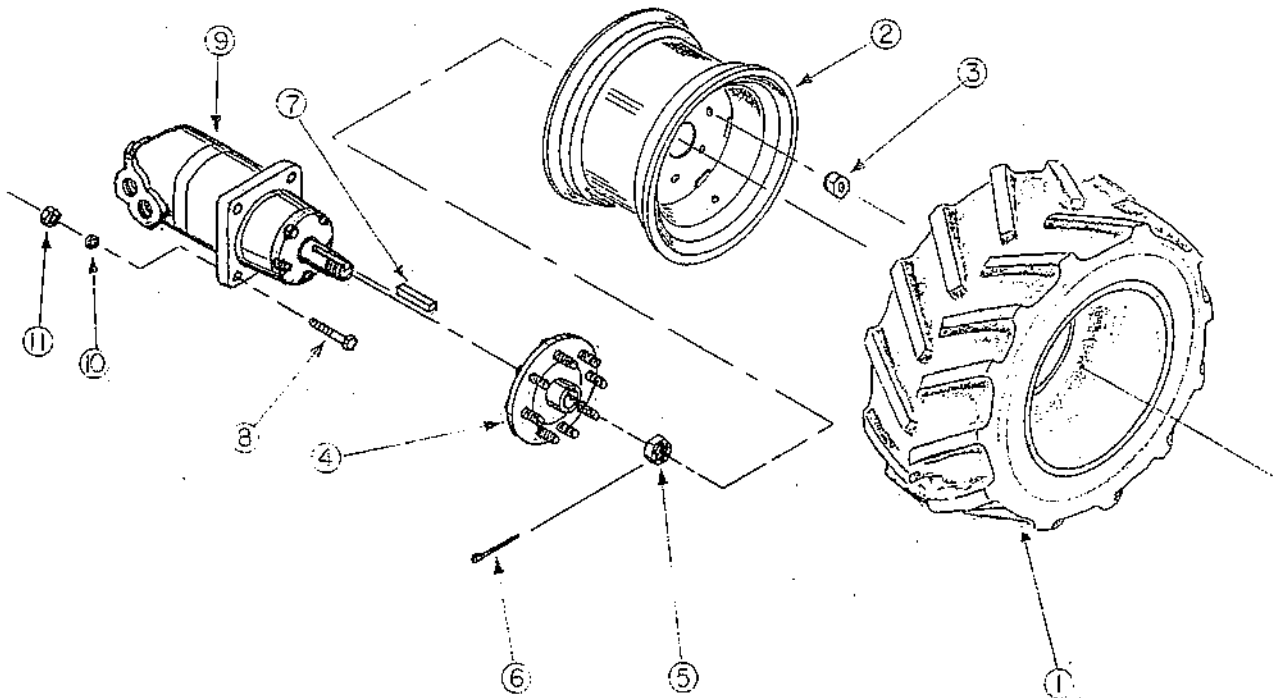
THROTTLE AND TRANSMISSION LINKAGE

REF NO.	PART NO.	DESCRIPTION	QTY
1	004513	LEVER, THROTTLE	1
2	P126300	BALL JOINT: 1/4F 1/4M	2
3	P115852	CABLE: PUSH-PULL 52"	1
4	P158021	NUT: #10-32 PLATED	2
5	P150401	HEX NUT: 1/4" FINE THREAD	2
6	P308100	KNOB: 1-3/8" X 1/2-13	1
7	004569	ROD, THREADED 1/4-28 NF X 17.68	1
8	004568	THROTTLE LINKAGE ROD ASSY (INCLUDES 2, 5, & 7)	1
9	P157500	NUT: 5/8-11 TOP-LOCK	1
10	P126330	BALL JOINT: 10-32F 5/16M	2
11	P851104	WASHER: LOCK 1/4"	2
12	P155251	NUT: 1/4" F.T. TOP-LOCK	2
13	002145	SPRING, CONTROL LEVER	1
14	P101018	BOLT: 5/8-11 NC X 4-1/2" G8	1
15	005263	LEVER, TRANSMISSION	1
17	005262	BRKT, M46 CABLE	1



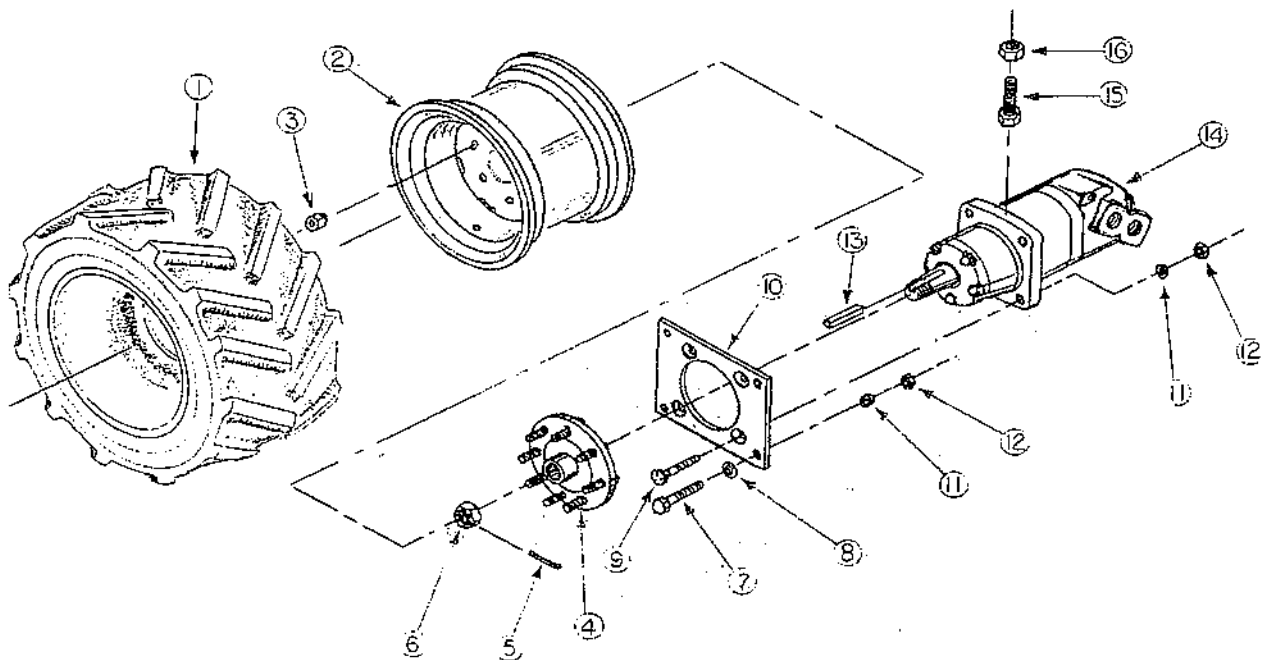
RIGHT WHEEL ASSY

REF NO.	PART NO.	DESCRIPTION	QTY
1	P763800	TIRE: 38 X 14.00	1
2	P750500	RIM: GKN #W229860	1
	004285	WHEEL ASSY LH (INCLUDES 1 & 2)	1
3	P768110	WHEEL NUT: 5/8-18 DORMAN	1
4	P768150	STUD: WHL 5/8-18 X 2"	1
	002255	WHEEL HUB, 6M, 8 STUD (INCLUDES 3 & 4)	
5	P768120	WHEEL MOTOR NUT	1
6	P116212	COTTER PIN: 1/8" X 3"	1
7	000497M	KEY, WHEEL MTR 4M & 6M CONTOURED	1
8	P100808	HEX BOLT: 1/2" X 2"	4
9	P354700	MTR: WHL-6M, C/L 113-1140 (INCLUDES 5 & 7)	1
	P354602	SEAL KIT: WHL MTR, 6M SHAFT	1
	P354601	SEAL KIT: WHL MTR, 6M REAR	1
10	P851108	WASHER: LOCK 1/2"	4
11	P155850	NUT: 1/2" TOP-LOCK	4



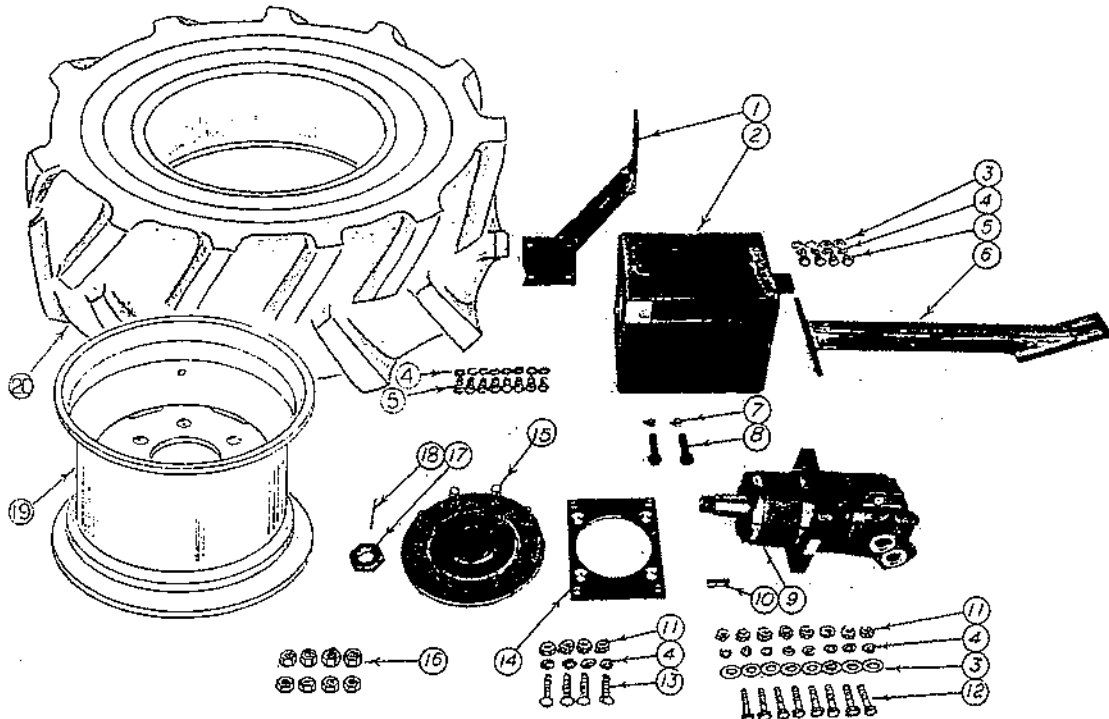
LEFT WHEEL ASSY

REF NO.	PART NO.	DESCRIPTION	QTY
1	P763800	TIRE: 38 X 14.00	1
2	P750500	RIM: GKN #W229860	1
	004284	WHEEL ASSY RH (INCLUDES 1 & 2)	
3	P768110	WHEEL NUT: 5/8-18 DORMAN	8
4	P768150	STUD: WHL 5/8-18 X 2"	8
	002255	WHEEL HUB, 6M, 8 STUD (INCLUDES 3 & 4)	1
5	P116212	COTTER PIN: 1/8" X 3"	1
6	P768120	WHEEL MOTOR NUT	1
7	P100808	HEX BOLT: 1/2" X 2"	4
8	P850108	WASHER: FLAT ZINC 1/2"	4
9	P114808	PLOW BOLT:, 1/2" X 2"	4
10	000463M	PLATE, ADJ. WHEEL MOTOR MT.	1
11	P851108	WASHER: LOCK 1/2"	8
12	P155850	NUT: 1/2" TOP-LOCK	8
13	000497M	KEY, WHEEL MOTOR 4M & 6M CONTOURED	1
14	P354700	MTR: WHL-6M C/L 113-1140 (INCLUDES 6 & 13)	1
	P354601	SEAL KIT: WHL MTR, 6M REAR	1
	P354602	SEAL KIT: WHL MTR, 6M SHAFT	1
15	P099012	HEX BOLT: 5/8" X 3" GR.5 FULL	1
16	P155800	NUT: 5/8-11 HEX JAM	1



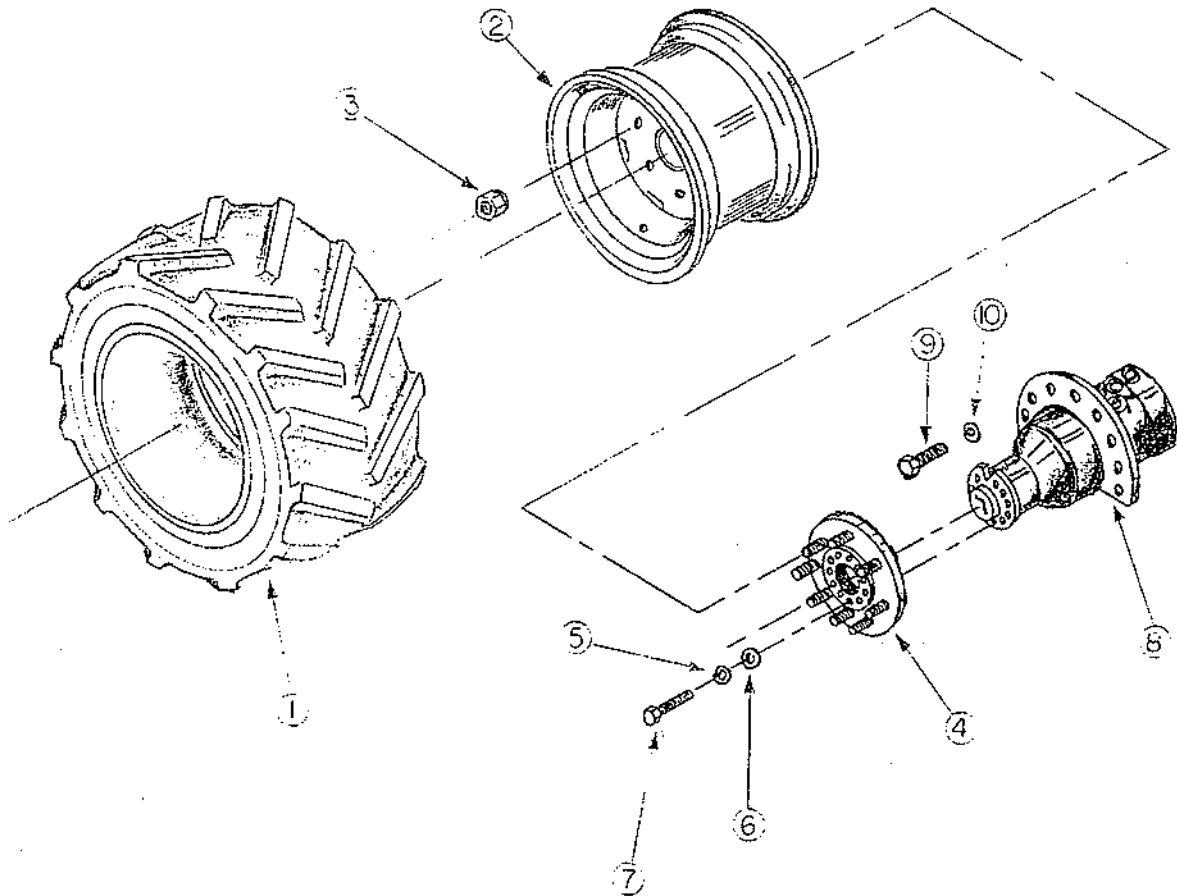
LEFT WHEEL ASSEMBLY (CAB)

REF NO.	PART NO.	DESCRIPTION	QTY
1	002855	BRACE, HORIZ WHEEL EXT	1
2	000506W	EXTENDER, WHEEL MOTOR (FOR CAB)	1
3	P850108	WASHER: FLAT ZINC 1/2"	12
4	P851108	WASHER: LOCK 1/2"	24
5	P100805	HEX BOLT: 1/2" X 1-1/4"	12
6	002854	BRACE, VERT WHEEL EXT	1
7	P155800	NUT: 5/8-11 HEX JAM	2
8	P099012	HEX BOLT: 5/8" X 3" GR.5 FULL	2
9	P354700	MTR: WHL-6M, C/L 113-1140 (INCLUDES 10 & 17)	1
10	000497M	KEY, WHEEL MOTOR 4M & 6M CONTOURED	1
11	P155850	NUT: 1/2" TOP-LOCK	12
12	P100808	HEX BOLT: 1/2" X 2"	8
13	P114808	PLOW BOLT: 1/2" X 2"	4
14	000463M	PLATE, SLIDING, ADJ. WHEEL MTR MT.	1
15	P768150	STUD: WHL 5/8-18 X 2"	8
16	P768110 002255	WHEEL NUT: 5/8-18 DORMAN WHEEL HUB, 6M, 8 STUD (INCLUDES 15 & 16)	8
17	000020M	NUT, X-TRA SLOTTED WHL MTR	1
18	P116212	COTTER PIN: 1/8" X 3"	1
19	P750500	RIM: GKN #W229860	1
20	P763800 004284	TIRE: 38 X 14.00 WHEEL ASSY RH (INCLUDES 19 & 20)	1



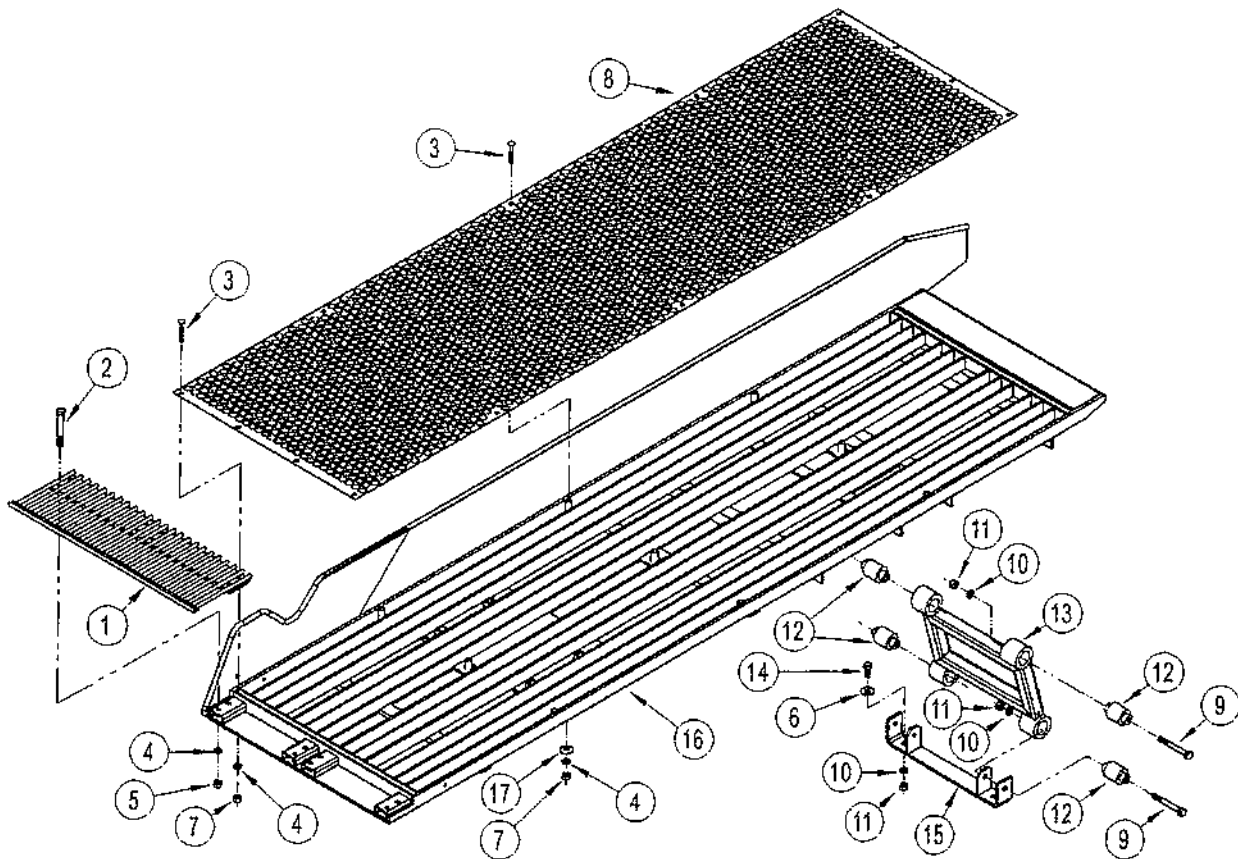
FRONT WHEEL ASSEMBLY

REF NO.	PART NO.	DESCRIPTION	QTY
1	P763800	TIRE: 38 X 14.00	1
2	P750500 004284	RIM: GKN #W229860 WHEEL ASSY RH (INCLUDES 1 & 2)	1
3	P768110	WHEEL NUT: 5/8-18 DORMAN	8
4	P768150 002957	STUD, WHL 5/8-18 X 2" WHEEL HUB, POCLAIN (INCLUDES 3 & 4)	8
5	P851102	WASHER: LOCK M14	11
6	P852004	WASHER: FLAT M14	11
7	P103870	METRIC BOLT: M14-2.0 X 50 MM	11
8	P355100	MTR: WHL-POCLAIN	1
9	P101007	BOLT: 5/8-11 NC X 1-3/4"	10
10	P851110	WASHER: LOCK, 5/8"	10



SCREEN SYSTEM

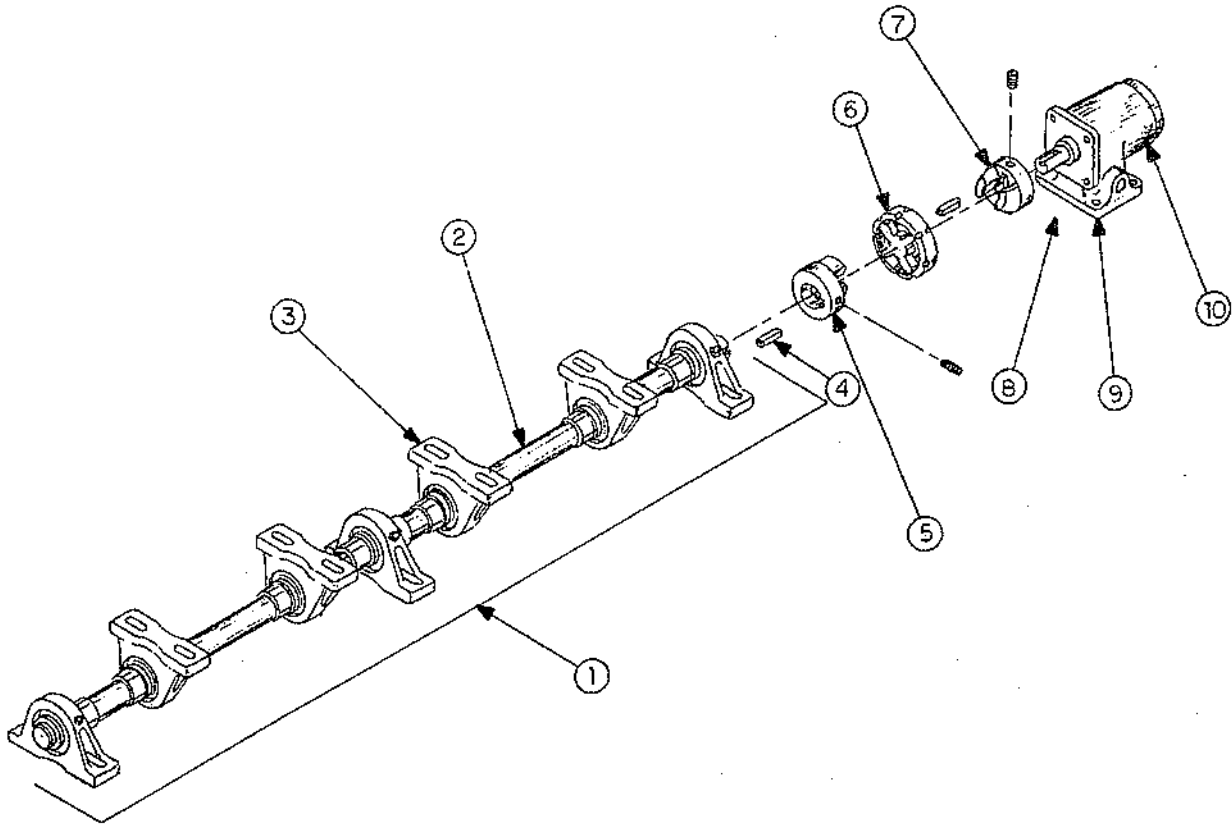
REF NO.	PART NO.	DESCRIPTION	QTY
		*OPTIONAL SOLID DIGGER POINT P/N 71.000330W QTY 2 REQD	
1*	000304W	DIGGER POINT WELD, STANDARD	2
2	P100609	BOLT: 3/8-16 NC X 2-1/4"	16
3	P114610	PLOW BOLT: 3/8-16 X 2-1/2"	28
4	P851106	WASHER: LOCK 3/8"	44
5	P155450	NUT: 3/8" TOP-LOCK	16
6	P850108	WASHER: FLAT ZINC 1/2"	4
7	P150601	HEX NUT: 3/8" GR.8 PLATED	28
8A	005232	SCREEN WLD, 3/4" WOVEN (STANDARD)	2
8B	005234	SCREENWLD, 5/8" WOVEN (OPTIONAL)	2
9	P100816	BOLT: 1/2-13 NC X 4"	8
10	P851108	WASHER: LOCK 1/2"	12
11	P155850	NUT: 1/2" TOP-LOCK	12
12	P126820	BUSHING: RUBBER	8
13	002051	RISER, REAR SCREEN	2
14	P100805	HEX BOLT: 1/2" X 1-1/4"	4
15	005202	BRKT: LOWER SCREEN RISER	2
16A	004374	SCREEN FRAME, RIGHT	1
16B	004375	SCREEN FRAME, LEFT	1
17	P850106	WASHER: FLAT ZINC 3/8"	20



OSCILLATOR MECHANISM

REF NO.	PART NO.	DESCRIPTION	QTY
1	002065A	SHAFT ASSEMBLY, OSCILLATOR (INCLUDES 2 & 3)	1
2	002065SA	SHAFT ASSY, OSC SUB	1
3	000691M	BEARING, OSC, 2" SEALMASTER	7
4	000067M	KEY, OSCILLATOR COUPLING	1
5*	P272960	COUPLING HALF: 1-1/2" BORE FLEX (INCLUDES:)	1
	P108554	SET SCREW: 7/16-14 X 1/2"	1
6*	P272990	CPLG INSERT: 90 DURO SPIDER	1
7*	P272930	COUPLING HALF: 1" BORE FLEX (INCLUDES:)	1
	P108557	SET SCREW: 7/16-14 X 3/4"	1
8	003457	MOTOR ASSY, OSC (1017) (INCLUDES: 9 & 10)	1
9	P356000	BASE BLOCK: C/L 123-1008	1
10	P351100	MTR: C/L #101-1017 (INCLUDES:)	1
	P307300	KEY: WOODRUFF 1/4 X 1 NO. 15	1

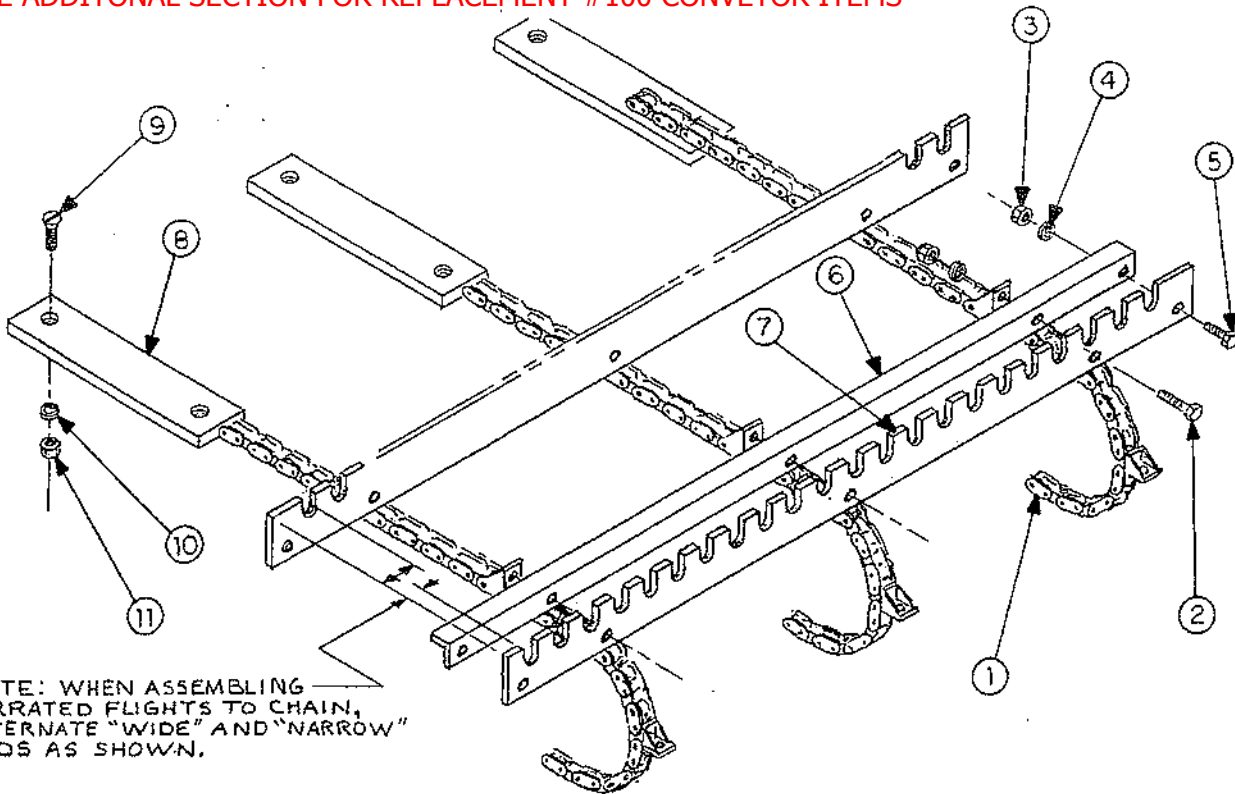
* 71.P272900 COMPLETE COUPLER ASSEMBLY (INCLUDES #5, #6, #7 AND SET SCREWS)



FLIGHT SYSTEM

REF NO.	PART NO.	DESCRIPTION	QTY
1	P632800	CHAIN: #620 CONV 26CLT**SEE NOTE BELOW (REPAIR PARTS:)	3
	P630403	OFFSET LINK: #620	
	004584	CHAIN LINK, ATTACHMENT ASSY 5000 (INCLUDES:)	
	P630400	CONNECTING LINK: #620 ATTACH	1
	P630401	CONNECTING LINK: #620	2
2	P100605	BOLT: 3/8-16 NC X 1-1/4"	78
3	P155450	NUT: 3/8" TOP-LOCK	130
4	P851106	WASHER: LOCK 3/8"	130
5	P100604	BOLT: 3/8-16 NC X 1"	52
6	000053M	FLIGHT MOUNTING ANGLE	26
7	000052M	FLIGHT BLADE: 2-1/4"	26
8	000271M	WEAR STRIP: CONVEYOR	6
9	P103810	BOLT: FLAT HEAD 5/16" X 1"	12
10	P851105	WASHER: LOCK 5/16"	12
11	P150500	HEX NUT: 5/16" PLATED	12

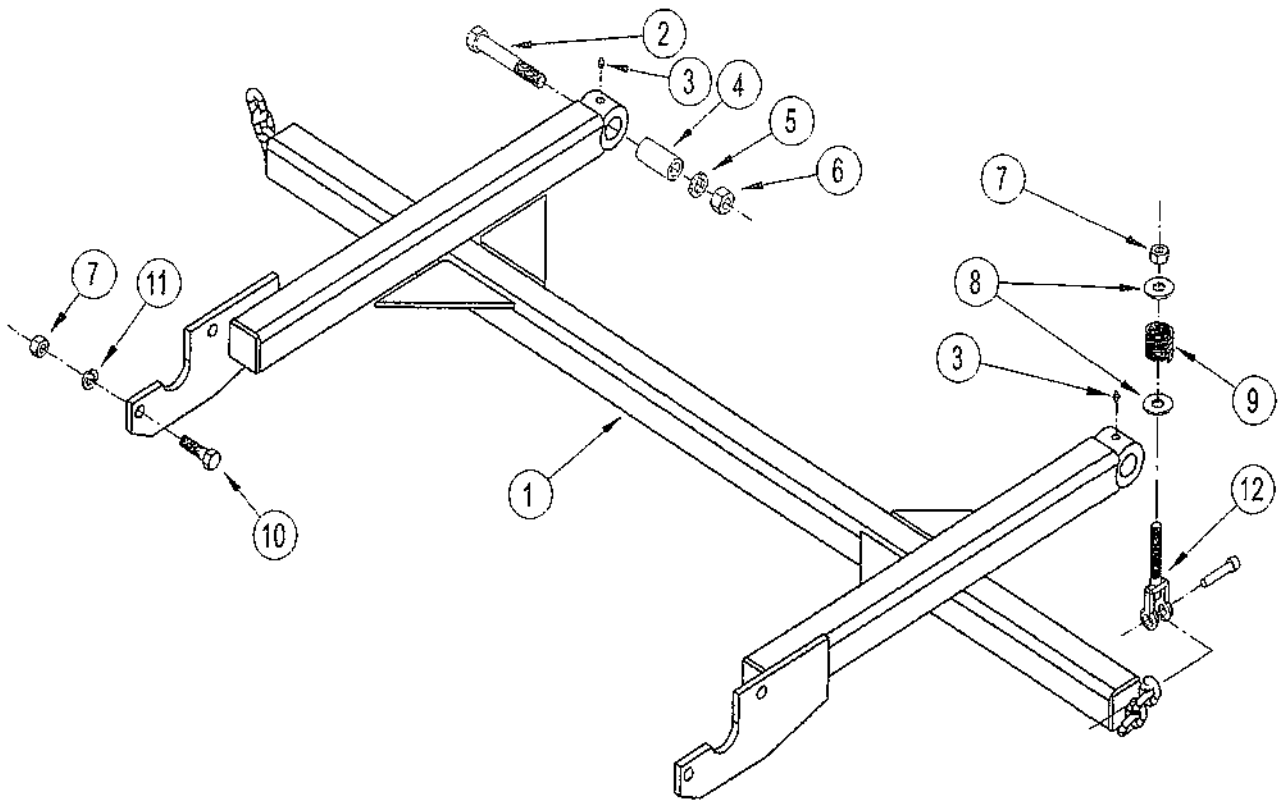
***NOTE CONVEYOR CHAINS / FLIGHTS / SHAFTS MAY HAVE BEEN CONVERTED TO #100 STYLE
 CONVERTED UNITS WILL HAVE QTY 2 CONVEYOR CHAINS
 SEE ADDITIONAL SECTION FOR REPLACEMENT #100 CONVEYOR ITEMS**



****REPLACE CHAIN WITH UPDATED P/N 71.P632820**

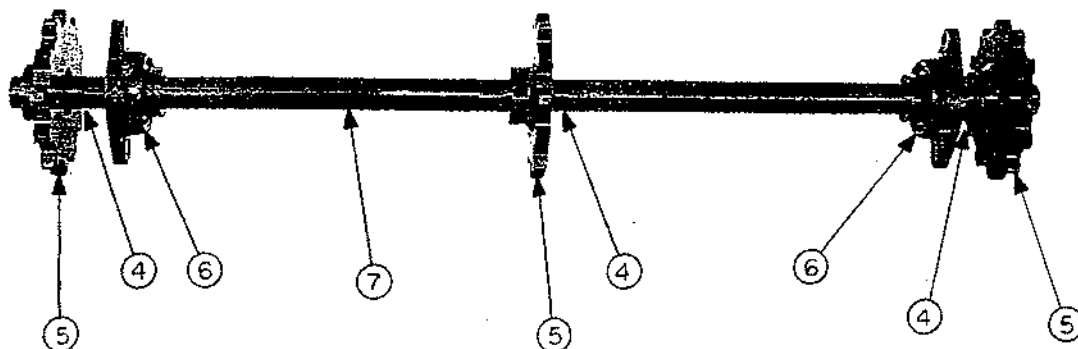
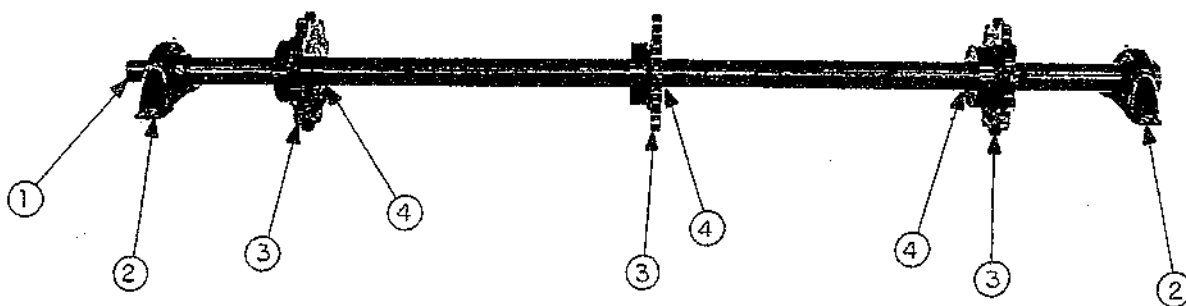
CONVEYOR SUPPORT ASSEMBLY

REF NO.	PART NO.	DESCRIPTION	QTY
1	005249	CONVEYOR SUPPORT	1
2	P101016	BOLT: 5/8-11 NC X 4" GRD 8	2
3	P620200	GREASE FITTING: 1/4" STRAIGHT	2
4	000026M	SPACER, STABILIZER (2-1/16")	2
5	P851110	WASHER: LOCK 5/8"	2
6	P157500	NUT: 5/8-11 TOP-LOCK	2
7	P155850	NUT: 1/2" TOP-LOCK	6
8	P850108	WASHER: FLAT ZINC 1/2"	4
9	002122	SPRING, FRONT CONVEYOR SUPPORT	2
10	P100807	HEX BOLT: 1/2" X 1-3/4"	4
11	P851108	WASHER: LOCK 1/2"	4
12	P135190	JAW END: 1/2"-13 X 9"	2



CONVEYOR SHAFT ASSEMBLY: FRONT & REAR

REF NO.	PART NO.	DESCRIPTION	QTY
1	000454M	SHAFT, REAR CONVEYOR (1-3/4")	1
2	P015100	BEARING: FAF 1-7/16" PB	2
3	000324W	SPROCKET, 620 12T 1-3/4" B	3
4	000328M	KEY, CONVEYOR SHAFT	3
	000454A	SHAFT, ASSY, REAR CONVEYOR (INCLUDES: 1 THRU 4)	1
5	000257W	SPROCKET, 620 12T 1-7/16" B	3
6	P015110	BEARING: FAF TCJT 1-7/16"	2
7	000272M	SHAFT, FRONT CONVEYOR	1
	000272A	SHAFT ASSY, FRONT CONVEYOR (INCLUDES: 4 THRU 7)	1



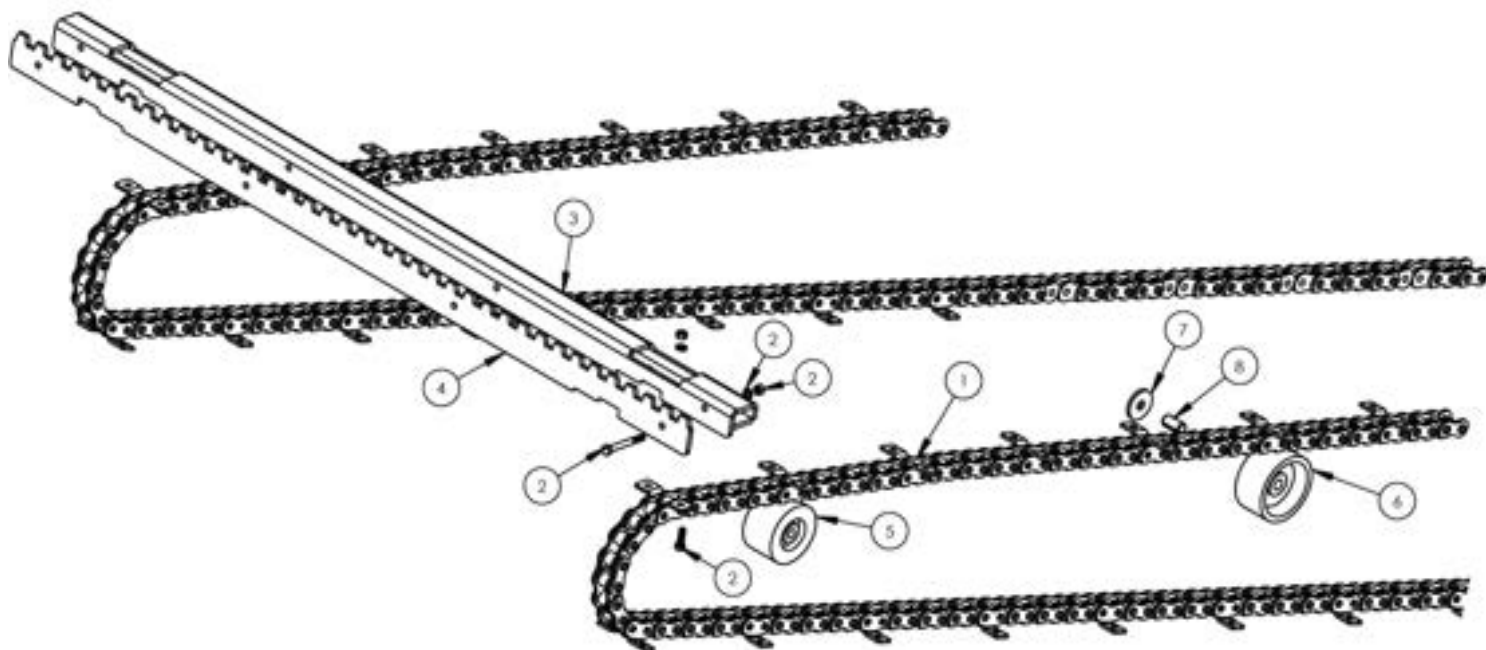
*NOTE CONVEYOR CHAINS / FLIGHTS / SHAFTS MAY HAVE BEEN CONVERTED TO #100 STYLE
 CONVERTED UNITS WILL HAVE QTY 2 CONVEYOR CHAINS
 SEE ADDITIONAL SECTION FOR REPLACEMENT #100 CONVEYOR ITEMS

#100 CONVEYOR CHAIN

FLIGHT SYSTEM

<u>REF. NO.</u>	<u>PART NO.</u>	<u>DESCRIPTION</u>	<u>QTY</u>
1	P632110	CHAIN: #100 CONV 25 CLT**SEE NOTE BELOW	2
<u>Repair Parts for Ref. No. 1</u>			
	P630101	CHAIN LINK: #100 OFFSET	
	P630100	CHAIN LINK: #100 CONNECTOR	
2	500295	KIT: FLIGHT MOUNTING	1
<u>Kit Parts:</u>			
	P100504	BOLT: 5/16"-18 NC X 1"	100
	P100511	BOLT: 5/16"-18 NC X 2-3/4"	100
	P851105	WASHER: LOCK 5/16"	200
	P155350	NUT: TOP-LOCK 5/16"	200
3	500283	FLIGHT BACK UP MT	25
4	500279	FLIGHT BLADE 5000-100	25
5	P761100	SNUGULATOR: 2500BD1X (FRONT)	4
6	P761300	URETHANE ROLLER (REAR)	2
7	M5009-5	WASHER (REAR)	2
8	500325	IDLER SLEEVE (REAR)	2

****REPLACE CHAIN WITH UPDATED P/N 71.P632144**



CHAIN REPAIR ITEMS:

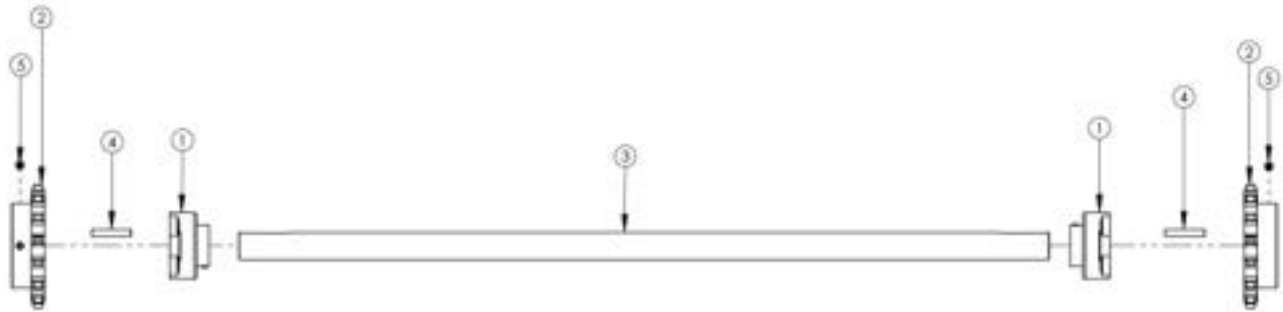
- 71.P632143 #100 K1 ATTACHMENT LINK
- 71.P632142 MASTER CONNECTING LINK
- 71.P632141 1/2 LINK (OFFSET)



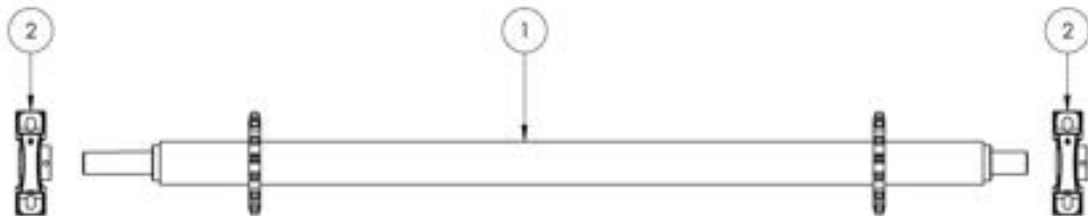
#100 CONVEYOR CHAIN

CONVEYOR SHAFT ASSEMBLY: FRONT & REAR

ITEM NO.	QTY.	PART NO.	DESCRIPTION
1	2	P015110	BEARING: 1-7/16 2 BOLT FLANGE
2	2	P691015	SPROCKET: H100B15 X 1.438" B KW/2S
3	1	500285	SHAFT: CONV FRONT
4	2	000534M	KEY: 3/8 X 2-1/8
5	4	P108606	SET SCREW, 3/8-16 X 3/8
*	1	500284	COMPLETE SHAFT ASSEMBLY CONTAINS ITEMS #1-#5

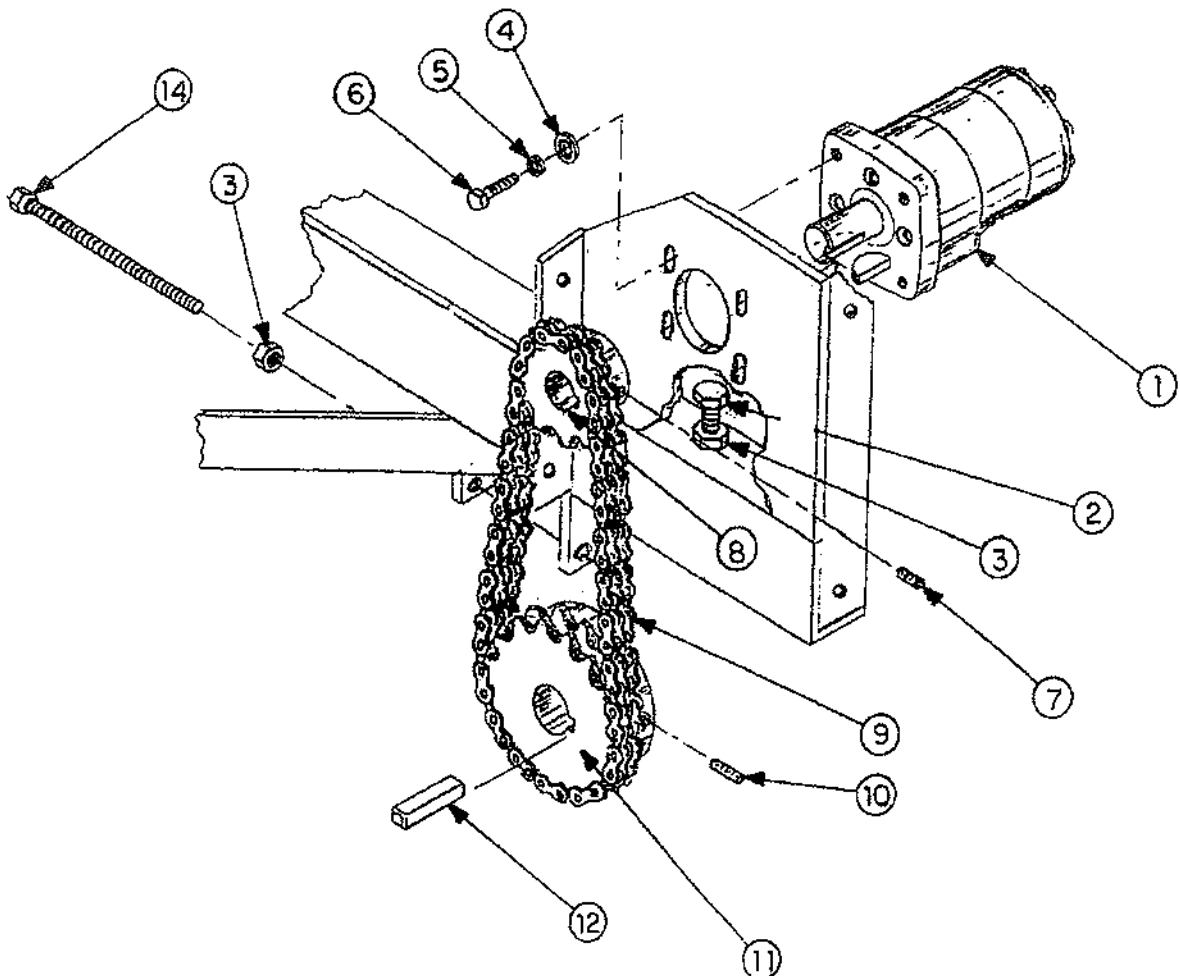


REF NO.	PART NO.	DESCRIPTION	QTY
1	500280	WLD: SHAFT REAR CONV 5000-100	1
2	500169	BEARING: 1-7/16" PB SPOT FACED	2



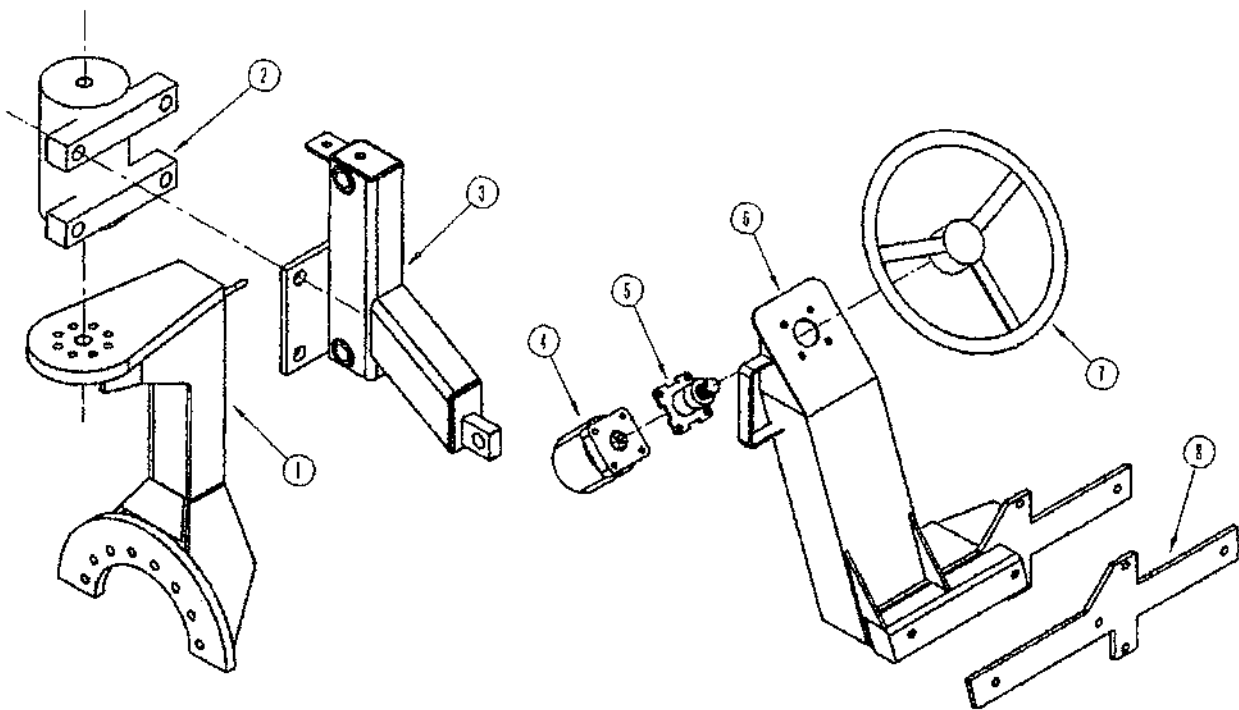
CONVEYOR DRIVE MECHANISM

REF NO.	PART NO.	DESCRIPTION	QTY
1	P352400	MOTOR, C/L 101-1751 7.3 CID (INCLUDES:)	1
	P307300	KEY: WOODRUFF 1/4" X 1 NO. 15	1
2	P100808	HEX BOLT: 1/2" X 2"	1
3	P150800	HEX NUT 1/2" PLATED	3
4	P850106	WASHER: FLAT ZINC 3/8"	4
5	P851106	WASHER: LOCK 3/8"	4
6	P100604	BOLT: 3/8-16 NC X 1"	4
7	P108606	SET SCREW: 3/8" NC X 3/8"	1
8	P652101	SPROCKET: D50B13HT 1" BORE	1
9	002175	CHAIN, #50 DOUBLE (INCLUDES:)	1
	P630203	CONNECTING LINK : #50-2	1
10	P108612	SET SCREW: 3/8-16 NC X 3/4"	1
11	P652230	SPROCKET: D50B23HT 1-7/16" BORE	1
12	000534M	KEY, CONVEYOR SPROCKET - DRIVEN	1
14	000374W	BOLT, REAR SHAFT ADJUSTMENT	2



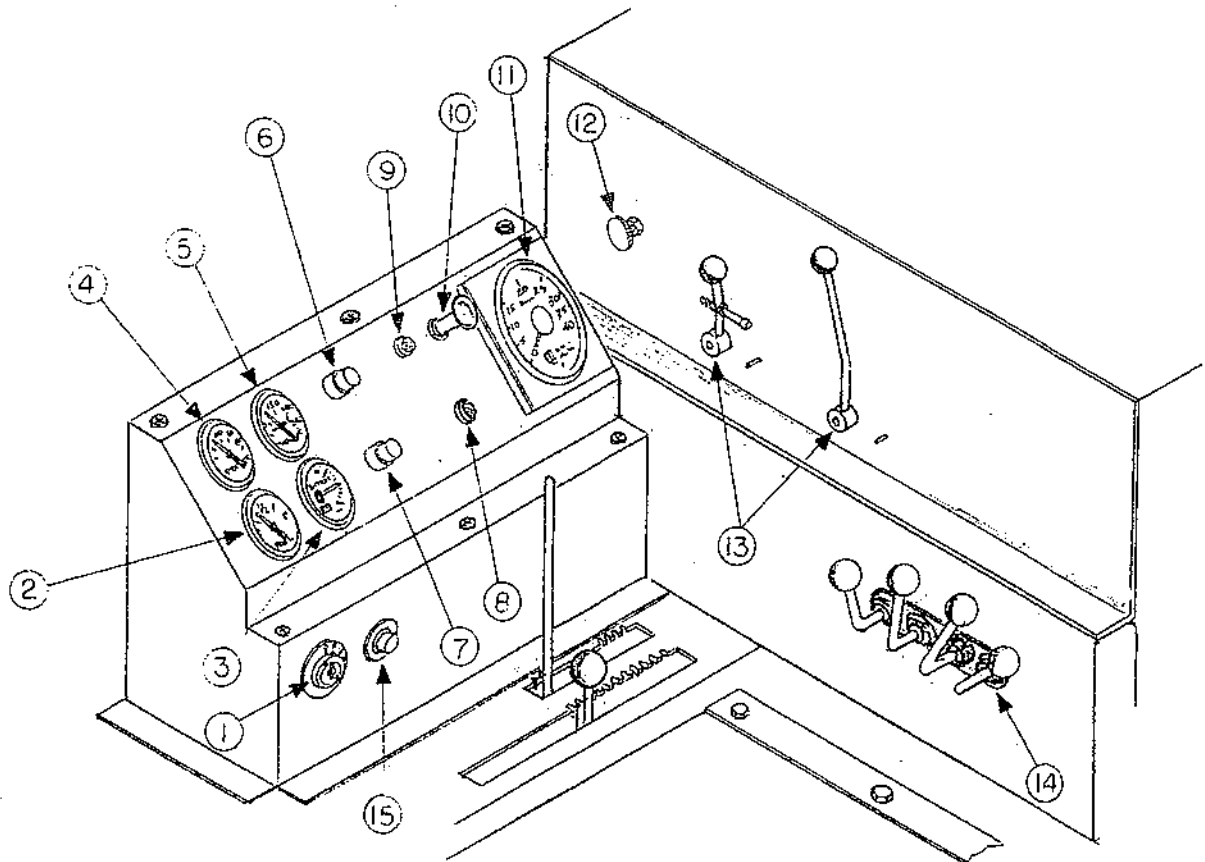
POWER STEERING COMPONENTS

REF NO.	PART NO.	DESCRIPTION	QTY
1	005243	FORK: MS05/HELAC	1
2	P352500	ACTUATOR: HELAC STEERING L20-15E	1
3	005247	BRKT: HELAC MOUNT	1
4	P352200	MOTOR: PS, C/L 213-4002	1
5	P768510	STEERING COLUMN: C/L 204-1002	1
6	003556	STEERING POST WELDMNT	1
7	P768500	STEERING WHEEL	1
8	000684W	STEERING POST RETAINER	1



CONTROLS AND GAUGES

REF NO.	PART NO.	DESCRIPTION	QTY
1	P298140	SWITCH: IGN CH#9578	1
2	P297120	GAUGE: FUEL TANK	1
3	P297280	GAUGE: VOLTMETER	1
4	P297210	GAUGE: OIL PRESSURE	1
5	P297290	GAUGE: WATER TEMP	1
6	002444	FUSEHOLDER, RING/SPADE	1
7	002443	FUSEHOLDER, RING/BUTT	1
8	P312400	LIGHT: INDICATOR RED	1
9	P312300	LIGHT: INDICATOR GREEN	1
10	P298145	SWITCH: LIGHT	1
11	P297270	GAUGE: TACH/HM	1
12	P294300	VALVE: NEEDLE NVG	1
13	002291	VALVE, FLOW CONTROL	2
14	005149	VALVE BANK ASSY, HUSCO	1
15	P298170	SWITCH: START, PUSH BUTTON	1



HOPPER AND ROLLOVER COMPONENTS

REF NO.	PART NO.	DESCRIPTION	QTY
1	005278	HOPPER WELDMENT, HD	1
2	005280	BOOM WELDMENT CLEVIS TYPE	1
3	000124W	HOOD WELDMENT	1
4	005283	ROLLOVER CHAIN GUARD	1
5	005271	SPUD, HOPPER RIGHT	1
6	005272	SPUD, HOPPER LEFT	1
7	003032	CRANK, HOPPER	1
8	000267W	SPROCKET, HOPPER-DRIVEN 16T	1
9	005095	CHAIN, HOPPER ROLLOVER (INCLUDES ITEM 10)	2
10	000284P	CHAIN LINK, #80 CONNECTOR	4
11	P259330	CYLINDER, 2B X 8S W/CAV	1
	P294250	VALVE, PILOT CHECK CARTRIDGE	
	P259306	SEAL KIT, RKT2-0096	
12	000243W	BOOM SWIVEL WELDMENT, LH	1
13	000292M	BOOM SWIVEL, RH	1
14	000358M	STOP, RUBBER	2
15	000268A	TURN BUCKLE ASSEMBLY	2
16	00274M	COLLAR, RETAINING, HOPPER CRANK	1
17	P104806	CARRIAGE BOLT, 1/2-13 X 1-1/2"	12
18	P122608	3/8" X 2" ROLL PIN	1
19	P852020	WASHER, FENDER 1/2"	2
20	000550W	PIN, ROLLOVER CYLINDER	1
21	000366M	PIN, CLEVIS (5/8 BOLT)	2
22	P120850	PIN, CLEVIS 1"	1
23	P118010	CLIP, CLEVIS PIN	2
24	P620200	GREASE FITTING: 1/4" STRAIGHT	4
25	000069M	KEY, HOPPER SPROCKET	1
26	P108604	SET SCREW, 3/8-16 NC X 1/4"	1
27	P850104	WASHER, FLAT, 1/4"	20
28	P851104	WASHER, LOCK, 1/4"	20
29	P851106	WASHER, LOCK, 3/8"	2
30	P851108	WASHER, LOCK, 1/2"	14
31	P851108	WASHER, LOCK, 5/8"	2
32	P155450	NUT, TOP LOCK, 3/8"	2
33	P155850	NUT, TOP LOCK, 1/2"	14
34	P157500	NUT, TOP LOCK, 5/8"	2
35	P100403	BOLT, HEX, 1/4-20 NC X 3/4"	20
36	P100812	BOLT HEX 1/2-13NC X 3"	2
37	P100805	BOLT, HEX, 1/2-13 X 1-1/4"	2

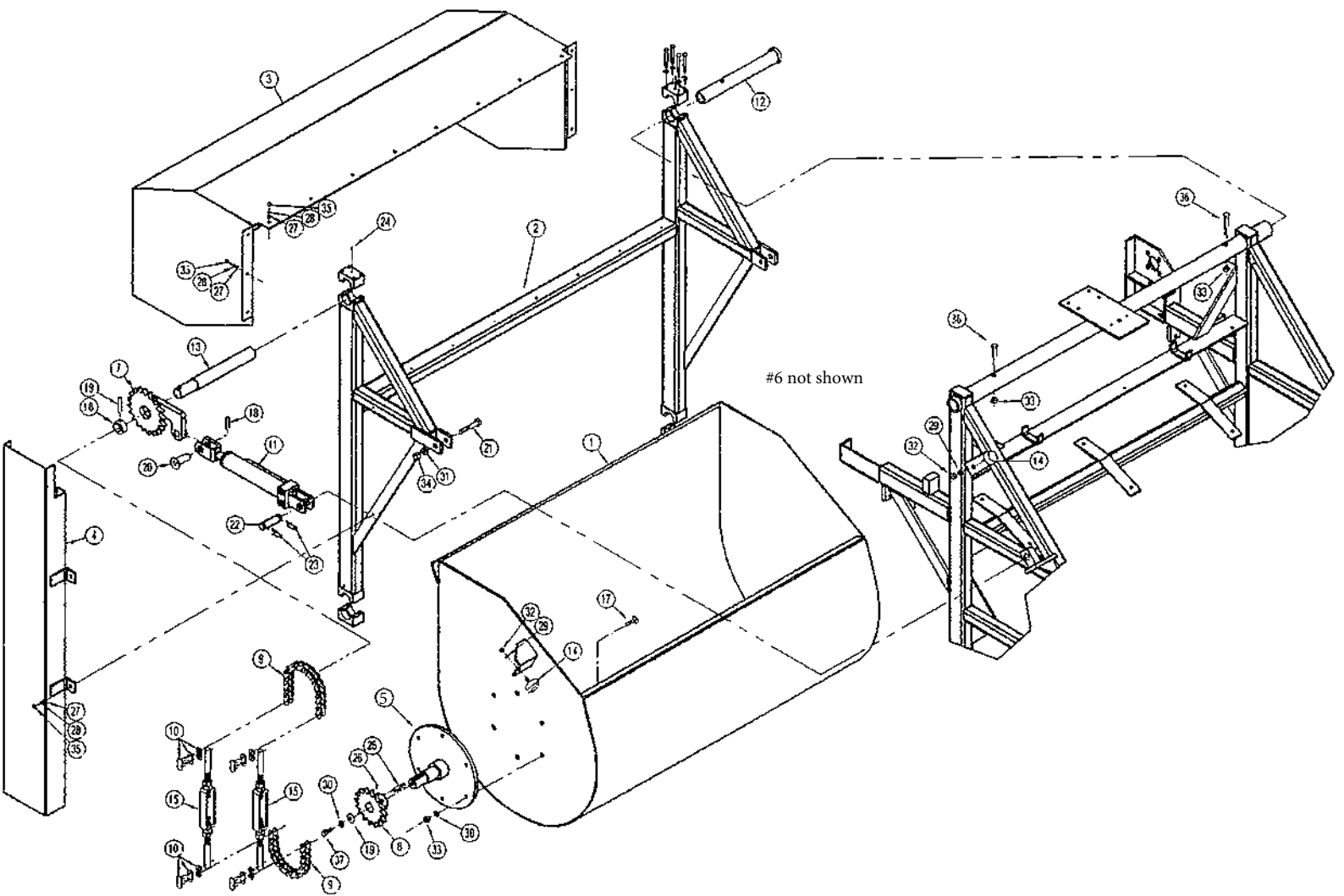
*NOT SHOWN:

71.P259315 CYLINDER: BOOM LIFT / LOWER 5/8" PIN BOSS

71.P259316 SEAL KIT

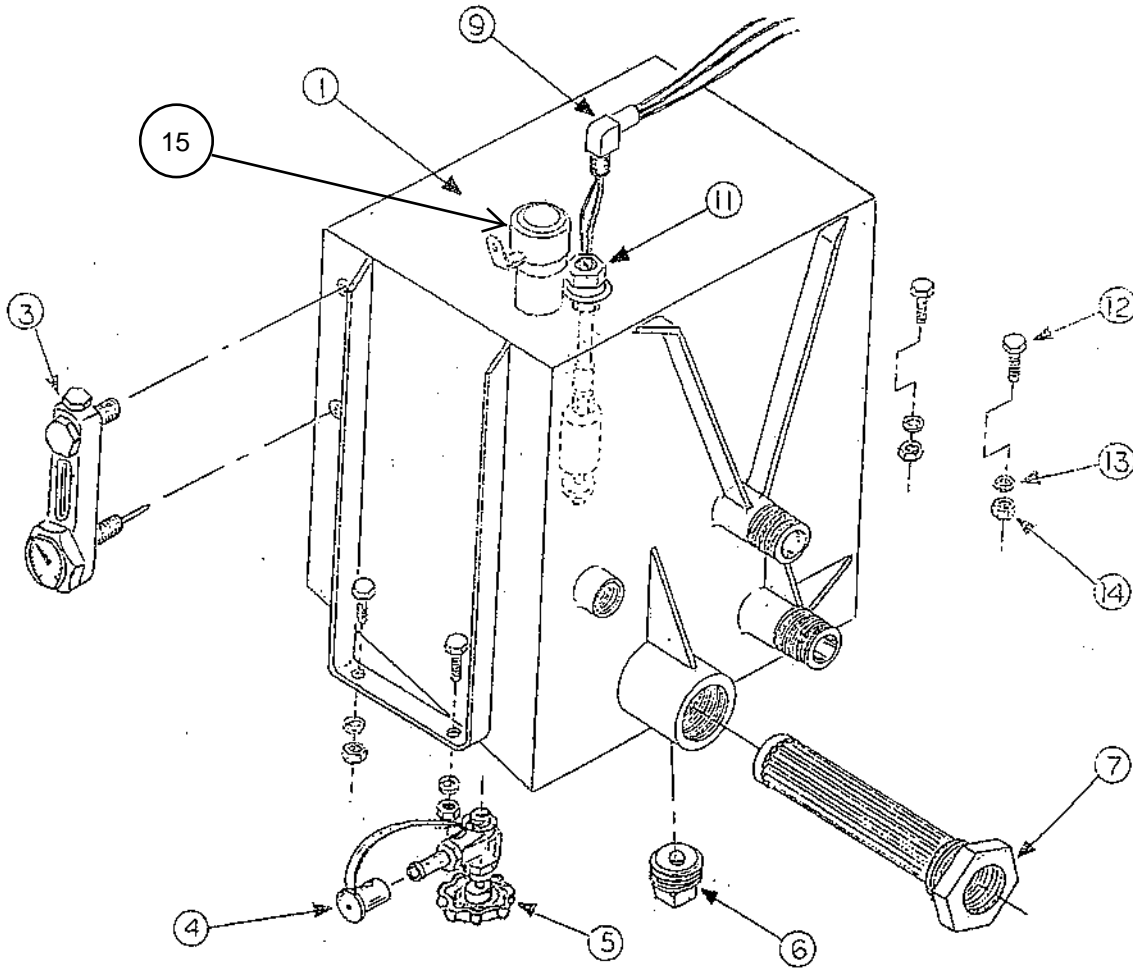
71.P294250 VALVE: LOAD CHECK

HOPPER AND ROLLOVER COMPONENTS



OIL TANK ASSEMBLY

REF NO.	PART NO.	DESCRIPTION	QTY
1	005086	TANK, HYD ASSY, 5000 (INCLUDES: 6, 7, 9, & 11)	1
3	P297220	GAUGE: OIL SIGHT	1
4	P115920	CAP: DUST, OIL TANK DRAIN	1
5	P294010	VALVE: OIL TANK DRAIN	1
6	P270360	PLUG: MAGNETIC DRAIN 1-1/2"	1
7	P780100	STRAINER: HYD OIL	1
9	P266020	ELBOW: BRASS 3/8" NPT X 5/8"	1
11	005092	SENDER ASSY, HYD LEVEL/TEMP	1
12	P100605	BOLT: 3/8-16 NC X 1-1/4"	4
13	P851106	WASHER: LOCK 3/8"	4
14	P155450	NUT: 3/8" TOP-LOCK	4
15	71.P610000	FILL CAP	



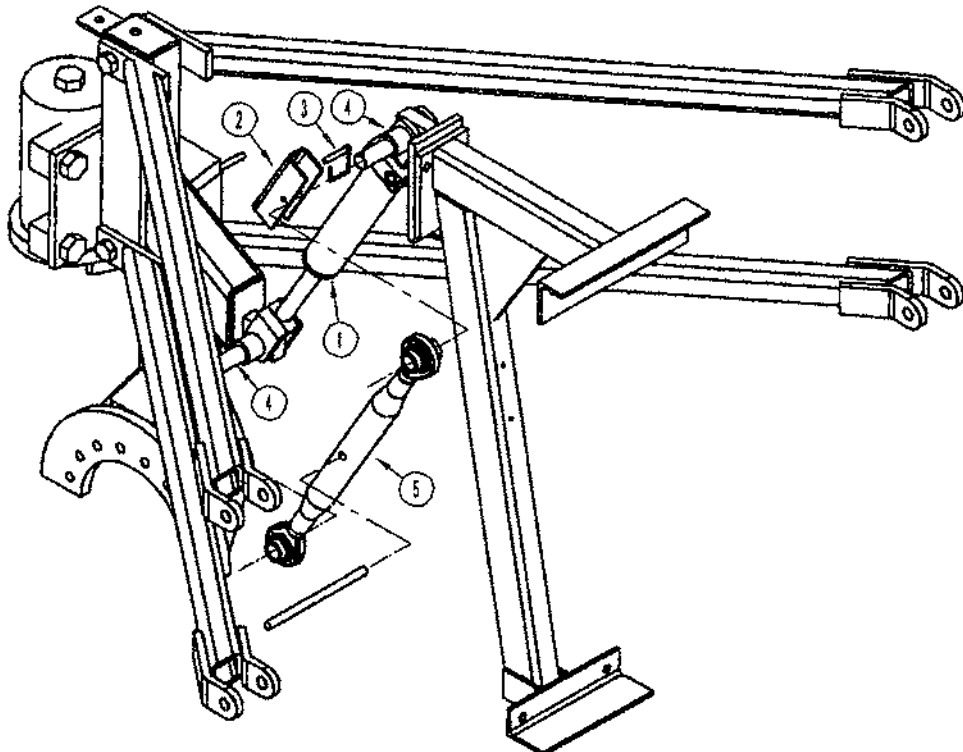
EMERGENCY TOW JACK

INSTRUCTIONS: IN CASE OF POWER OR DIGGER CYLINDER FAILURE, USE THE SCREW JACK (LOCATED IN TUBE BELOW OPERATORS PLATFORM) TO RAISE DIGGER POINTS TO ALLOW FOR TOWING.

FOLLOW THESE STEPS:

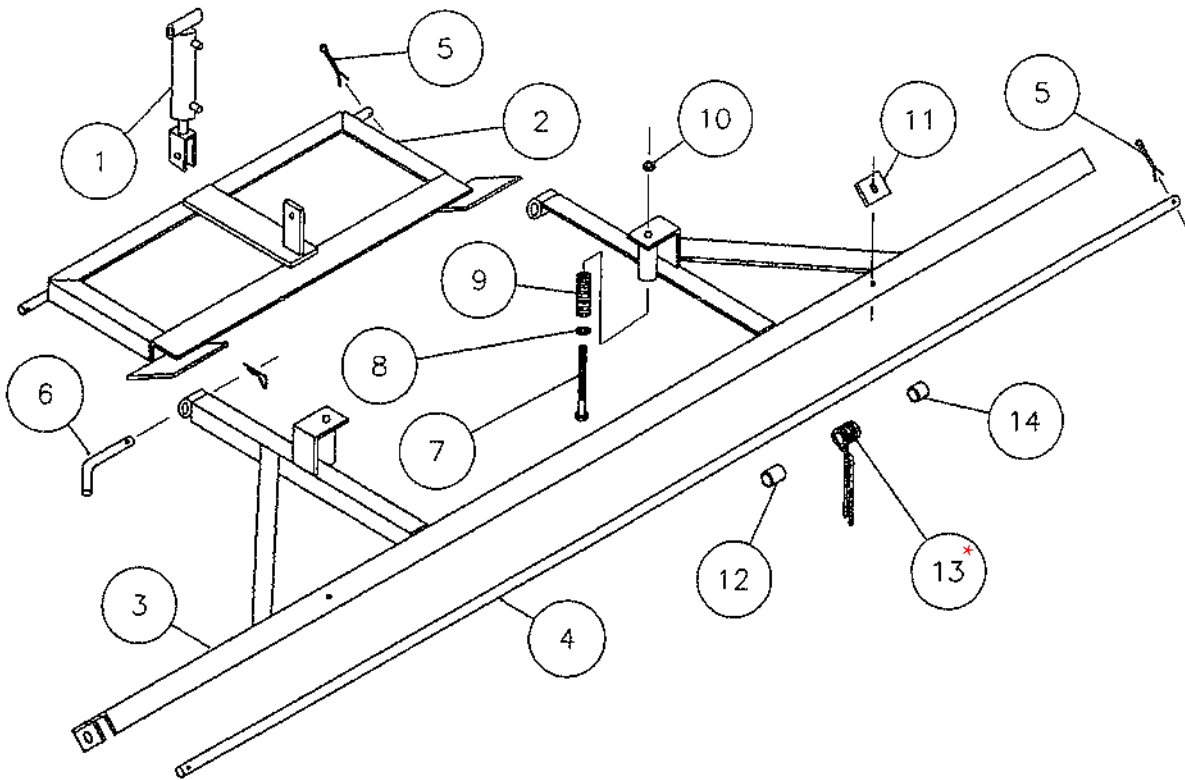
1. REMOVE SCREW HOLDING END CAP ONTO TUBE. AFTER REMOVING CAP, REMOVE THE SCREW JACK AND JACK HANDLE FROM INSIDE THE TUBE.
2. ATTACH SCREW JACK ONTO PINS ATTACHING DIGGER CLINDER TO MACHINE.
3. USE THE SUPPLIED JACK HANDLE TO TURN JACK, WHILE PERIODICALLY RELEASING LINE PRESSURE BY OPERATING 'DIGGER' VALVE HANDLE.
4. FOR ADDED SAFETY, INSTALL SAFETY STOP AND STROKE CONTROL SET ON THE DIGGER CYLINDER.

REF NO.	PART NO.	DESCRIPTION	QTY
1	P259305	CYLINDER, 2B X 10S w/CAV	1
2	003076	STOP, DIGGER CYLINDER, SAFETY	1
3	P123005	LOCK PIN: 5/16"	1
4	005248	PIN: CYL/JACK	2
5	P301400	JACK: SCREW TL174	1



GROOMER ASSY

REF NO.	PART NO.	DESCRIPTION	QTY
1	P259150	CYLINDER, GROOMER	1
	P259151	SEAL KIT: RKT 1.5-0047	1
2	004864	LIFT BRKT, GROOMER	1
3	004862	GROOMER BAR	1
4	004229	PIPE, SPRING MOUNT	1
5	P116308	COTTER PIN: 3/16" X 2"	4
6	P121200	BENT HITCH PIN: 3/4" X 3-1/2"	2
7	P100822	BOLT: 1/2-13 X 5-1/2"	2
8	P850108	WASHER: FLAT ZINC 1/2"	2
9	P605700	SPRING: DIE 5"	2
10	P155850	NUT: 1/2" TOP-LOCK	2
11	004883	WEAR PAD, GROOMER	2
12	004262	SPACER, GROOMER 1"	33
13*	004243	SPRING	36
14	004263	SPACER, GROOMER 3/4"	2



*NOTE: 004243 STEEL SPRING TINE IS UNAVAILABLE / OBSOLETE
 GROOMER WILL REQUIRE UPDATING TO RUBBER GROOMER FLAP / COMB AND BRACKETS

RUBBER GROOMER COMB CONVERSION ITEMS MDL 4000 / 5000

REQUIRED ITEMS TO CONVERT FROM STEEL SPRING TINES TO RUBBER GROOMER COMB / PADS

<u>Item</u>	<u>Component</u>	<u>Description</u>	<u>Qty</u>
005337		GROOMER PAD: 4000/5000 CENTER	1
005339		BRKT: GROOMER COMB, CENTER	1
005340		BRKT: GROOMER COMB, OUTSIDE	2
500131		GROOMER PAD: 4000/5000 RIGHT	1
500132		GROOMER PAD: 4000/5000 LEFT	1
P100504		BOLT: HEX, 5/16" NC X 1" GR5 ZN	18
P155350		NUT: HEX, 5/16 TOP-LOCK	18
P850105		WASHER: FLAT GALV-5/16"	18
P851105		WASHER: LOCK 5/16" GALV	18

NOTE:

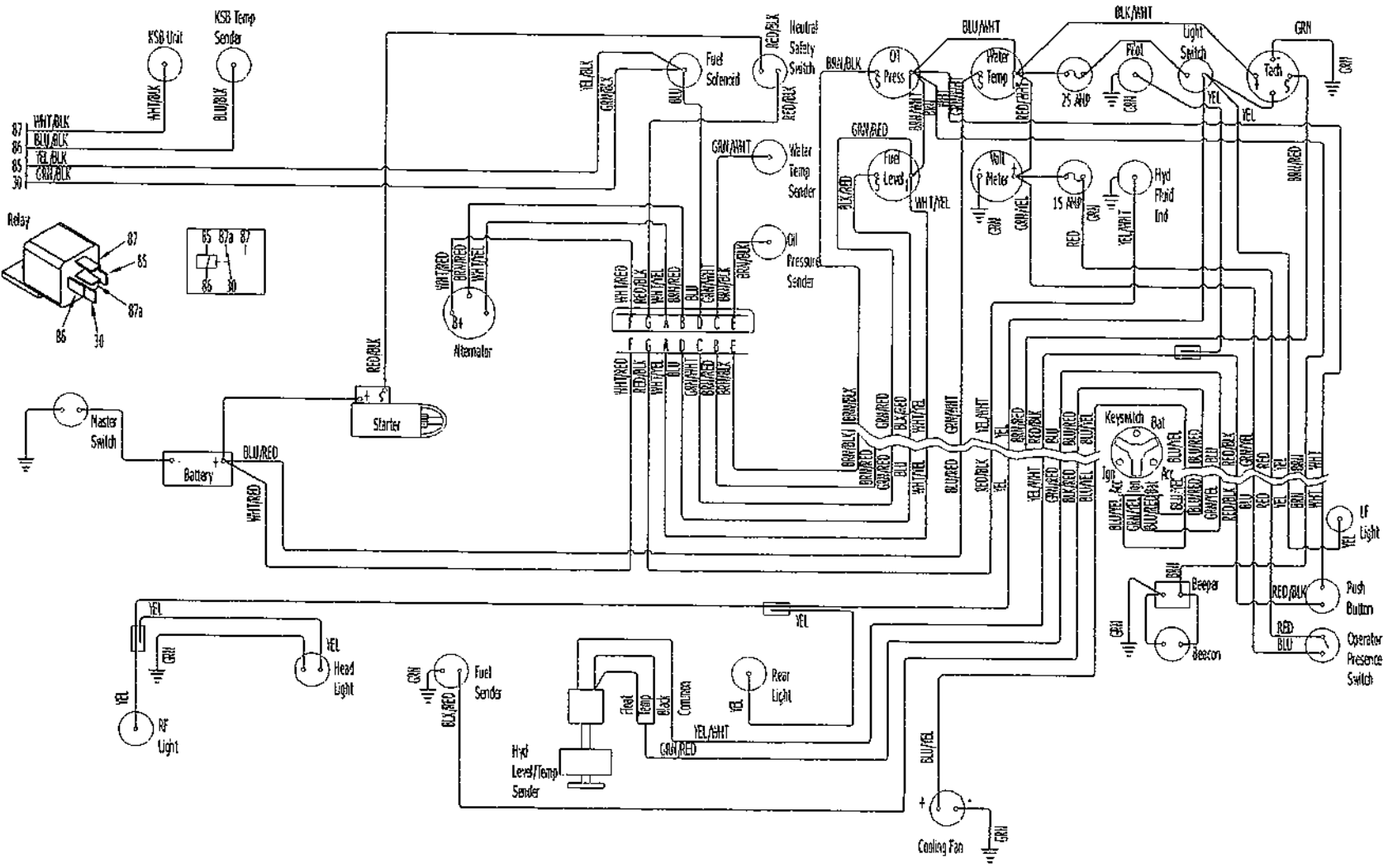
ABOVE LISTED ITEMS CONVERT AN EXISTING STEEL SPRING TINE GROOMER TO MODERN RUBBER COMBS
GROOMER WILL BE UPDATED WITH 3 INDIVIDUAL RETROFITABLE SECTIONS:

LEFT

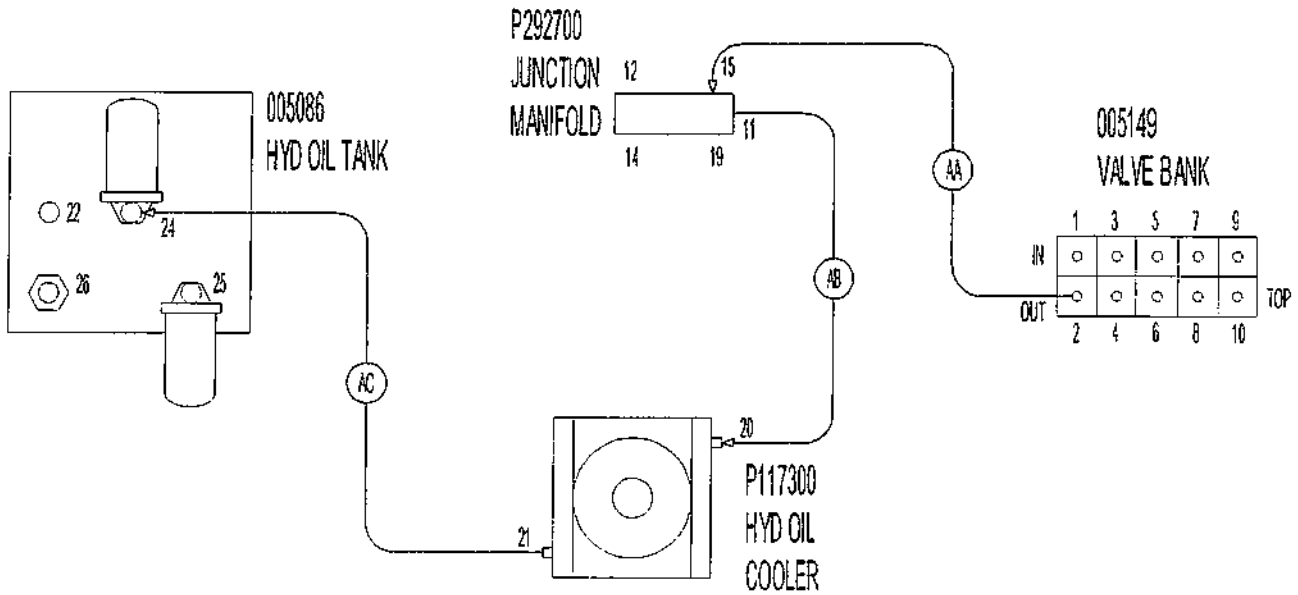
CENTER

RIGHT

WIRING DIAGRAM



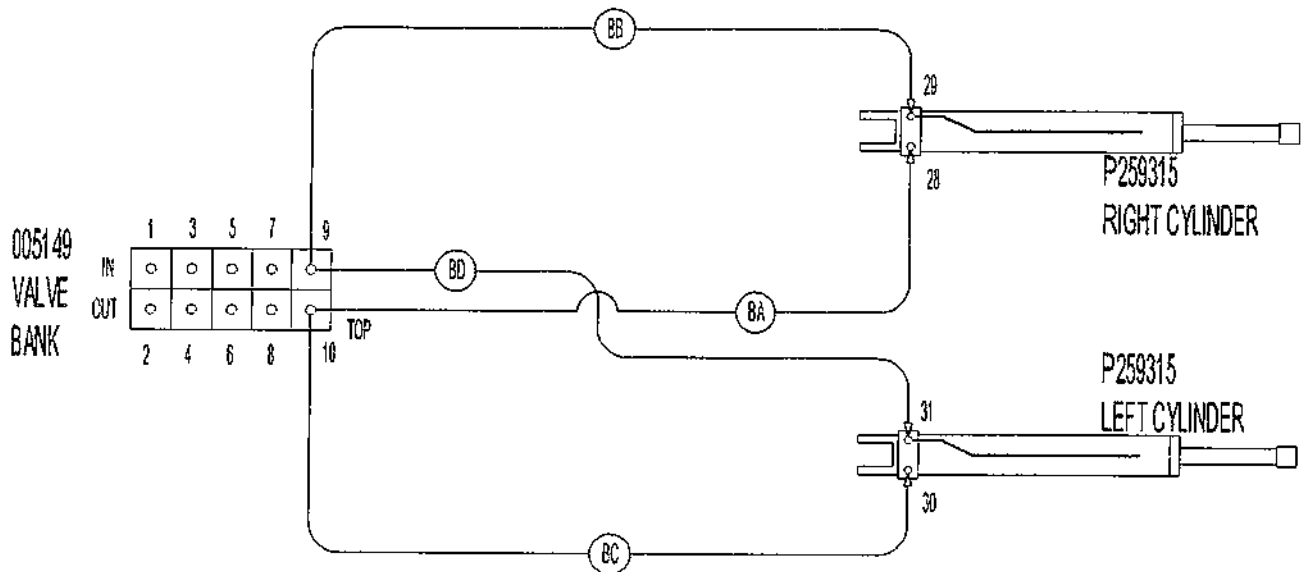
HYDRAULIC RETURN/COOLER CIRCUIT



71.P117310 HYD COOLING FAN

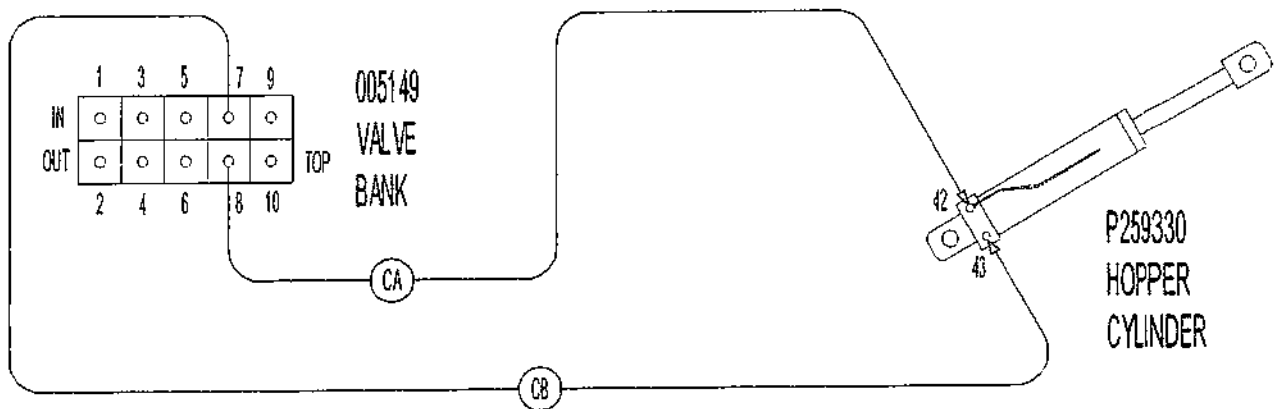
- AA. 12MJ-10MB, Hose P286052, 12MJ-10MB90
- AB. 16MJ-16MB90, Hose P288045, 16MJ-16MB90
- AC. 16MJ-16MB90, Hose P288021, 16MJ-20MB45, FILTER, 20MB-20FP

HOPPER LIFT CIRCUIT



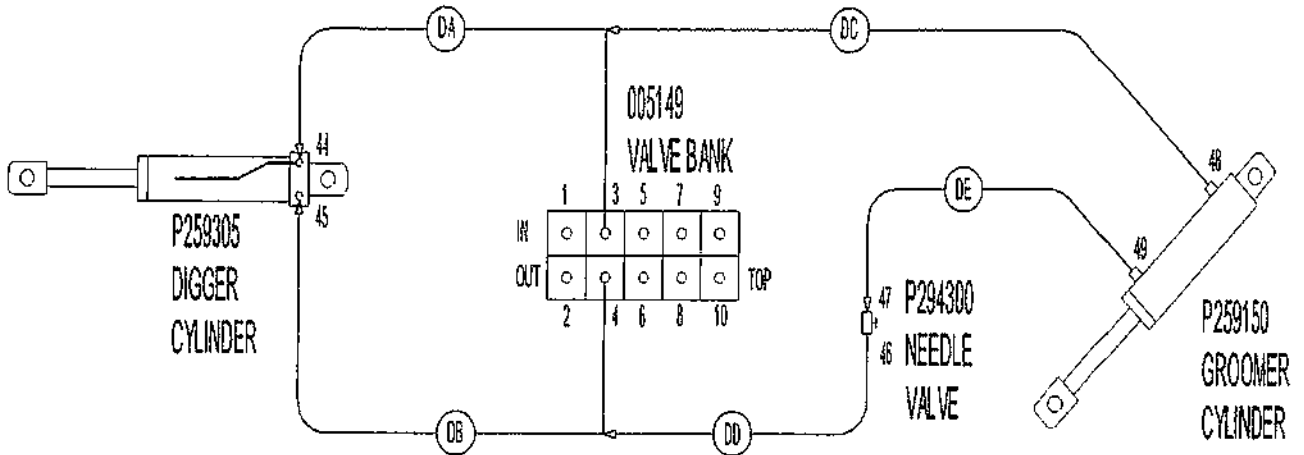
- BA. 6MJ-8MB .115R, 6MJ-6FJX-6MJ, Hose P283059, 6MJ-6MB90
- BB. 6MJ-8MB, 6MJ-6FJX-6MJ, Hose P283059, 6MJ-6MB90
- BC. Hose P283197, 6MJ-6MB90
- BD. Hose P283197, 6MJ-6MB90

HOPPER ROLLOVER CIRCUIT



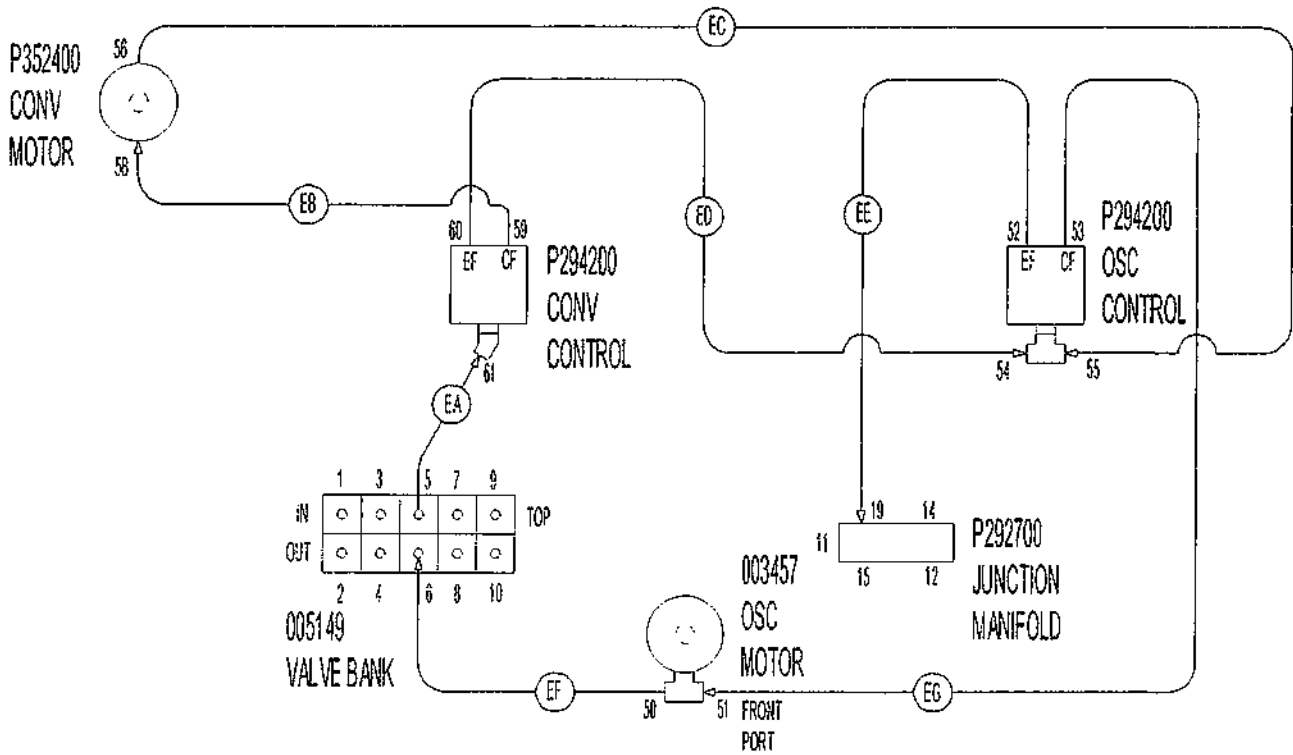
- CA. GP-8MJ-8MB-4FP, Hose P283811, 6MJ-6MB90
- CB. 6MJ-8MB .035R, Hose P283112, 6MJ-6MB90

DIGGER/GROOMER CIRCUIT



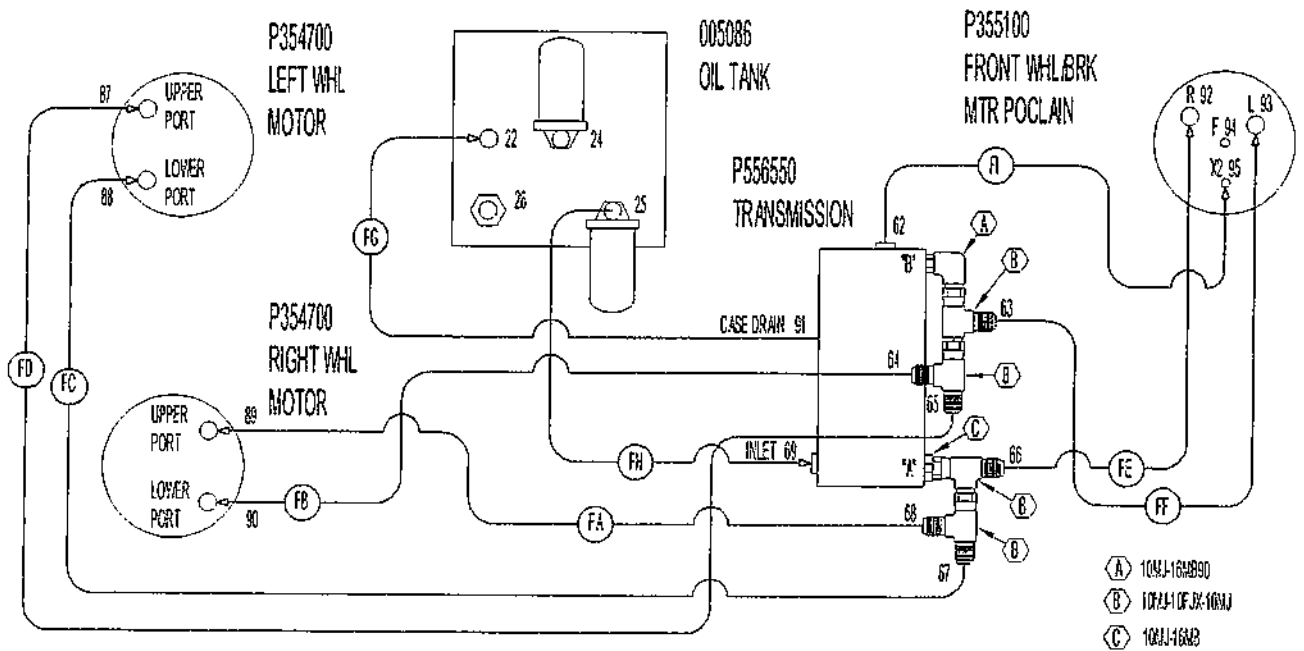
- DA. 6MJ-8MB, 6MJ-6FJX-6MJ, Hose P283124, 6MJ-6MB90
- DB. 6MJ-8MB .065R, 6MJ-6FJX-6MJ, Hose P283124, 6MJ-6MB90
- DC. 4MJ-4MP90, Hose P282126
- DD. 4MJ-4MP90, Hose P282024
- DE. 4MJ-4MP90, Hose P282150, 4MJ-4MP90

CONVEYOR/OSCILLATOR CIRCUIT



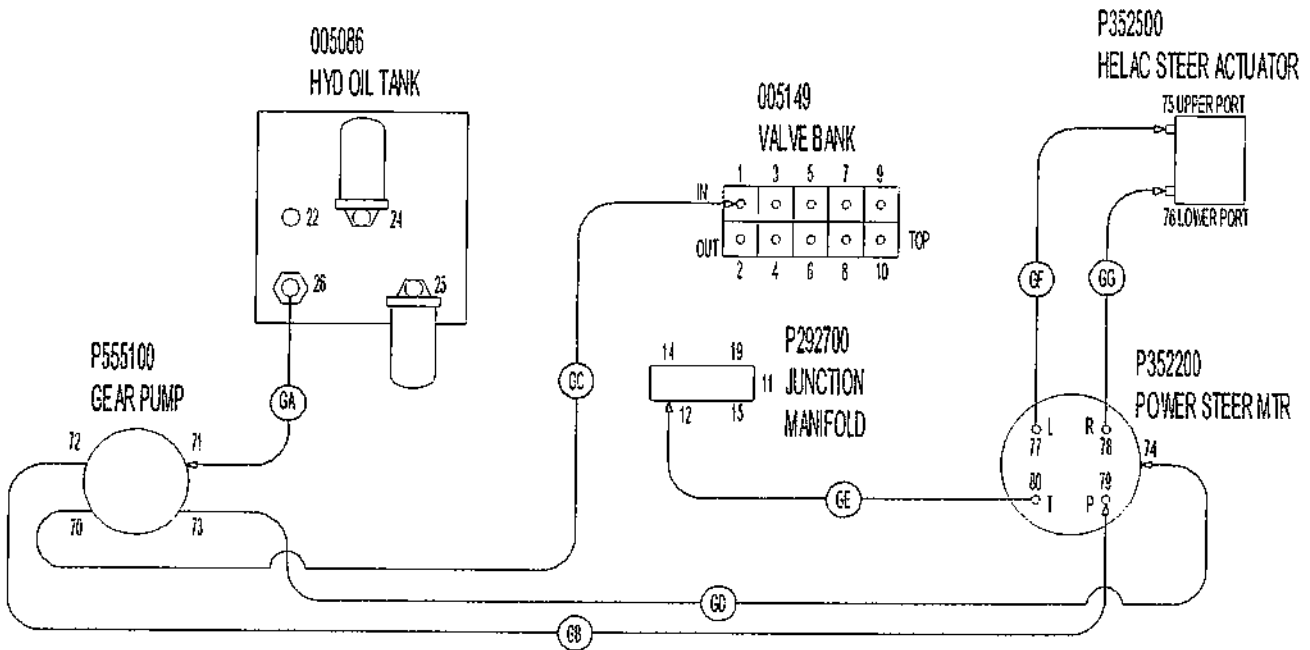
- EA. 8MJ-8MB, Hose P284024, 8MJ-12MB45
- EB. 8MJ-12MB90, Hose P284902, 8MJ-10MB45
- EC. 8MJ-10MB45, Hose P284196, 8MJ-8FJX-8MJ, 12MB
- ED. 8MJ-12MB90, Hose P284025
- EE. 8MJ-12MB90, Hose P284065, 8MJ-10MB90
- EF. 8MJ-10MB90, Hose P284081, 8MJ-8MB
- EG. 8MJ-12MB90, Hose P284095, 8MJ-10MB90

HYDROSTATIC DRIVE CIRCUIT



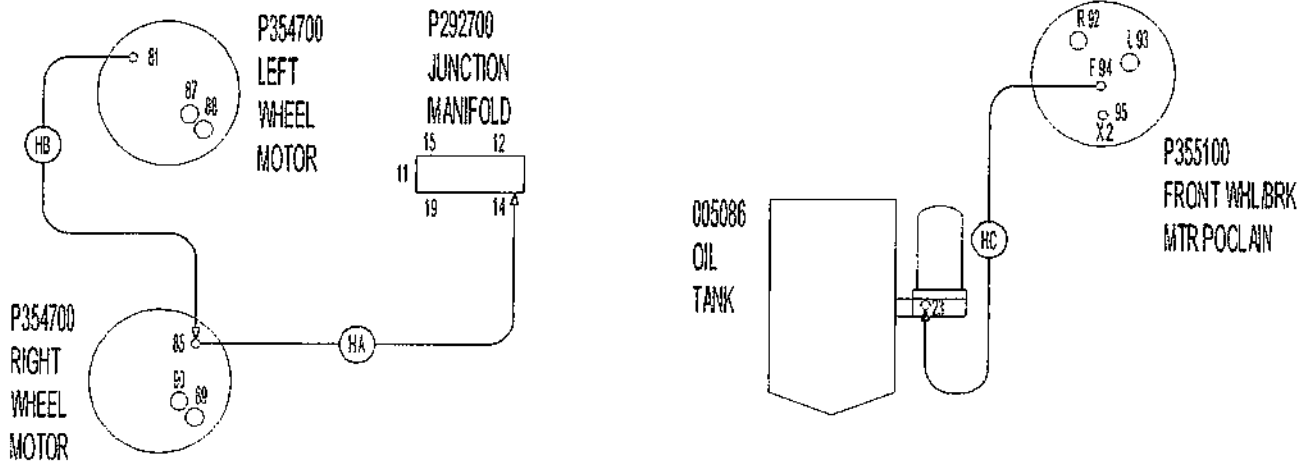
- FA. Hose P284089, 8MJ-16MB
- FB. Hose P284089, 8MJ-16MB
- FC. Hose P284157, 8MJ-16MB
- FD. Hose P284157, 8MJ-16MB
- FE. Hose P284496, 8MJ-12BSPP
- FF. Hose P284496, 8MJ-12BSPP
- FG. 8MJ-12MB, Hose P284031, 8MJ-8MP90
- FH. 20MB-20FP, FILTER, 16MJ-20MB90, Hose P288026, 16MJ-16MB
- FI. 4MJ-6MB90, Hose P282400, 4MJ-4BSPP

POWER STEERING CIRCUIT



- GA. 20MJ-20MP90, Hose P289030, 20MJ-16MB
- GB. 6MJ-8MB90, Hose P283123, 8MJ-8MB
- GC. 12MJ-10MB45, Hose P286075, 12MJ-10MB
- GD. 4MJ-4MB, Hose P282118, 4MJ-4MB90
- GE. 8MJ-8MB LONG, Hose P283111, 6MJ-6MB90
- GF. 8MJ-8MB LONG, Hose P283498, 6MJ-4MB90
- GG. 8MJ-8MB, Hose P283498, 6MJ-4MB90

WHEEL MOTOR CASE DRAIN CIRCUIT



- HA. 4MJ-4MB45, 4MJ-4FJX-4MJ, Hose P282077, 4MJ-6MB90
- HB. 4MJ-4MB, Hose P282068
- HC. 4MJ-6BSPP, Hose P282445, 4MJ-2MP90