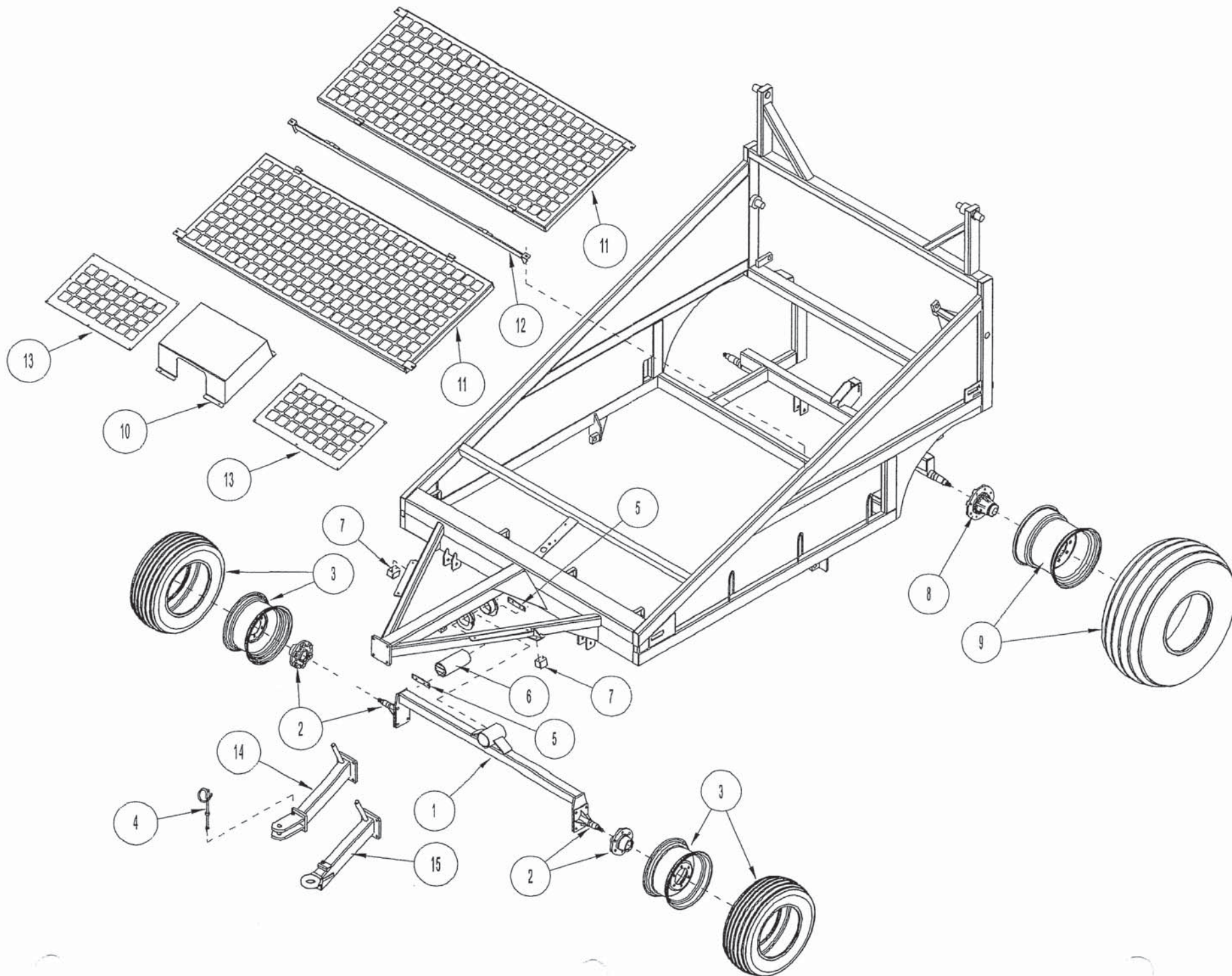




Model 4700XL

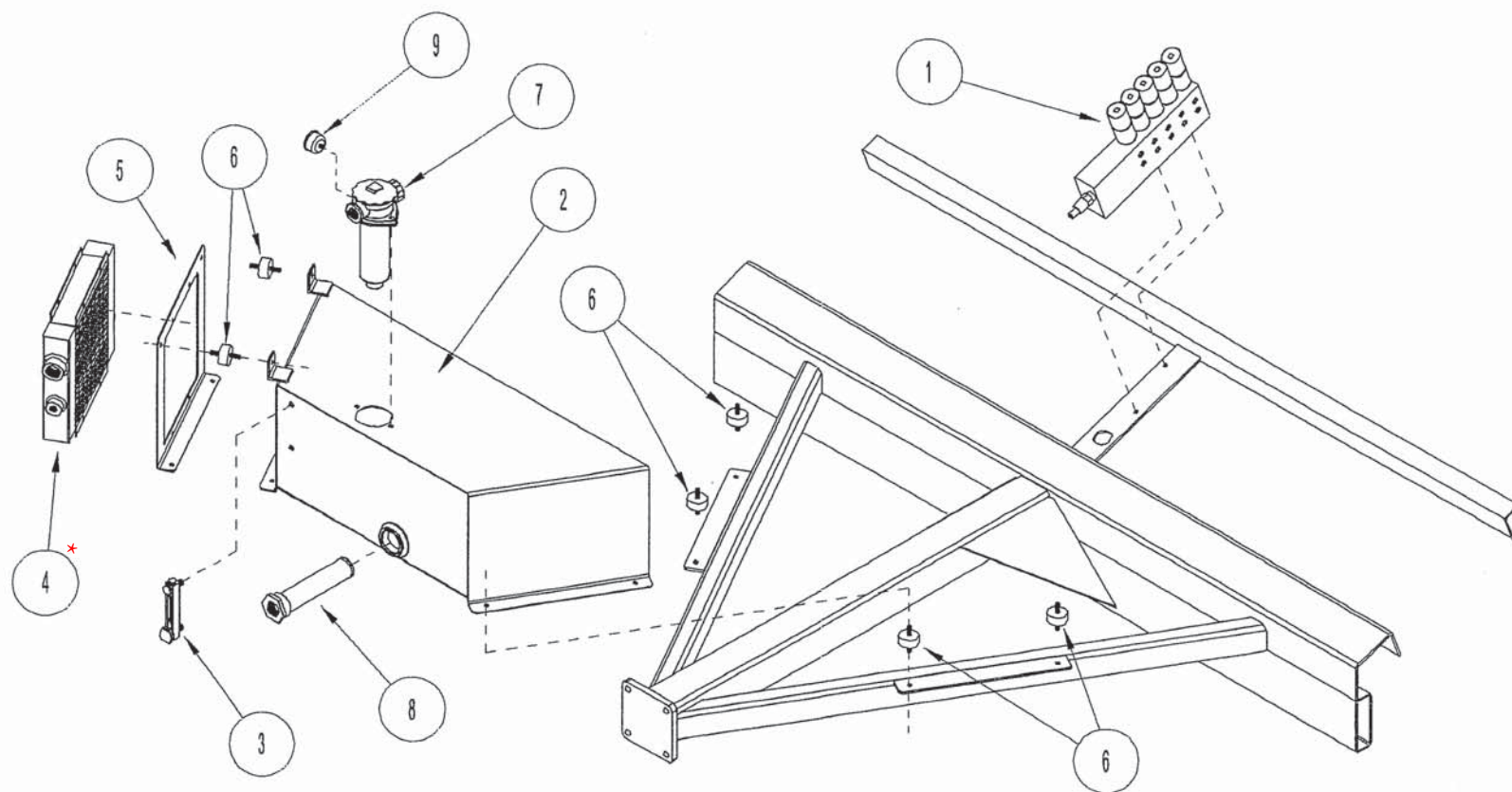
PARTS MANUAL

Cherrington Parts & Service Toll Free 1-800-966-1588



WHEEL ASSEMBLY LEGEND

REF NO.	PART NO.	DESCRIPTION	QTY
1	470009	GAUGE AXLE BEAM	1
2	005201	AXLE ASSEMBLY: GAUGE WHEEL	2
3	005103	GAUGE WHEEL ASSY	2
	P750600	RIM: 15 X 8	2
	P763700	TIRE: 27 X 9.5-8	2
4	005313	HOSE LOOP ASSY; SLIDER	1
5	470105	RETAINER; AXLE PIVOT PIN	2
6	470106	PIVOT PIN; GAUGE AXLE	1
7	P133320	SHOCK BUMPER	2
8	005101	HUB ASSY, 8 BOLT	2
9	470119	WHL ASSY; 16.5 X 16.1	2
	P750800	RIM: PIONEER #106987	2
	P763450	TIRE; 16.5L X 16.1 SL	2
10	470137	SHIELD; VALVE COVER	1
11	470116	SHIELD; CONVEYOR	2
12	470118	HINGE BAR; CONV SHIELD	1
13	470136	SHIELD; CONV FRONT	2
14	470131	HITCH WELD; BOLT-ON CLEVIS	1
15	470132	HITCH WELD; BOLT-ON PINTLE (OPTIONAL)	1
	P120460	HITCH PIN: 1" X 6"	1
	P465200	CAT 2 CROSSBAR #10432	1
	P999000	BOX: OWNERS MANUAL	1



HYDRAULIC COMPONENTS

REF NO.	PART NO.	DESCRIPTION	QTY
1	P292200	VALVE ASSY; 6 BANK 04-0699A-ASY	1
2	470047	OIL TANK 4700	1
3	P297220	GAUGE: OIL SIGHT	1
4 *	P117300	COOLER: HYD OIL AKG DC16-12	1
5	470073	COOLER BRACKET	1
6	P133030	RUBBER MT: 7/8"	6
7	P371920	FILTER; TANK TOP	1
	P371925	FILTER ELEMENT	1
8	P780100	STRAINER: HYD OIL	1
9		RESTRICTION INDICATOR	1
	P556600	PUMP; EATON PTO 77022-LAH (not pictured)	1

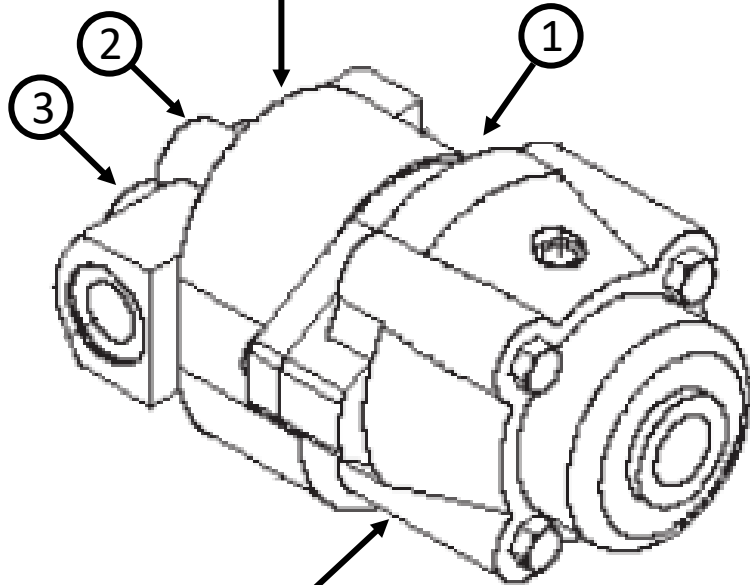
*NOT SHOWN: 71.P117310 COOLING FAN ONLY

PTO PUMP

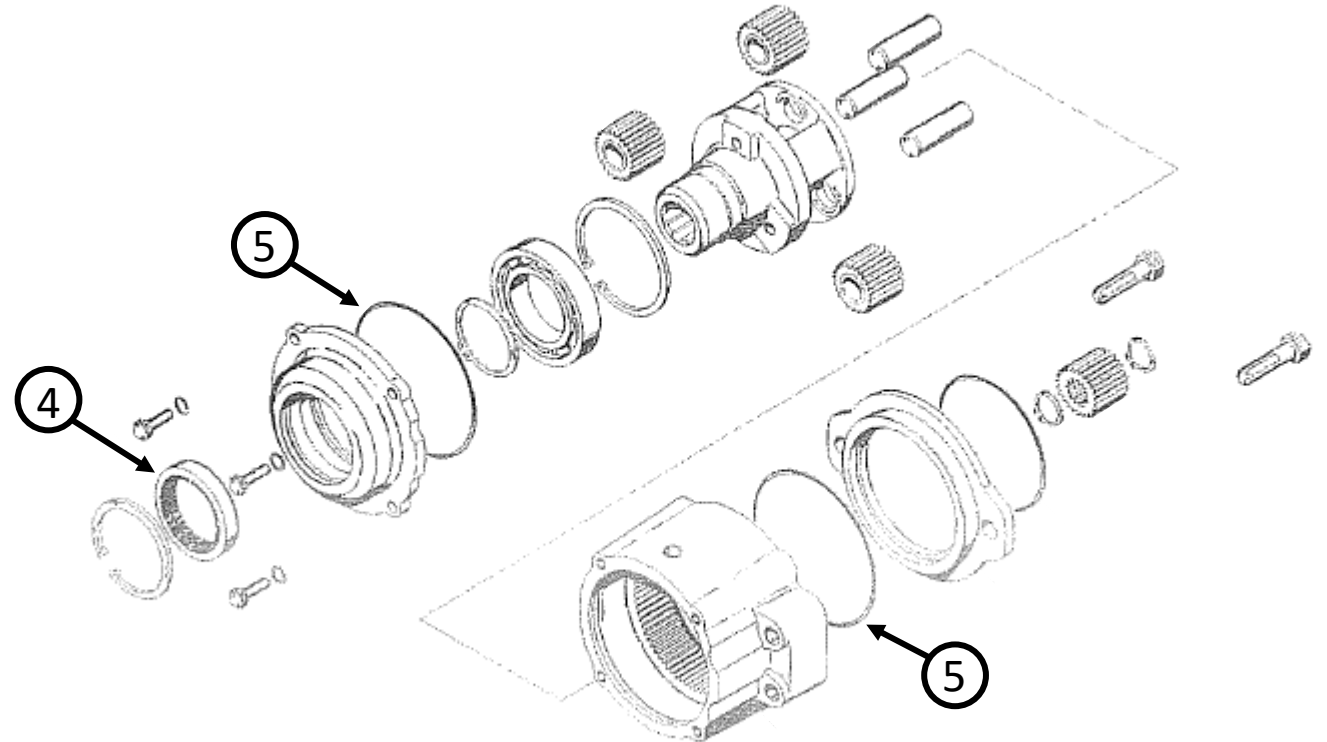
PLANETARY GEARBOX DRIVE / HYDRAULIC GEAR PUMP

- 1) 71.P556600 COMPLETE PUMP ASSEMBLY (PLANETARY GEARBOX / HYDRAULIC GEAR PUMP FULLY ASSEMBLED)
- 2) 71.P556610 HYDRAULIC GEAR PUMP (GEAR PUMP SECTION ONLY)
- 3) 71.P556611 HYDRAULIC GEAR PUMP SEAL KIT
- 4) 71.V16253-34 PTO / PLANETARY GEARBOX INPUT SHAFT SEAL
- 5) 71.V160.15 O RING

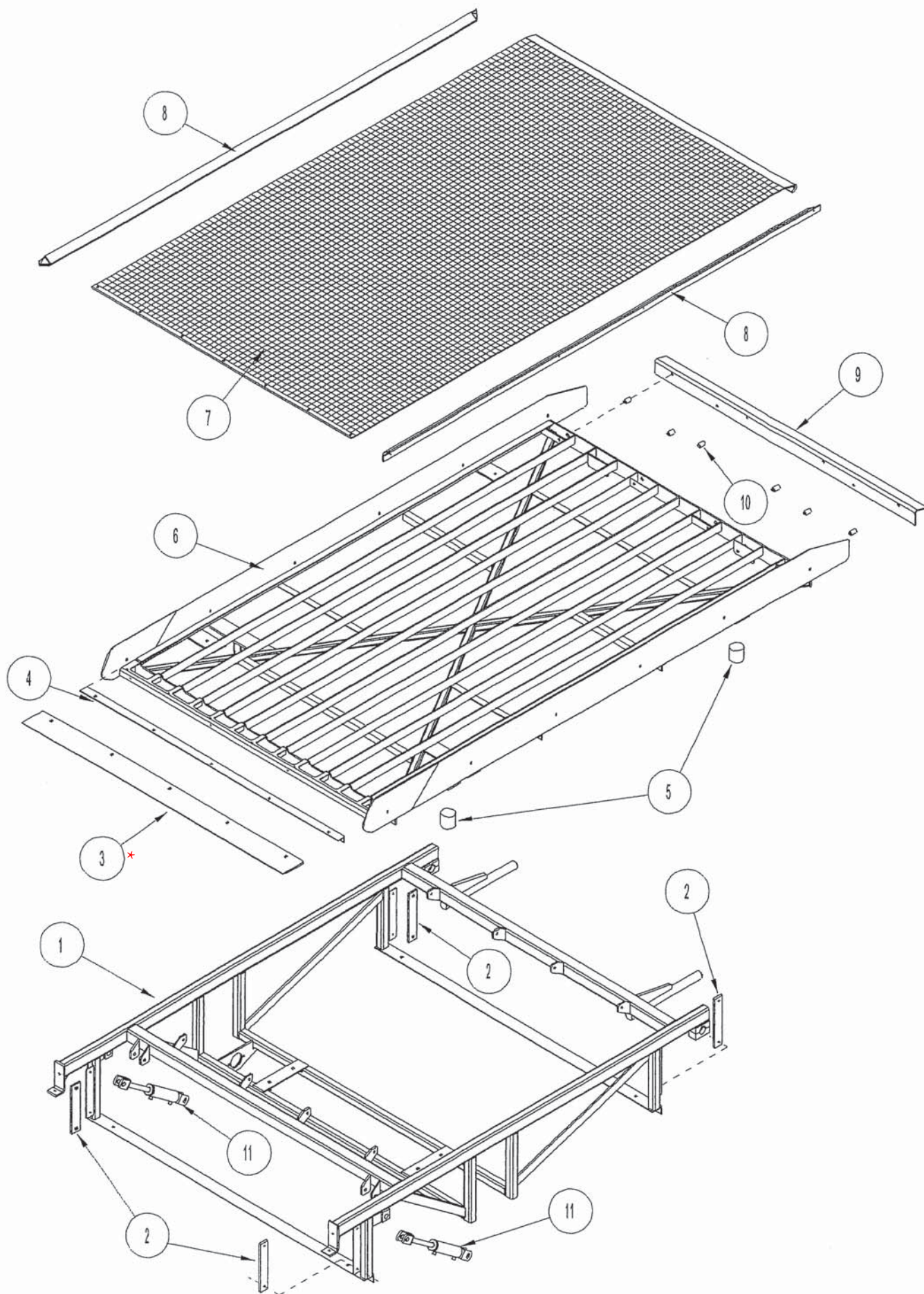
HYDRAULIC GEAR PUMP SECTION



PLANETARY GEARBOX DRIVE SECTION



PLANETARY GEARBOX DRIVE EXPLODED VIEW



SCREEN FRAME

REF NO.	PART NO.	DESCRIPTION	QTY
1	470090	SCREEN FRAME HANGER	1
2	000271M	WEAR STRIPS	4
3*	470042	CUTTING EDGE 4700	1
4	470043	CUTTING EDGE MTG ANGLE	1
5	P133075	ISOLATOR MT; J-5425-275	4
6	470085	SCREEN FRAME 4700	1
7	470099	SCREEN 3/4"	1
	470098	SCREEN 3/8" (OPTIONAL)	1
	470100	SCREEN 1" (OPTIONAL)	1
8	470069	GLIDE RAIL WLD 35°	2
9	470110	TENSION BAR WLD; SCREEN	1
10	470115	BUSHING; TENSION BAR	6
11*	P259305	CYL; 2B X 10 S W/CAV CH	2

* #11 P295305 HYDRAULIC CYLINDER USES PILOT OPERATED LOAD CHECK QTY 1 PER CYLINDER
71.P294250 (NOT INCLUDED WITH CYLINDER)

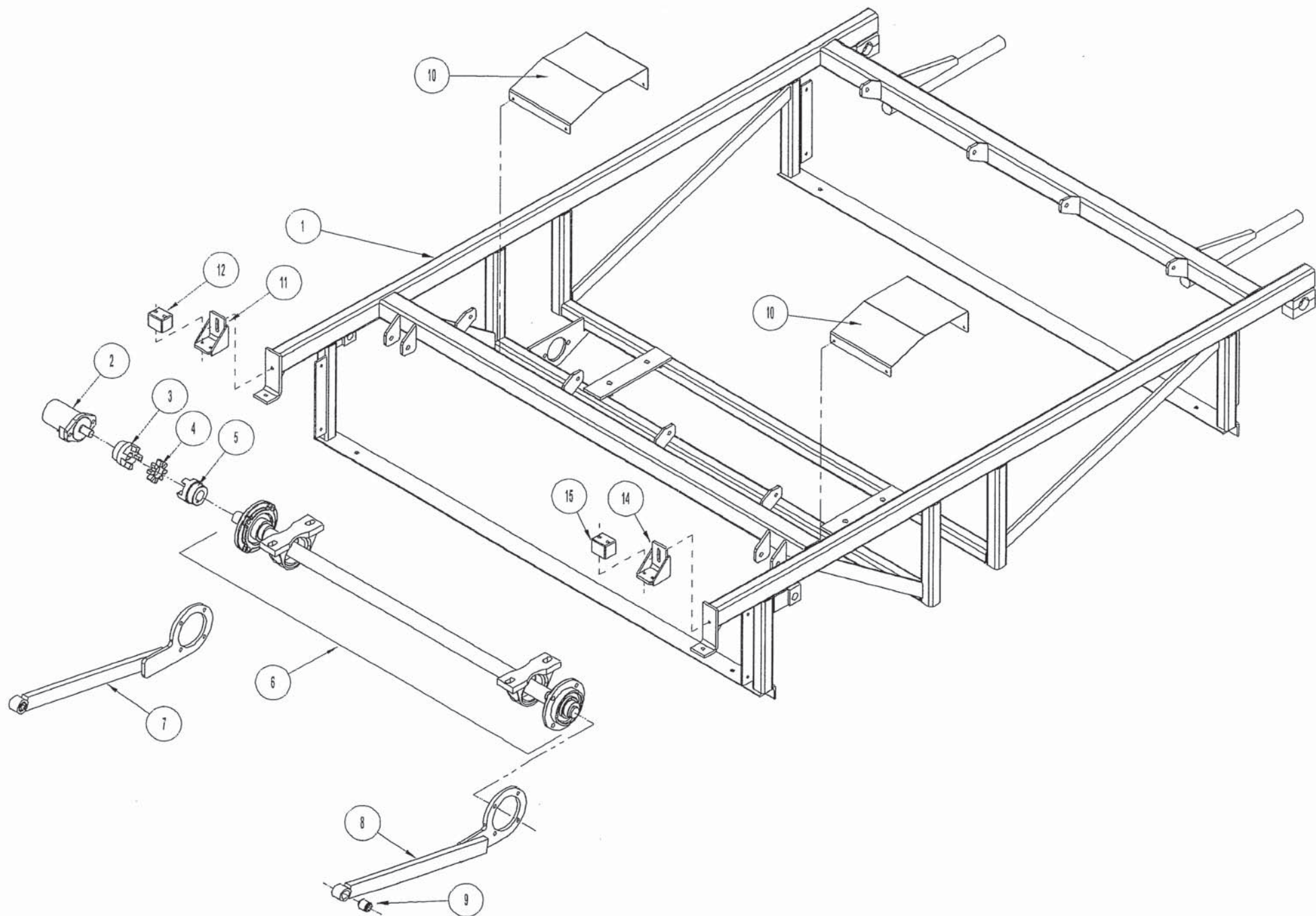
* #3 CUTTING EDGE REPLACED BY UPDATED P/N: 71.470173
(MAY REQUIRE ENLARGING MOUNTING HOLES IN SCREEN FRAME)

NOT SHOWN: CUTTING EDGE MOUNTING HARDWARE

QTY 4 71.P100605 3/8-16 X 1-1/4 GR 5 HEX BOLT

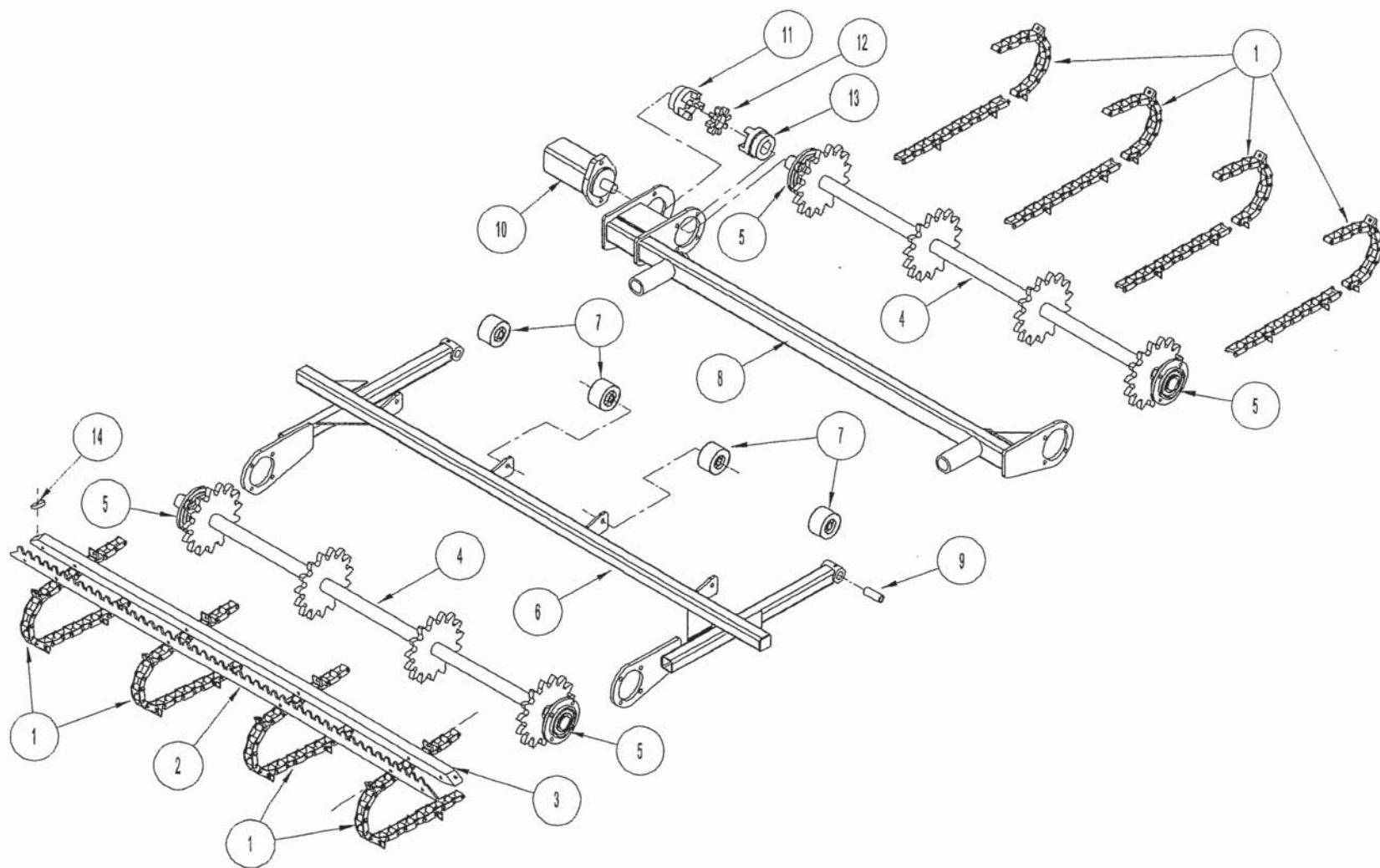
QTY 4 71.P851106 3/8 LOCK WASHER

QTY 4 71.P150600 3/8-16 GR 5 HEX NUT



SCREEN DRIVE

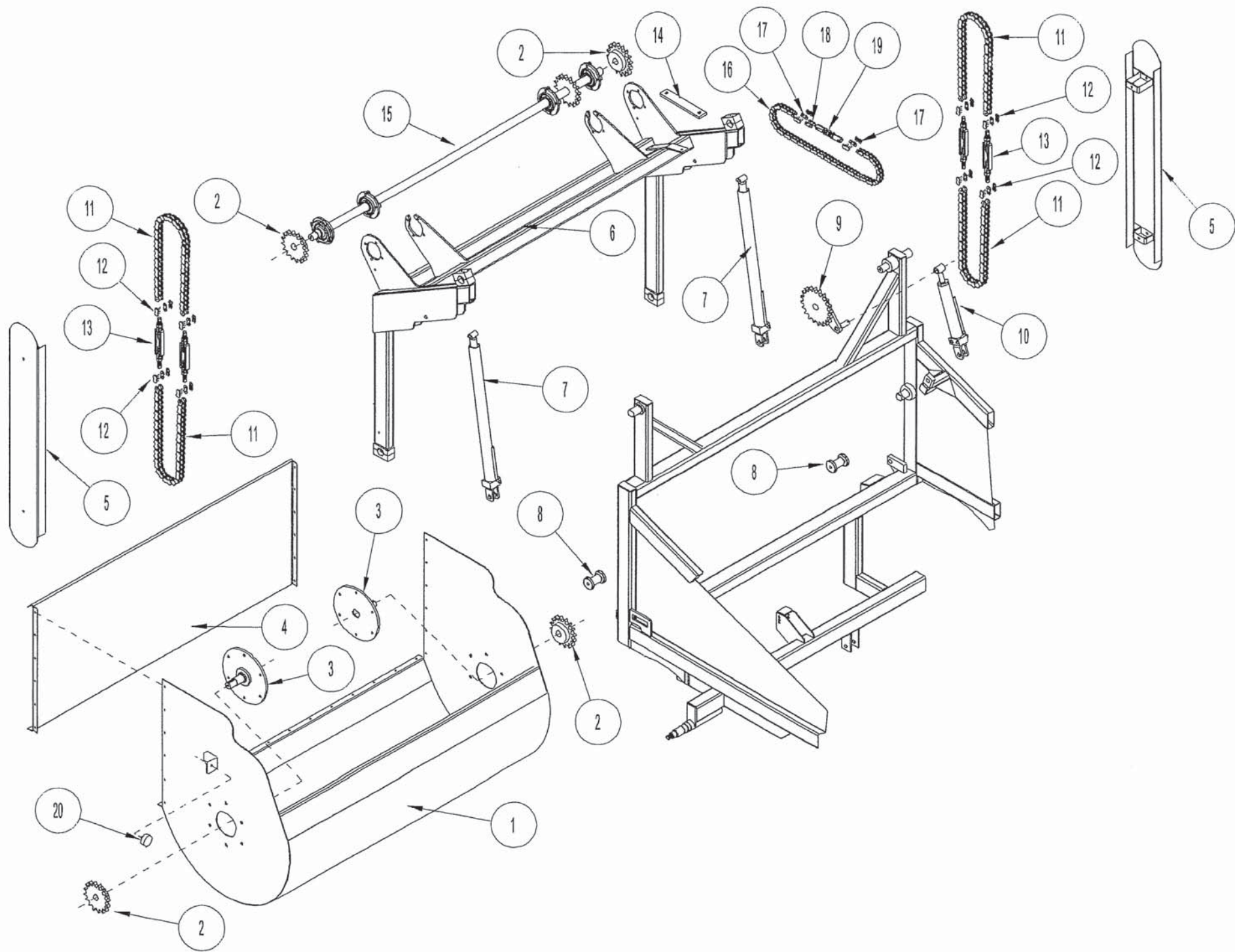
REF NO.	PART NO.	DESCRIPTION	QTY
1	470090	SCREEN FRAME HANGER	1
2	P353400	MTR; C/L 158-1537 4.0 CID	1
	P272910	CPLG ASSY; 38/45 (Includes 3,4,5)	1
3		COUPLER HALF, 38-1B	1
4		COUPLER SPIDER INSERT, 38 SERIES	1
5		COUPLER HALF, 38-1.5B	1
6	470077	PITMAN SHAFT ASSY	1
7	470074	PITMAN ARM RIGHT	1
8	470075	PITMAN ARM LEFT	1
9	P126840	BUSHING; RUBBER J6424-1	2
10	470124	SHIELD; PITMAN BEARING	2
11	470071	BRKT; FRONT SHAFT ADJ	2
12	P133320	SHOCK BUMPER	2



CONVEYOR SYSTEM

REF NO.	PART NO.	DESCRIPTION	QTY
1	P632500	CHAIN; #620 CONV 32 CLT	4
2	470079	FLIGHT BLADE 4700 *SEE NOTE BELOW	32
3	470080	FLIGHT ANGLE 4700	32
4	470044	SHAFT WELD; 4700 CONV	2
5	P003115	BEARING; S/M #MFC-28 3C	4
6	470034	CONVEYOR SUPPORT 4700	1
7	P761100	SNUGULATOR 2500BD1X	4
8	470081	SHAFT MOUNT REAR	1
9	470123	BUSHING; 1" X 5/8" X 2-5/8"	2
10	P353500	MTR; C/L 104-1206 18.7 CID	1
	P272970	CPLG ASSY; 42/55 (Includes 11,12,13)	1
11		COUPLER HALF; 42-1.25B	1
12		CPLG SPIDER INSERT; 42 SERIES	1
13		COUPLER HALF; 42-1.75B	1
14	470130	FLIGHT PUCK	64

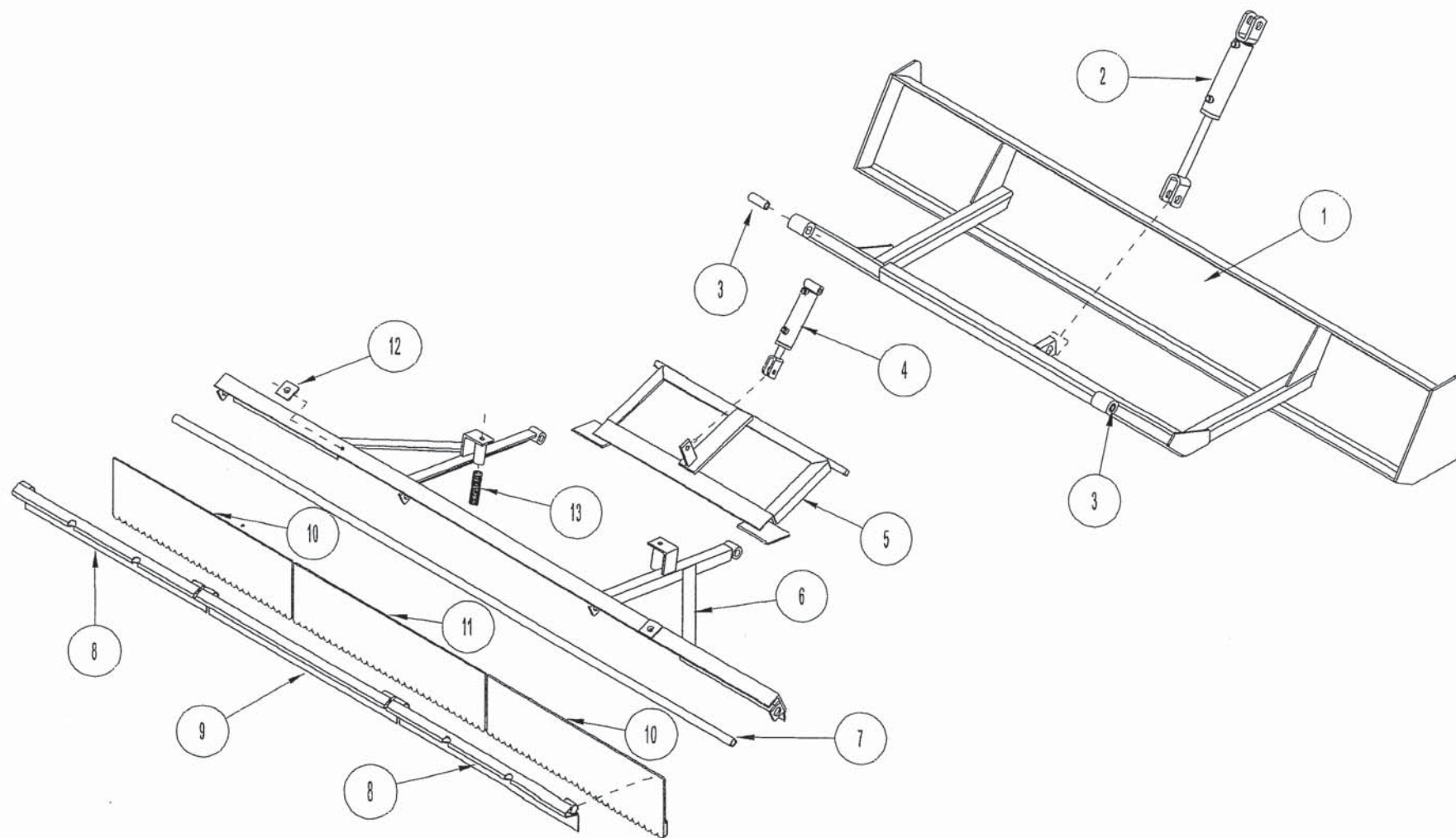
71.470079 REPLACED BY UPDATED P/N: 71.470170



HOPPER AND ROLLOVER COMPONENTS

REF NO.	PART NO.	DESCRIPTION	QTY
1	470064	HOPPER BODY	1
2	P690818	SPROCKET; H1BF80-018-1.5	4
3	470053	HOPPER DRIVE PLATE	2
4	470067	HOPPER BACK	1
5	470095	ROLL-OVER CHAIN GUARD	2
6	470039	BOOM 4700	1
7	P259360	CYL; 2.5B X 28S W/CAV CH	2
8	P761000	ROLLER; 4" KEEL	2
9	470061	HOPPER CRANK 4700	1
10	P259370	CYL; 2B X 9.75S W/CAV CH	1
11	470140	CHAIN; HOPPER DRIVEN #80 (Includes (2) #12)	4
12	P630301	CONNECTING LINK #80	8
13	470144	TURNBUCKLE ASSY 3/4" SHORT	4
14	000271M	WEARSTRIP, CONV	1
15	470139	DRIVE SHAFT ASSY; HOPPER	1
16	470121	CHAIN; HOPPER R/O 4700 (Includes (2) #17 & (1) #18)	1
17	P630100	CHAIN LINK; #100 CONNECTOR	2
18	P630101	CHAIN LINK; #100 OFFSET	1
19	470142	TURNBUCKLE ASSY 3/4" JACKSCREW	1
20	000358M	STOP, RUBBER	1

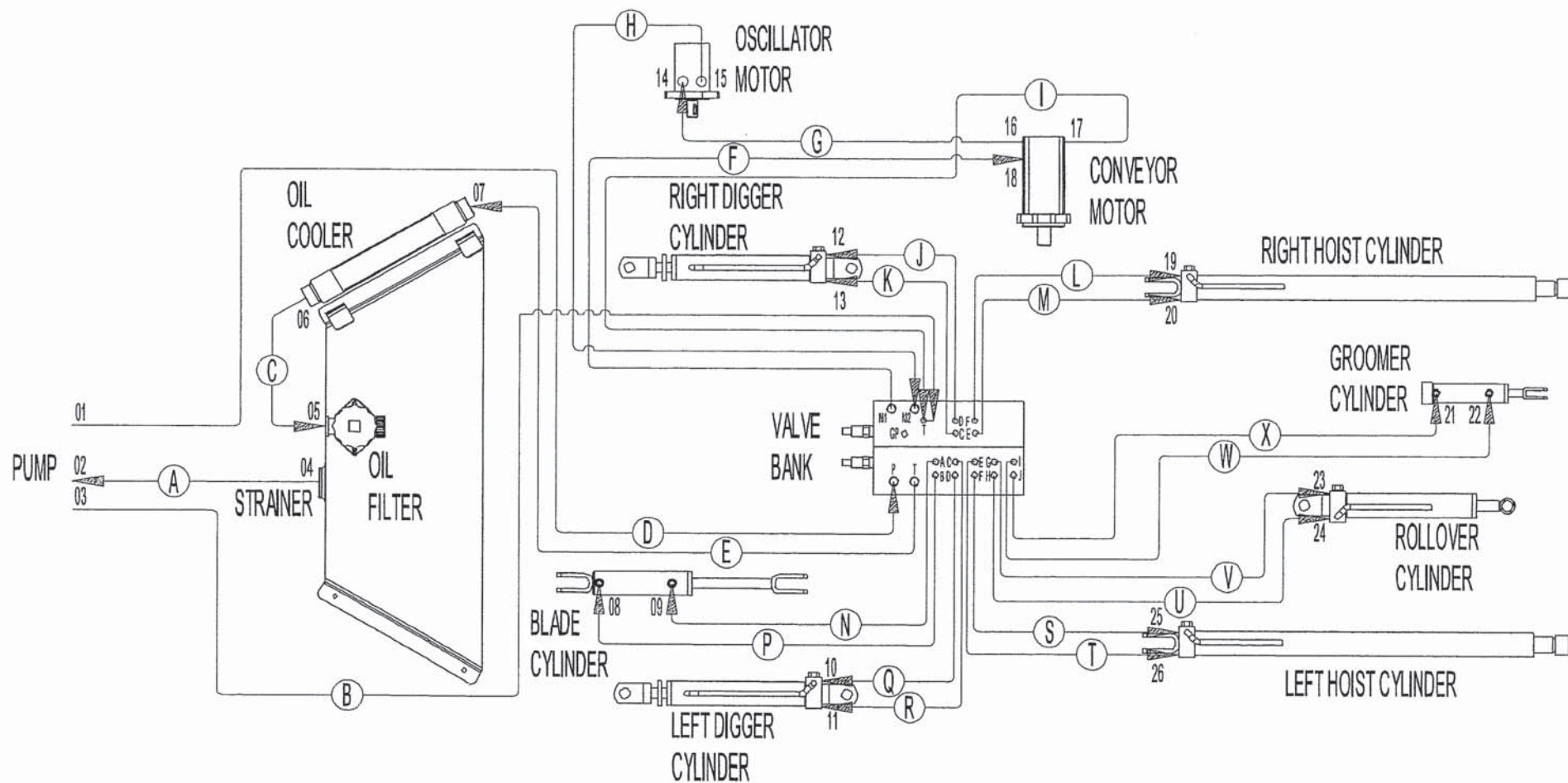
#7 and #8 cylinders pilot operated load check each cylinder uses QTY 1
71.P294250 (NOT INCLUDED WITH CYLINDER)



LEVELER AND GROOMER COMPONENTS

REF NO.	PART NO.	DESCRIPTION	QTY
1	470012	LEVELING BLADE 4700	1
2	P259380	CYL; 1.5B X 6S W/CAV CH	1
3	470123	BUSHING; 1" X 5/8" X 2-5/8"	2
4	P259150	CYLINDER GROOMER	1
	P259151	SEAL KIT: RKT 1.5-0047	1
5	004864	LIFT BRACKET, GROOMER	1
6	004862	GROOMER BAR	1
7	004229	COMB BRKT MOUNT PIPE	1
8	005340	GROOMER COMB BRKT, OUTSIDE	2
9	005339	GROOMER COMB BRKT, CENTER	1
10	005338	GROOMER COMB, OUTSIDE	2
11	005337	GROOMER COMB, CENTER	1
12	004883	WEAR PAD: GROOMER	2
13	P605700	SPRING, DIE 5"	2

#2 CYLINDER pilot operated load check each cylinder uses QTY 1
71.P294250 (NOT INCLUDED WITH CYLINDER)



HYDRAULIC LEGEND

- A. 20MJ-20MP, C420X76, 20MJ-20MB
- B. 4MJ-6MB90, 451ST-4X121, TEE
- C. 12MJ-16MB90, 451ST-12X30, 12MJ-16MB90
- D. 12MB-10MJ, 451ST-10X118, 10MB-10MJ90
- E. 10MB-12MJ, 451ST-12X49, 12MJ-16MB90
- F. 10MJ-10MB, 451ST-10X228, 10MJ-10MB45
- G. 10MJ-10MB45, 451ST-10X122, 10MJ-10MB90
- H. 10MJ-10MB, 451ST-10X139, 10MJ-10MB45
- I. 4MJ-4MB90, 451ST-4X237, TEE, 4MJ-6MB-4MJ
- J. (.100 ORF) 6MJ-6MB45, 451ST-6X158, 6MJ6MB90
- K. 6MJ-6MB45, 451ST-6X158, 6MJ-6MB90
- L. (.100 ORF) 6MJ-6MB45, 451ST-6X209, 6MJ-6MB90
- M. 6MJ-6MB45, 451ST-6X209, 6MJ-6MB90
- N. 4MJ-6MB, 451ST-4X53, 4MJ-6MB90
- P. (.035 ORF) 4MJ-6MB, 451ST-4X46, 4MJ-6MB90
- Q. (.100 ORF) 6MJ-6MB45, 451ST-6X158, 6MJ-6MB90
- R. 6MJ-6MB45, 451ST-6X158, 6MJ-6MB90
- S. (.100 ORF) 6MJ-6MB45, 451ST-6X209, 6MJ-6MB90
- T. 6MJ-6MB45, 451ST-6X209, 6MJ-6MB90
- U. (.045 ORF) 6MJ-6MB45, 451ST-6X184, 6MJ-6MB90
- V. 6MJ-6MB45, 451ST-6X184, 6MJ-6MB90
- W. (.035 ORF) 4MJ-6MB45, 451ST-4X201, 4MJ-4MP90
- X. 4MJ-6MB45, 451ST-4X197, 4MJ-4MP90
- GP. PD361 NIPPLE

ELECTRICAL LEGEND

The EA-1067 control box has six toggle switches. It includes auto up/down function for the Groomer and when the forward Conveyer is turned on the fan and hour meter will be activated.

<u>WIRE COLOR</u>	<u>FUNCTION</u>	<u>PIN</u>
Green	Fan Power (1 of 2)	A
White/Red	Fan Power (2 of 2)	R
Blue	Conveyer Forward	C
White	Conveyer Reverse	E
White/Black	Digger Raise	F
Red	Digger Lower	H
Black/Red	Hopper Raise	J
Blue/White	Hopper Lower	K
Green/White	Hoist Raise	L
Black/White	Hoist Lower	N
Blue/Black	Groomer Raise	O
Green/Black	Groomer Lower	P
Red/Black	Level Blade Raise	Q
Orange/Red	Level Blade Lower	S
Black	Ground	B
Orange	Ground	D
Orange/Black	Ground	G
Red/White	Ground	M
Brown (Betts)	12 VDC Power	
White (Betts)	Ground	

ELECTRICAL CONTROL ITEMS NOT SHOWN IN PARTS BOOK:

71.P292050 CONTROL BOX

71.P292100 MAIN WIRE HARNESS / CONTROL CABLE

71.470317 POWER SUPPLY CABLE