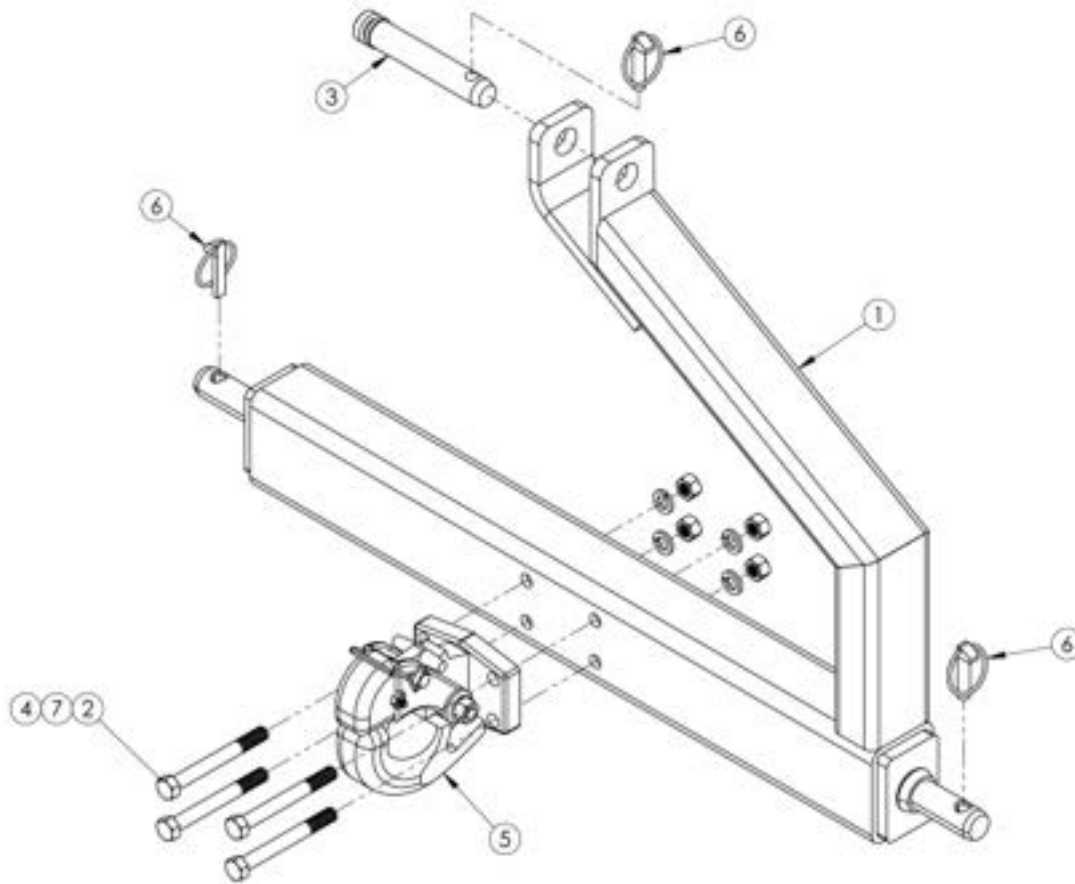


# THREE POINT ADAPTER

<u>ITEM</u>	<u>QTY</u>	<u>PART NO</u>	<u>DESCRIPTION</u>
1	1	460041	PINTLE ADAPTER: 3PT CAT 2 OPEN
2	4	P100818.8	1/2-13 X 4 1/2" HEX BOLT GR 8
3	1	P120410	CAT 2 TOP LINK PIN
4	4	P155850	1/2-13 TOP LOCK HEX NUT
5	1	P466100	PINTLE HOOK 15 TON
6	3	P622603	7/16 X 1 1/4 LYNCH PIN
7	4	P851108	1/2" LOCK WASHER

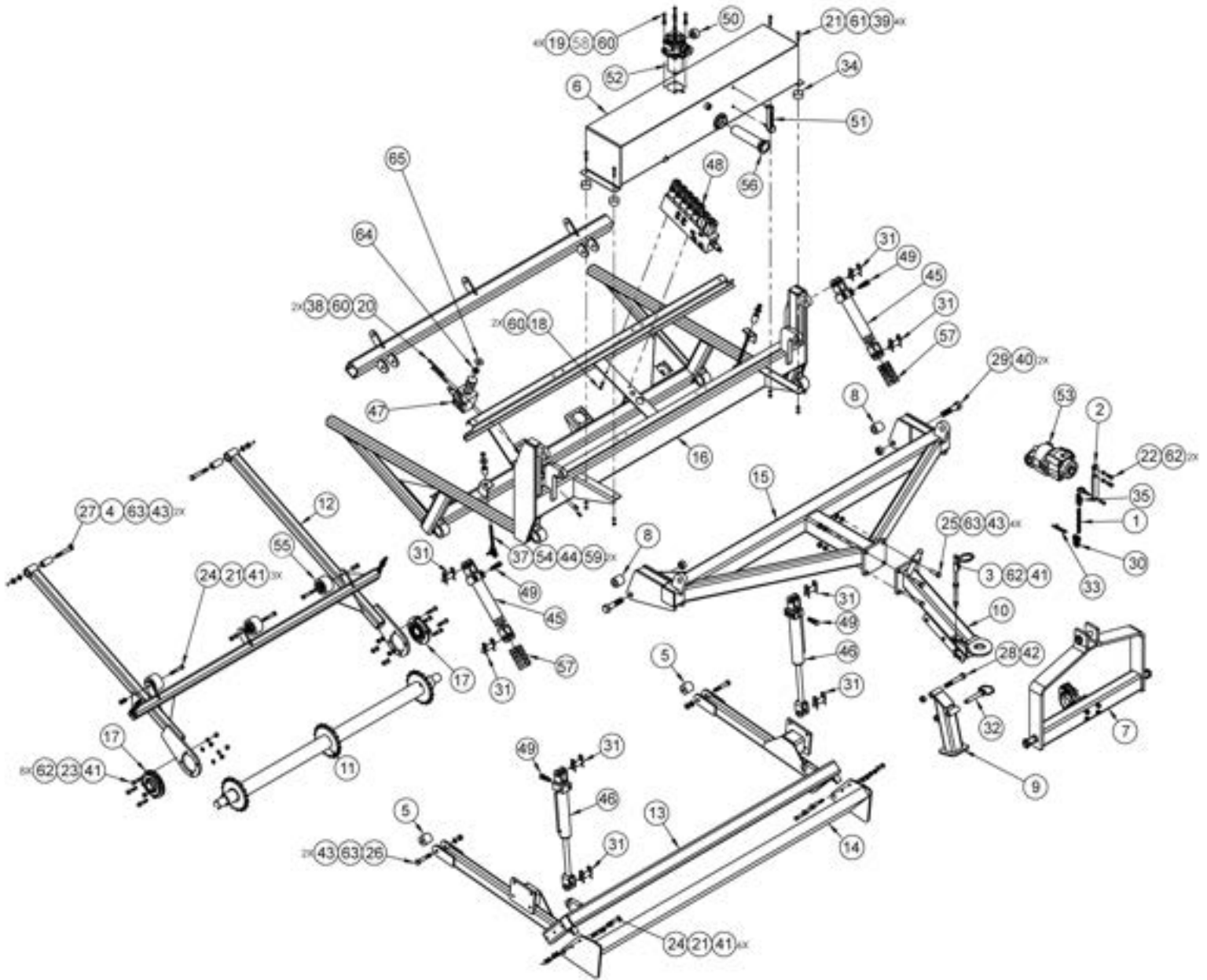


# HITCH, LEVELING BLADE AND RESERVOIR REFERENCE

ITEM NO.	QTY.	PART NO.	DESCRIPTION	ITEM NO.	QTY.	PART NO.	DESCRIPTION
1	1	005123	CHAIN, TOQUE ARM	35	1	P135005	QUICK LINK, 5/16"
2	1	005231	TORQUE ARM, EATON PTO	36	1	P135102	3/8-16 X 1-1/4 FORGED EYE BOLT
3	1	005313	HOSE LOOP ASSY, SLIDER	37	2	P135190	JAW END: 1/2-13 X 9
4	2	450098	BUSHING, NYL 1.25 X .625 X 2.688	38	2	P155350	5/16-18 TOP LOCK NUT
5	2	450112	BUSHING, NYL 2 X .625 X 2	39	5	P155450	3/8-16 TOP LOCK NUT
6	1	450296	HYD RESERVOIR	40	2	P155610	NUT HEX, 1"-8 TOP LOCK
7	1	470323	3 POINT ADAPTER, CAT II ASSY	41	19	P155850	NUT HEX, 1/2-13 TOP LOCK
8	2	480071	BUSHING, HITCH PIVOT 2 X 1 X 2	42	1	P157120	3/4-10 TOP LOCK NUT
9	1	480123	WLDMT: JACK STAND	43	7	P157500	5/8-11 TOP LOCK NUT
10	1	480128	WLDMT: 4800 BOLT ON PINTLE HITCH	44	2	P158005	1/2-13 NYLOCK NUT
11	1	480148	SHAFT WLD, FRONT CONV 72 SB	45	2	P259325	CYL; 2B X 5S W/CAV CH
12	1	460036	CONVEYOR SUPPORT 72 SB	46	2	P259330	CYL, 2B X 8S W/CAV CH
13	1	480156	FRAME, FRONT CARRIER	47	1	P292300	VALVE: PS-VA08-0107-REVA
14	1	480157	LEVELING BLADE WLD	48	1	P292400	VALVE: VA04-0699-1
15	1	480159	HITCH, PIVOT 4800 WLD	49	4	P294250	VALVE, PILOT CHECK CKCB-XFN
16	1	460039	MAIN FRAME, 72 SB PULLED	50	1	P297170	GAUGE, IND LP C1-20
17	2	P003175	BEARING, IPTCI UCFCX09-28 FLANGE	51	1	P297220	GAUGE: OIL SIGHT
18	2	P100503	5/16-18 X 3/4" HEX BOLT	52	1	P371840	FILTER: MPT1042CAG8A10HBT
19	4	P100505	5/16-18 X 1-1/4" HEX BOLT	53	1	P556600	PUMP, EATON PTO #77022-LAH
20	2	P100518	BOLT, HEX 5/16-18 X 4-1/2	54	2	P602420	SPRING, TUBE 1/2 X 1-1/8 X 1-3/4
21	4	P100608	3/8-16 X 2" HEX BOLT	55	4	P761100	SNUGULATOR 2500BD1X
22	2	P100805	1/2-13 X 1-1/4" HEX BOLT	56	1	P278250	STRAINER, HYD OIL
23	8	P100809	1/2-13 X 2-1/4 HEX BOLT	57	2	P781000	STROKE CONT SET
24	10	P100813	1/2-13 X 3-1/4" HEX BOLT	58	4	P850104	1/4" FLAT WASHER
25	4	P101019	5/8-11 X 2-1/4" HEX BOLT	59	2	P850108	1/2" FLAT WASHER
26	1	P101015	BOLT: HEX 5/8-11 X 3-3/4 GR8	60	8	P851105	5/16" LOCK WASHER
27	2	P101017	BOLT, HEX 5/8-11 X 4-1/4	61	5	P851106	3/8" LOCK WASHER
28	1	P101220	3/4-10 X 5" HEX BOLT	62	21	P851108	1/2" LOCK WASHER
29	2	P101617	BOLT, HEX 1"-8 X 4-1/4	63	7	P851110	5/8" LOCK WASHER
30	1	P118070	PIN CLEVIS, 5/16 X 1	64	1	450316	SPACER; NYLON
31	8	P120850	CLEVIS PIN: 1"	65	1	P970006	DECAL: OSC CONTROL 4500
32	1	P121100	PIN: HITCH, 3/4 #71031C	Not Shown	1	P292050	CONTROL BOX : EA1312-E1
33	1	P123005	3/8 SAFETY PIN X 2 1/2	Not Shown	1	P292100	HARNES: WIRE, PS-EA-1067-W1
34	4	P133035	RUBBER SPACER 2" X 1"	Not Shown	1	470317	CORD: POWER ADAPTER



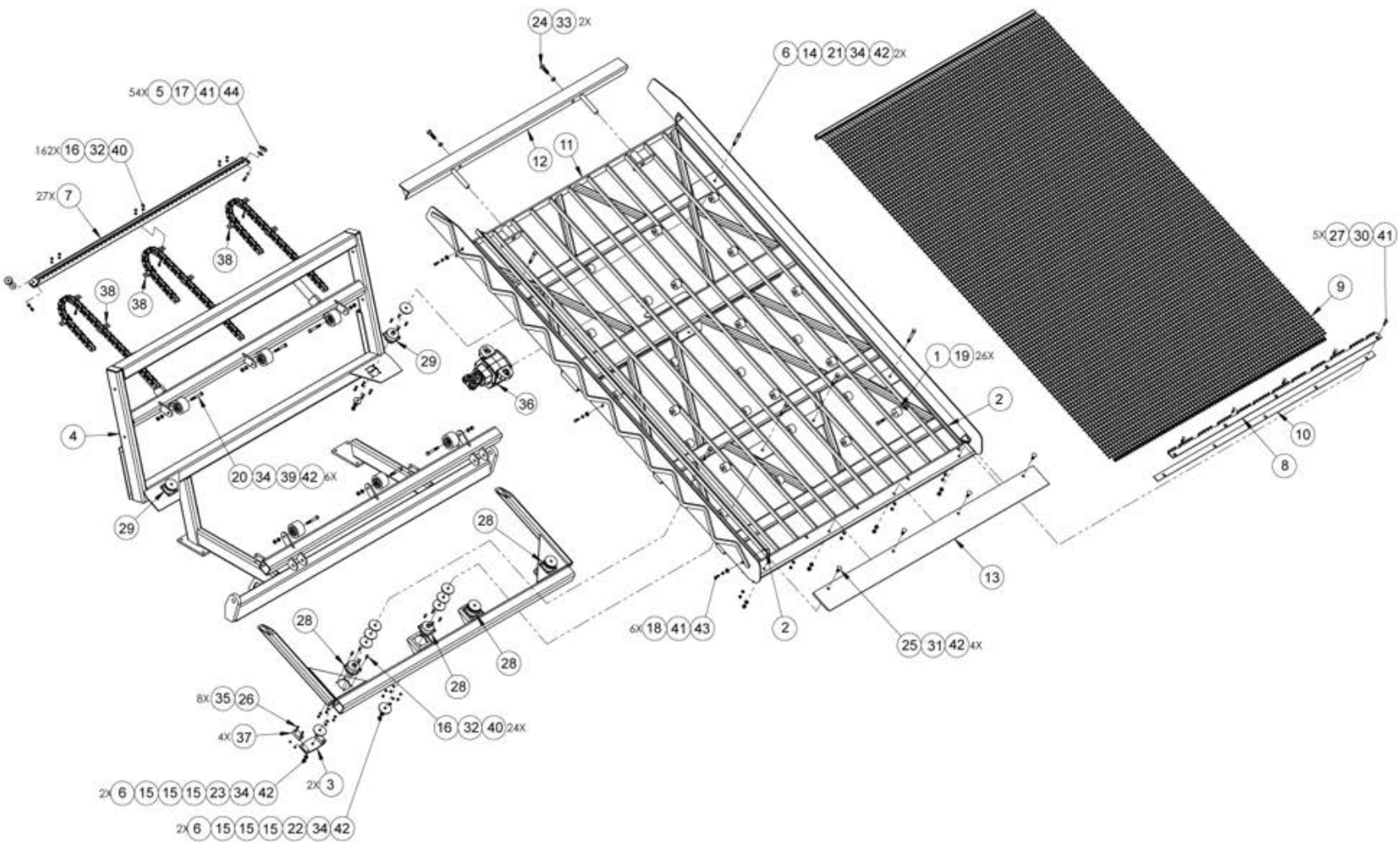
# HITCH, LEVELING BLADE, AND RESERVOIR DIAGRAM



# SCREEN FRAME PARTS REFERENCE

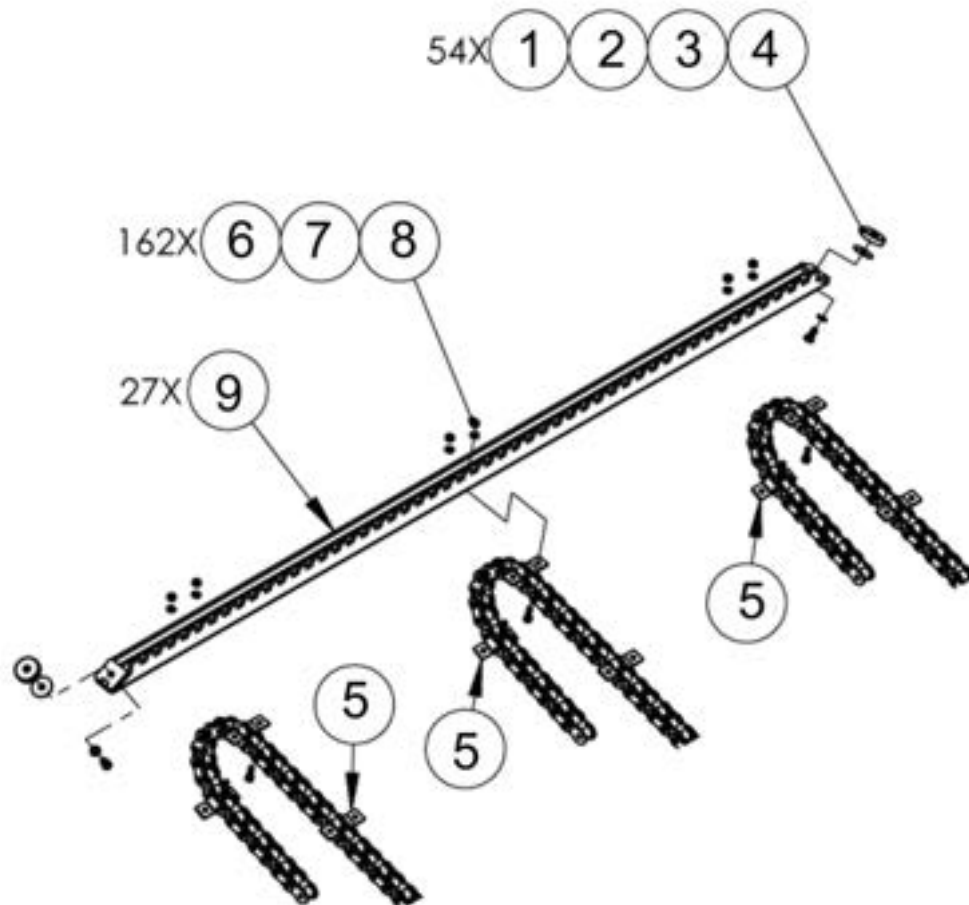
ITEM NO.	QTY.	PART NO.	DESCRIPTION
1	26	450313	RISER, SCREEN
2	2	450247	GLIDE RAIL 4500
3	2	450285	PLATE, ISO STOP
4	1	460039	MAIN FRAME 4600
5	54	470130	FLIGHT PUCK
6	4	480069	SPACER, 1/4 X 1/2 ID X 3 OD
7	27	460023	FLIGHT BLADE 72 SB
8	1	480133	SCREEN HOLD DW 3/4", 72SB
9	1	480136	SCREEN ASSY: 3/4" X 72 SB
10	1	480141	SPACER, FRONT SCREEN LIP 4800
11	1	480142	SCREEN FRAME ASM 72 SB
12	1	480145	SCREEN TENSIONER 72 SB
13	1	480147	CUTTING EDGE 72 SB
14	2	M5009-5	3/16" X 1/2" X 1-3/4" WASHER
15	10	M6223	3/16" X 1/2" ID X 3" OD WASHER
16	186	P100504	BOLT: HEX, 5/16" NC X 1" GR5
17	54	P100603	BOLT: HEX, 3/8" NC X 3/4" GR5
18	6	p100604	BOLT: HEX, 3/8" NC X 1" GR5
19	26	P100808	1/2-13 X 2" HEX BOLT GR8
20	6	P100813	1/2-13 X 3-1/4" HEX BOLT
21	2	P100815	BOLT: HEX, 1/2-13 NC X 3 3/4" GR.5
22	4	P100816	BOLT: HEX, 1/2-13 NC X 4" GR.5
23	2	P100817	BOLT: HEX, 1/2-13 NC X 4 1/4" GR.5
24	2	P101008	BOLT: HEX, 5/8-11 NC X 2
25	4	P104806	BOLT: CARRIAGE, 1/2" X 1-1/2" GR5
26	8	P110404	CAPSCREW, 1/4-20 X 1" ALLEN HD
27	5	P114606	BOLT, PLOW 3/8 X 1-1/2
28	4	P133064	ISOLATOR: SQ PLATFORM 283P250
29	2	P133065	ISOLATOR: SQ PLATFORM 283P310
30	5	P150600	3/8-16 HEX NUT
31	4	P150800	NUT: HEX, 1/2" PLATED
32	186	P155350	NUT: HEX, 5/16 TOP-LOCK
33	2	P155800	5/8-11 HEX JAM NUT
34	10	P155850	NUT: HEX, 1/2" TOP-LOCK
35	8	P158003	NUT, HEX, 1/4 ELASTIC STOP
36	1	P358100	VIBRATOR, HYD HA4-3300
37	4	P605010	SPRING BUMPER, 3/4
38	3	P632100	CHAIN: 100K1 x 220 P
39	6	P761100	SNUGULATOR 2500BD1X
40	186	P851105	WASHER: LOCK 5/16"
41	54	P851106	3/8" LOCK WASHER
42	17	P851108	1/2" LOCK WASHER
43	6	P851606	3/8" HEAVY WASHER
44	54	P852015	WASHER, 3/8 FENDER

# SCREEN FRAME DIAGRAM



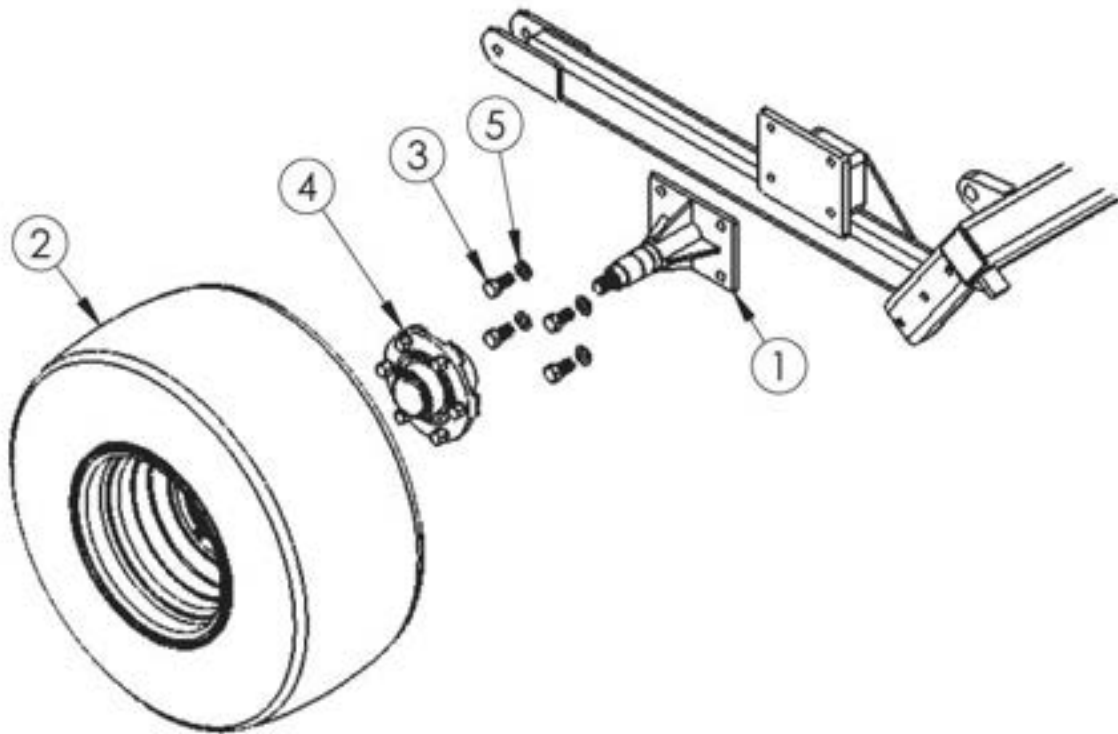
# CHAIN AND FLIGHT ASSEMBLY

<u>ITEM</u>	<u>QTY</u>	<u>PART NO</u>	<u>DESCRIPTION</u>
1	54	470130	FLIGHT PUCK
2	54	P852015	WASHER, 3/8 FENDER
3	54	P851106	WASHER: LOCK 3/8"
4	54	P100603	BOLT: HEX, 3/8"NC X 3/4" GR5 ZN
5	2	P632100	CHAIN: 100K1 x 220 P
6	162	P100504	BOLT: HEX, 5/16" NC X 1" GR5 ZN
7	162	P851105	WASHER: LOCK 5/16"
8	162	P155350	NUT: HEX, 5/16 TOP-LOCK
9	27	460023	WLD: FLIGHT BLADE 4600



## OPTIONAL GAUGE WHEEL ASSEMBLY

<u>ITEM</u>	<u>QTY.</u>	<u>PART NO</u>	<u>DESCRIPTION</u>
1	2	005201	AXLE WLD, GAUGE WHEEL
2	2	470152	WHEEL ASSY, 26 X 12-12
3	8	P101005	5/8-11 X 1-1/4" HEX BOLT
4	2	P764300	HUB ASSEMBLY, 6 BOLT
5	8	P851110	5/8" LOCK WASHER



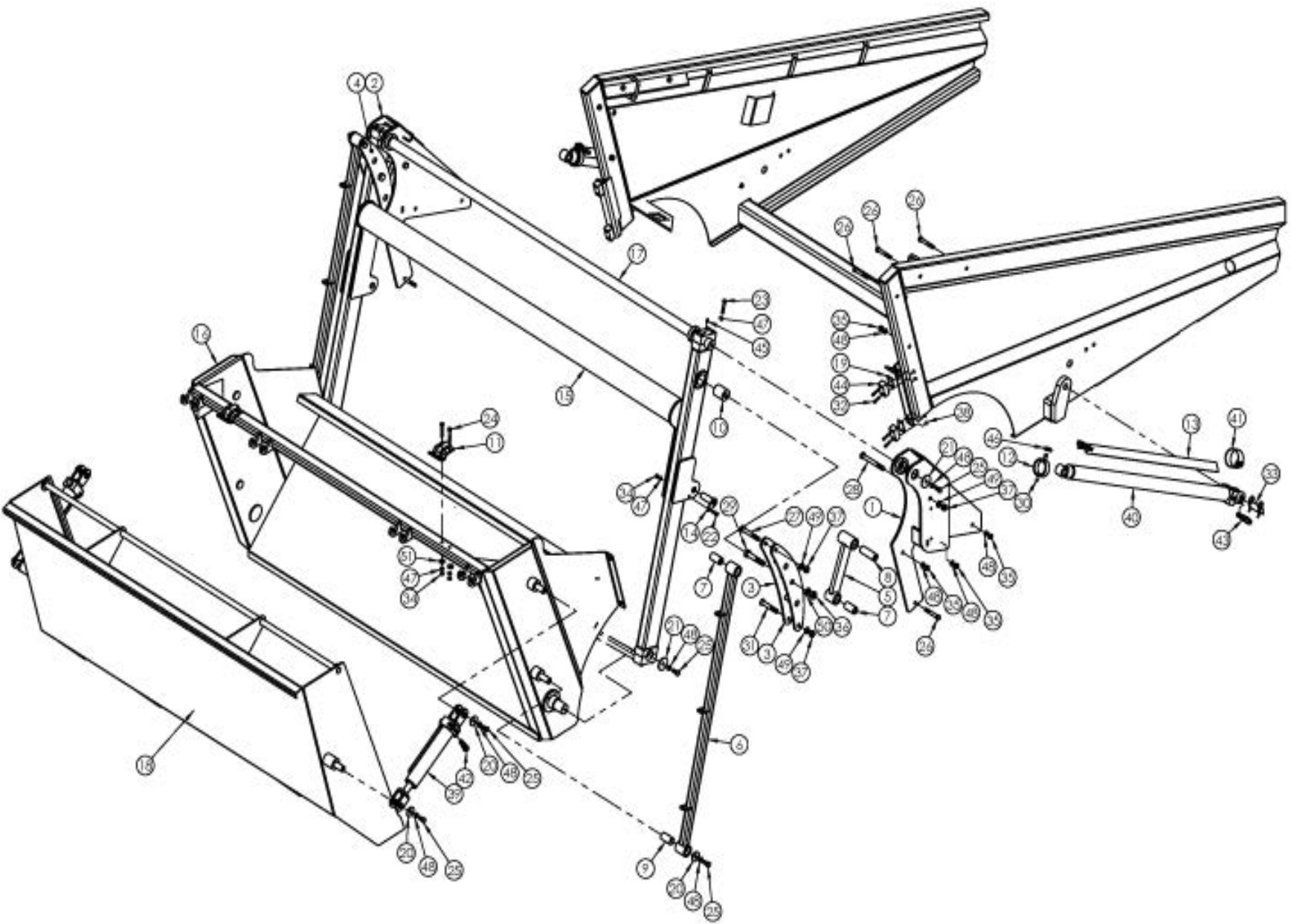
# HIGH LIFT (MODEL 4600XL) REFERENCE

<u>ITEM NO.</u>	<u>QTY.</u>	<u>PART NO.</u>	<u>DESCRIPTION</u>
1	1	450114	MT: HIGH LIFT RH
2	1	450115	MT: HIGH LIFT LH
3	1	450117	SCISSOR ARM WLD RH
4	1	450118	SCISSOR ARM WLD LH
5	2	450120	LINK: SCISSOR ACTION BASE
6	2	450121	LINK: SCISSOR ACTION PARALLEL
7	4	450138	BUSHING: NYL 1.25 X .625 X 2.312
8	2	450139	BUSHING, NYL 1.25 X .625 X 3.5
9	2	450140	BUSHING: NYL 1.25 X 1 X 2.312
10	2	450141	BUSHING: NYL 2 X .75 X 2.312
11	2	450149	HOPPER LOCK, WLD
12	2	450193	RETAINER, PROP BAR
13	2	450194	SAFETY PROP BAR ASM
14	2	480087	PIN, 1" X 3" LOCK
15	1	480166	BOOM WLD 72 SB
16	1	480167	HOPPER BASE WLD 72 SB
17	1	480170	PIVOT, HIGH LIFT STABILIZER
18	1	480174	HOPPER DOOR WELD, 2 YD
19	4	M30079	SPACER: BUMPER
20	6	M5009-5	3/16" X 1/2" X 1-3/4" WASHER
21	4	M5462	3/16 X 1/2 ID X 2-1/4 OD WASHER
22	2	P100604	3/8-16 X 1.0" HEX BOLT
23	16	P100609	3/8-16 X 2-1/4 HEX BOLT
24	4	P100610	3/8-16 X 2-1/2 HEX BOLT
25	10	P100804	1/2-13 X 1" HEX BOLT
26	8	P100813	1/2-13 X 3-1/4" HEX BOLT
27	2	P101016	BOLT: HEX 5/8-11 X 4" GR8
28	2	P101021	BOLT: HEX 5/8-11 X 5-1/4
29	2	P101216	BOLT, HEX 3/4-10 X 4 GR8
30	2	P108606	SET SCREW, 3/8-16 X 3/8
31	2	P110750	BOLT: FLAT HD SOCKET 5/8-11 X 4" Z
32	8	P110912	CAPSCREW, 1/4-20 X 1-1/4 ALLEN HD
33	2	P120850	CLEVIS PIN: 1"
34	6	P155450	3/8-16 TOP LOCK NUT
35	8	P155850	NUT HEX, 1/2-13 TOP LOCK
36	2	P157120	3/4-10 TOP LOCK NUT
37	6	P157500	5/8-11 TOP LOCK NUT
38	8	P158003	NUT, HEX, 1/4 ELASTIC STOP
39	2	P259330	CYL, 2B X 8S W/CAV CH
40	2	P259335	CYL; 2B X 42S W/CAV 1" BARREL END
41	2	P259999	STRAP: 12" STD DUTY CINCH
42	2	P294250	VALVE, PILOT CHECK CKCB-XFN
43	2	P294260	VALVE, COUNTERBALANCE CHECK CBCG-LJN
44	4	P605000	SPRING BUMPER
45	4	P620200	1/4-28 STR GREASE FITTING
46	2	P622604	PIN, LYNCH 3/16 X 1-1/4
47	22	P851106	3/8" LOCK WASHER
48	18	P851108	1/2" LOCK WASHER
49	6	P851110	5/8" LOCK WASHER
50	2	P851112	3/4 LOCK WASHER
51	4	P851606	3/8" HEAVY WASHER





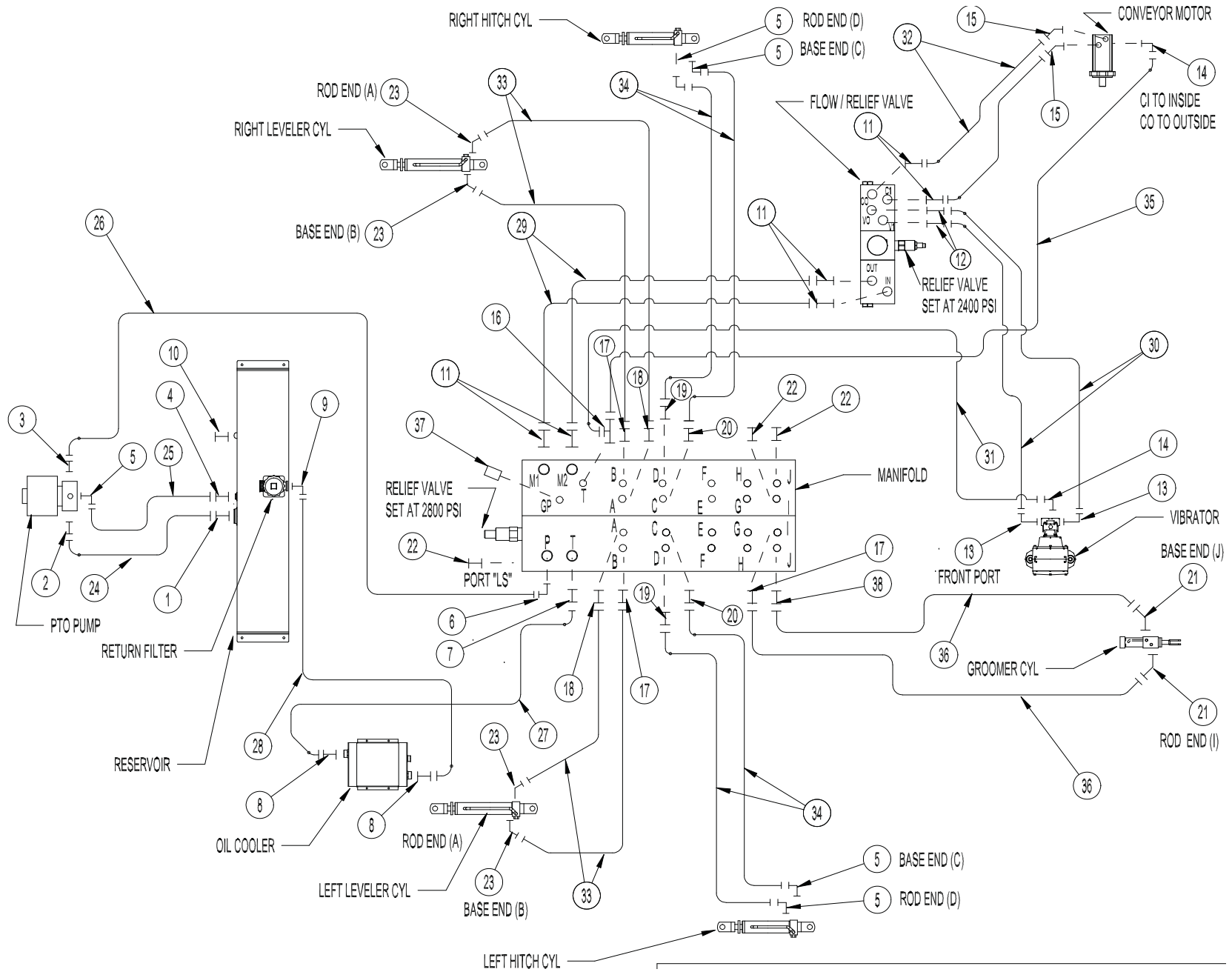
# HIGH LIFT (MODEL 4600XL) DIAGRAM



# HYDRAULICS REFERENCE

<u>ITEM</u>	<u>QTY</u>	<u>PART NO</u>	<u>DESCRIPTION</u>
1	1	P277192	FITTING 20MJ 24MB
2	1	P277190	FITTING 20MJ 20MB
3	1	P276458	FITTING 10MJ 12MB
4	1	P276110	FITTING 6MJ 8MB
5	1	P261350	FITTING 6MJ 6MB90
6	1	P276202	FITTING 10MJ 10MB90
7	1	P276440	FITTING 12MJ 10MB
8	2	P277100	FITTING 12MJ 16MB
9	1	P277106	FITTING 12MJ 16MB90
10	1	P278005	FITTING 8MB PLUG
11	6	P276200	FITTING 10MJ 10MB
12	2	P276430	FITTING 8MJ 10 MB
13	2	P261010	FITTING 8MJ 8MB90
14	6	P261400	FITTING 4MJ 4MB90
15	2	P276201	FITTING 10MJ 10MB45
16	2	P265425	FITTING 6MB 4MJ 4MJ
17	3	P261452	FITTING 4MJ 6MB
18	3	P276115	FITTING 4MJ 6MB W/ .035 ORIFICE
19	2	P276104	FITTING 6MJ 6MB W/ .110 ORIFICE
20	2	P276101	FITTING 6MJ 6MB
21	2	P261420	FITTING 4MJ 4MB45
22	3	P270906	FITTING 6MB PLUG
23	4	P261458	FITTING 4MJ 6MB45
24	1	P289975	HOSE-SUCTION 75" 20FJ 20FJ90
25	1	P283081	HOSE- 6 X 81" 6FJ 6FJ
26	1	P285100	HOSE-10 X 100" 10FJ 10FJ90 W/ CORDURA
27	1	P286031	HOSE-12 X 31" 12FJ45 12FJ90 (180 ROTATION)
28	1	P286047	HOSE-12 X 47" 12FJ 12FJ90
29	2	P285029	HOSE-10 X 29" 10FJ 10FJ
30	2	P284120	HOSE-8 X 120" 8FJ 8FJ45
31	1	P282152	HOSE-4 X 152" 4FJ 4FJ90
32	2	P285126	HOSE-10 X 126" 10FJ 10FJ45
33	4	P282042	HOSE-4 X 42" 4FJ 4FJ90
34	4	P283060	HOSE-6 X 60" 6FJ 6FJ90 LONG
35	1	P282166	HOSE-4 X 166" 4FJ 4FJ45
36	2	P282184	HOSE-4 X 184" 4FJ 4FJ
37	1	P276290	NIPPLE, DIAGNOSTIC
38	1	P276114	FITTING: 4MJ 6MB .062R



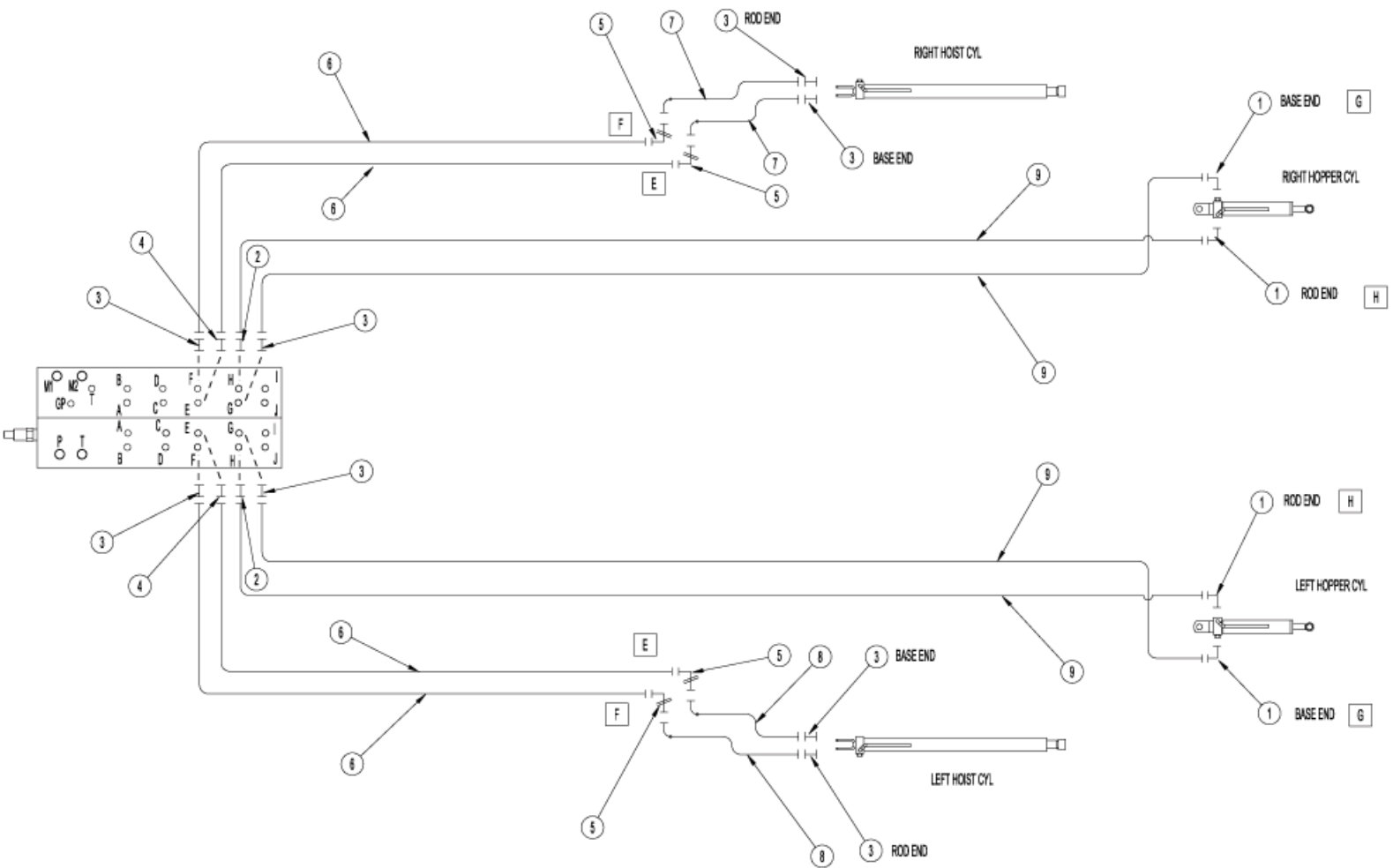


**HYDRAULICS DIAGRAM**

## HIGH LIFT 4600 XL HYDRAULICS REFERENCE

<u>ITEM</u>	<u>QTY</u>	<u>PART NO</u>	<u>DESCRIPTION</u>
1	4	P261350	FITTING 6MJ 6MB 90
2	2	P276103	FITTING 6MJ 6MB W/ .062 ORIFICE
3	8	P276101	FITTING 6MJ 6MB
4	2	P276104	FITTING 6MJ 6MB W/ .110 ORIFICE
5	4	P265410	FITTING 6MJ 6MJ BULKHEAD 90
6	4	P283136	HOSE -6 X 136" 6FJ 6FJ
7	2	P283518	HOSE -6 X 15" 6FJ 6FJ 90
8	2	P283026	HOSE -6 X 26" 6FJ 6FJ 90
9	4	P283256	HOSE -6 X 256" 6FJ 6FJ

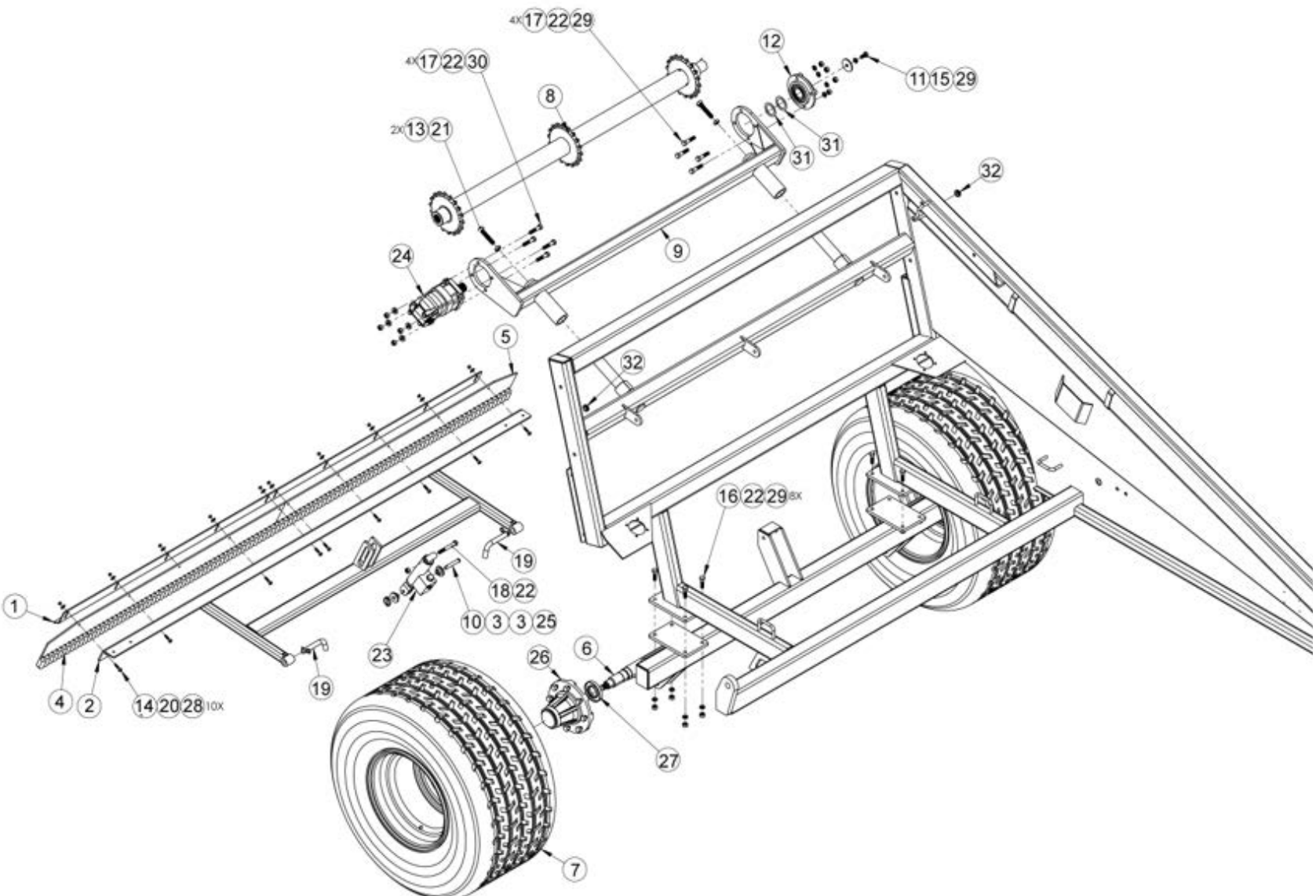
# HIGH LIFT (4600XL) HYDRAULICS DIAGRAM



# WHEEL ASSEMBLY AND GROOMER REFERENCE

<u>ITEM NO.</u>	<u>QTY.</u>	<u>PART NO.</u>	<u>DESCRIPTION</u>
1	1	450080	GROOMER BACKING BAR
2	1	450087	GROOMER BAR WLD
3	2	450183	BUSHING, GROOMER TENSION
4	1	450278	COMB, GROOMER RIGHT 4500
5	1	450279	COMB, GROOMER LEFT4500
6	1	480022	AXLE WELDMENT 4800
7	2	480070	TIRE & RIM ASM: AW708
8	1	460021	SHAFT WLD, REAR CONV
9	1	480178	MT, REAR SHAFT 4800
10	1	CP0013	PIN, CLEVIS MOD 1/2 X 3
11	1	M5462	3/16 X 1/2 ID X 2-1/4 OD WASHER
12	1	P003175	BEARING, IPTCI UCFCX09-28 FLANGE
13	2	P099012	5/8-11 X 3 FULL THD HEX BOLT
14	10	P100505	5/16-18 X 1-1/4" HEX BOLT
15	1	P100804	1/2-13 X 1" HEX BOLT
16	8	P100807	1/2-13 X 1-3/4" HEX BOLT
17	8	P100809	1/2-13 X 2-1/4 HEX BOLT
18	1	P100815	BOLT: HEX, 1/2-13 NC X 3 3/4" GR.5
19	2	P121200	BENT HITCH PIN 3/4" X 3-1/2"
20	10	P155350	NUT: HEX, 5/16 TOP-LOCK
21	2	P155800	5/8-11 HEX JAM NUT
22	17	P155850	NUT: HEX, 1/2" TOP-LOCK
23	1	P259160	CYLINDER: 1-1/2B X 4S W/CAV CH
24	1	P353600	MOTOR: 4000 COMPACT 169-0133-001
25	1	P622604	PIN, LYNCH 3/16 X 1-1/4
26	2	P764400	HUB ASSY, 8 BOLT
27	2	P764404	SEAL, GREASE 2 ID 3.62 OD
28	10	P850105	5/16" FLAT WASHER
29	13	P851108	1/2" LOCK WASHER
30	4	P852608	1/2" HARD WASHER
31	2	P855525	BUSHING: MACH 18GA X 1-3/4
32	2	P297625	GROMMET: 5/8" BORE

# WHEEL ASSEMBLY AND GROOMER DIAGRAM

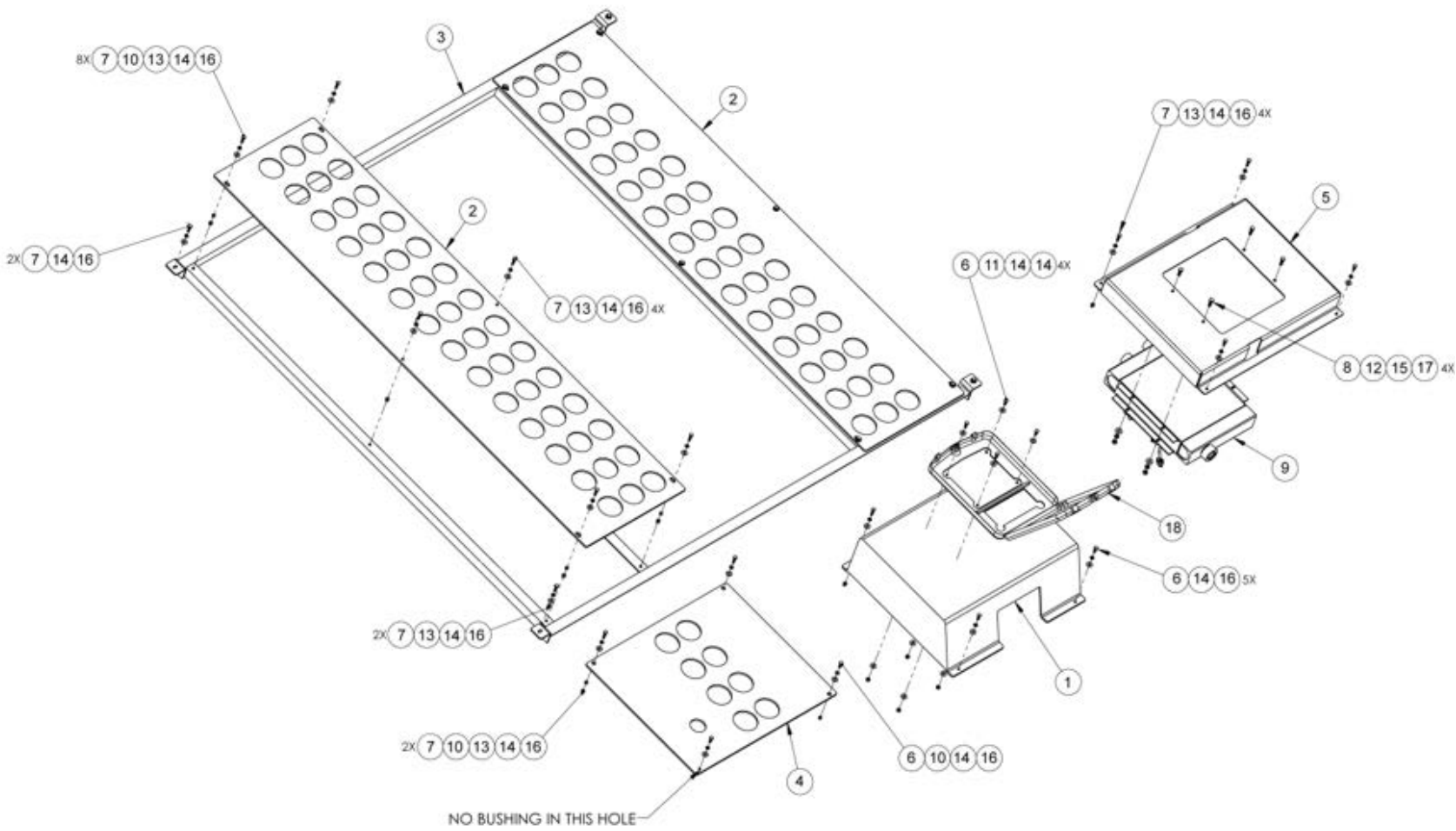


## SHIELDS REFERENCE

<u>ITEM</u>	<u>QTY</u>	<u>PART NO</u>	<u>DESCRIPTION</u>
1	1	470225	SHIELD, VALVE COVER
2	2	470228	SHIELD, CONVEYOR
3	1	480151	FRAME, CONVEYOR COVER
4	1	480152	SHIELD: CONV RIGHT FRONT
5	1	480153	COOLER MT.
6	10	P100403	BOLT: HEX, 1/4"NC X 3/4" GR5 ZN
7	22	P100404	BOLT: HEX, 1/4"NC X 1"GR5 ZN
8	4	P100504	BOLT: HEX, 5/16"NC X 1 1/4"GR5 ZN
9	1	P117300	COOLER, HYD OIL AKG DC16-12
10	11	P126900	METAL BRONZE BEARING 1/4 X 3/8
11	4	P155250	NUT: HEX, 1/4" TOP-LOCK
12	4	P155350	NUT: HEX, 5/16 TOP-LOCK
13	20	P160251	NUT, 1/4-20 KLIK NUT .08-.14
14	36	P850104	WASHER: FLAT ZINC-1/4"
15	4	P850105	WASHER: FLAT ZINC-5/16"
16	32	P851104	WASHER: LOCK 1/4"
17	4	P851105	WASHER: LOCK 5/16"
18	1	P999000	BOX, OWNERS MANUAL



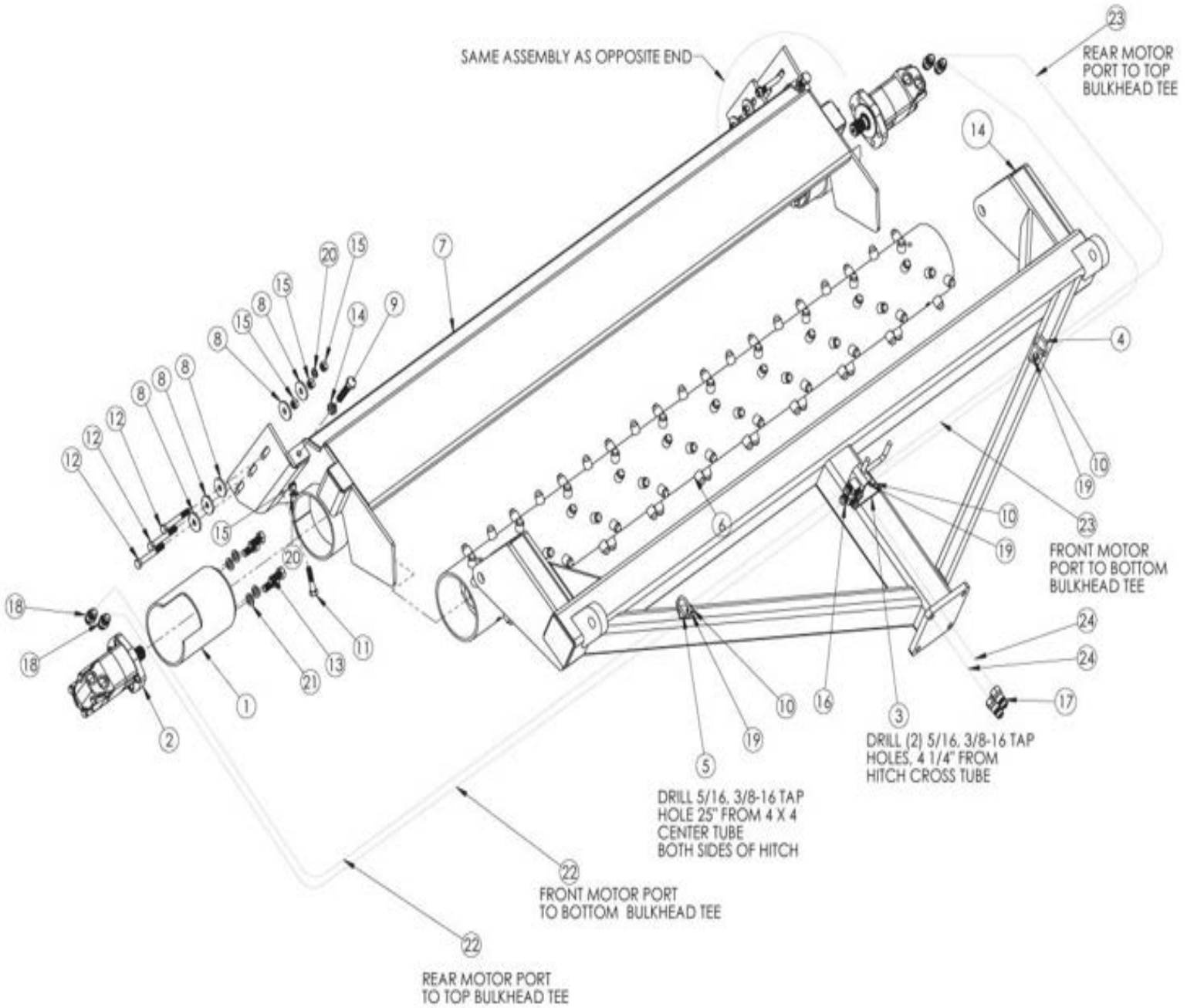
# SHIELDS DIAGRAM



## ROLLER ASSY REFERENCE

<u>ITEM NO.</u>	<u>QTY.</u>	<u>PART NO.</u>	<u>DESCRIPTION</u>
1	2	450222	MOTOR HSG, WELD
2	2	450230	MOTOR, HYD MODIFIED 2000
3	1	480118	MOUNT: BULKHEAD
4	1	480121	HOSE LOOP, LEFT
5	1	480122	HOSE LOOP, RIGHT
6	1	480183	ROLLER WELD, 72 SB
7	1	480187	FRAME, DUAL ROLLER, 4600
8	10	M5009-5	3/16" X 1/2" X 1-3/4" WASHER
9	2	P099012	5/8-11 X 3 FULL THD HEX BOLT
10	4	P100604	BOLT: HEX, 3/8" NC X 1" GR5
11	2	P100809	1/2-13 X 2-1/4 HEX BOLT
12	6	P100815	BOLT: HEX, 1/2-13 NC X 3 3/4" GR.5
13	8	P101006	BOLT: HEX, 5/8-11 NC X 1-1/2
14	2	P155800	5/8-11 HEX JAM NUT
15	8	P155850	NUT: HEX, 1/2" TOP-LOCK
16	2	P265705	FITTING: 10MJ BULK-10MJ-10MJ, TEE
17	2	P272661	COUPLER: NV12-58SAE-M
18	4	P276200	10MB-10MJ ADAPTER
19	4	P851106	3/8" LOCK WASHER
20	4	P851108	1/2" LOCK WASHER
21	8	P851110	WASHER: LOCK 5/8"
22	2	P284061	HOSE: AM-8 X 60" 10FJX 10FJX
23	2	P284068	HOSE: AM-8 X 68" 10FJX-10FJX
24	2	P285120	HOSE: AM-10 X 120" 10MB-10FJX

# ROLLER ASSY DIAGRAM



# MANIFOLD WIRING DIAGRAM

## MANIFOLD WIRING CONNECTIONS

