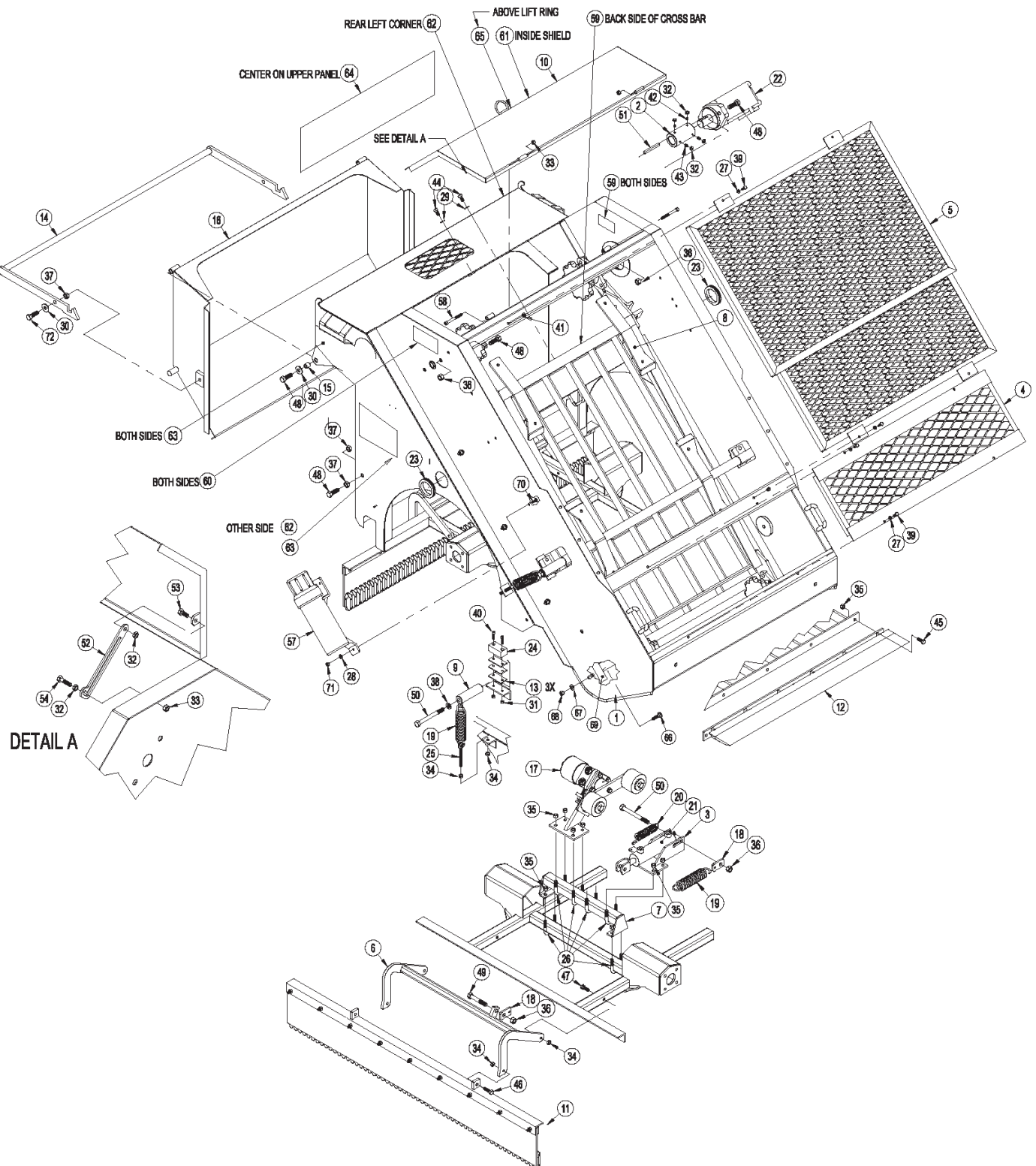


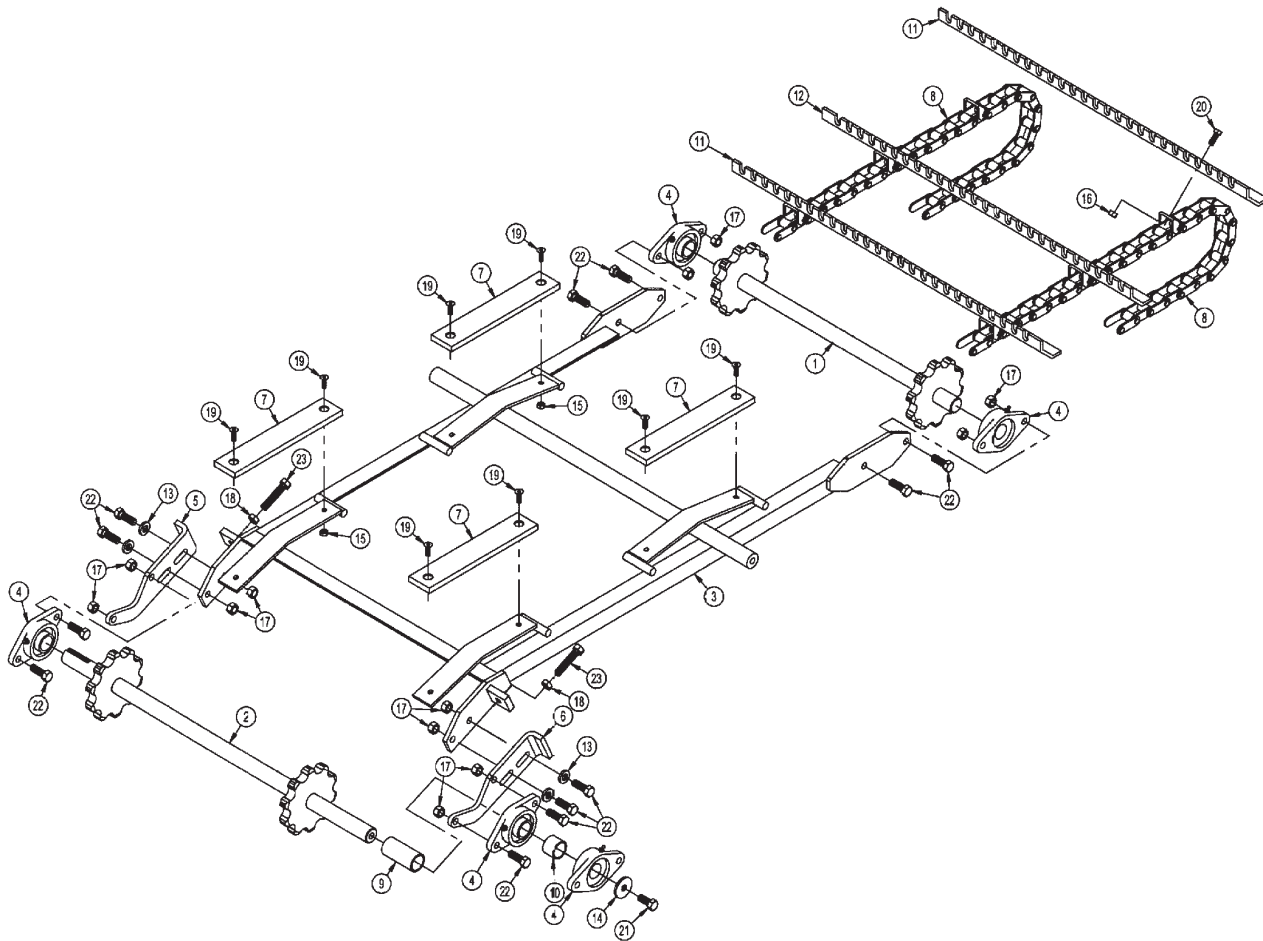
GENERAL ASSEMBLY



GENERAL ASSEMBLY

<u>Item</u>	<u>Qty</u>	<u>Part ID</u>	<u>Part Description</u>	<u>Item</u>	<u>Qty</u>	<u>Part ID</u>	<u>Part Description</u>
1	1	M30173	WELDMENT: MAIN FRAME	55	1	M30184	SCREEN: WOVEN, 1/2"
2	1	M30022	COUPLER: CONVEYOR SHAFT	56	1	M30185	SCREEN: WOVEN, 3/4"
3	1	M30023	MOUNT: CYLINDER, REAR	57	1	P136000	TUBE: MANUAL
4	1	M30047	SHIELD: FRONT, LOWER	58	2	P110512	SCREW: CAP, SCKT HD, 5/16"X3"
5	1	950002	SHIELD: FRONT, UPPER	59	3	P975107	DECAL: DANGER SHLD MISSING
6	1	M30067	FRAME: LIFT	60	2	P977910	DECAL: DANGER KEEP CLEAR
7	1	M30110	BRACKET: CONVEYOR RISER	61	1	P977900	DECAL: WARNING, GUARDS
8	1	M30074	ASSEMBLY: CONVEYOR	62	1	P970001	DECAL: CHERR. RIGHT
9	2	M30075	CONVEYOR: HOLD DOWN	63	2	P970002	DECAL: CHERR. LEFT
10	1	M30070	SHIELD: REAR	64	1	P970003	DECAL: CHERR REAR
11	1	M30182	ASSEMBLY: DRAG	65	1	P970300	DECAL: DANGER ROTATING PT
12	1	M30172	POINT: DIGGER	66	8	P104605	BOLT: CARRIAGE, 3/8" X 1 1/4"
13	6	M30079	SPACER: BUMPER	67	8	P850106	WASHER: FLAT, 3/8"
14	1	M30080	HANDLE: HOPPER DOOR	68	8	P150601	NUT: HEX, 3/8"
15	2	M30081	BUSHING: LATCH PIVOT	69	2	M30178	SCREEN GUIDE
16	1	M30082	WELDMENT: HOPPER	70	3	P104403	BOLT: CARRIAGE, 1/4" X 3/4"
17	1	M30085	ASSEMBLY: SEPARATOR	71	3	P150400	NUT: HEX, 1/4"
18	2	M30147	HOLDER: SPRING	72	2	P100807	BOLT: HEX, 1/2" X 1 3/4"
19	3	P601500	SPRING: EXTENSION				
20	1	P604700	SPRING: EXTENSION				
21	1	P259150	CYLINDER: HYDRAULIC, 1 1/2" X 4"				
22	1	P350700	MOTOR: HYDRAULIC, CHAR-LYNN 2000				
23	2	P133060	GROMMET: RUBBER				
24	2	P605000	PAD: BUMPER				
25	2	P135101	BOLT: EYE, 3/8"				
26	6	P127204	U-BOLT: 3/8" X 1 1/2" X 2 1/4"				
27	8	P851104	WASHER: LOCK, 1/4"				
28	3	P850104	WASHER: FLAT, 1/4"				
29	2	P850105	WASHER: FLAT, 5/16"				
30	4	P850107	WASHER: FLAT, 7/16"				
31	4	P158003	NUT: NYLOCK, 1/4"				
32	6	P155300	NUT: JAM, 5/16"				
33	3	P155350	NUT: TOP LOCK, 5/16"				
34	8	P155400	NUT: JAM, 3/8"				
35	17	P155450	NUT: TOP LOCK, 3/8"				
36	6	P155850	NUT: TOP LOCK, 1/2"				
37	6	P157200	NUT: JAM, 1/2"				
38	2	P851108	WASHER: LOCK, 1/2"				
39	8	P100403	BOLT: HEX, 1/4" X 3/4"				
40	4	P110912	SCREW: CAP, SOCKET HD, 1/4"X1 1/4"				
41	4	P160251	NUT: KLIK, 1/4-20				
42	2	P108508	SCREW: SET, 5/16" X 1/2"				
43	2	P108512	SCREW: SET, 5/16" X 3/4"				
44	2	P100603	BOLT: HEX, 3/8" X 3/4"				
45	5	P100604	BOLT: HEX, 3/8" X 1"				
46	2	P100605	BOLT: HEX, 3/8" X 1 1/4"				
47	2	P100609	BOLT: HEX, 3/8" X 2 1/4"				
48	8	P100806	BOLT: HEX, 1/2" X 1 1/2"				
49	1	P100812	BOLT: HEX, 1/2" X 3"				

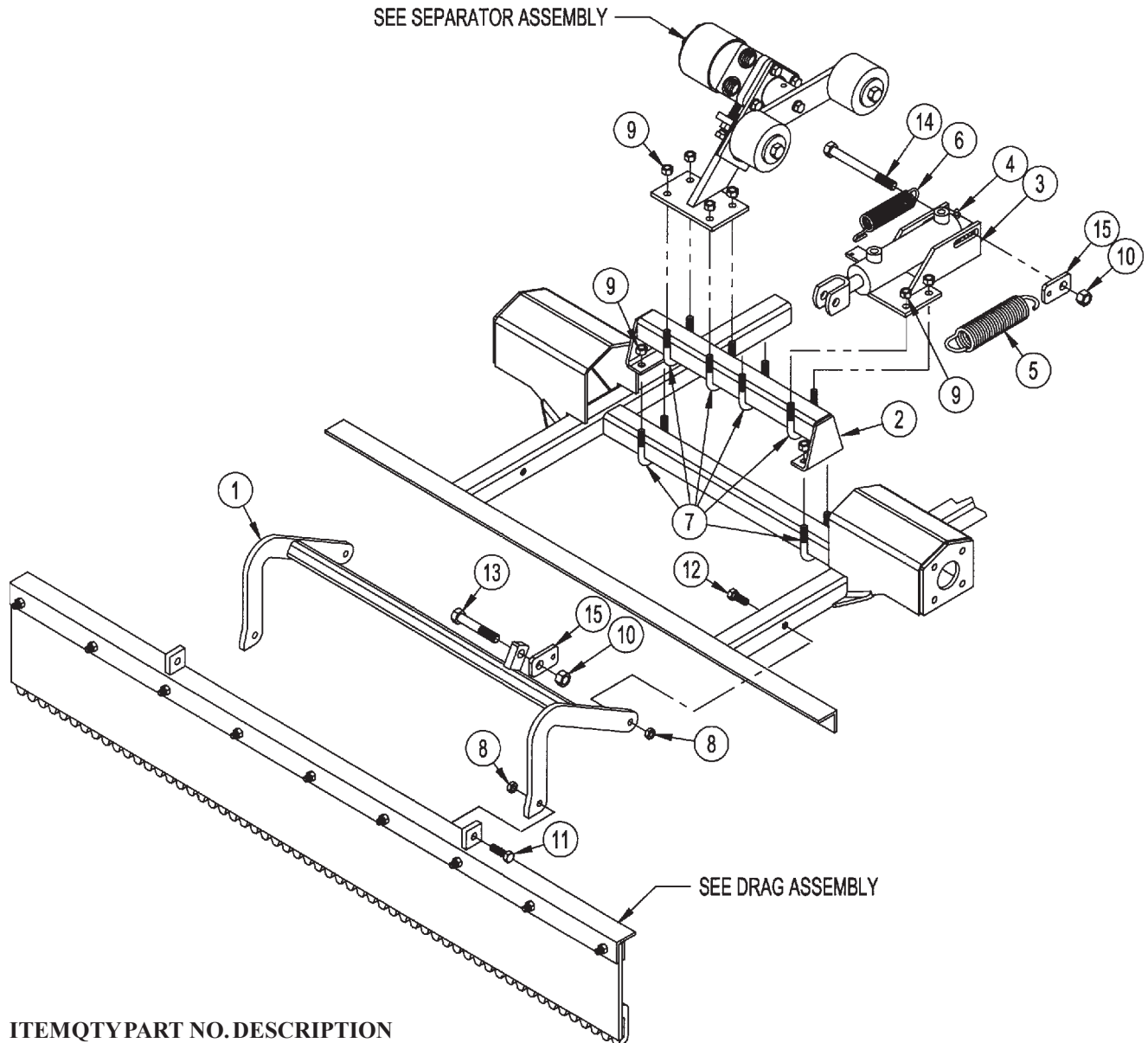
CONVEYOR ASSEMBLY



ITEM QTY PART NO. DESCRIPTION

1	1	M30015	FRONT CONVEYOR SHAFT
2	1	M30016	REAR CONVEYOR SHAFT
3	1	M30006	CONVEYOR SUPPORT WELDMENT
4	5	M30073	1-1/4" MODIFIED FLANGE BEARING
5	1	M30007	CONVEYOR ADJUSTMENT BRACKET L
6	1	M30008	CONVEYOR ADJUSTMENT BRACKET R
7	4	M30086	WEAR STRIP *REPLACED WITH 71.000271M
8	2	M30189	CONVEYOR CHAIN WELDMENT
9	1	M30088	3.219 LG CONVEYOR SHAFT SPACER
10	1	M30089	1.125 SHT CONVEYOR SHAFT SPACER
11	9	M30092	FLIGHT BLADE RIGHT HAND
12	9	M30093	FLIGHT BLADE LEFT HAND
13	4	P852608	1/2" HARD WASHER
14	1	M5009-5	3/16" X 1/2" X 1-3/4" WASHER
15	8	P155350	5/16" TOP LOCK NUT
16	36	P155450	3/8" TOP LOCK NUT
17	12	P155850	1/2" TOP LOCK NUT
18	2	P157200	1/2" JAM NUT
19	8	P103504	5/16-18 X 1.00 FLAT HD CAP SCREW
20	36	P100604	3/8" X 1" HEX BOLT
21	1	P102805	1/2" X 1-1/4" FINE THD HEX BOLT
22	12	P100806	1/2" X 1-1/2" HEX BOLT
23	2	P098810	1/2" X 2-1/2" FULL THD HEX BOLT

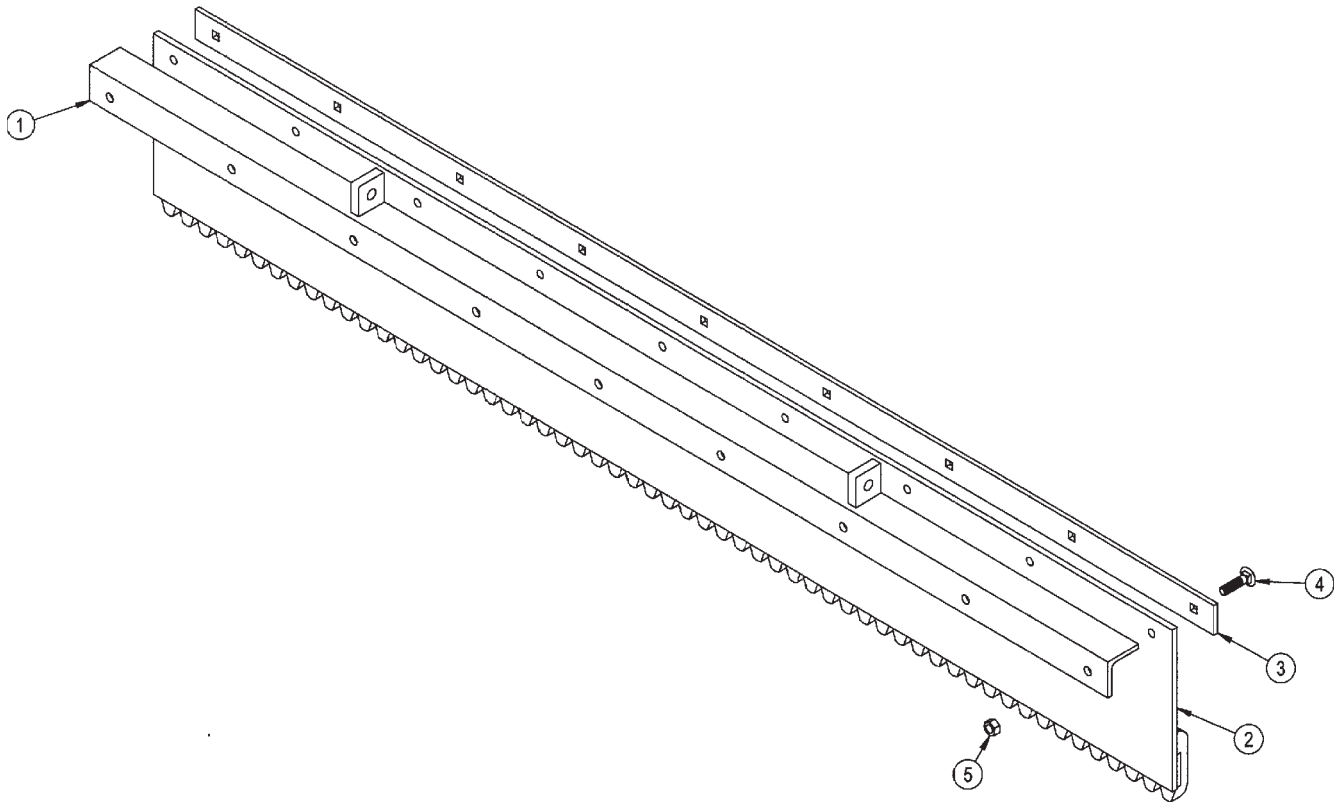
GROOMER & SEPARATOR ASSEMBLY



ITEM QTY PART NO. DESCRIPTION

1	1	M30067	LIFT FRAME
2	1	M30110	CONVEYOR RISER BRACKET
3	1	M30023	REAR CYLINDER MOUNT
4	1	P259150	HYDRAULIC CYLINDER 1-1/2" X 4"
		P259151	SEAL KIT
5	1	P601500	EXTENSION SPRING
6	1	P604700	EXTENSION SPRING
7	6	P127204	U-BOLT 3/8" X 1-1/2" X 2-1/4"
8	4	P155400	3/8" JAM NUT
9	12	P155450	3/8" TOP LOCK NUT
10	2	P155850	1/2" TOP LOCK NUT
11	2	P100605	3/8" X 1-1/4" HEX BOLT
12	2	P100609	3/8" X 2-1/4" HEX BOLT
13	1	P100812	1/2" X 3" HEX BOLT
14	1	P100820	1/2" X 5" HEX BOLT
15	2	M30147	SPRING HOLDER

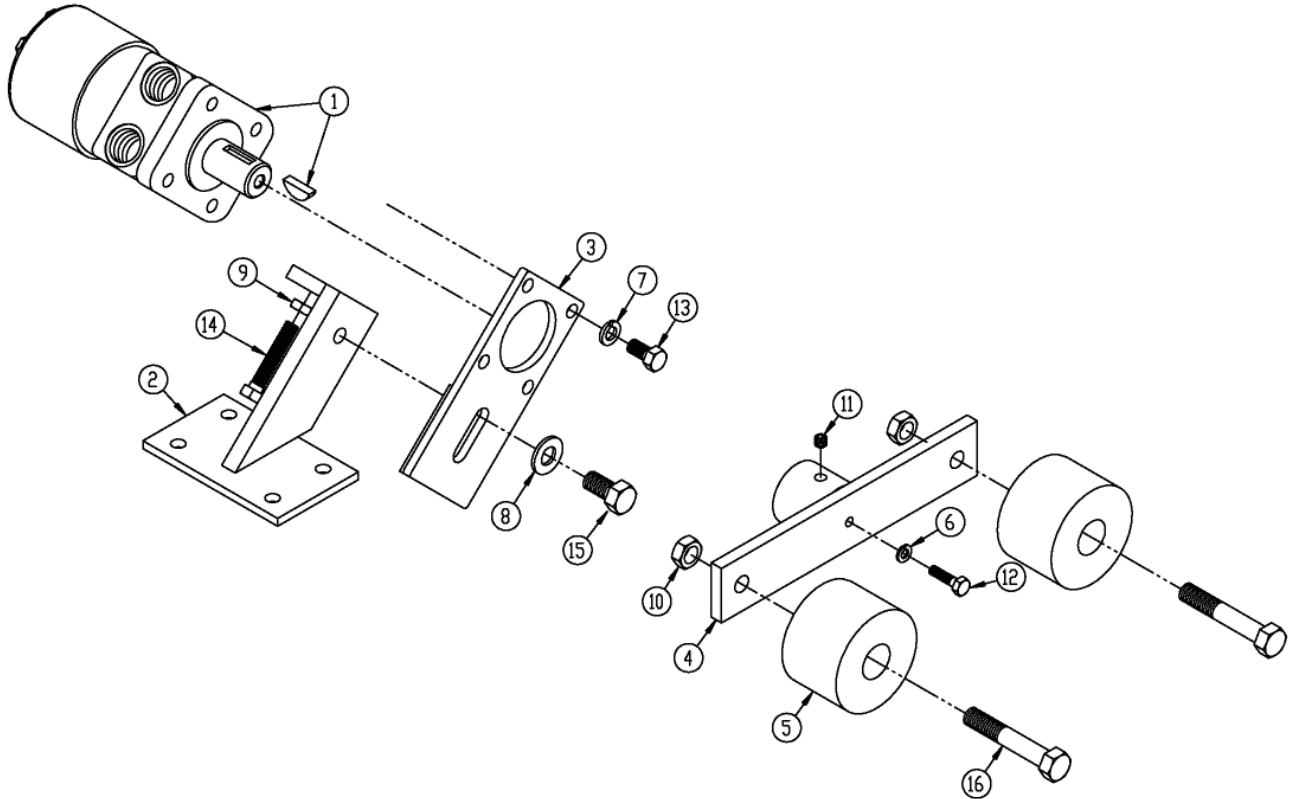
GROOMER BAR ASSEMBLY



ITEM QTY PART NO. DESCRIPTION

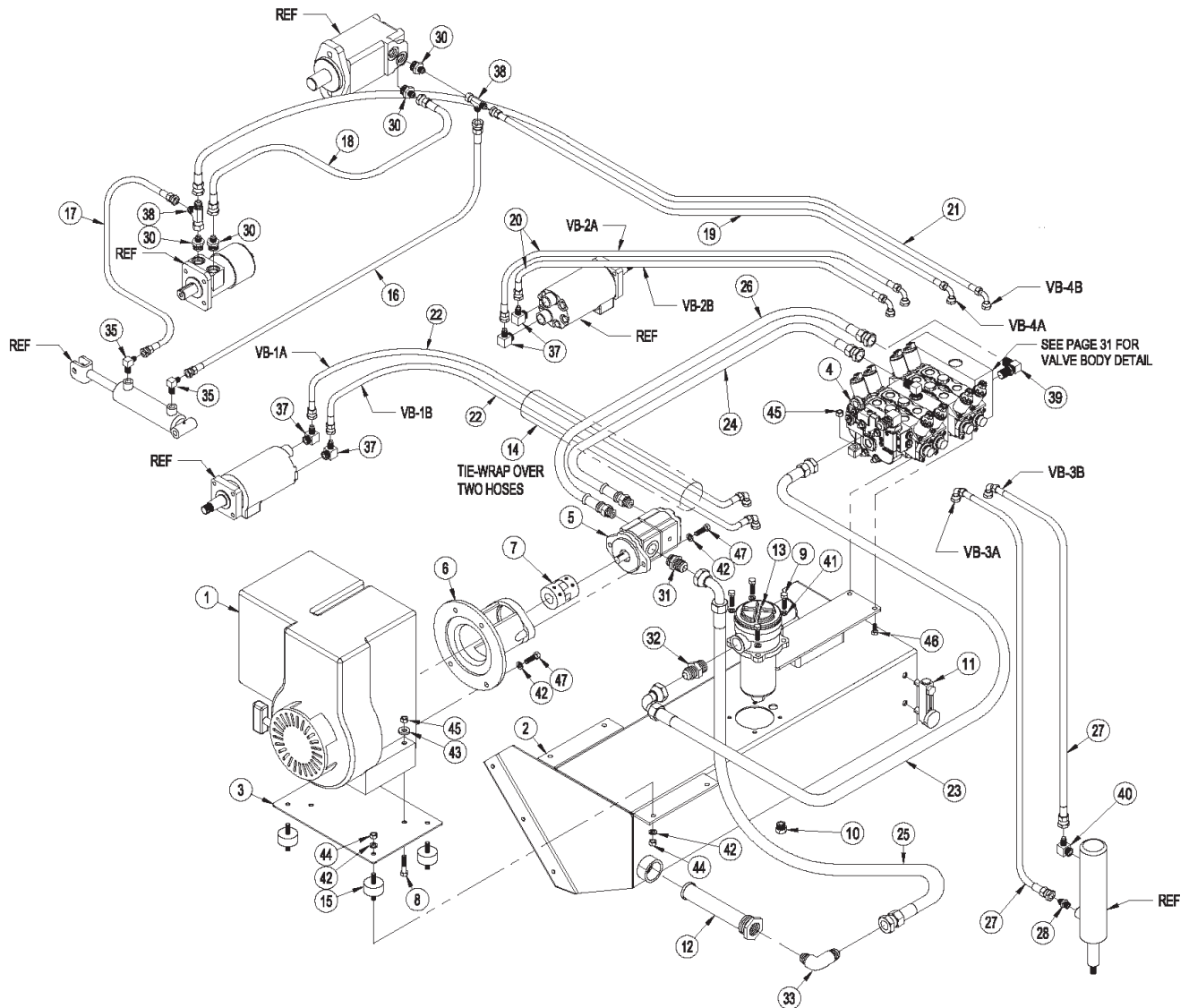
		M30182	GROOMER BAR ASSEMBLY (Includes Items 1-5)
1	1	M30181	DRAG COMB MOUNT
2	1	M30183	SNOW COMB
3	1	M30180	DRAG COMB STRAP
4	9	P104505	5/16" X 1-1/4" CARRIAGE BOLT
5	9	P155350	5/16" TOP LOCK NUT

SEPARATOR ASSEMBLY



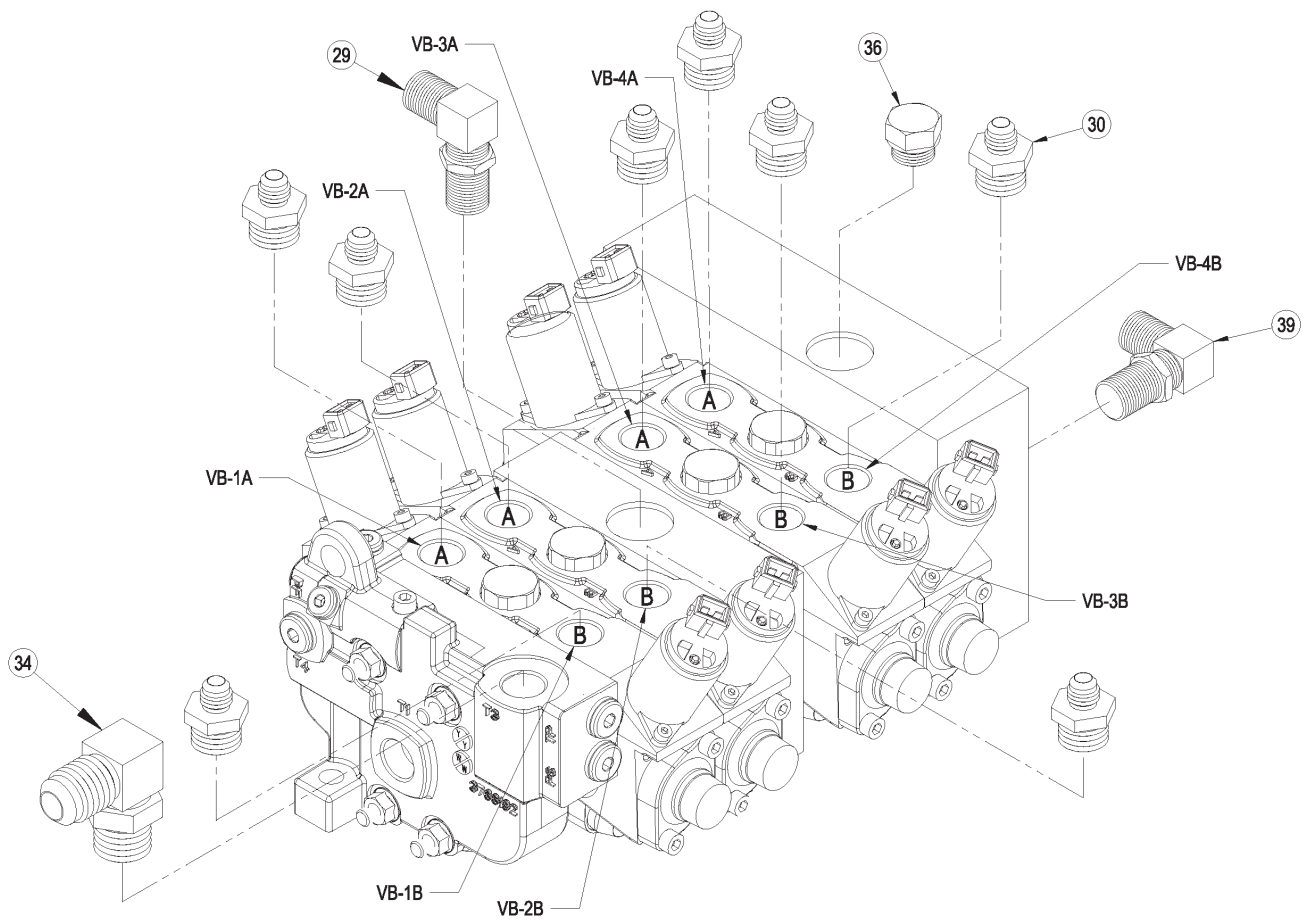
ITEM	QTY	PART#	DESCRIPTION
1	1	P350500	PARKER MOTOR TC0130FS100AAA
		P350501	SEAL KIT
2	1	M30018	SEPARATOR MOUNT
3	1	M30019	SEPARATOR MOTOR MOUNT
4	1	M30020	SEPARATOR ARM
5	2	P761100	SNUGULATOR 2500BD1X
6	1	P851104	1/4" LOCK WASHER
7	4	P851106	3/8" LOCK WASHER
8	1	P852608	1/2" HARD WASHER
9	1	P155400	3/8" JAM NUT
10	2	P157200	1/2" JAM NUT
11	1	P108505	5/16" X 5/16" SET SCREW
12	1	P100404	1/4" X 1" HEX BOLT
13	4	P100603	3/8" X 3/4" HEX BOLT
14	1	P098608	3/8" X 2" FULL THD HEX BOLT
15	1	P100804	1/2" X 1" HEX BOLT
16	2	P100812	1/2" X 3" HEX BOLT

HYDRAULIC ASSEMBLY



See part number reference on page 32.

HYDRAULIC ASSEMBLY



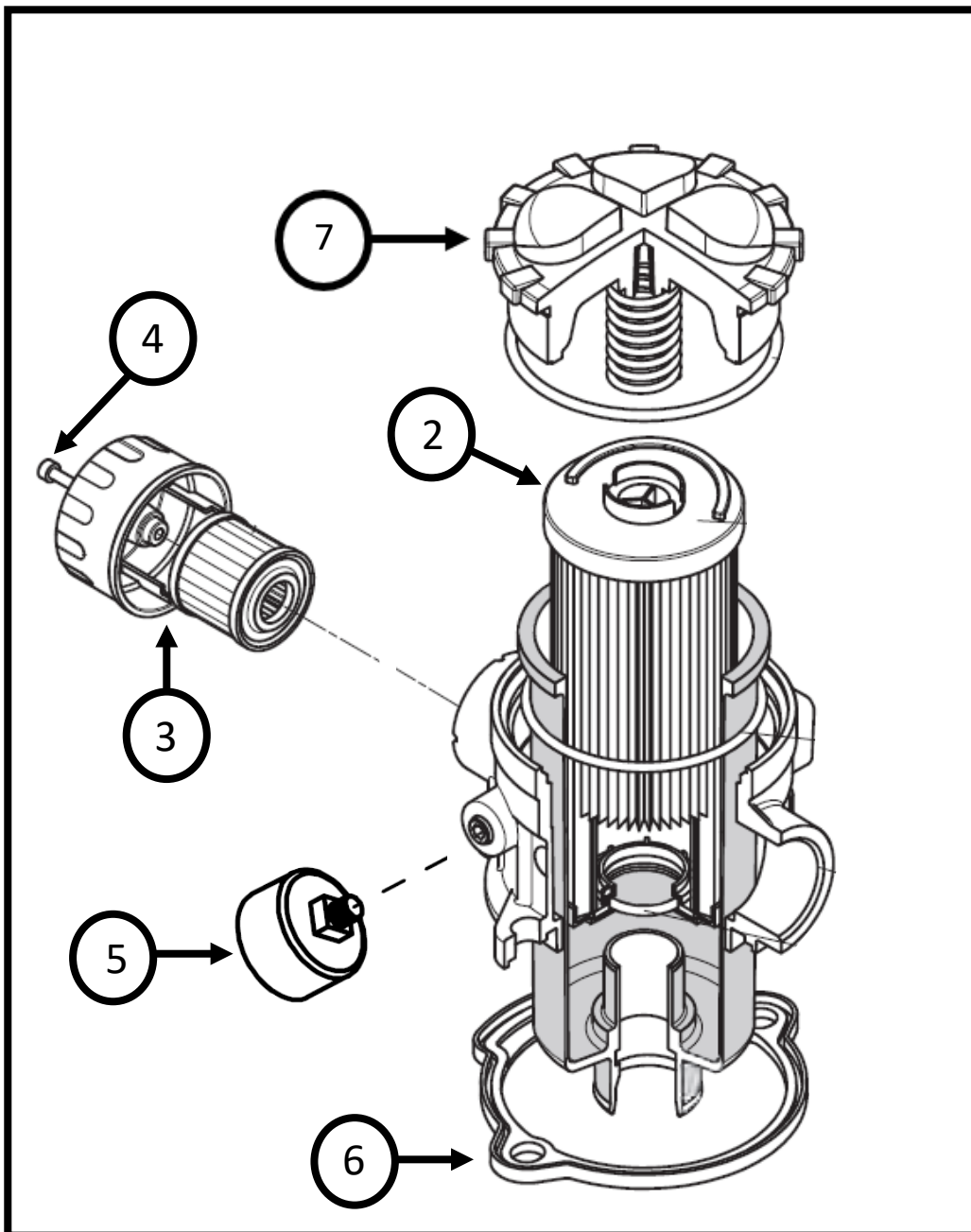
HYDRAULIC ASSEMBLY

ITEM	QTY	PART ID	PART DESCRIPTION
1	1	P370900	MOTOR: HONDA, 11 HP
2	1	950006	RESERVOIR: HYDRAULIC, 950
3	1	950009	PLATE: ENGINE, MOUNT
4	1	P375005	VALVE: 4 SECTION PARKER P70
		P375006	SOLENOID & COIL KIT #393000K286 (12 VOLT)
		P375007	SOLENOID & COIL KIT #393000K287 (24 VOLT)
5	1	P359100	PUMP: GEAR
6	1	P361100	MOUNT: PUMP, BF 4
7	1	P370020	COUPLER: DRIVE KIT
8	4	P100607	BOLT: HEX, 3/8" X 1 3/4"
9	4	P100505	BOLT: HEX, 5/16" X 1 1/4" G.5Z
10	1	P270910	PLUG: O-RING, #8
11	1	P297305	GAUGE: TEMP, SIGHT LEVEL
12	1	P610500	STRAINER: TANK
13 *	1	P371840	FILTER: MPT 100 HOUSING ASSY
14	1	R99000105	SLEEVING: CORDURA, 30" LONG
15	4	P133030	MOUNT: RUBBER
16	1	P246251	HOSE: 1/4" X 50", 4FJX 6FJX
17	1	P244160	HOSE: 1/4" X 16", 4FJX 6FJX
18	1	P248042	HOSE: 3/8" X 42", 6FJX 6FJX
19	1	P248041	HOSE: 3/8" X 41", 6FJX 6FJX90°
20	2	P248070	HOSE: 3/8" X 70", 6FJX 6FJX90°
21	1	P248066	HOSE: 3/8" X 66", 6FJX 6FJX90°
22	2	P248088	HOSE: 3/8" X 88", 6FJX 6FJX90°
23	1	P255994	HOSE: 3/4" X 24", 12FJX 12FJX90°
24	1	P251024	HOSE: 1/2" X 24", 8MB 8FJX
25	1	P255971	HOSE: 3/4" X 21", SUCTION, 12FJX 12FJX90°
26	1	P251636	HOSE: 1/2" X 36", 8MB 8FJX
27	2	P246241	HOSE: 1/4" X 41", 6FJX 6FJX90°
28	1	P276101	ADAPTER: 6MB 6MJ
29	1	P261010	ADAPTER: 8MB 8MJ90°
30	12	P276215	ADAPTER: 10MB 6MJ
31	1	P276450	ADAPTER: 12MB 12MJ
32	1	P277100	FITTING: 12MJ 16MB
33	1	P268850	FITTING: ELBOW, 16MP 12MJ90°
34	1	P276470	ELBOW: 10MB 12MJ90°
35	2	P261410	ELBOW: 4MP 4MJ90°
36	1	P270920	PLUG: 10MB
37	4	P261530	ELBOW: 8MB 6MJ90°
38	2	P265550	TEE: 6FJX 6MJ 6MJ
39	1	P261610	FITTING: 8MJ 10MB90°
40	1	P261350	FITTING: 6MJ 6MB90°
41	4	P850104	WASHER: FLAT ZINC, 1/4"
42	14	P851106	WASHER: LOCK, 3/8"
43	4	P850806	WASHER: FLAT, 3/8", SAE GR8
44	8	P150600	NUT: HEX, 3/8"
45	7	P155450	NUT: TOP LOCK, 3/8"
46	3	P100606	BOLT: HEX, 3/8" X 1 1/2"GR5Z
47	6	P100605	BOLT: HEX, 3/8" X 1 1/4"

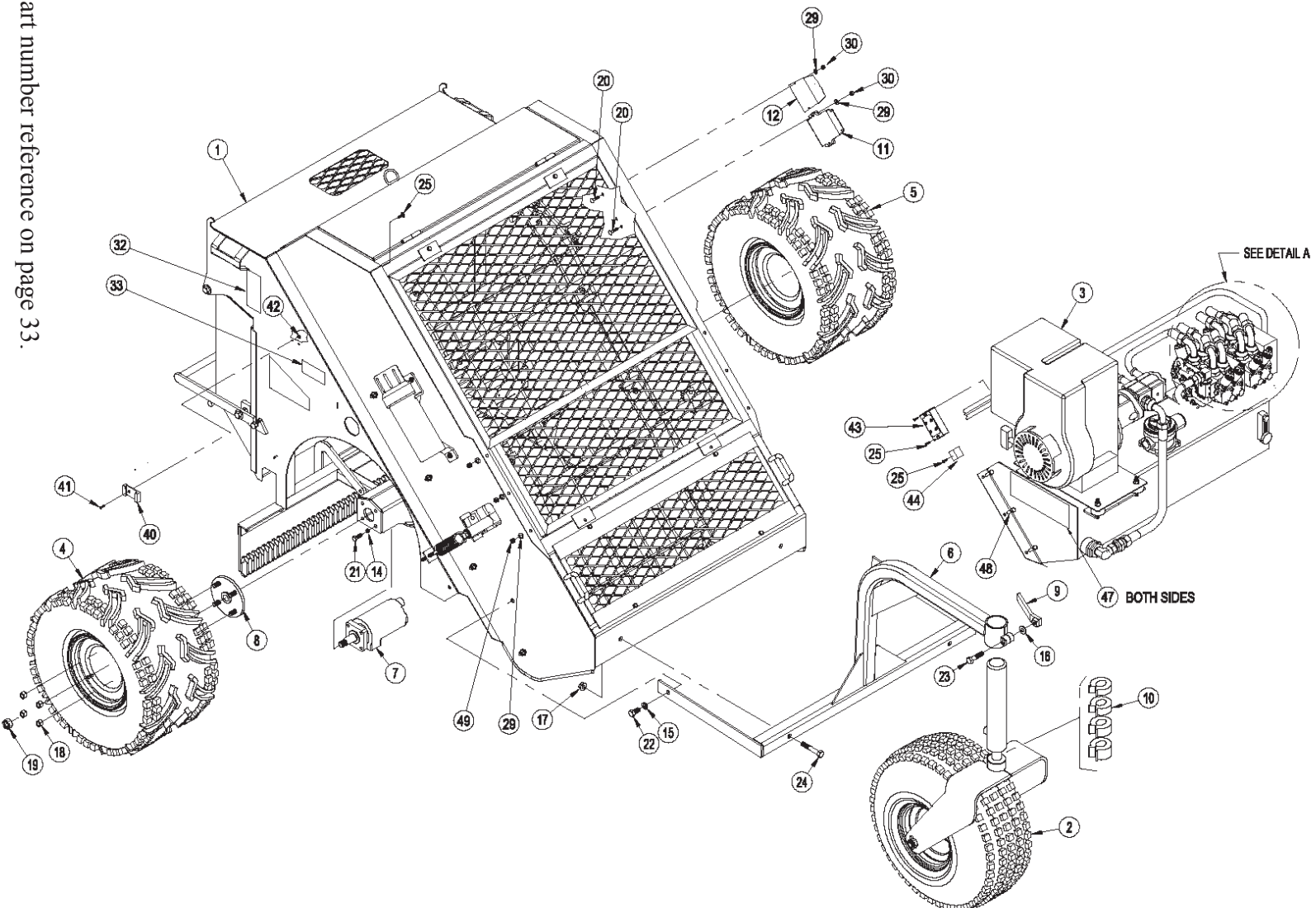
71.P371841 REPLACEMENT HYDRAULIC FILTER ONLY

HYDRAULIC FILTER HOUSING

- 1) 71.P371840 Complete filter housing: includes base gasket and 10-micron filter element
- 2) 71.P371841 Filter element 10-micron
- 3) 71.P371842 Breather filter element / housing
- 4) 71.P110160 Mounting screw M4 - .7 X 25 mm socket head cap screw
- 5) 71.P297170 Filter indicator gauge
- 6) 71.P371839 Base gasket
- 7) 71.P371844 Cover with spring



DRIVE ASSEMBLY

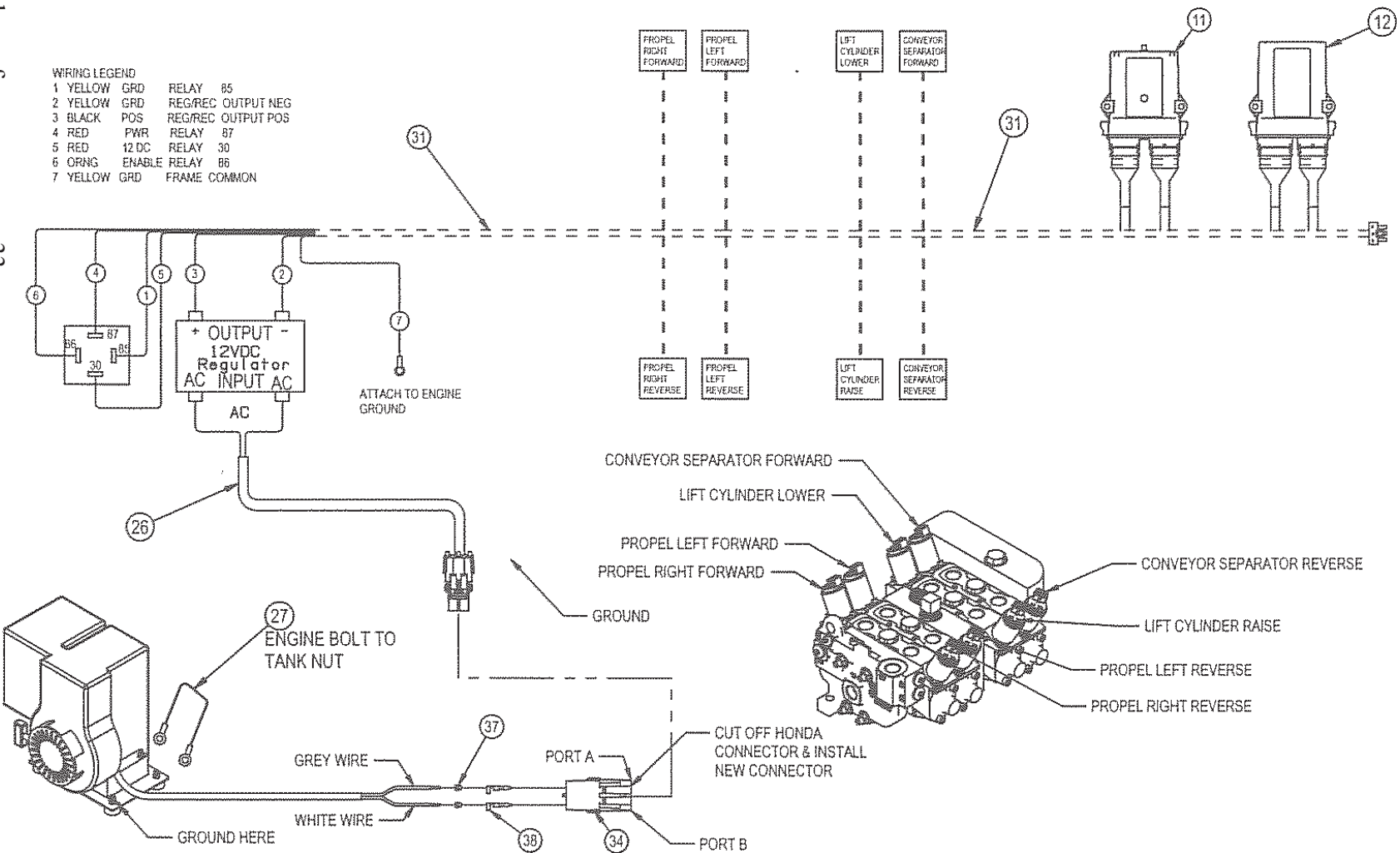


See part number reference on page 33.

DRIVE ASSEMBLY

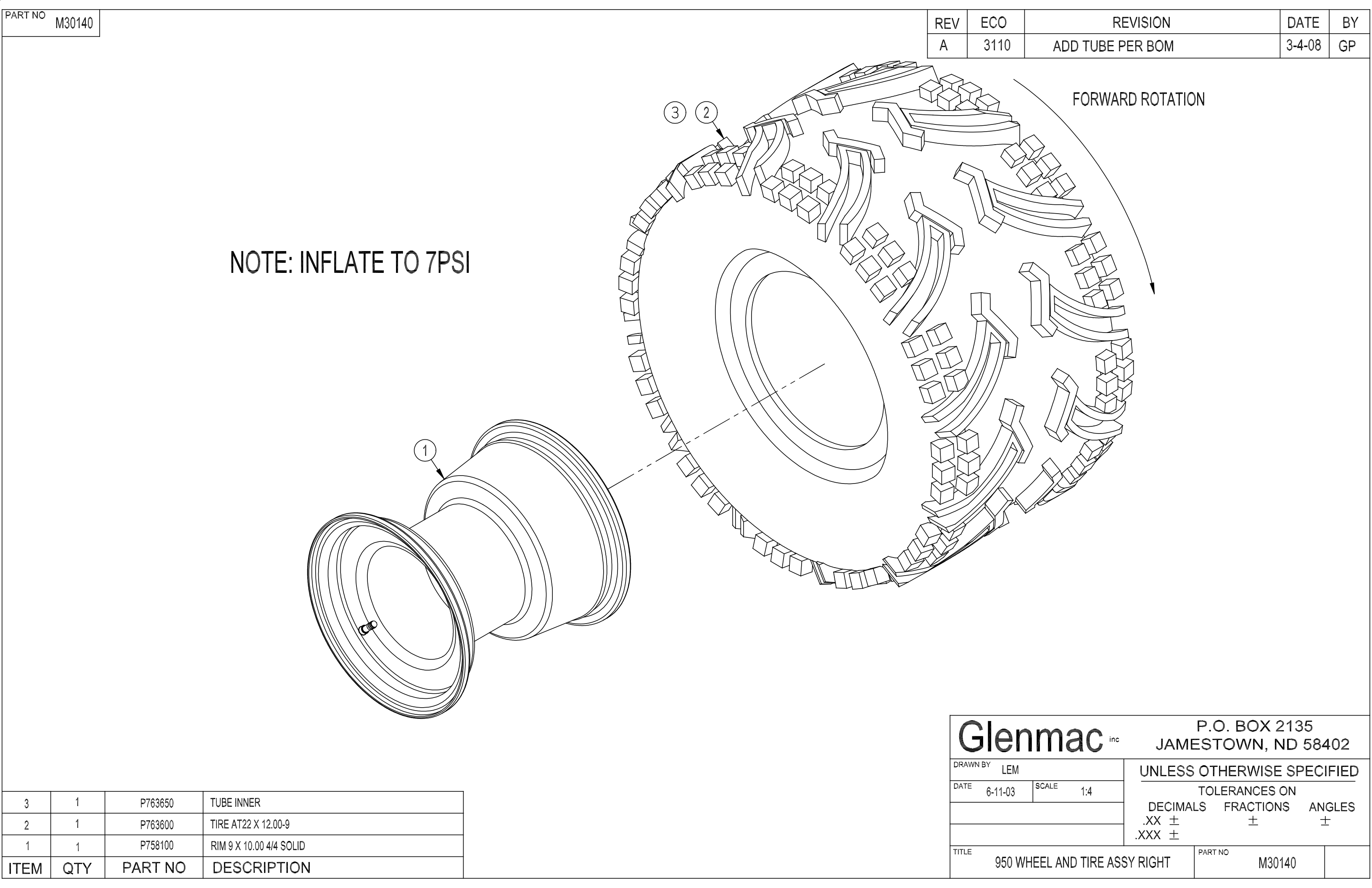
<u>ITEM</u>	<u>QTY</u>	<u>PART ID</u>	<u>PART DESCRIPTION</u>
1	1	M30000	ASSEMBLY: MAIN
2	1	M30124	ASSEMBLY: CASTER WHEEL
3	1	950015	ASSEMBLY: HYDRAULIC, 950
4	1	M30140	ASSEMBLY: WHEEL AND TIRE, RIGHT
5	1	M30141	ASSEMBLY: WHEEL AND TIRE, LEFT
6	1	M30113	MOUNT: CASTER PIVOT
7	2	P350800	MOTOR: PARKER (TEO295FR250AAA)
8	2	P758000	HUB, 4 BOLT
9	1	M6415	HANDLE: CASTER
10	1	P781000	STROKE CONTROL SET: (7/8", 1", 1 1/4", 1 1/2")
11	1	P296811	REMOTE CONTROL RECEIVER: ENRANGE
12	1	P296813	CONTROLLER: DVC5, UNIVERSAL
13	1	P002020	CHARGER: BATTERY, (AA)
14	8	P851106	WASHER: LOCK, 3/8"
15	2	P851108	WASHER: LOCK, 1/2"
16	1	P852608	WASHER: HARD, 1/2"
17	2	P155850	NUT: TOP LOCK, 1/2"
18	8	P756165	NUT: WHEEL, 1/2"-20
19	2	REF	NUT: TOP LOCK, 3/4" (REFER TO P350800)
20	4	P104405	BOLT: CARRIAGE, 1/4" X 1 1/4"
21	8	P100604	BOLT: HEX, 3/8" X 1"
22	2	P100804	BOLT: HEX, 1/2" X 1"
23	1	P102808	BOLT: HEX, FINE THREAD, 1/2" X 2"
24	2	P100812	BOLT: HEX, 1/2" X 3"
25	2	P111140	SCREW: TAPPING, #10-32 X 1/2"
26	1	950017	ASSEMBLY: CABLE, 950
27	1	950016	ASSEMBLY: GROUND WIRE
28	1	M30200	CRATE: SHIPPING
29	10	P850104	WASHER: FLAT, 1/4"
30	4	P158003	NUT: NYLOCK, 1/4"
31	1	P296810	HARNESS: WIRING, UNIVERSAL
32	1	P970102	DECAL: WARNING OPERATOR
33	1	P979501	DECAL: 950
34	1	P270314	PLUG: SHROUD, 2 CONN
35	1	P610600	HOSE: OIL DRAIN
36	1	P371670	FILTER: FUEL
37	2	P295812	SEAL: CABLE, GREEN
38	2	P295097	TERMINAL: MALE
39	1	P297310	GAUGE: TIRE PRESSURE
40	1	P296804	REMOTE CONTROL RECEIVER: BRACKET
41	2	P111103	SCREW: MACHINE, PHILLIPS HD, #8-32 X 5/8"
42	2	P158004	NUT: NYLOCK, #8-32
43	1	P298900	REGULATOR: VOLTAGE, RECTIFIER
44	1	P295051	RELAY: BOSCH SEALED
45	1	P370904	DEFLECTOR: MUFFLER
46	3	P370905	SCREW: MUFFLER DEFLECTOR
47	2	P970251	DECAL: DANGER 10 FT
48	6	P100503	BOLT: HEX, 5/16" X 3/4"
49	6	P155350	NUT: TOP LOCK, 5/16"
50	1	P296812	REMOTE CONTROL, HANDHELD (not shown)

DRIVE ASSEMBLY - WIRING DIAGRAM



See part number reference on page 33.

(958B054)



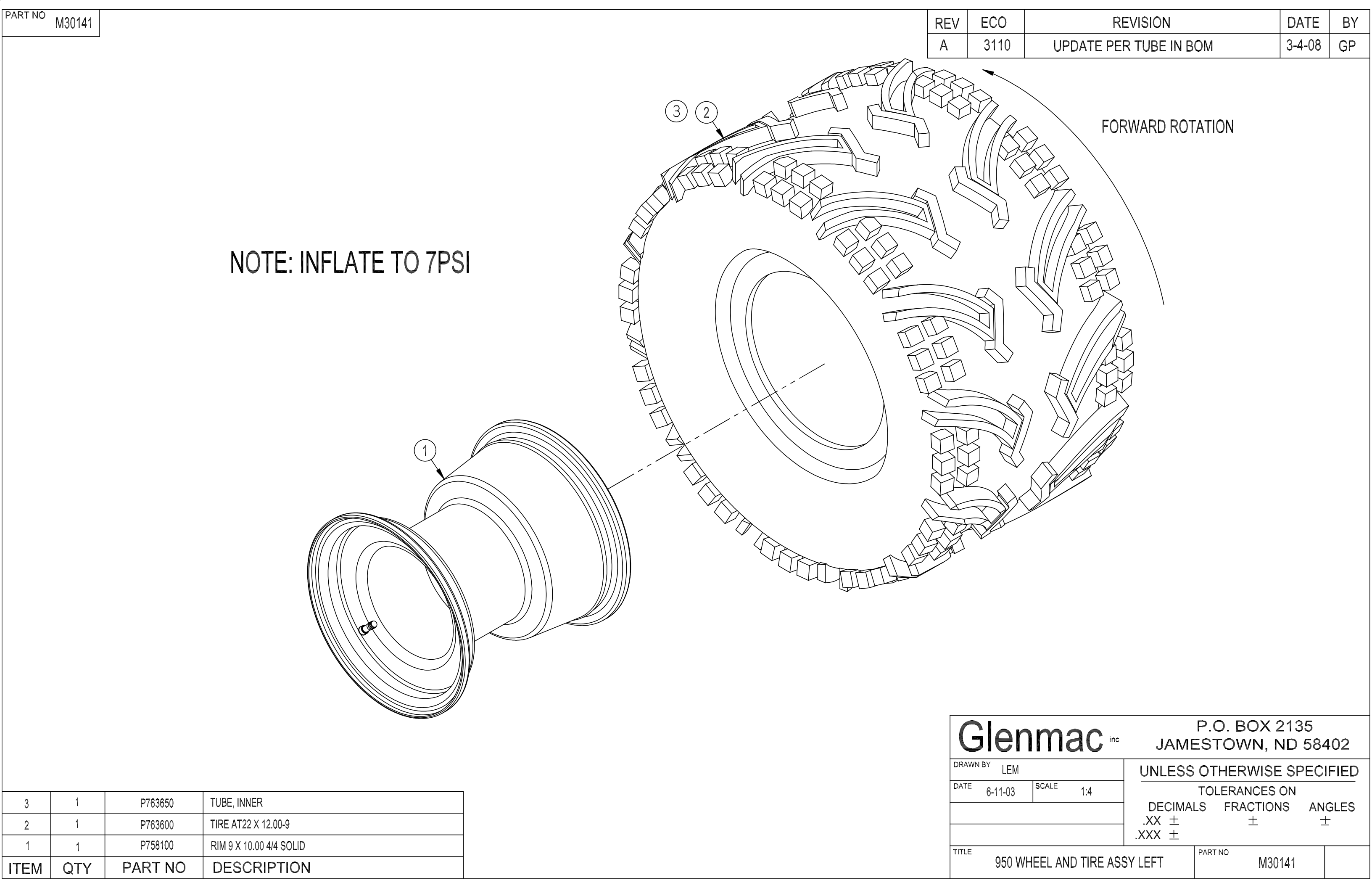
PART NO
M30140

REV	ECO	REVISION	DATE	BY
A	3110	ADD TUBE PER BOM	3-4-08	GP

NOTE: INFLATE TO 7PSI

3	1	P763650	TUBE INNER
2	1	P763600	TIRE AT22 X 12.00-9
1	1	P758100	RIM 9 X 10.00 4/4 SOLID
ITEM	QTY	PART NO	DESCRIPTION

Glenmac ^{inc}		P.O. BOX 2135 JAMESTOWN, ND 58402	
DRAWN BY LEM		UNLESS OTHERWISE SPECIFIED TOLERANCES ON DECIMALS FRACTIONS ANGLES .XX ± ± ± .XXX ±	
DATE 6-11-03	SCALE 1:4		
TITLE 950 WHEEL AND TIRE ASSY RIGHT		PART NO M30140	

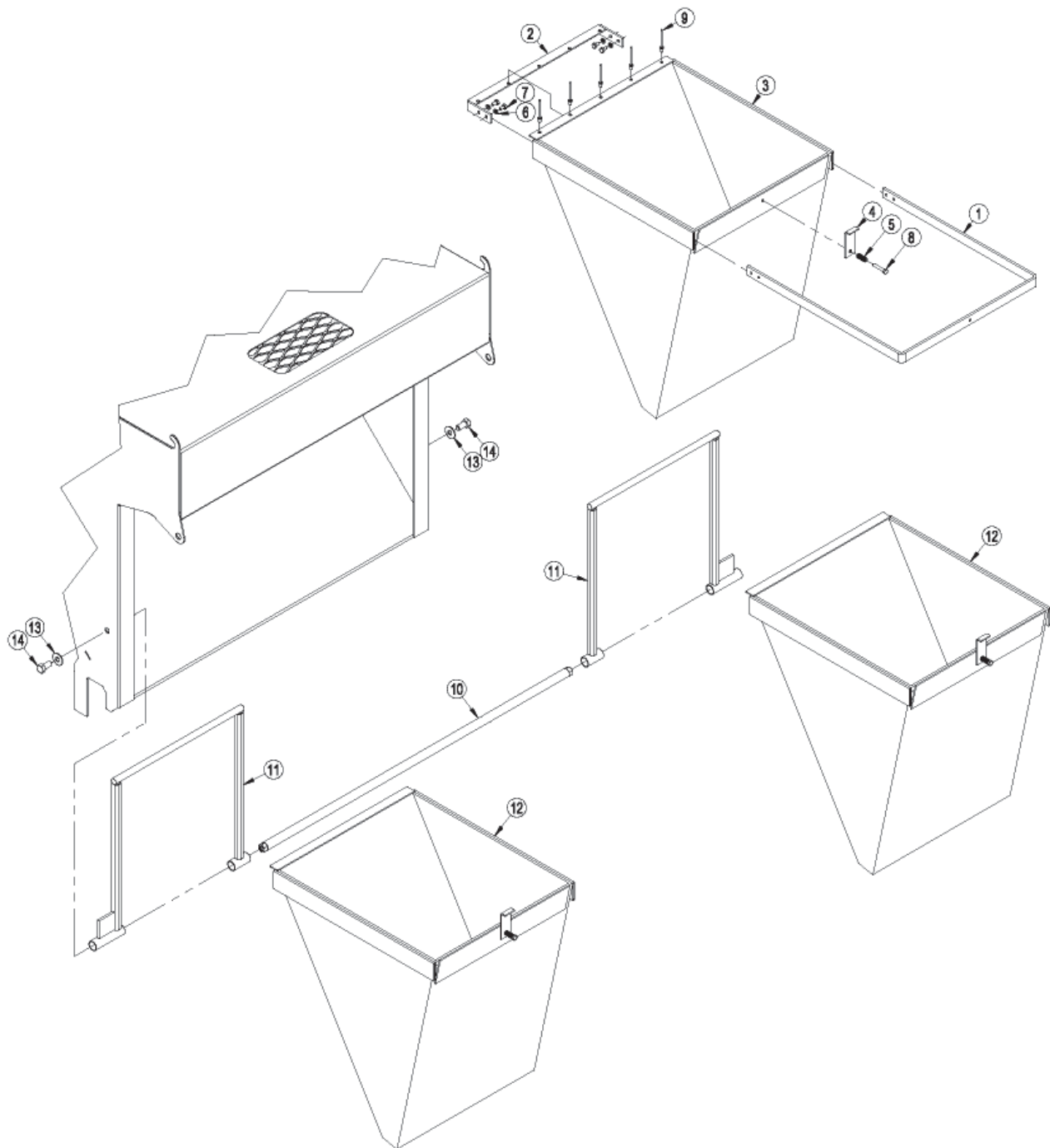


3	1	P763650	TUBE, INNER
2	1	P763600	TIRE AT22 X 12.00-9
1	1	P758100	RIM 9 X 10.00 4/4 SOLID
ITEM	QTY	PART NO	DESCRIPTION

Glenmac ^{inc}		P.O. BOX 2135 JAMESTOWN, ND 58402	
DRAWN BY LEM		UNLESS OTHERWISE SPECIFIED	
DATE 6-11-03	SCALE 1:4	TOLERANCES ON	
		DECIMALS	FRACTIONS ANGLES
		.XX ±	± ±
		.XXX ±	
TITLE 950 WHEEL AND TIRE ASSY LEFT		PART NO	M30141

OPTIONAL COLLECTION BAG ASSEMBLY

A collection bag assembly is available as an add-on option to your Model 950.

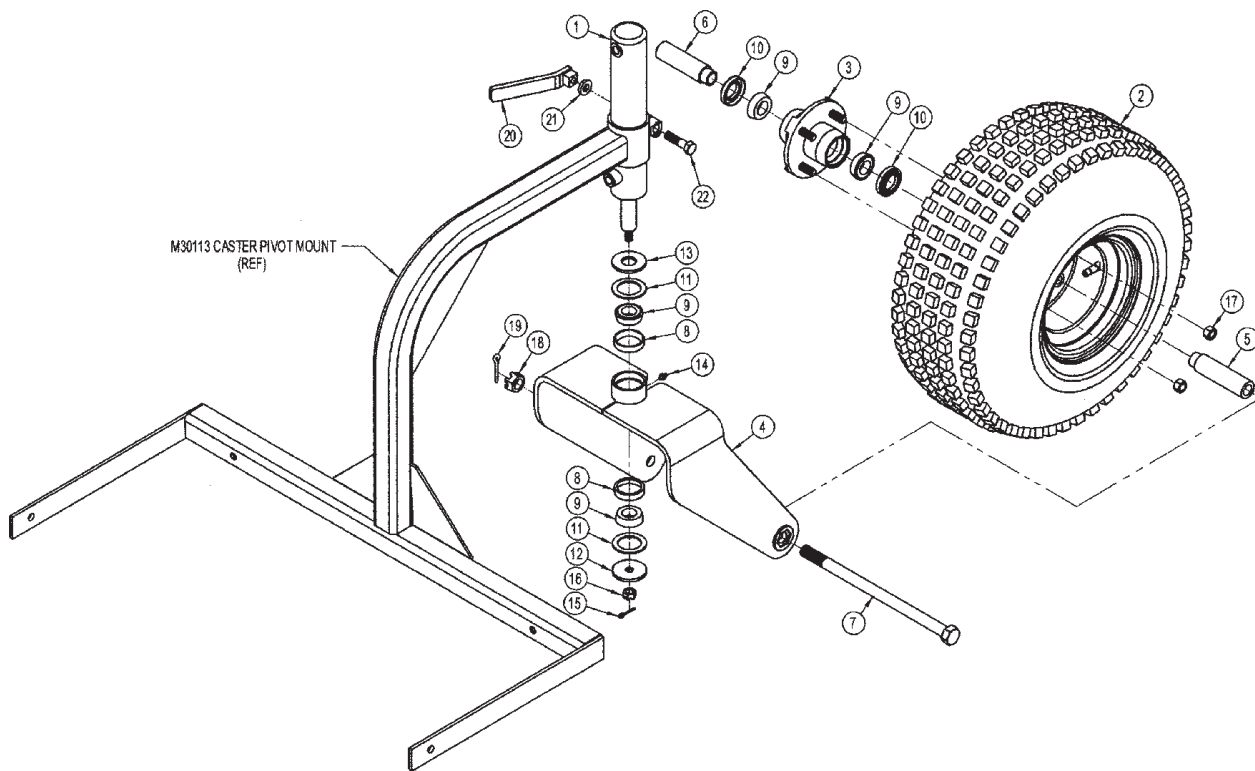


OPTIONAL COLLECTION BAG ASSEMBLY

<u>Item</u>	<u>Qty</u>	<u>Part ID</u>	<u>Description</u>
1	1	M30157	BAGGER TOP HOLDER
2	1	M30158	TOP HOLDER BRACKET
3	1	M30159	COLLECTION BAG
4	1	M30161	BAG LATCH
5	1	P601050	SPRING: COMPRESSION, .48 OD X 1"
6	4	P851104	WASHER: LOCK, 1/4"
7	4	P100402	BOLT: HEX, 1/4" X 1/2"
8	1	P100406	BOLT: HEX, 1/4" X 1 1/2"
9	5	P126272	POP RIVET: LARGE FLANGE, 1/8" X 3/8"
10	1	M30156	BAGGER CROSS BAR
11	2	M30155	BAGGER MOUNT
12	2	M30162	COLLECTION BAG ASSEMBLY
13	2	P850107	WASHER: FLAT, 7/16"
14	2	P100804	BOLT: HEX, 1/2" X 1"

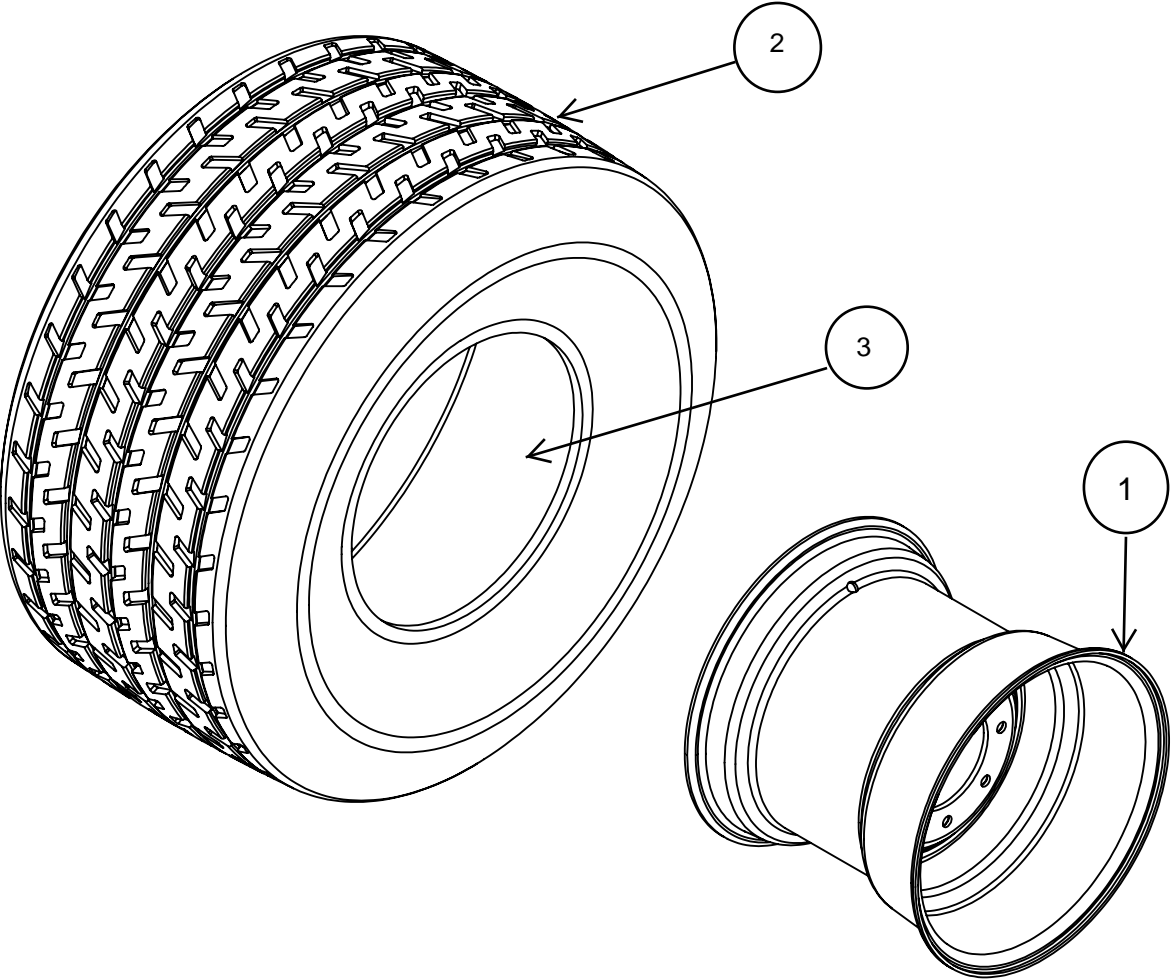
71.M30160 Complete collection bagger kit (includes items 1 - 14)

FRONT CASTER WHEEL ASSEMBLY




ITEM QTY PART NO. DESCRIPTION

1	1	P257610	HYDRAULIC CYLINDER
2	1	005360	WHEEL ASSY: KNOBBY 22 X 11-8
3	1	P756161	WHEEL HUB WITH STUDS
4	1	M30121	950 CASTER WELDMENT
5	1	M30114	AXLE SPACER LONG
6	1	M30119	AXLE SPACER SHORT
7	1	M30120	AXLE BOLT 13-1/2"
8	2	P762100	1" BEARING CUP
9	4	P762200	1" BEARING CONE
10	2	P756163	GREASE SEAL
11	2	P852300	FELT WASHER
12	1	M5462	2-1/4" OD X 17/32" ID WASHER
13	1	M5464	2-1/4" OD X 1" ID WASHER
14	1	P620200	1/4-28 STR GREASE FITTING
15	1	P116204	1/8" X 1" COTTER PIN
16	1	P158006	1/2" SLOTTED HEX NUT
17	4	P756165	1/2-20 WHEEL NUT
18	1	P158000	3/4 SLOTTED HEX NUT
19	1	P116256	5/32" X 1-1/2" COTTER PIN
20	1	M6415	CASTER WHEEL
21	1	P852608	1/2" HARD WASHER
22	1	P102808	1/2" X 2" FINE THREAD HEX BOLT



COMPLETE FRONT TIRE / WHEEL ASSEMBLY MDL 950 P/N: 005360
(KNOBBY 22 X 11 -8)

3	1	P763650	TUBE: 22 X 11 - 8
2	1	P770510	TIRE: 22 X 11 - 8
1	1	P750050	RIM: 8 X 8.50 4/4 SOLID F266
ITEM	QTY.	PART NUMBER	DESCRIPTION



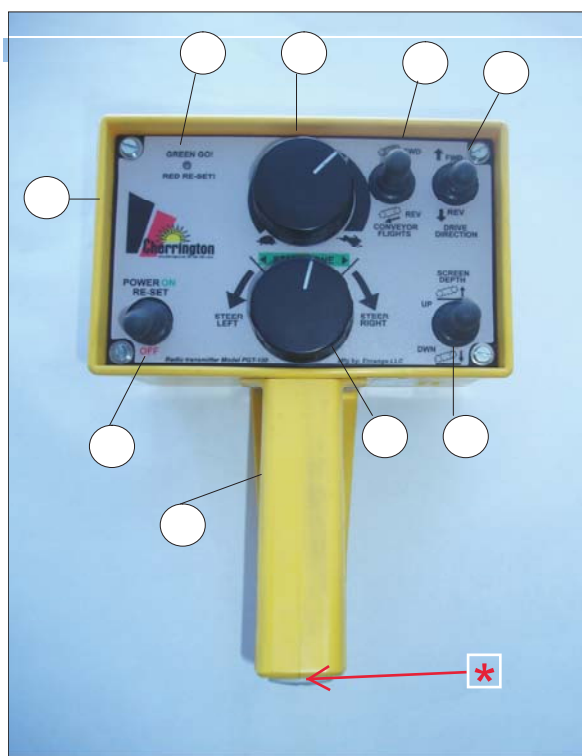
DRAWN BY		TOLERANCES ON		
DATE		DECIMALS	FRACTIONS	ANGLES
		.XX±.060	±1/32	± 1°
		.XXX±.030		
TITLE FRONT TIRE / WHEEL ASSY 950		PART NO.	005360	

ENRANGE REMOTE CONTROL: USED ON EARLY CBC MDL 950

ENRANGE HANDHELD REMOTE AND RECEIVER ARE OBSOLETE
REPAIR PARTS AND SERVICES ARE UNSUPPORTED.

IF CONTROL SYSTEM HAS FAILED: REQUIRES COMPLETE SYSTEM UPDATE.
UPDATE WITH COMPLETE CERVIS CONTROL PACKAGE P/N 71.P296842

ENRANGE (YELLOW) HANDHELD REMOTE



* ONLY REPLACEMENT ITEMS AVAILABLE

71.P002020 BATTERY CAP ONLY

71.P280952 BATTERY CAP AND BATTERY TUBE ASSY.

CERVIS (BLACK) HANDHELD REMOTE



CERVIS (BLACK) HANDHELD REMOTE
CURRENT REMOTE USED ON CBC 950