



*Model 950*

*B ~ Series*

*Beachcleaner/Sandsifter*

*Serial Numbers*

*955B001 - 957B043*

*Parts requirements are subject to change without notice and parts may be substituted by Glenmac/Harley Enterprises*

*Please refer to the latest parts price book for current parts pricing, or call (800) 437-9779, Fax (701) 251-9259, E-mail [customer\\_service@glenmac.com](mailto:customer_service@glenmac.com)*

# DECALS



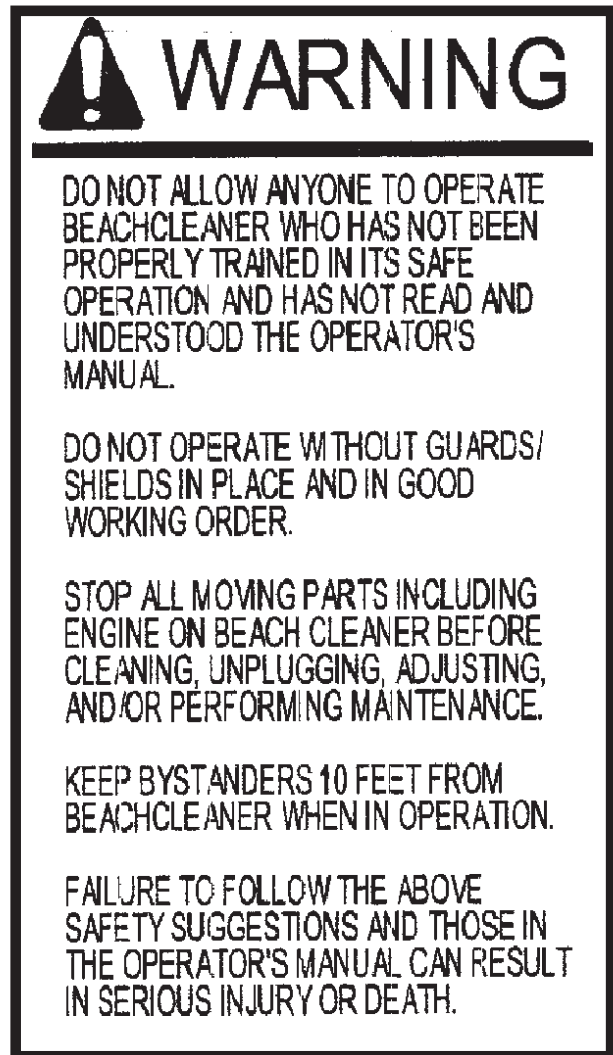
#1 P977910



#2 P975107



#3 P977900

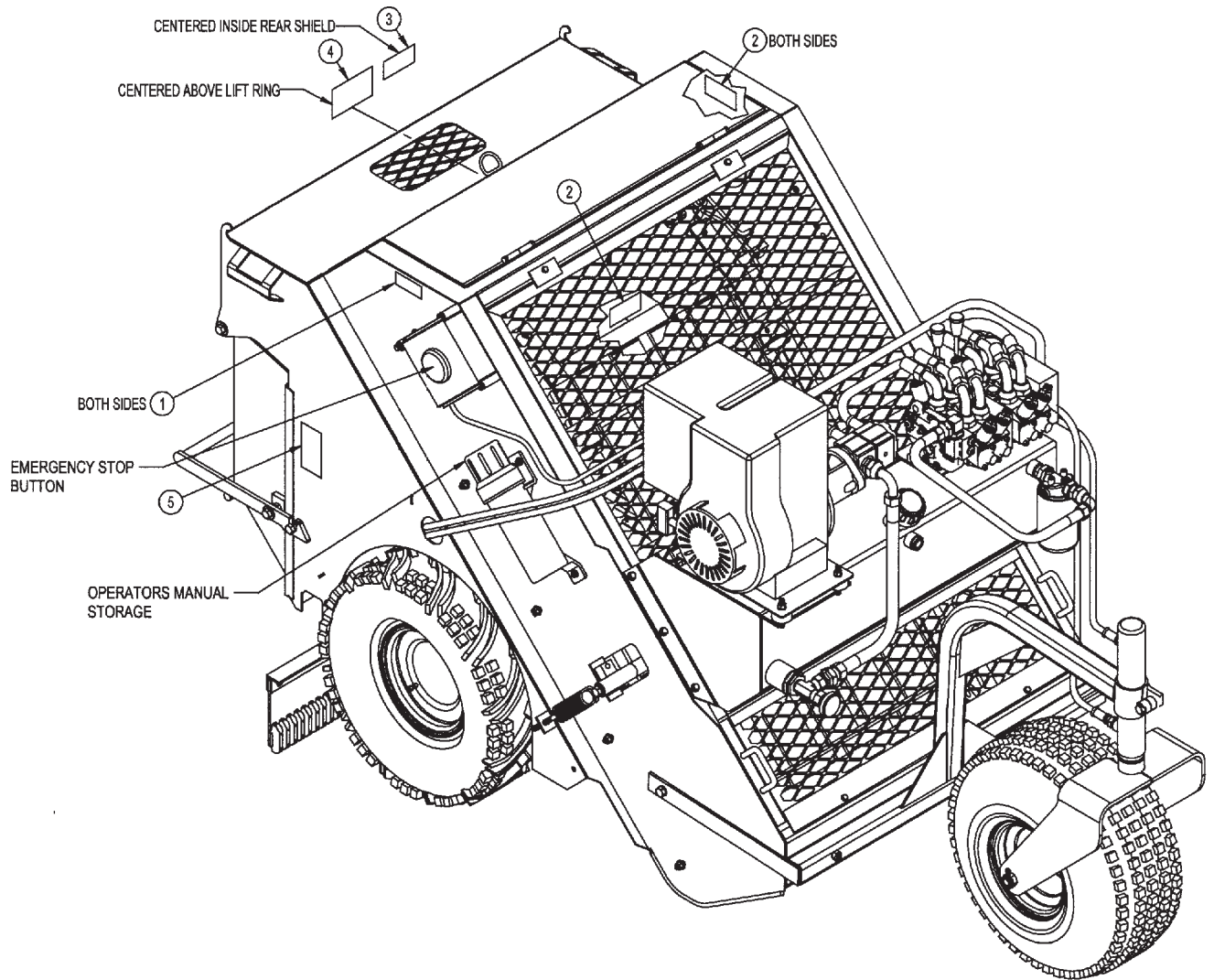


#5 P970102



#4 P970300

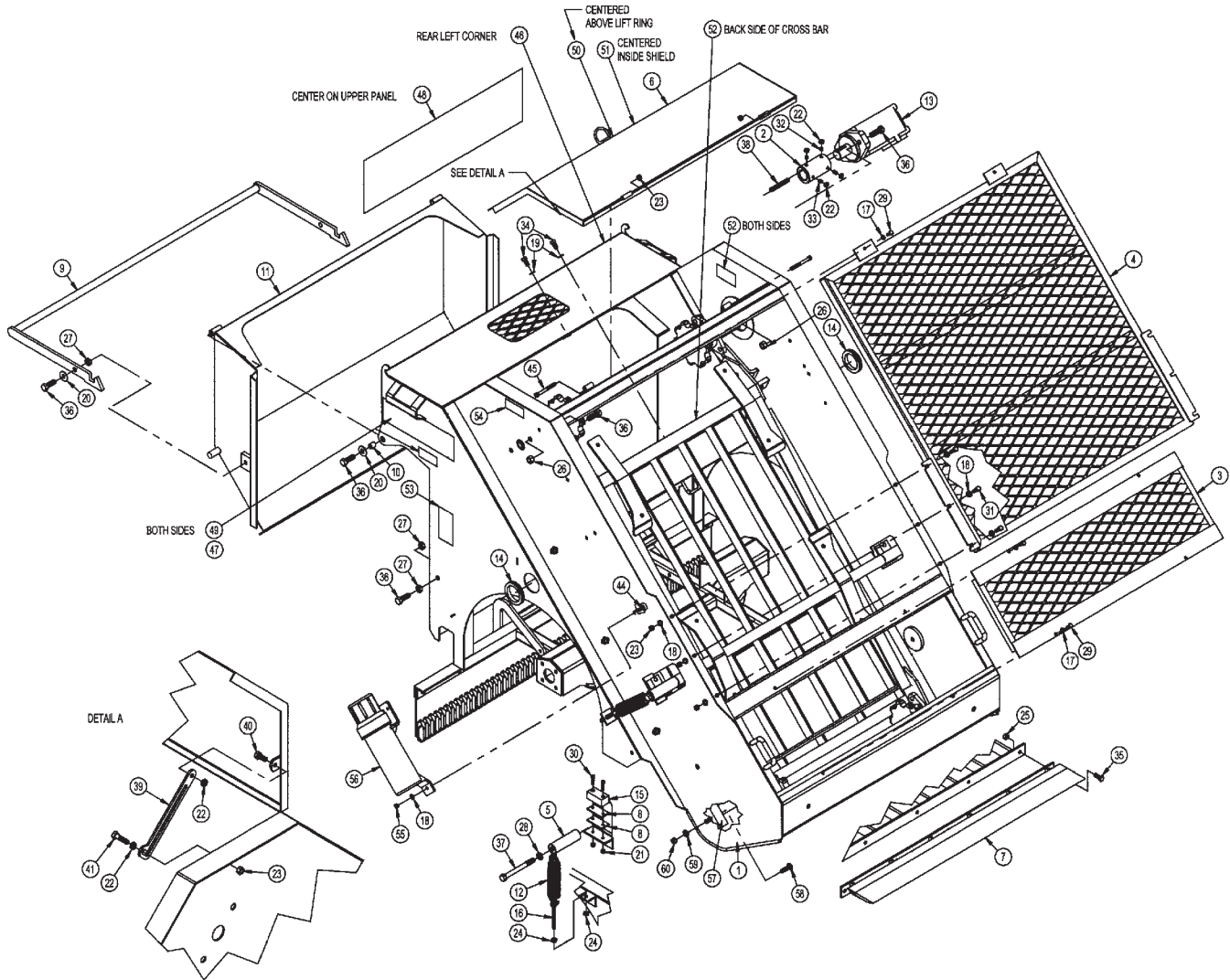
# DECALS



## ITEM QTY PART NO. DESCRIPTION

1	2	P977910	DECAL: DANGER KEEP CLEAR
2	3	P975107	DECAL: DANGER SHIELD MISSING
3	1	P977900	DECAL: WARNING GAURDS IN PLACE
4	1	P970300	DECAL: DANGER ROTATING PARTS
5	1	P970102	DECAL: WARNING OPERATOR

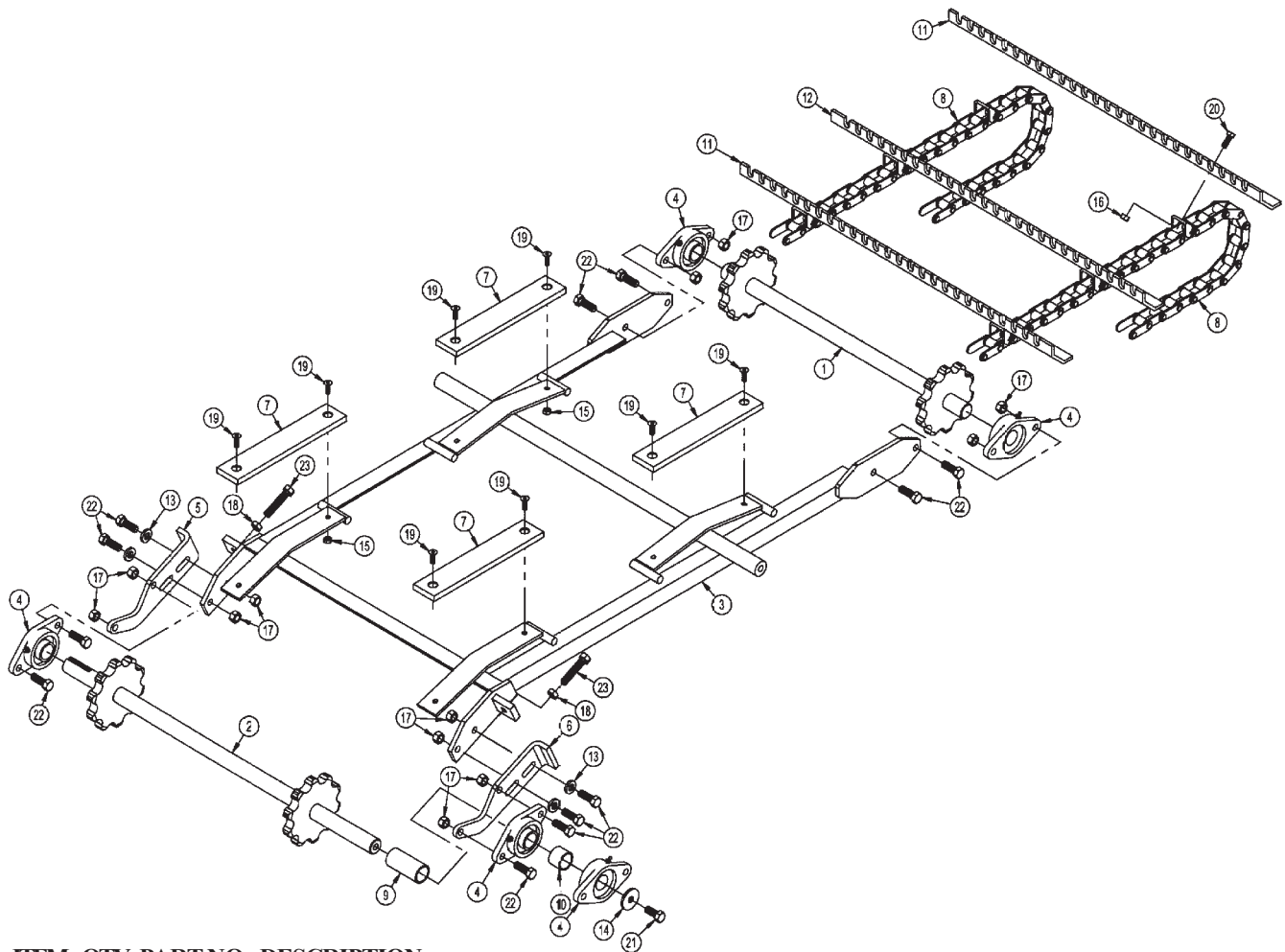
# GENERAL ASSEMBLY



# GENERAL ASSEMBLY

ITEM	QTY	PART NO.	DESCRIPTION	ITEM	QTY	PART NO.	DESCRIPTION
1	1	M30173	MAIN FRAME WELDMENT	53	3	P9750102	DECAL: WARNING OPERATOR
2	1	M30022	CONVEYOR SHAFT COUPLER	54	2	P977910	DECAL: DANGER KEEP CLEAR
3	1	M30047	LOWER FRONT SHIELD	55	3	P150400	1/4" HEX NUT
4	1	M30048	UPPER FRONT SHIELD	56	1	P136000	MANUAL TUBE
5	2	M30075	CONVEYOR HOLD DOWN	57	2	M30178	SCREEN GUIDE
6	1	M30070	REAR SHIELD	58	8	P104606	3/8" X 1-1/2" CARRIAGE BOLT
7	1	M30172	DIGGER POINT	59	8	P850106	3/8" FLAT WASHER
8	4	M30079	BUMPER SPACER	60	8	P150600	3/8" HEX NUT
9	1	M30080	HOPPER DOOR HANDLE				
10	2	M30081	LATCH PIVOT BUSHING				
11	1	M30082	HOPPER WELMENT				
12	2	P601500	EXTENSION SPRING				
13	1	P350700	HYD MOTOR CHAR-LYNN 2000, 104-1026				
14	2	P133060	RUBBER GROMMET				
15	2	P605000	BUMPER PAD				
16	2	P135100	3/8" EYE BOLT				
17	6	P851104	1/4" LOCK WASHER				
18	13	P850104	1/4" FLAT WASHER				
19	2	P850105	5/16" FLAT WASHER				
20	4	P850107	7/16" FLAT WASHER				
21	4	P158003	1/4" NYLOCK NUT				
22	6	P155300	5/16" JAM NUT				
23	9	P155350	5/16" TOP LOCK NUT				
24	8	P155400	3/8" JAM NUT				
25	5	P155450	3/8" TOP LOCK NUT				
26	4	P155850	1/2" TOP LOCK NUT				
27	6	P157200	1/2" JAM NUT				
28	2	P851108	1/2" LOCK WASHER				
29	6	P100403	1/4" X 3/4" HEX BOLT				
30	4	P110910	1/4" X 1" SOCKET HD CAP SCREW				
31	6	P100504	5/16" X 1" HEX BOLT				
32	2	P108508	5/16" X 1/2" SET SCREW				
33	2	P108512	5/16" X 3/4" SET SCREW				
34	2	P100603	3/8" X 3/4" HEX BOLT				
35	5	P100604	3/8" X 1" HEX BOLT				
36	10	P100806	1/2" X 1-1/2" HEX BOLT				
37	2	P100820	1/2" X 5" HEX BOLT				
38	1	M5000-9	5/16" X 3" SQUARE KEY				
39	1	M30139	HOOD LOCK				
40	1	P100503	5/16" X 3/4" HEX BOLT				
41	1	P100505	5/16" X 1-1/4" HEX BOLT				
42	1	M30184	1/2" SCREEN				
43	1	M30185	3/4" SCREEN				
44	3	P104403	1/4" X 3/4" CARRIAGE BOLT				
45	2	P110512	5/16" X 3" SOCKET HD CAP SCREW				
46	1	P977311	DECAL: SMALL SUN				
47	2	P977200	DECAL: HARLEY MAN BEACH CLEANER				
48	1	P977100	DECAL: CHERRINGTON BEACH CLEANER				
49	2	P977106	DECAL: 950				
50	1	P970300	DECAL: DANGER ROTATING PARTS				
51	1	P977900	DECAL: WARNING GUARDS IN PLACE				
52	3	P975107	DECAL: DANGER SHIELD MISSING				

# CONVEYOR ASSEMBLY

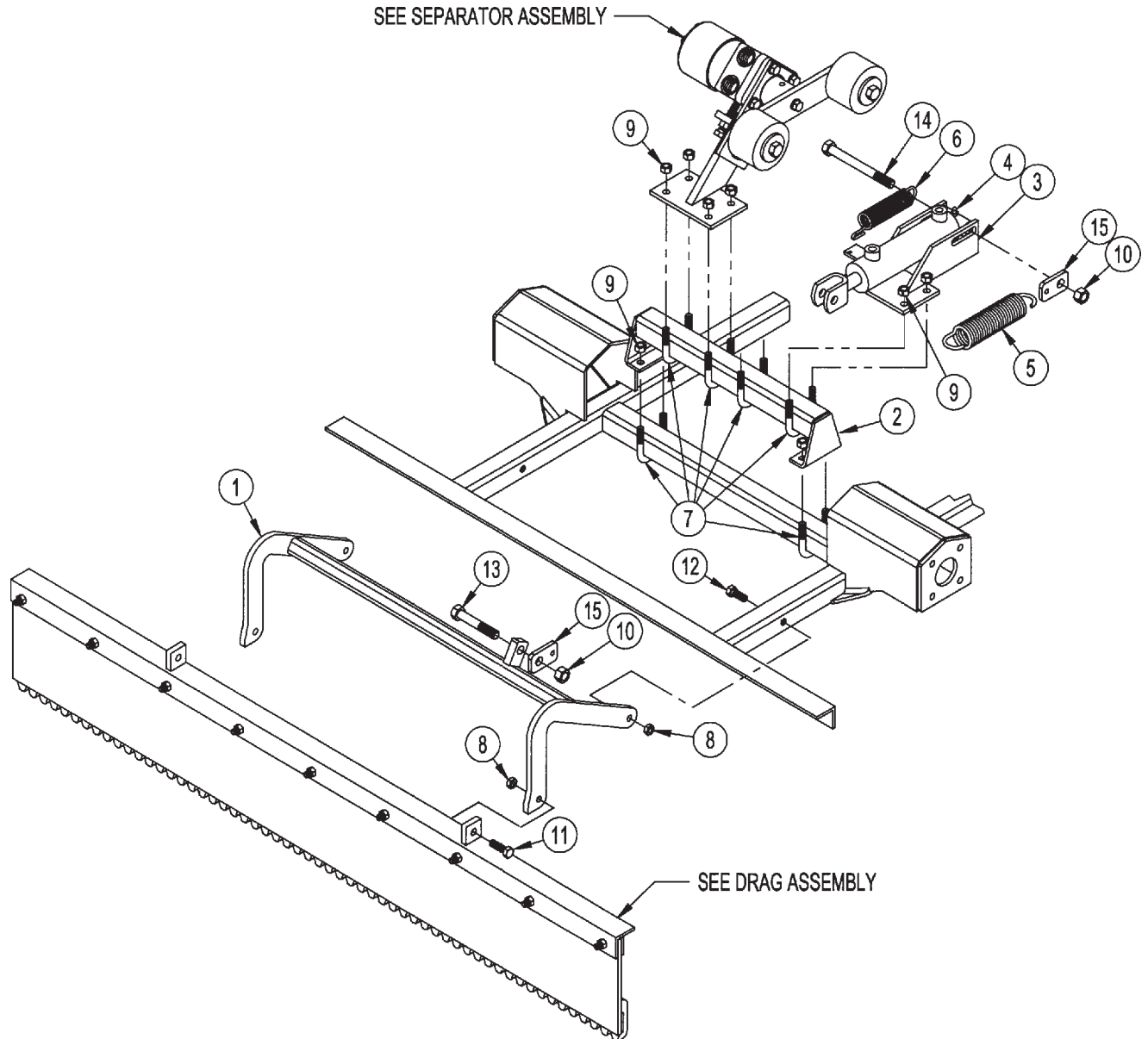


## ITEM QTY PART NO. DESCRIPTION

ITEM	QTY	PART NO.	DESCRIPTION
1	1	M30015	FRONT CONVEYOR SHAFT
2	1	M30016	REAR CONVEYOR SHAFT
3	1	M30006	CONVEYOR SUPPORT WELDMENT
4	5	M30073	1-1/4" MODIFIED FLANGE BEARING
5	1	M30007	CONVEYOR ADJUSTMENT BRACKET L
6	1	M30008	CONVEYOR ADJUSTMENT BRACKET R
7	4	M30086	WEAR STRIP *REPLACED WITH 71.000271M
8	2	M30189	CONVEYOR CHAIN WELDMENT
9	1	M30088	3.219 LG CONVEYOR SHAFT SPACER
10	1	M30089	1.125 SHT CONVEYOR SHAFT SPACER
11	9	M30092	FLIGHT BLADE RIGHT HAND
12	9	M30093	FLIGHT BLADE LEFT HAND
13	4	P852608	1/2" HARD WASHER
14	1	M5009-5	3/16" X 1/2" X 1-3/4" WASHER
15	8	P155350	5/16" TOP LOCK NUT
16	36	P155450	3/8" TOP LOCK NUT
17	12	P155850	1/2" TOP LOCK NUT
18	2	P157200	1/2" JAM NUT
19	8	P103504	5/16-18 X 1.00 FLAT HD CAP SCREW
20	36	P100604	3/8" X 1" HEX BOLT
21	1	P102805	1/2" X 1-1/4" FINE THD HEX BOLT
22	12	P100806	1/2" X 1-1/2" HEX BOLT
23	2	P098810	1/2" X 2-1/2" FULL THD HEX BOLT



# GROOMER & SEPARATOR ASSEMBLY

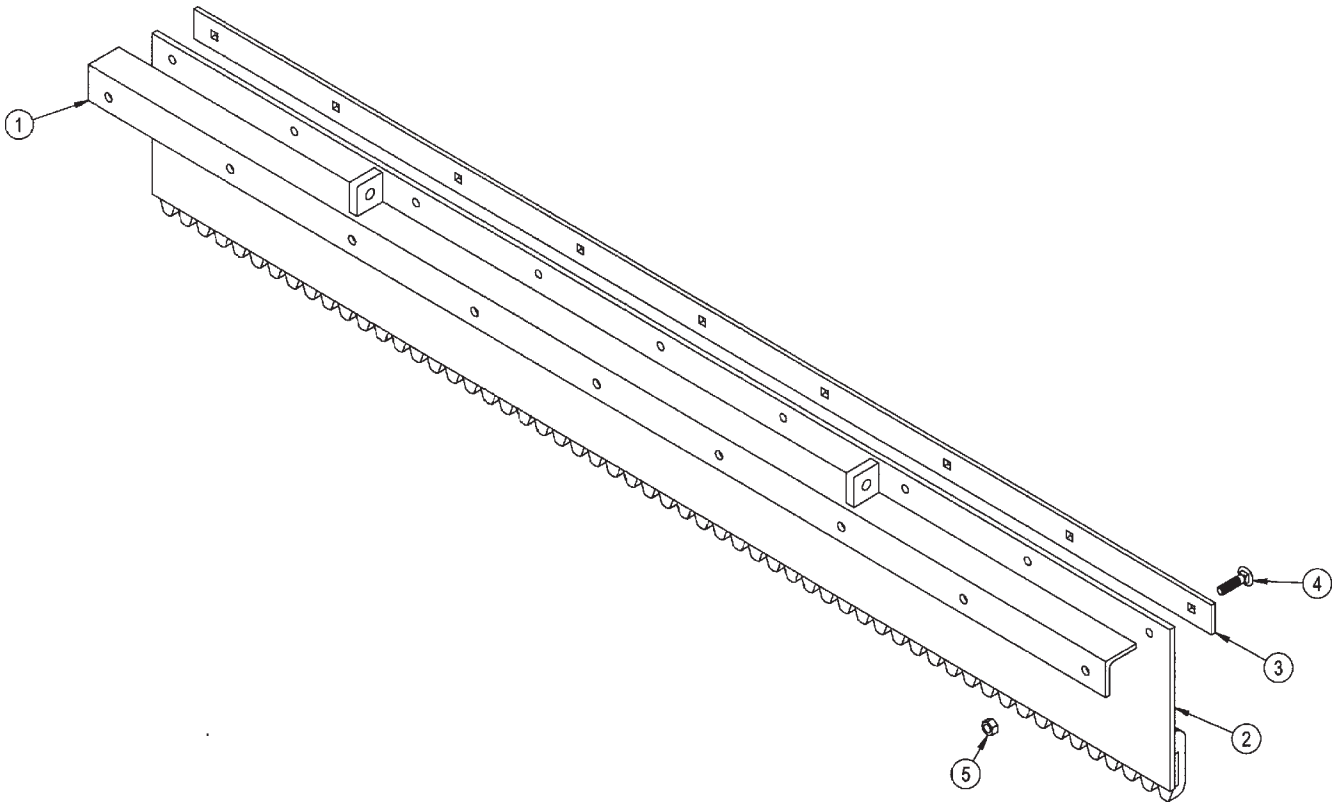


## ITEM QTY PART NO. DESCRIPTION

1	1	M30067	LIFT FRAME
2	1	M30110	CONVEYOR RISER BRACKET
3	1	M30023	REAR CYLINDER MOUNT
4	1	P256200	HYDRAULIC CYLINDER 1-1/2" X 4"
		P256201	SEAL KIT
5	1	P601500	EXTENSION SPRING
6	1	P604700	EXTENSION SPRING
7	6	P127204	U-BOLT 3/8" X 1-1/2" X 2-1/4"
8	4	P155400	3/8" JAM NUT
9	12	P155450	3/8" TOP LOCK NUT
10	2	P155850	1/2" TOP LOCK NUT
11	2	P100605	3/8" X 1-1/4" HEX BOLT
12	2	P100609	3/8" X 2-1/4" HEX BOLT
13	1	P100812	1/2" X 3" HEX BOLT
14	1	P100820	1/2" X 5" HEX BOLT
15	2	M30147	SPRING HOLDER

# GROOMER BAR ASSEMBLY

---

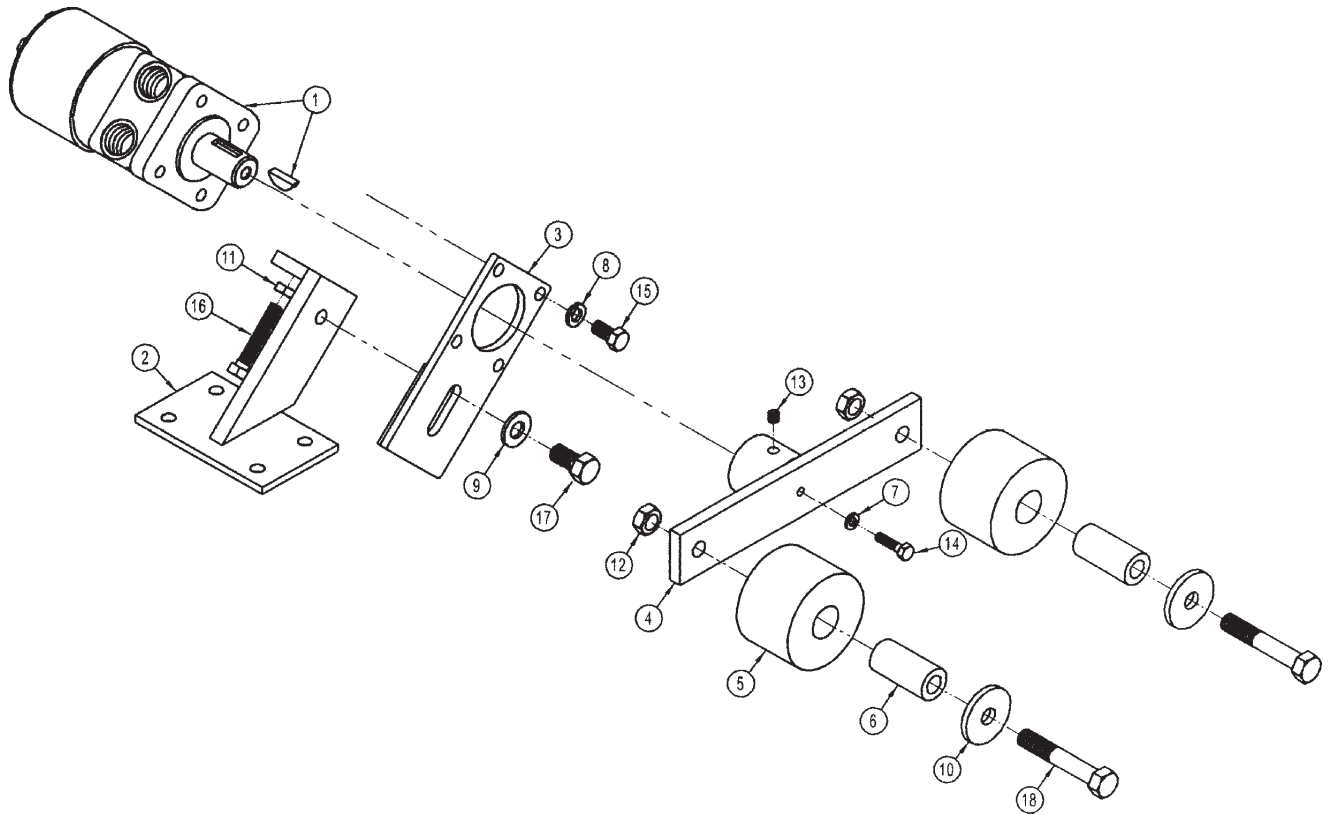


## ITEM QTY PART NO. DESCRIPTION

1	1	M30181	DRAG COMB MOUNT
2	1	M30183	SNOW COMB
3	1	M30180	DRAG COMB STRAP
4	9	P104505	5/16" X 1-1/4" CARRIAGE BOLT
5	9	P155350	5/16" TOP LOCK NUT



# SEPARATOR ASSEMBLY

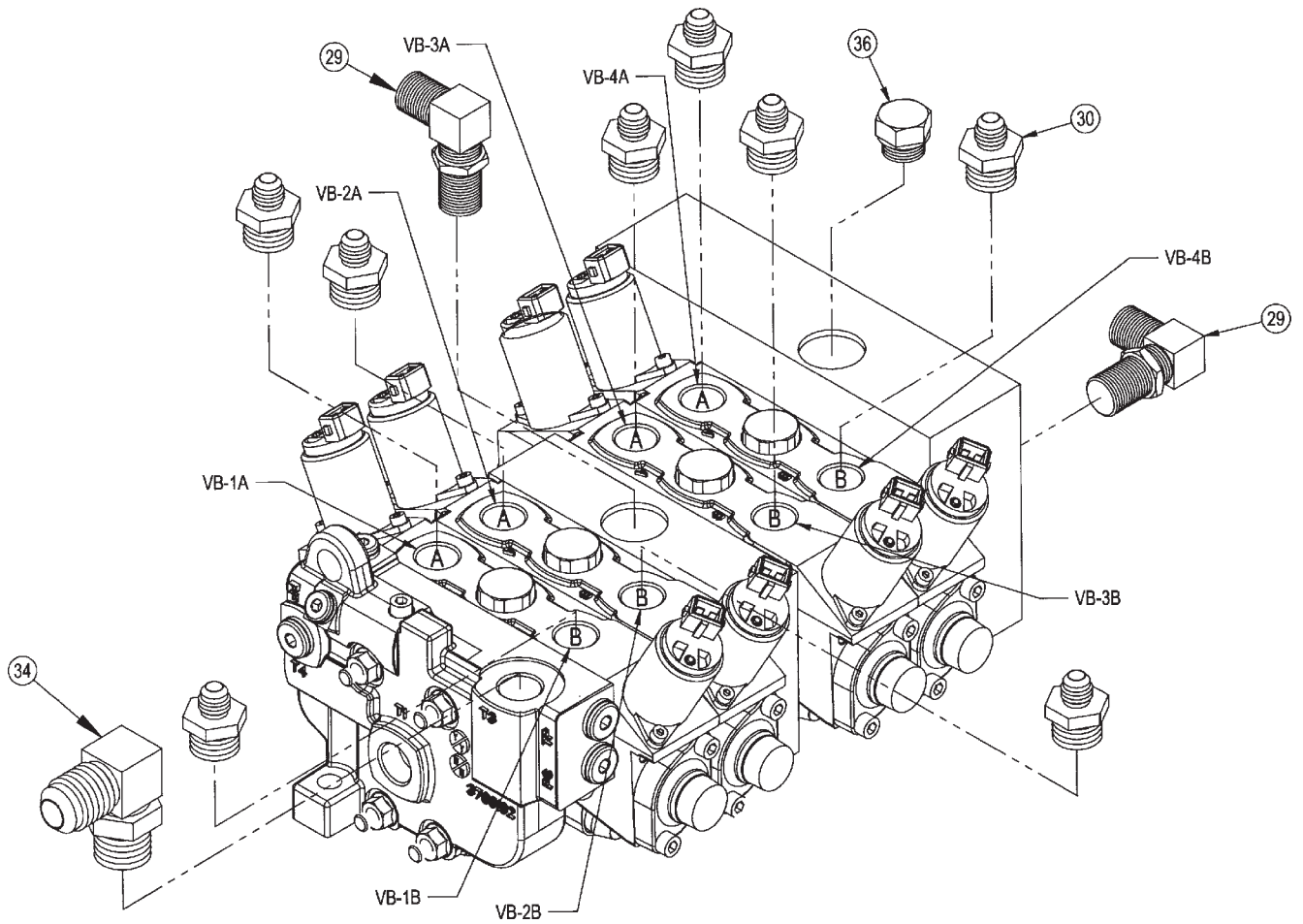


## ITEM QTY PART NO. DESCRIPTION

1	1	P350600	DAN FOSS HYD MOTOR DH160 151-2045
		P350601	SEAL KIT
2	1	M30018	SEPARATOR MOUNT
3	1	M30019	SEPARATOR MOTOR MOUNT
4	1	M30019	SEPARATOR ARM
5	2	M30083	SEPARATOR ROLLER
6	2	M30084	SEPARATOR SLEEVE
7	1	P851104	1/4" LOCK WASHER
8	4	P851106	3/8" LOCK WASHER
9	1	P852608	1/2" HARD WASHER
10	2	M5009-5	3/16" X 1-1/2" X 1-3/4" WASHER
11	1	P155400	3/8" JAM NUT
12	2	P157200	1/2" JAM NUT
13	1	P108505	5/16" X 5/16" SET SCREW
14	1	P100404	1/4" X 1" HEX BOLT
15	4	P100603	3/8" X 3/4" HEX BOLT
16	1	P098608	3/8" X 2" FULL THD HEX BOLT
17	1	P100804	1/2" X 1" HEX BOLT
18	2	P100812	1/2" X 3" HEX BOLT



# HYDRAULIC ASSEMBLY

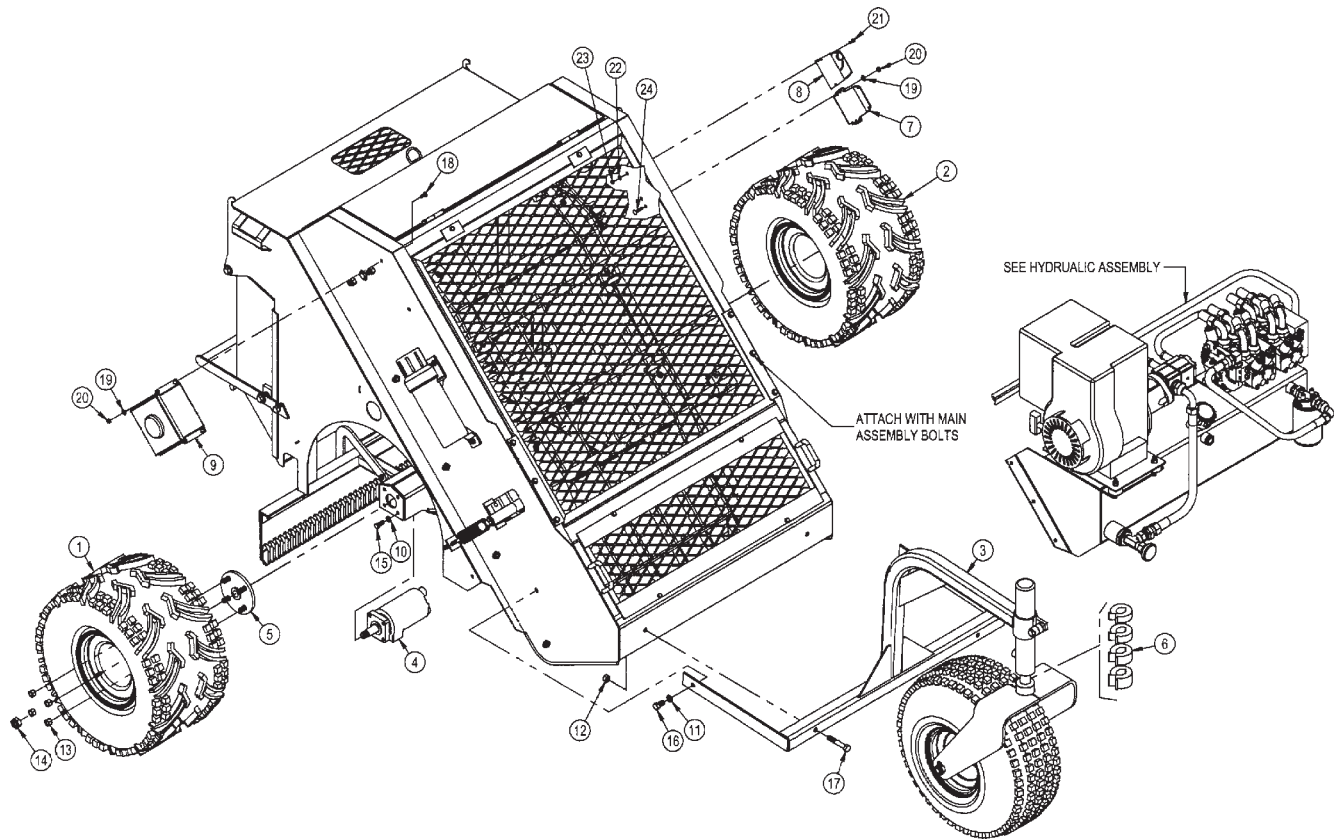


# HYDRAULIC ASSEMBLY

## ITEM QTY PART NO. DESCRIPTION

1	1	P370900	11 HP HONDA MOTOR
2	1	M30136	950 HYDRAULIC RESEVIOR
3	1	M30125	ENGINE MOUNT PLATE
4	1	P375005	PARKER MANIFOLD
5	1	P359100	GEAR PUMP
6	1	P361100	PUMP MOUNT BF-4-C-5.63
7	1	P360100	5/8" DRIVE COUPLING
8	1	P360115	1" DRIVE COUPLING
9	1	P360110	COUPLING INSERT
10	1	P610100	FILLER CAP
11*	1	P610200	FLOW EZY FILTER COMPLETE HOUSING <b>REPLACEMENT FILTER ONLY P/N: 71.P371850</b>
12	1	P610500	TANK STRAINER
13	1	P297300	TEMP GAUGE
14	1	P610400	LEVEL SIGHT PLUG
15	4	P133030	RUBBER MOUNT
16	1	P246251	1/4" HOSE 4FJX-6FJX (50")
17	1	P244160	1/4" HOSE 4FJX-6FJX (16")
18	1	P248042	3/8" HOSE 6FJX-6FJX (42")
19	1	P248041	3/8" HOSE 6FJX-6FJX90° (41")
20	2	P248070	3/8" HOSE 6FJX-6FJX90° (70")
21	1	P248066	3/8" HOSE 6FJX-6FJX90° (66")
22	2	P248088	3/8" HOSE 6FJX-6FJX90° (88")
23	1	P255994	-12 HOSE 12FJX-12FJX90° (24")
24	1	P251024	-8 HOSE 8MB-8FJX (24")
25	1	P255971	3/4" SUCTION HOSE 12FJX-12FJX90° (21")
26	1	P251636	1/2" HOSE 8MB-8FJX (39")
27	2	P246241	1/4" HSOE 6FJX-6FJX90° (41")
28	2	P276101	ADAPTER 6MB-6MJ
29	2	P261010	ADAPTER 8MB-8MJ90°
30	12	P276215	ADAPTER 10MB-6MJ
31	1	P276450	ADAPTER 12MB-12MJ
32	2	9276451	ADAPTER 12MP-12MP
33	1	P271500	3/4" HEX NIPPLE 12MP-12MP
34	1	P276470	ELBOW 10MB-12MJ90°
35	2	P261410	ELBOW 4MP-4MJ90°
36	1	P278005	PLUG 8MB
37	4	P261530	ELBOW 8MB-6MJ90°
38	2	P265550	TEE 6FJX-6MJ-6MJ
39	1	P267440	TEE 12FP-12MP-12FP
40	1	P267380	REDUCER BUSHING 16MP-12FP
41	1	M30142	MODIFIED REDUCER BUSHING 20MP-12FP
42	1	P267350	REDUCER BUSHING 12MP-8FP
43	4	P851105	5/16" LOCK WASHER
44	14	P851106	3/8" LOCK WASHER
45	4	P851606	3/8" HEAVY WASHER
46	8	P150600	3/8" HEX NUT
47	4	P155450	3/8" TOP LOCK NUT
48	4	P100503	5/16" X 3/4" HEX BOLT
49	8	P100605	3/8" X 1-1/4" HEX BOLT
50	4	P100607	3/8" X 1-3/4" HEX BOLT
51	1	R99000105	CORDURA SLEEVING 30" LONG

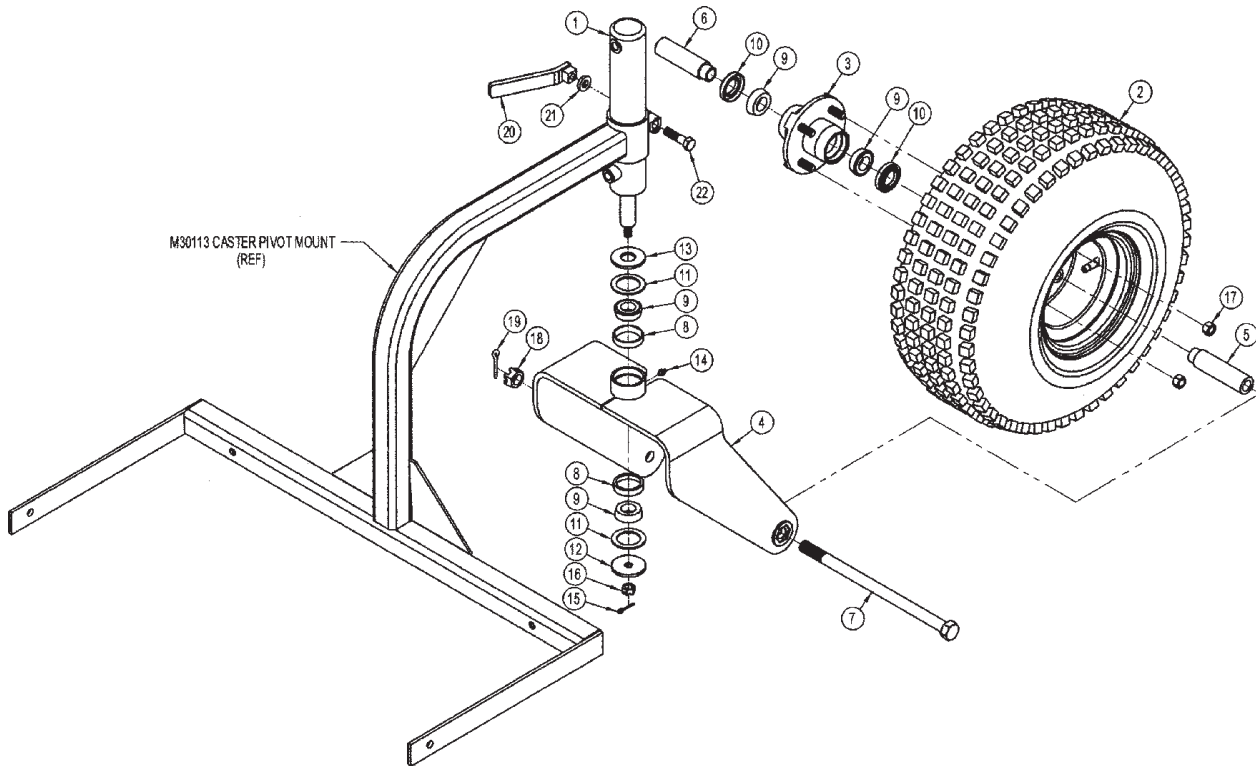
# DRIVE ASSEMBLY



## ITEM QTY PART NO. DESCRIPTION

ITEM	QTY	PART NO.	DESCRIPTION
1	1	M30140	WHEELAND TIRE ASSEMBLY RIGHT
2	1	M30141	WHEELAND TIRE ASSEMBLY LEFT
3	1	M30113	CASTER PIVOT MOUNT
4	2	P350800	PARKER MOTOR (TE0295FR250AAA)
5	2	P758000	4 BOLT HUB
6	1	P781000	STROKE CONTROL SET (7/8", 1", 1-1/4", 1-1/2")
7	1	P296802	REMOTE CONTROL RECEIVER
8	1	P296800	TOC2 CONTROLLER
9	1	P296803	E-STOP JUNCTION BOX
10	8	P851106	3/8" LOCK WASHER
11	2	P851108	1/2" LOCK EASHER
12	2	P155850	1/2" TOP LOCK NUT
13	8	P756165	1/2-20 WHEEL NUT
14	2	P157120	3/4" TOP LOCK NUT
15	8	P100604	3/8" X 1" HEX BOLT
16	2	P100804	1/2" X 1" HEX BOLT
17	2	P100812	1/2" X 3" HEX BOLT
18	4	P104403	1/4" X 3/4 CARRIAGE BOLT
19	6	P850104	1/4 " FLAT WASHER
20	6	P158003	1/4" NYLOCK NUT
21	2	P111109	#10-24 HEX HEAD MACHINE SCREW
22	2	P852160	#10 FLAT WASHER
23	2	P158100	#10-24 HEX NUT
24	2	P104405	1/4" X 1-1/4" CARRIAGE BOLT
24	1	P296801	WIRING HARNESS (NOT SHOWN)

# FRONT CASTER WHEEL ASSEMBLY



## ITEM QTY PART NO. DESCRIPTION

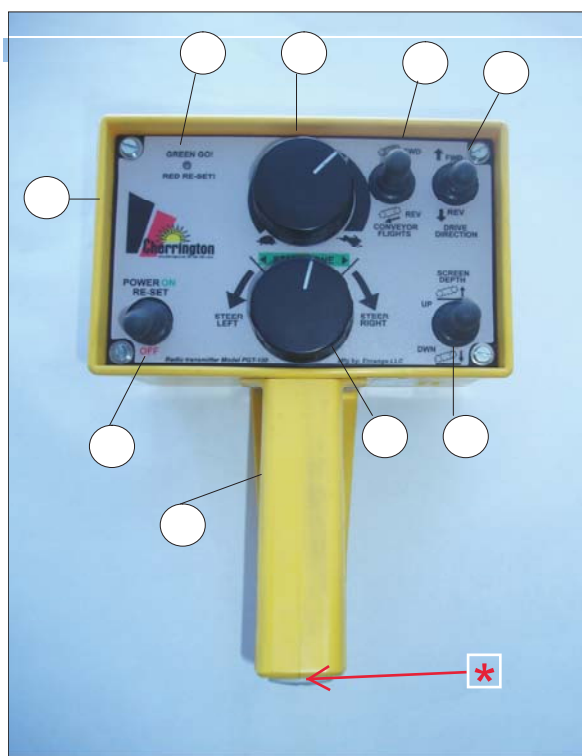
ITEM	QTY	PART NO.	DESCRIPTION
1	1	P257610	HYDRAULIC CYLINDER
2 *	1	P770500	WHEEL AND TIRE *REPLACE WITH UPDATED P/N: 71.005360
3	1	P756161	WHEEL HUB WITH STUDS
4	1	M30121	950 CASTER WELDMENT
5	1	M30114	AXLE SPACER LONG
6	1	M30119	AXLE SPACER SHORT
7	1	M30120	AXLE BOLT 13-1/2"
8	2	P762100	1" BEARING CUP
9	4	P762200	1" BEARING CONE
10	2	P756163	GREASE SEAL
11	2	P852300	FELT WASHER
12	1	M5462	2-1/4" OD X 17/32" ID WASHER
13	1	M5464	2-1/4" OD X 1" ID WASHER
14	1	P620200	1/4-28 STR GREASE FITTING
15	1	P116204	1/8" X 1" COTTER PIN
16	1	P158006	1/2" SLOTTED HEX NUT
17	4	P756165	1/2-20 WHEEL NUT
18	1	P158000	3/4 SLOTTED HEX NUT
19	1	P116256	5/32" X 1-1/2" COTTER PIN
20	1	M6415	CASTER WHEEL
21	1	P852608	1/2" HARD WASHER
22	1	P102808	1/2" X 2" FINE THREAD HEX BOLT

ENRANGE REMOTE CONTROL: USED ON EARLY CBC MDL 950

ENRANGE HANDHELD REMOTE AND RECEIVER ARE OBSOLETE REPAIR PARTS AND SERVICES ARE UNSUPPORTED.

IF CONTROL SYSTEM HAS FAILED: REQUIRES COMPLETE SYSTEM UPDATE. UPDATE WITH COMPLETE CERVIS CONTROL PACKAGE P/N 71.P296842

ENRANGE (YELLOW) HANDHELD REMOTE



\* ONLY REPLACEMENT ITEMS AVAILABLE

71.P002020 BATTERY CAP ONLY

71.P280952 BATTERY CAP AND BATTERY TUBE ASSY.

CERVIS (BLACK) HANDHELD REMOTE



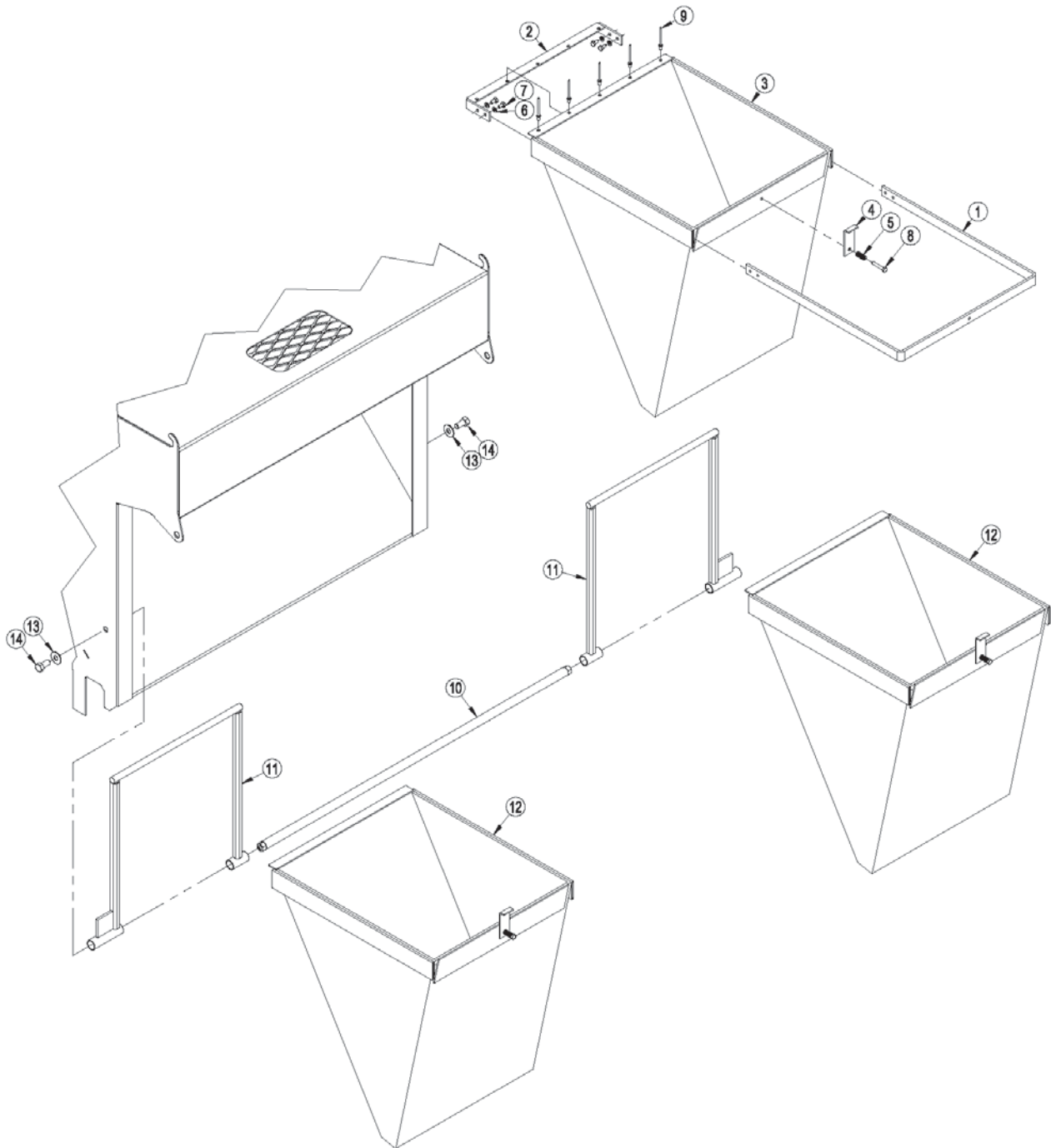
CERVIS (BLACK) HANDHELD REMOTE  
CURRENT REMOTE USED ON CBC 950





# OPTIONAL COLLECTION BAG ASSEMBLY

A collection bag assembly is available as an add-on option to your Model 950.



# OPTIONAL COLLECTION BAG ASSEMBLY

<u>Item</u>	<u>Qty</u>	<u>Part ID</u>	<u>Description</u>
1	1	M30157	BAGGER TOP HOLDER
2	1	M30158	TOP HOLDER BRACKET
3	1	M30159	COLLECTION BAG
4	1	M30161	BAG LATCH
5	1	P601050	SPRING: COMPRESSION, .48 OD X 1"
6	4	P851104	WASHER: LOCK, 1/4"
7	4	P100402	BOLT: HEX, 1/4" X 1/2"
8	1	P100406	BOLT: HEX, 1/4" X 1 1/2"
9	5	P126272	POP RIVET: LARGE FLANGE, 1/8" X 3/8"
10	1	M30156	BAGGER CROSS BAR
11	2	M30155	BAGGER MOUNT
12	2	M30162	COLLECTION BAG ASSEMBLY
13	2	P850107	WASHER: FLAT, 7/16"
14	2	P100804	BOLT: HEX, 1/2" X 1"